



Gateway MS2285 RAM Replacement

Replace your RAM to add additional memory or troubleshoot a faulty module.

Written By: Chris mello



INTRODUCTION

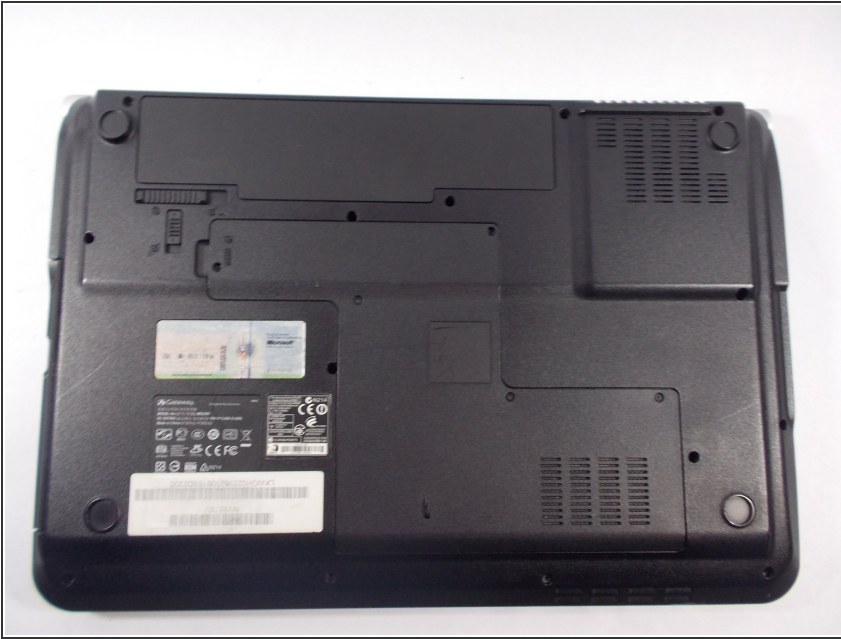
This guide will teach you how to remove your RAM modules. Upgrading RAM is a common practice among users. One thing to note is that if you want to only remove the lower RAM module, you have to remove the top one first.



TOOLS:

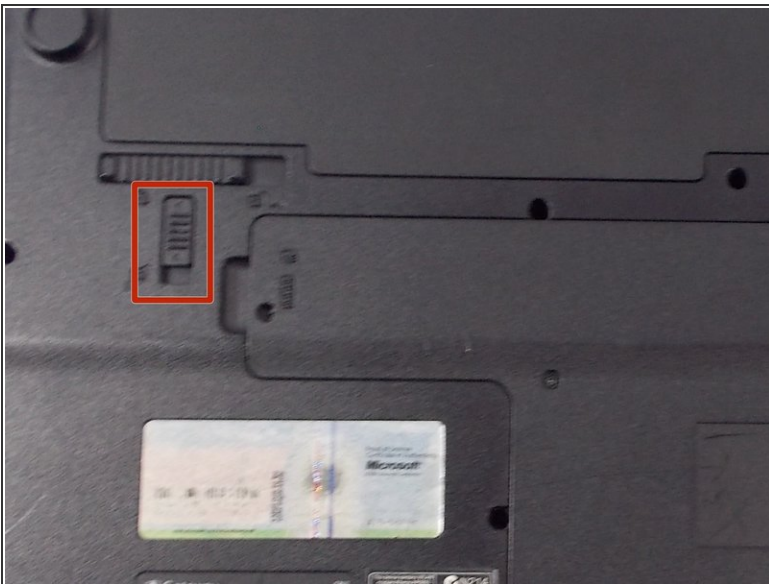
- [Phillips #00 Screwdriver](#) (1)
-

Step 1 — Turn Laptop Over



- Turn the laptop over so that the underside is facing towards you.

Step 2 — Unlock The Battery



- Slide the short slider one towards the unlocked lock symbol.

Step 3 — Release The Battery



- Slide the long slider towards the unlocked lock icon.
- This slider is spring loaded and may require a little force.
- If done correctly, a click will be heard and the battery will be slightly raised.

Step 4 — Remove The Battery



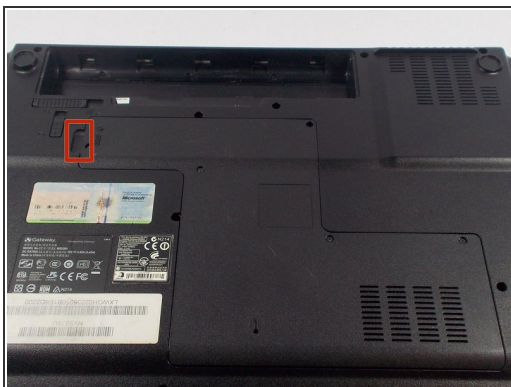
- Grasp the battery's raised end and lift upwards.

Step 5 — Unscrew Backplate



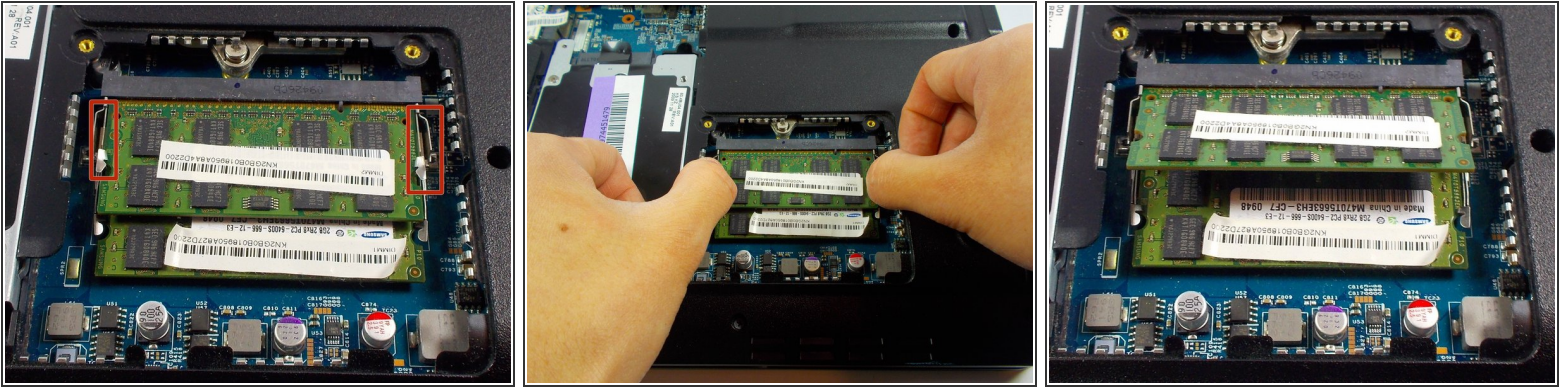
- Use the Phillips head screwdriver to remove the five screws holding the back plate.
- ⓘ The screws are counter-clockwise threaded.

Step 6 — Remove Back Plate



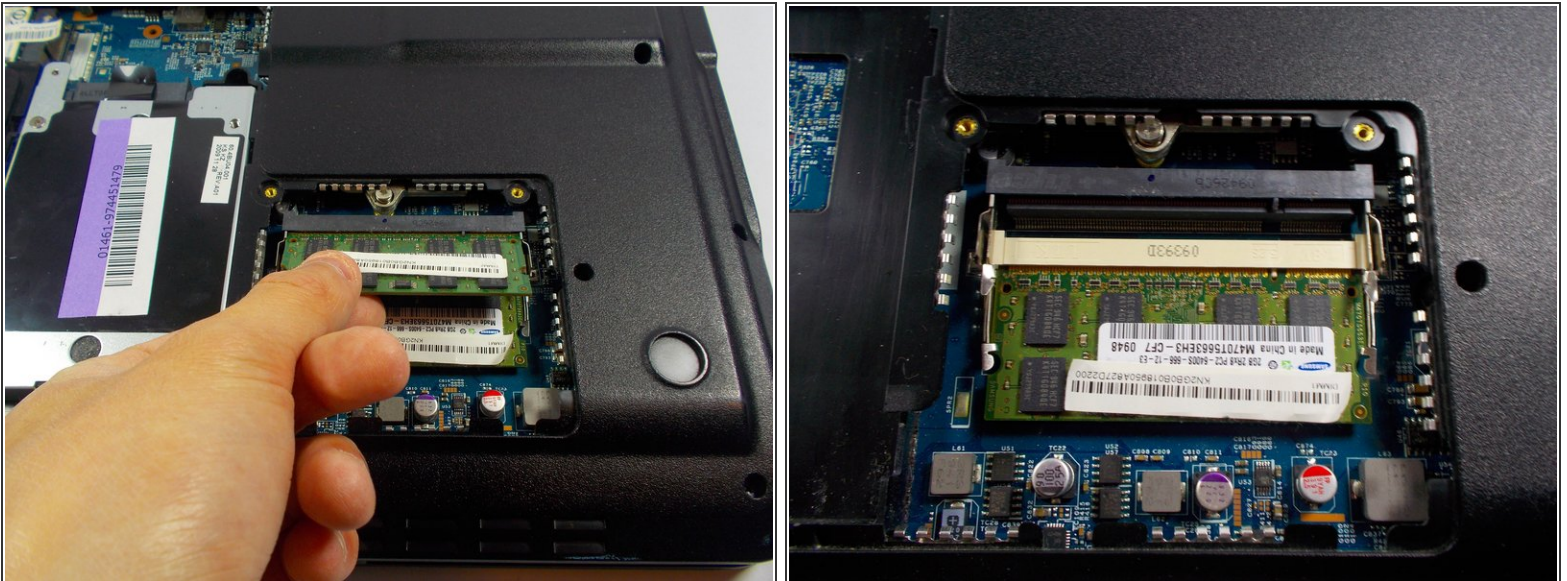
- Place fingers under back plate via the indentation and lift upwards to remove.

Step 7 — Unlock Upper RAM Module



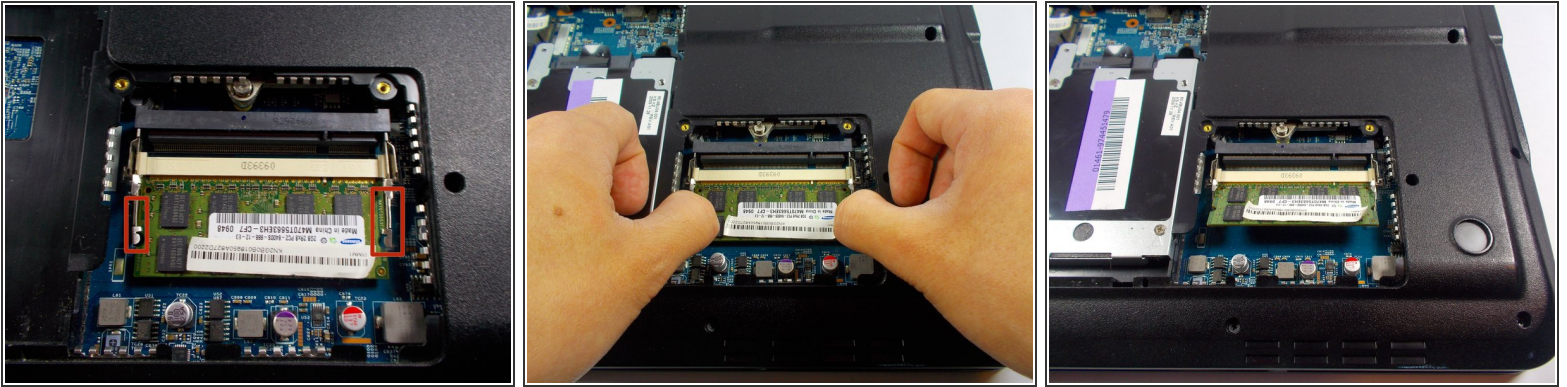
- Push the upper RAM module's two pins outwards at the same time.
- If done correctly, the module should have lifted.

Step 8 — Remove Upper RAM Module



- Grab onto the module and pull away in a straight direction.
- ⚠ Do not touch the gold connectors.

Step 9 — Unlock Lower RAM Module



- Push the lower RAM module's two pins outwards at the same time.
- If done correctly, the module should have lifted.

Step 10 — Remove Lower RAM Module



- Like removing the upper module, grab the module and pull away in a straight direction.
- ⚠ Do not touch the gold connectors.

To reassemble your device, follow these instructions in reverse order.