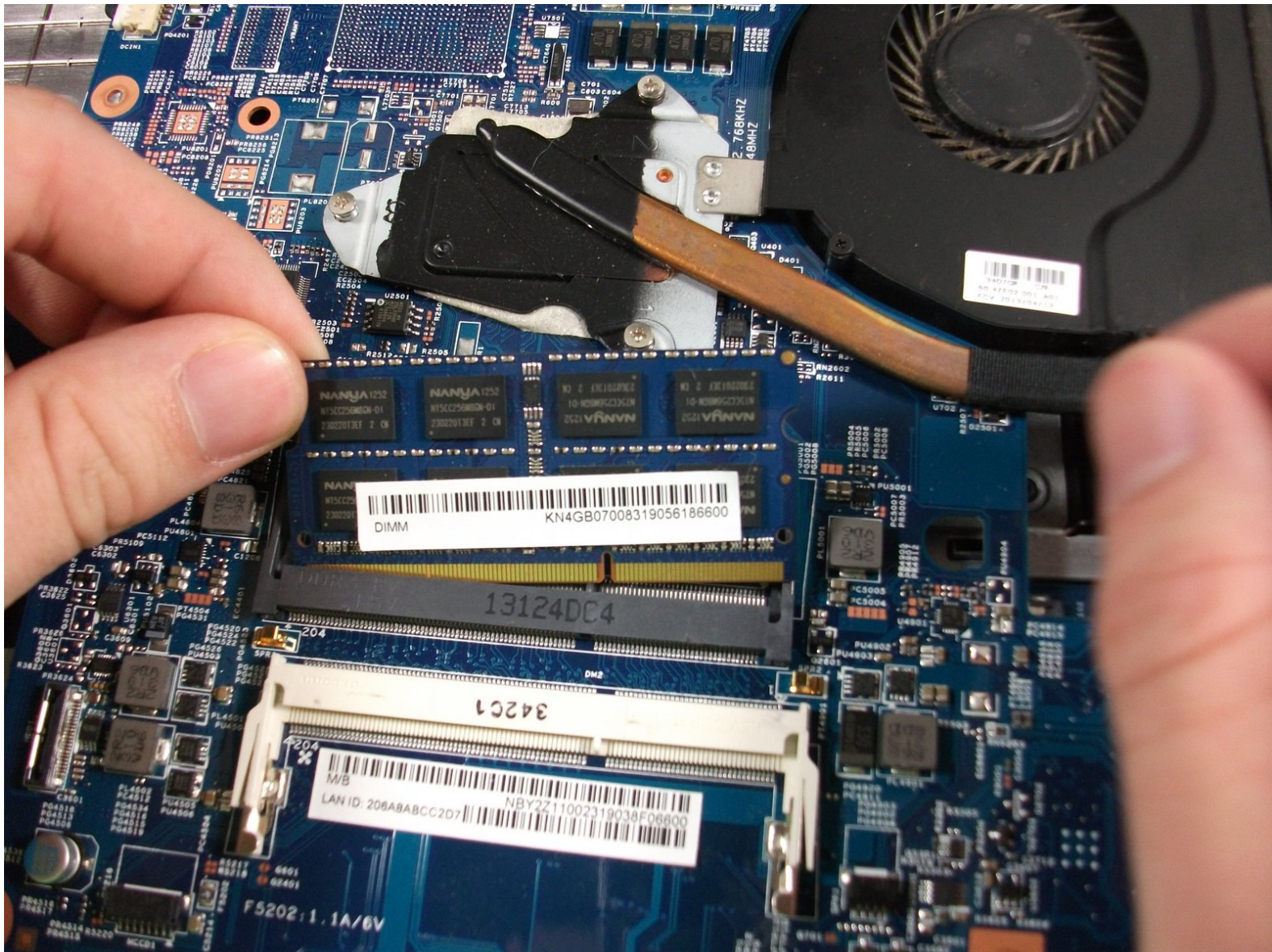




Gateway MS2370 RAM Replacement

Instructions on how to remove the RAM from the Gateway MS2370 Laptop.

Written By: Mathieu Bolduc-Clayton



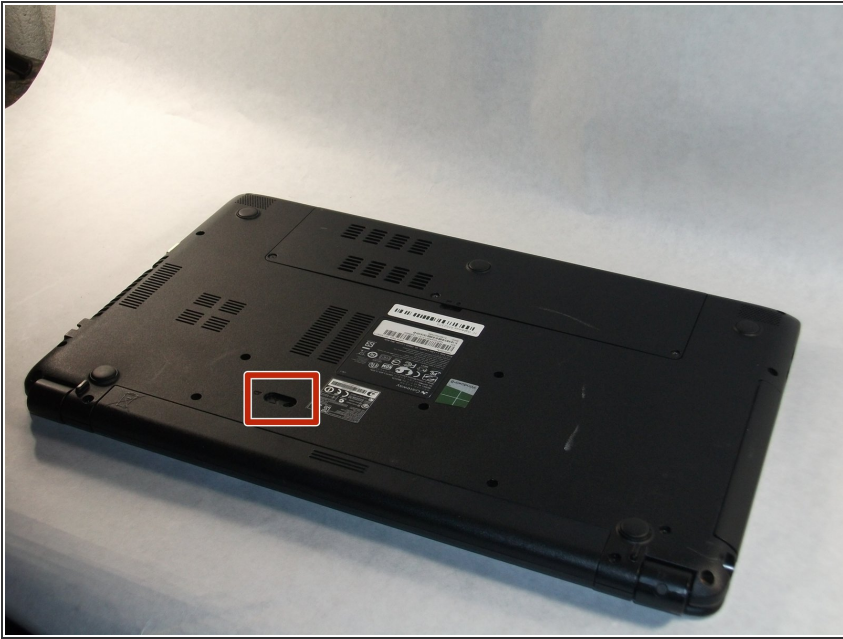
INTRODUCTION

This guide shows the user how to properly remove the RAM from the Gateway MS2370 Laptop.

TOOLS:

- [Spudger](#) (1)
 - [64 Bit Driver Kit](#) (1)
-

Step 1 — Battery



- Make sure the laptop is turned off and flipped over so that the bottom is facing up. Then, locate the battery clip as shown.

Step 2



- Either using your fingers or a plastic spudger push the battery clip to the left to release battery.

Step 3



- Pull the battery from the laptop to remove it.

Step 4 — RAM



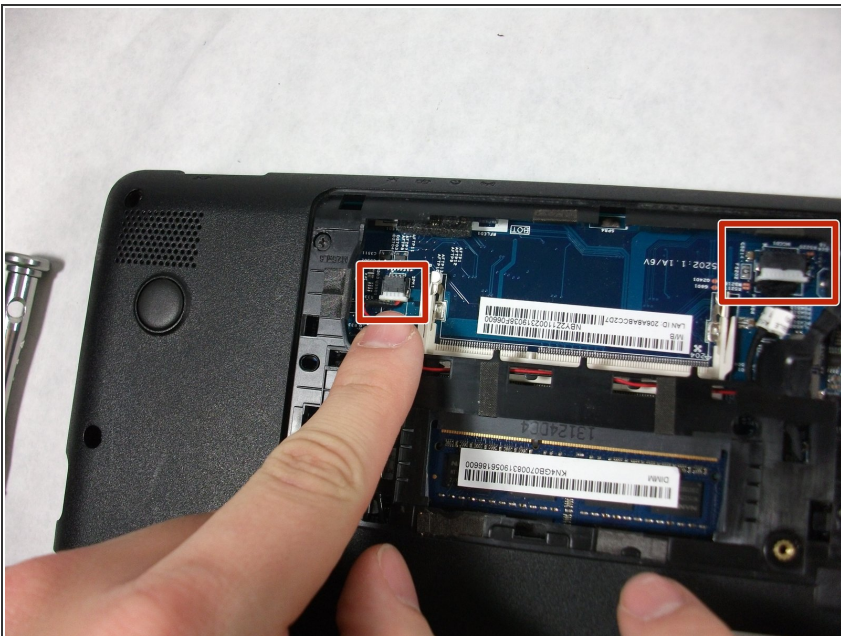
- Unscrew the three 10mm inch Phillips 01 screws on the back of your laptop.
- ⚠️ Unplug everything from the USB and SD ports.

Step 5



- Remove the cover panel.
- ⓘ This exposes more screws that must be removed.

Step 6



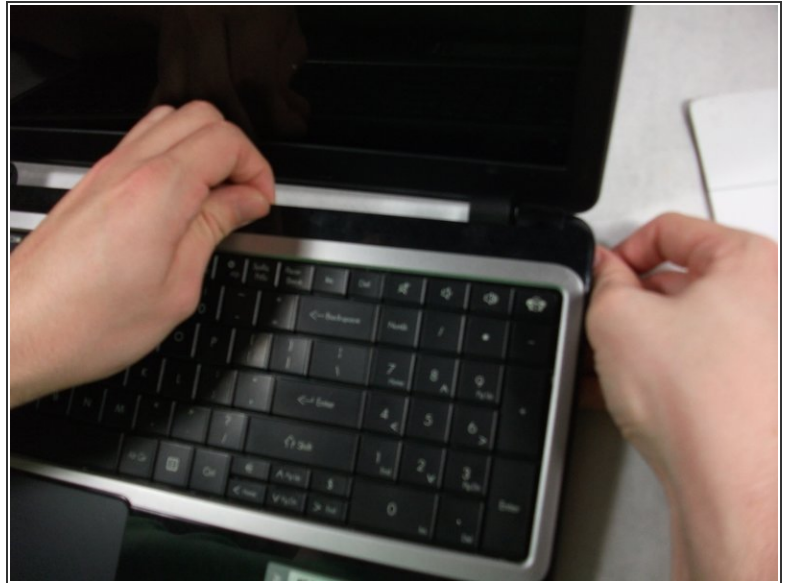
- Unplug the two exposed cables from the motherboard.

Step 7



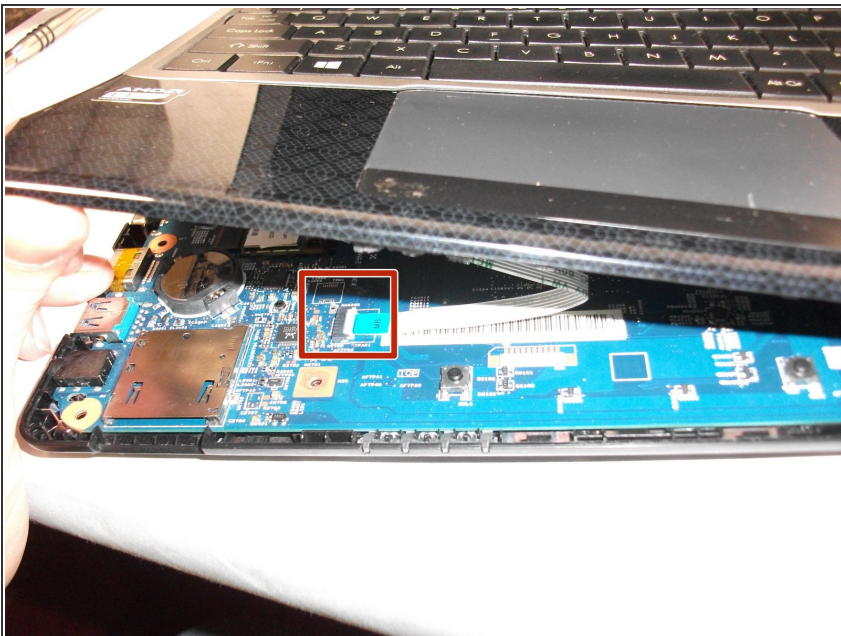
- Unscrew the rest of the case screws which include several 10mm 01 Phillips screws and three 3mm 00 Phillips screws.
- This marked screw will not fully come out. Just loosen it and leave it there it will not effect the rest of the replacement.

Step 8



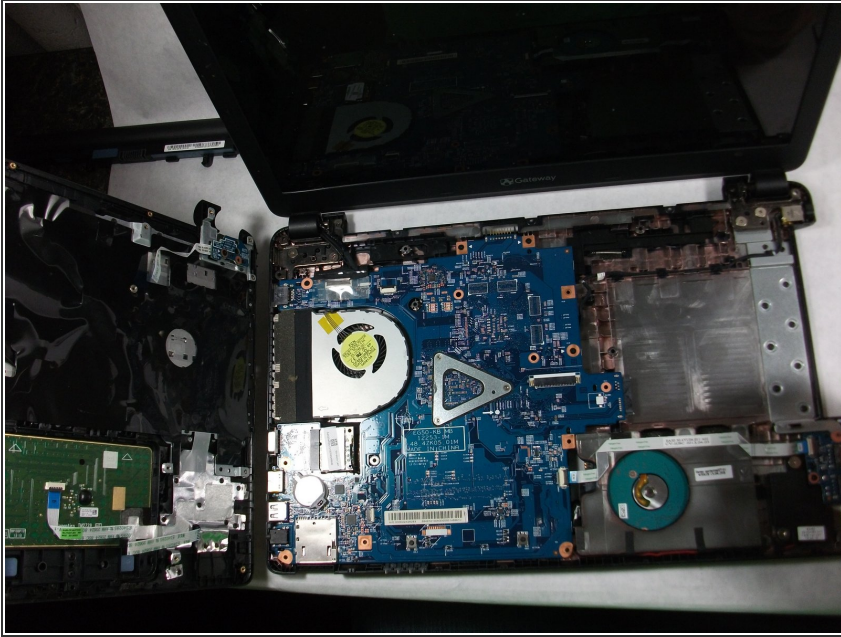
- Pry the laptop case apart.
- ⓘ The disc drive in this photo was removed. You can remove it just by pulling it out when the previous step is completed.

Step 9



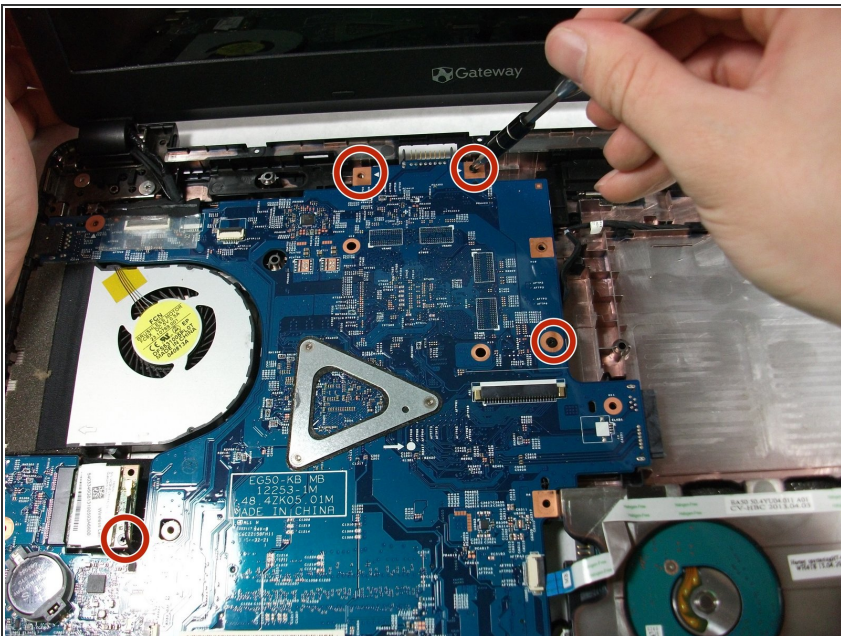
- Unplug the track-pad and the keyboard ribbon cable by lifting up the grey flap and removing the cable.
- ⚠ This cable has a special connector that requires you to lift open a grey flap to unplug properly.
- ⓘ The keyboard plug is located at the center of the motherboard and can be unplugged like a normal cable.

Step 10



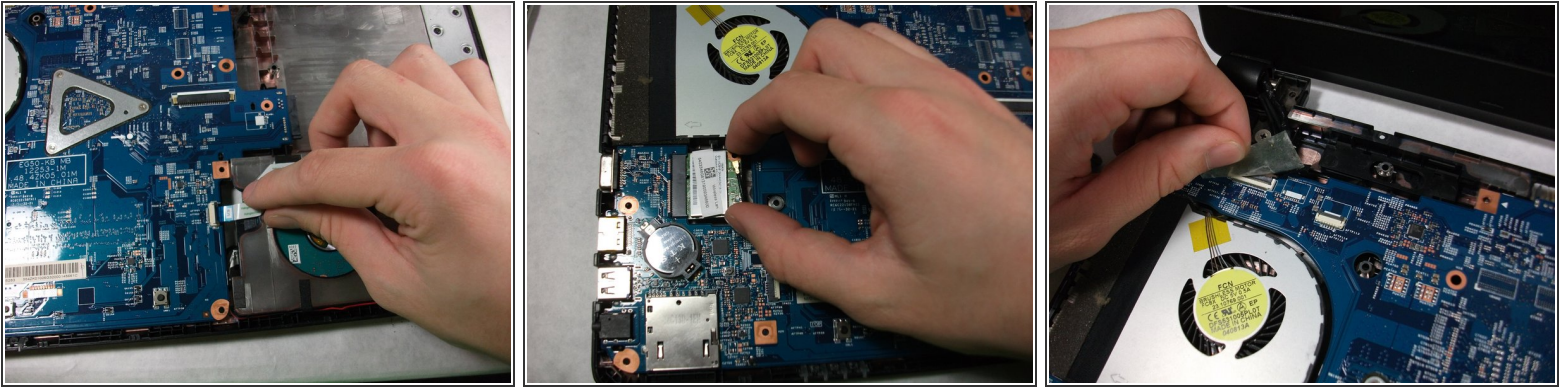
- Remove the top half of the case.

Step 11



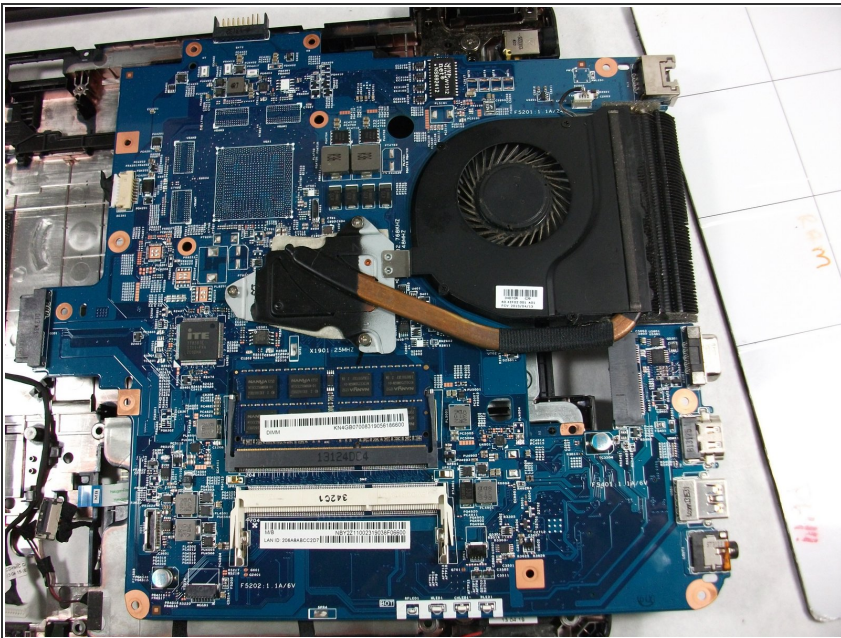
- Unscrew all 5 10mm inch Phillips 01 screws.
- ⓘ One more off screen

Step 12



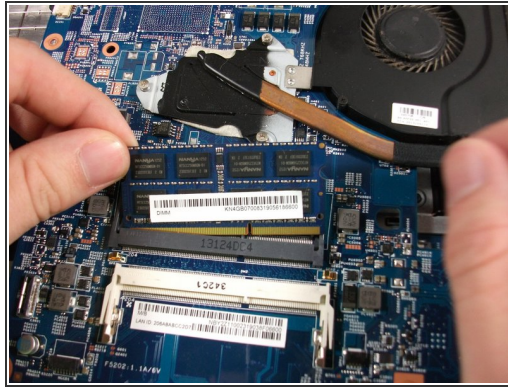
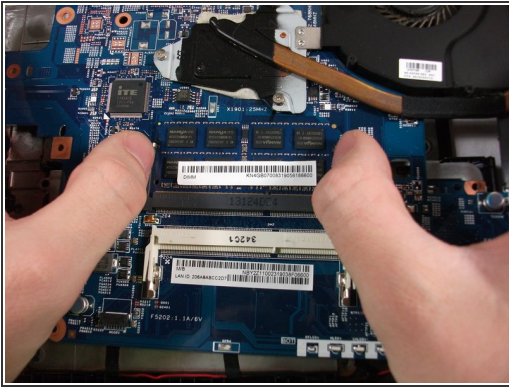
- Unplug the ribbon cable connected to the USB Hub, the network card, and the monitor cable.

Step 13



- Flip the motherboard over.

Step 14



- Using your two thumbs to pull outwards from the inside of the RAM slot to release and remove the RAM.
- ⓘ The last step of this replacement guide is not required to complete the fan replacement guide.

To reassemble your device, follow these instructions in reverse order.