



Gateway MS2370 Screen Replacement

Instructions to remove the screen from the Gateway MS2370 laptop.

Written By: Mathieu Bolduc-Clayton



INTRODUCTION

This guide shows the user how to properly remove the screen from the Gateway MS2370 Laptop.



TOOLS:

- [Spudger](#) (1)
 - [64 Bit Driver Kit](#) (1)
-

Step 1 — Battery



- Make sure the laptop is turned off and flipped over so that the bottom is facing up. Then, locate the battery clip as shown.

Step 2



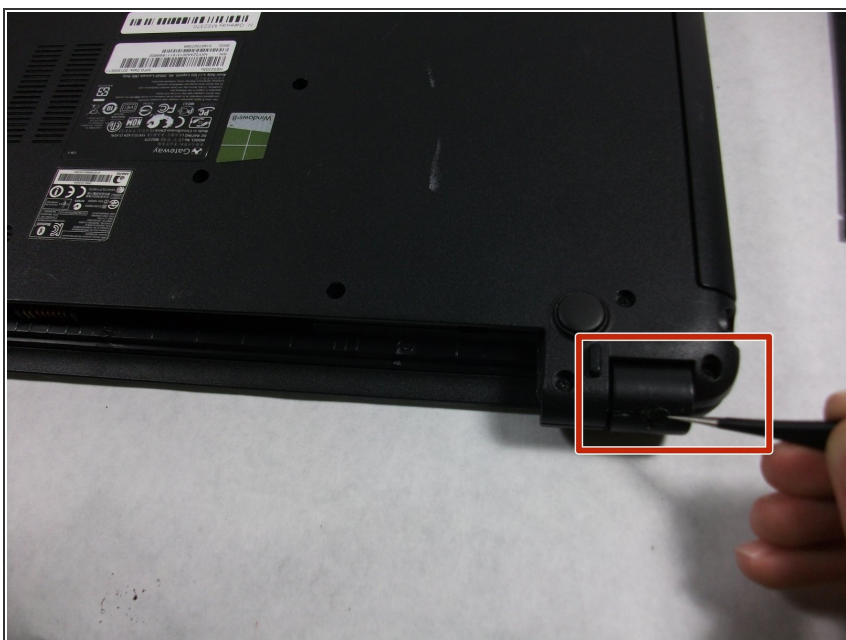
- Either using your fingers or a plastic spudger push the battery clip to the left to release battery.

Step 3



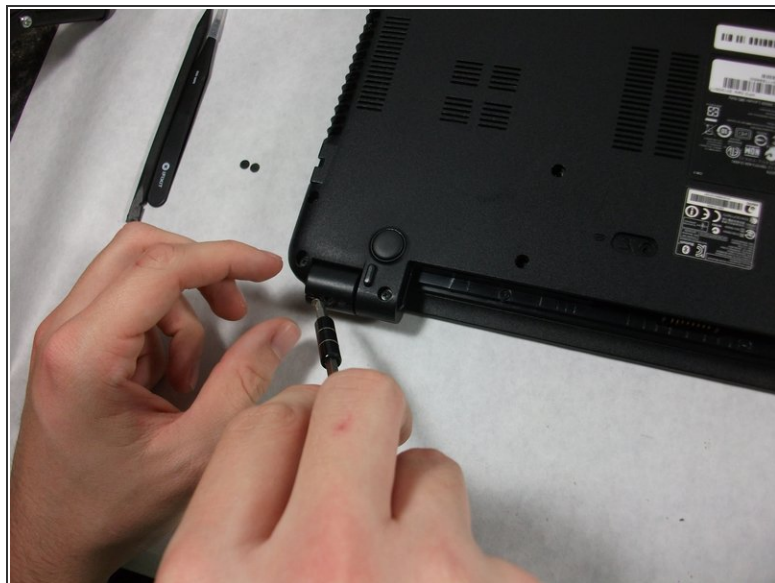
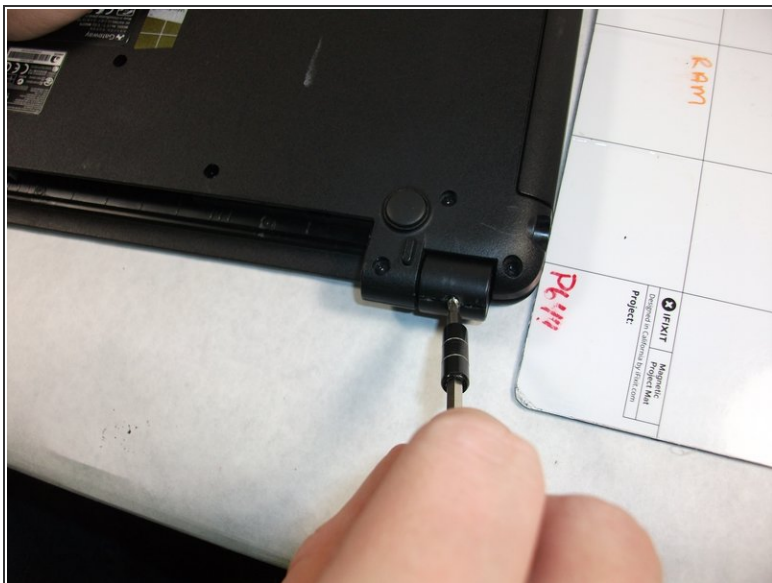
- Pull the battery from the laptop to remove it.

Step 4 — Screen



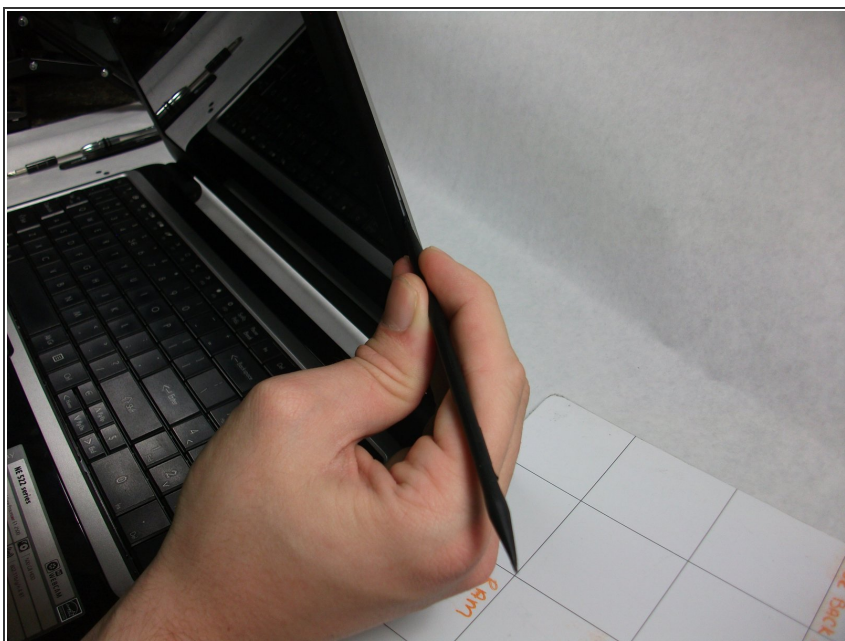
- Using the pointed tweezers, remove plastic circles that are stuck onto the back of the laptop's hinges.
- ⓘ These plastic circles are stuck inside the hole with adhesive and might require a significant amount of force.

Step 5



- Unscrew both of the 3mm Phillips 01 screws on both hinges using the matching screwdriver.

Step 6



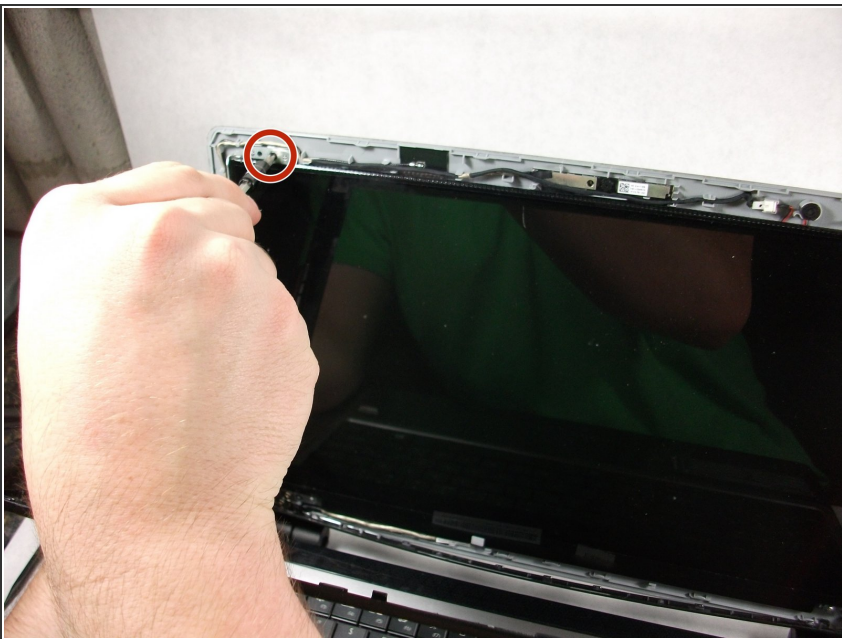
- Take the plastic spudger and pull up the tabs on all four sides of the screen molding.

Step 7



- Carefully remove the screen molding. Be aware that the screen molding will not come out all the way.

Step 8



- Unscrew the four 3mm inch Phillips 01 screws on the screen bracket.

Step 9



- Peel up the tape over the connector and unplug the screen from the laptop.

Step 10



- Slowly remove the screen from the laptop.

To reassemble your device, follow these instructions in reverse order.