



# Gateway NE51006u RAM Replacement

Step by step guide to replace Gateway NE51006u RAM.

Written By: Omer Tunagur

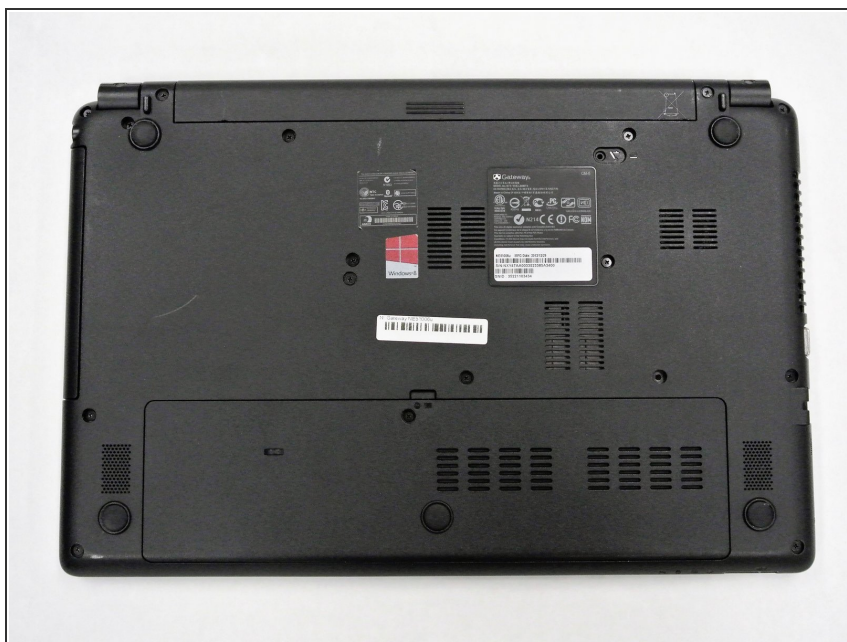




## TOOLS:

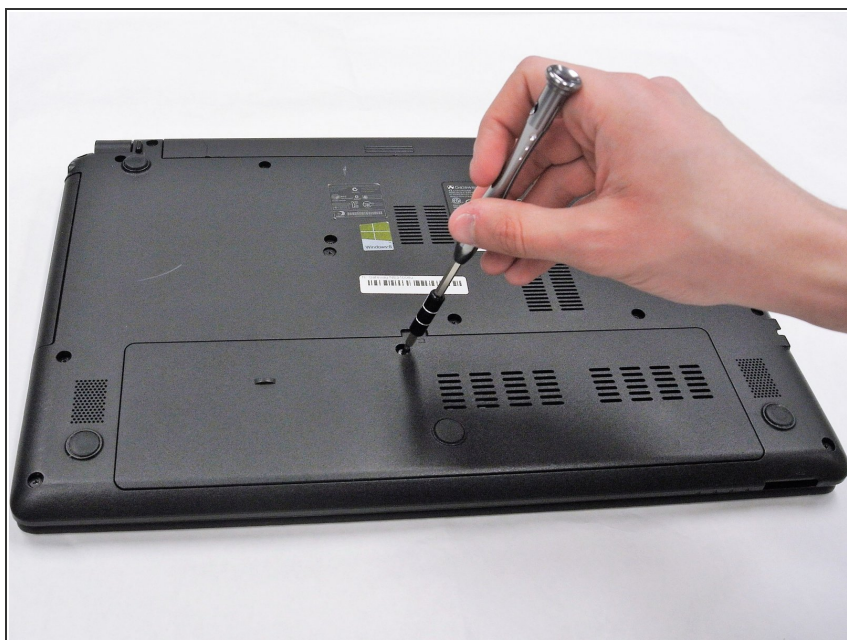
- [Spudger](#) (1)
- [Prying and Opening Tool Assortment](#) (1)
- [Magnetic Project Mat](#) (1)
- [Phillips #0 Screwdriver](#) (1)

## Step 1 — Hard Drive



- ⓘ Ensure device is powered off and unplugged from a power source. Place the device upside down.

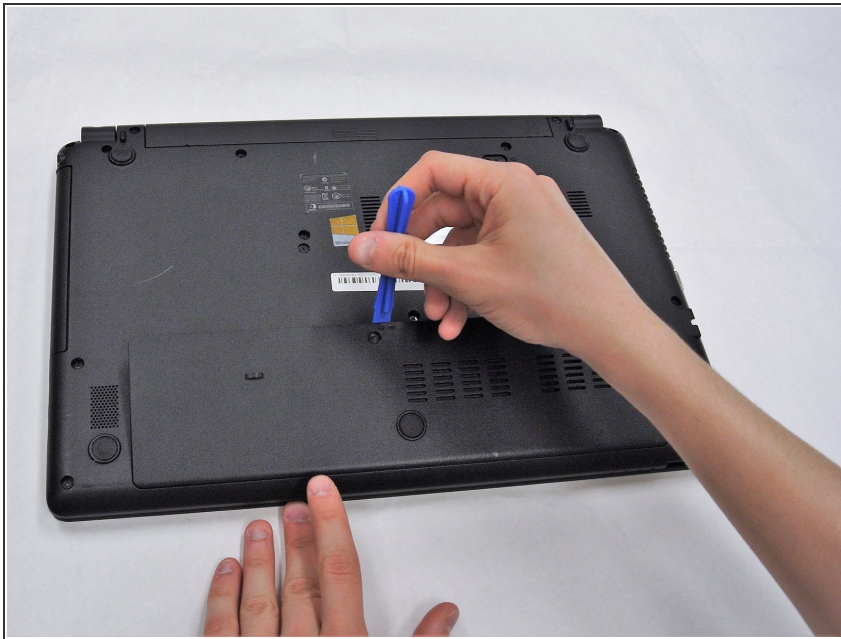
## Step 2



- Use a PH0 Phillips head screwdriver to remove the 9.0 mm screw on the rectangular panel underneath the device.

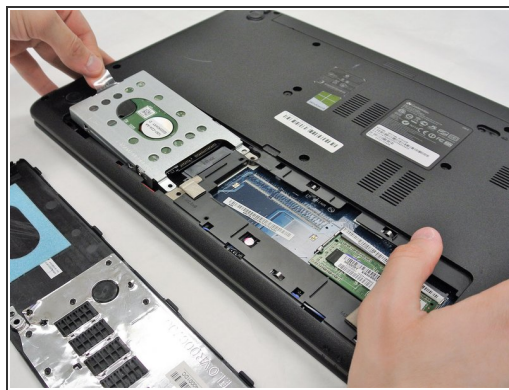


### Step 3



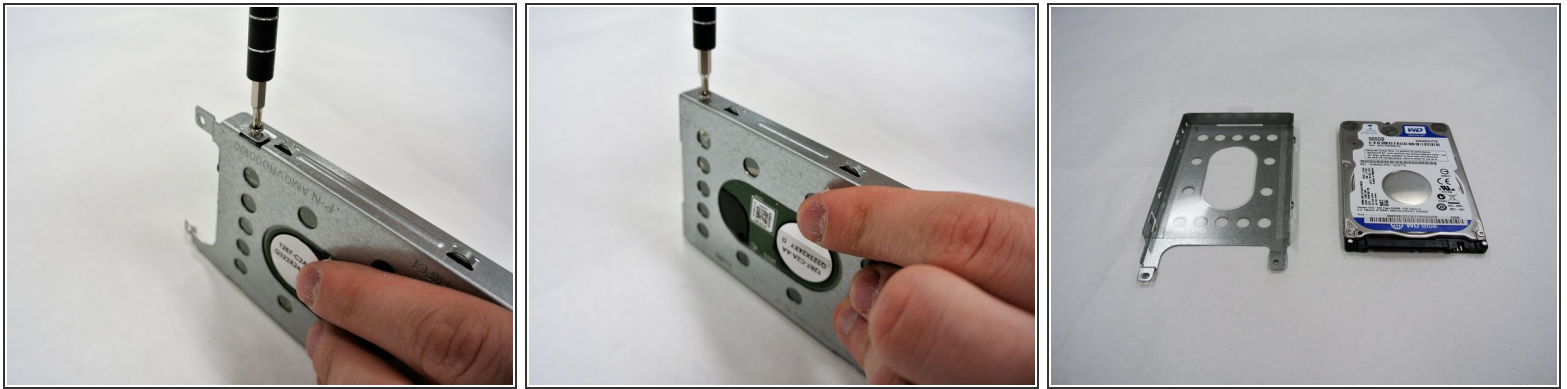
- Use a plastic opening tool to pry open the rectangular panel the 9.0 mm screw was removed from.

### Step 4



- Remove a single 9.0 mm screw on the silver box containing the hard drive. Pull the plastic flap at the side opposite to the side of the screw housing back in order to remove the silver box containing the hard drive.

## Step 5



- Remove the two 9.0 mm screws on each side of the silver box to slide the hard drive from the silver box housing.

## Step 6 — RAM



- Use your fingers to pull the two metal hinges on either side of the RAM card.
- From here the card should lift upwards and pull off of the device easily.

To reassemble your device, follow these instructions in reverse order.