



Gateway NE52203u Battery Replacement

Replacing the Gateway NE52203u Battery.

Written By: Jimmy Ta



INTRODUCTION

So your laptop won't power on and you've already tried charging it? A bad battery is most likely the problem and you'll have to buy a new one. This guide will provide you with the steps necessary to replace your old battery with a new one, so you can get back to work!



TOOLS:

- [Phillips #00 Screwdriver](#) (1)



PARTS:

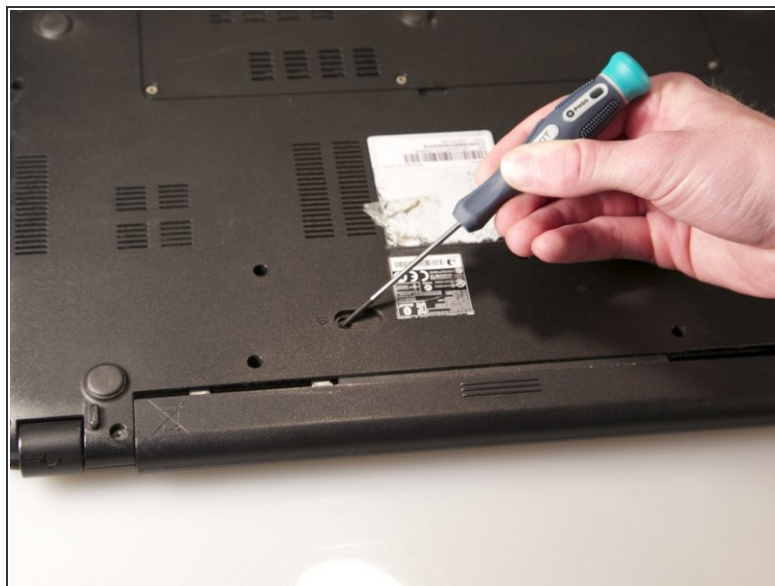
- [Gateway NE52203u Replacement Battery](#) (1)

Step 1 — Battery



- Flip the device over onto its backside in order to access the battery.

Step 2



- Locate the battery release latch and slide it over to the other side.
- ❗ A small tool like a pen or screwdriver may be helpful in sliding the latch to release the battery.

Step 3



- Grab the newly ejected battery from the device to completely remove it.
- ★ When reinserting the new battery, make sure the prongs on the battery are aligned with the corresponding holes on the laptop.

To reassemble your device, follow these instructions in reverse order.