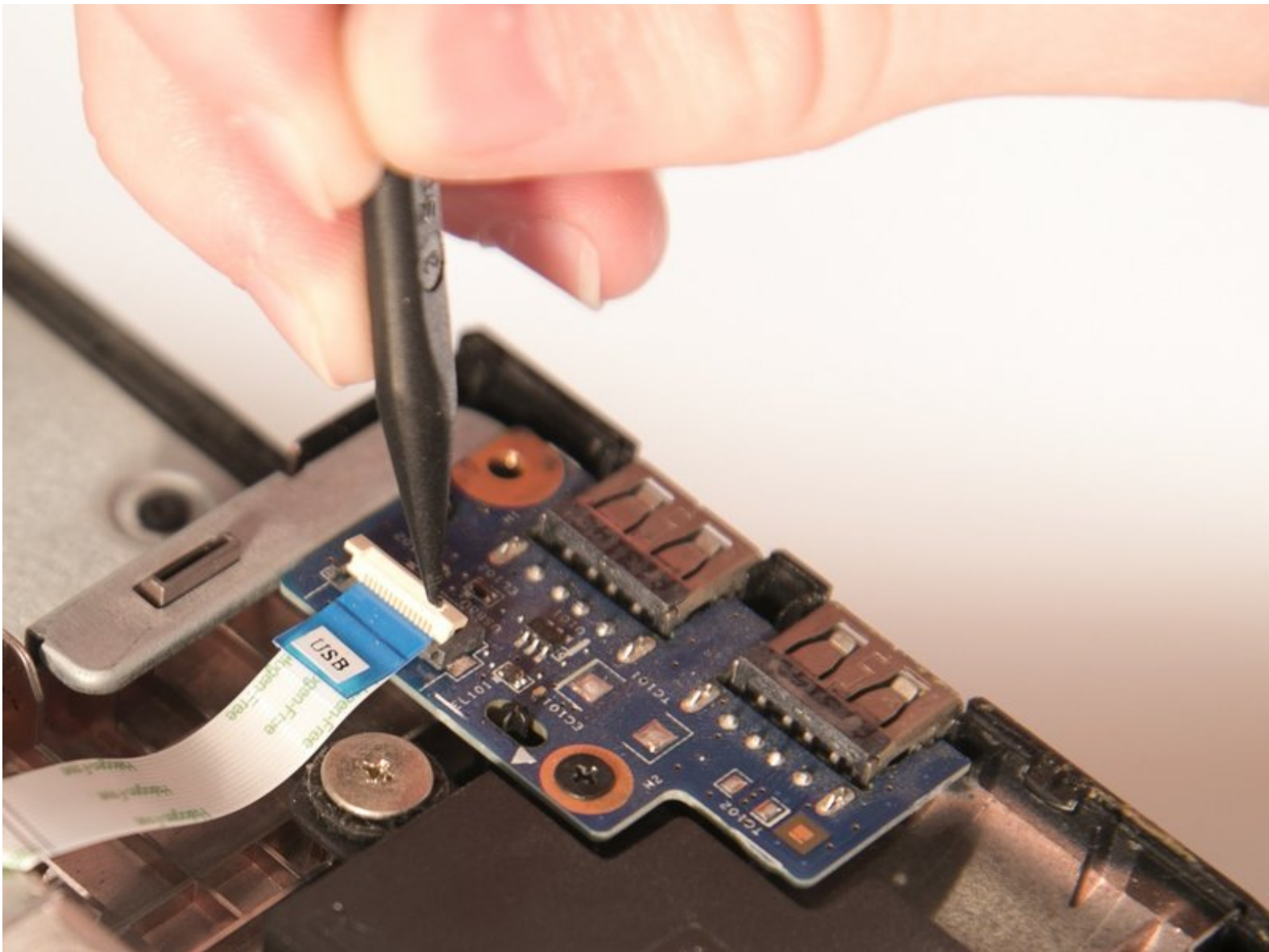




Gateway NE52203u USB Port Replacement

Replacing the Gateway NE52203u USB Port.

Written By: Stephen Spees



INTRODUCTION

So your laptop won't download data when you plug in a USB device? The problem is most likely a non-functioning USB port, and you'll have to replace it. This guide will provide you with the steps you need in order to replace your old USB port with a new one.

TOOLS:

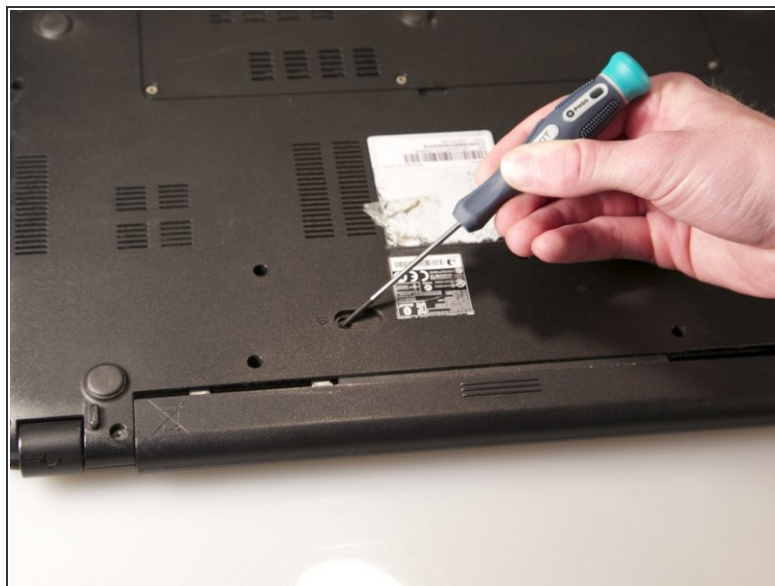
- [Phillips #00 Screwdriver](#) (1)
 - [Spudger](#) (1)
-

Step 1 — Battery



- Flip the device over onto its backside in order to access the battery.

Step 2



- Locate the battery release latch and slide it over to the other side.

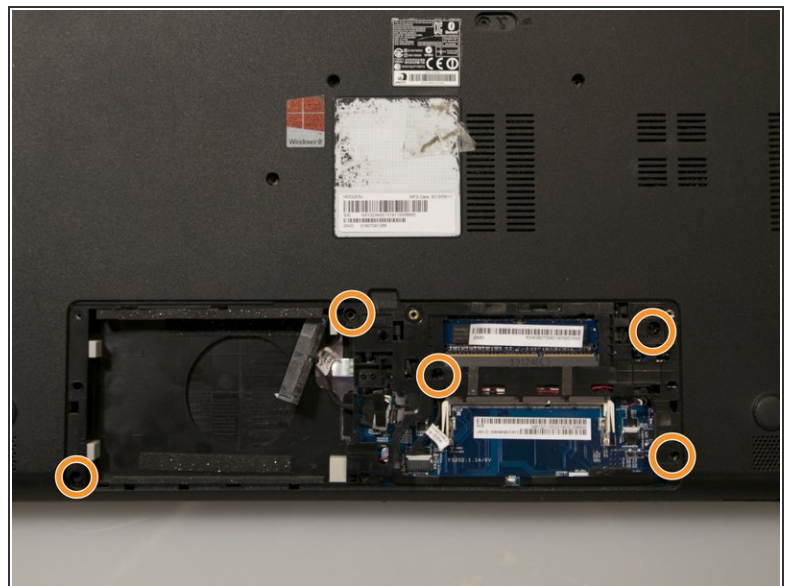
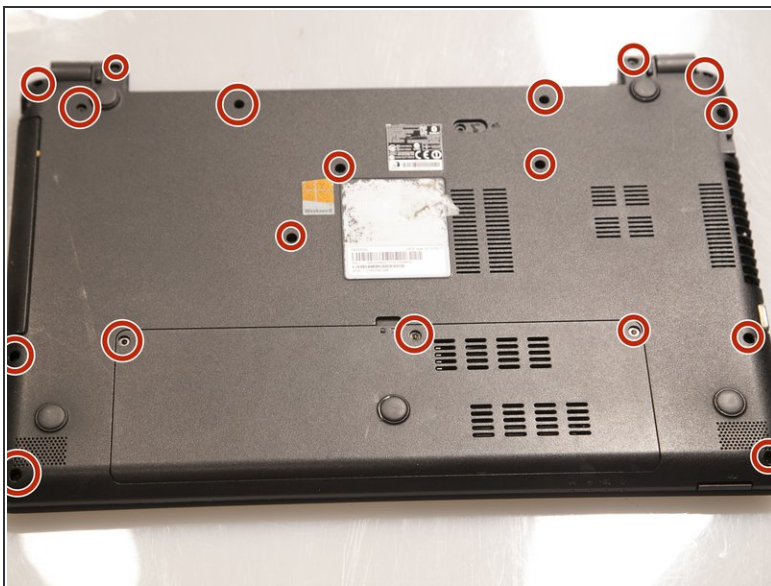
i A small tool like a pen or screwdriver may be helpful in sliding the latch to release the battery.

Step 3



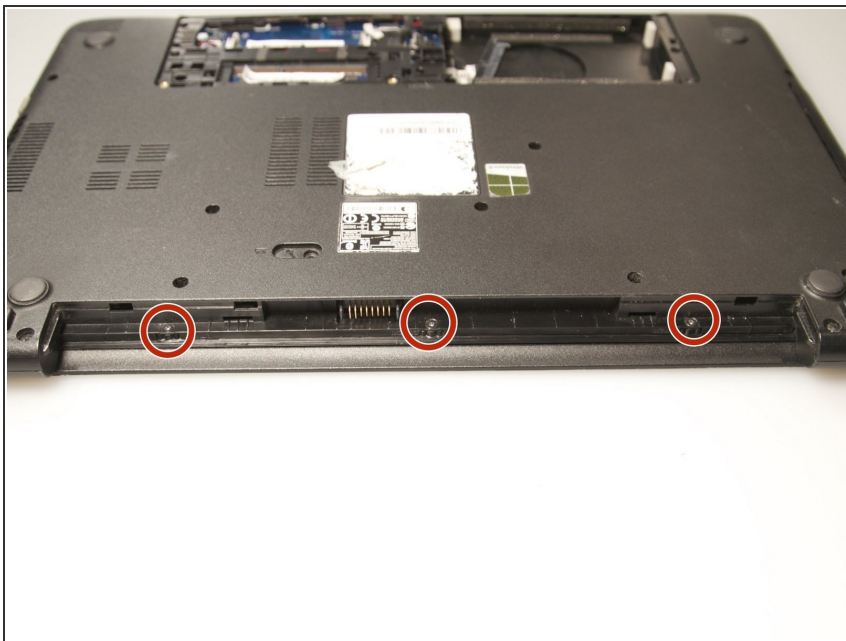
- Grab the newly ejected battery from the device to completely remove it.
- ★ When reinserting the new battery, make sure the prongs on the battery are aligned with the corresponding holes on the laptop.

Step 4 — Touchpad Assembly



- Remove 18 6.0 mm Phillips #00 screws from the bottom of the laptop.
- Remove 5 6.0 mm Phillip #00 screws from under cover.

Step 5



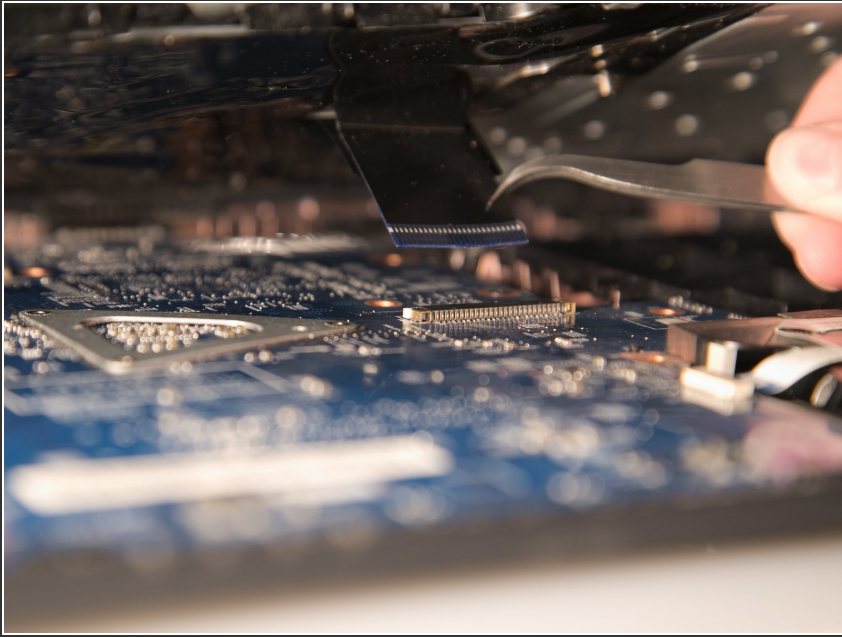
- Remove three 2.9 mm Phillips #00 screws from the battery compartment.

Step 6



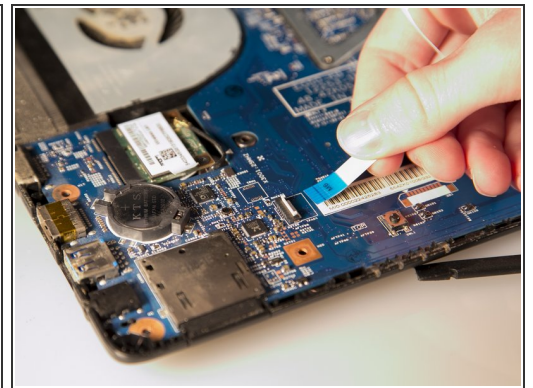
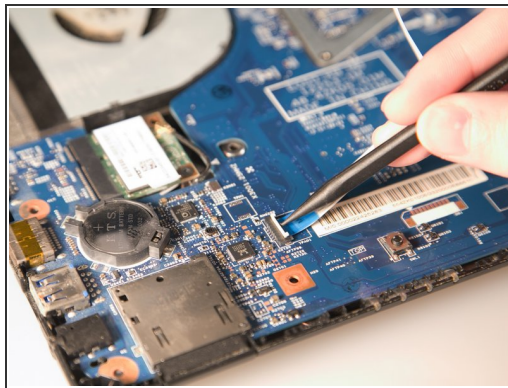
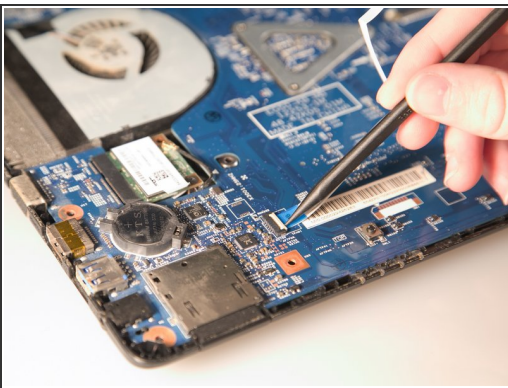
- Separate the bottom panel from the touchpad assembly by inserting a plastic opening tool between them on all four sides.

Step 7



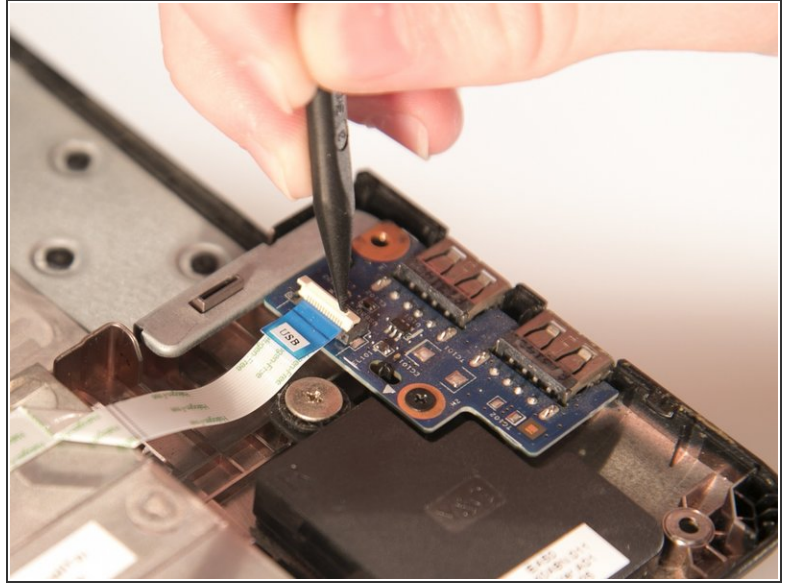
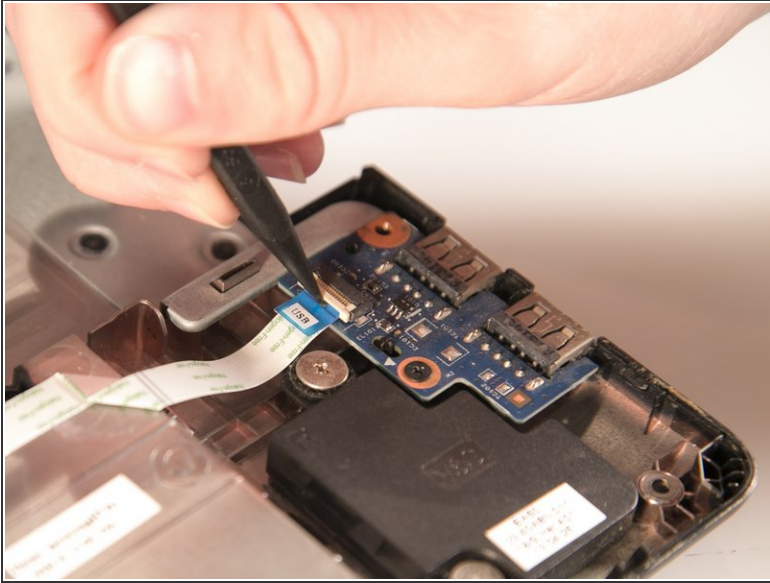
- Pull black ribbon wire from port using tweezers in order to completely separate touchpad assembly from bottom assembly.

Step 8



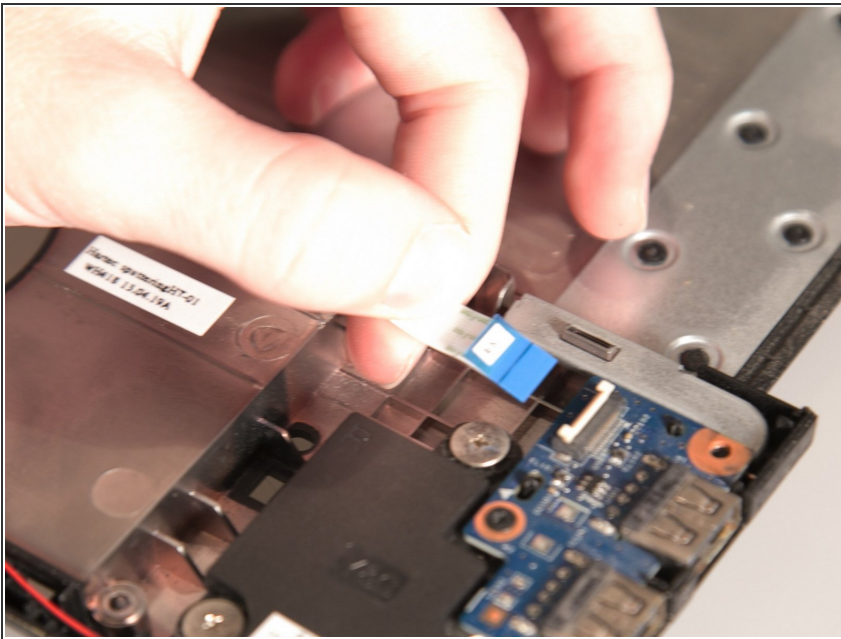
- Disconnect the two ZIF ports that attach the touchpad assembly to the motherboard.
- First flip open the flap covering the ribbon using a spudger or fingernail.
- Second gently pull the ribbon away from the port.

Step 9 — USB Port



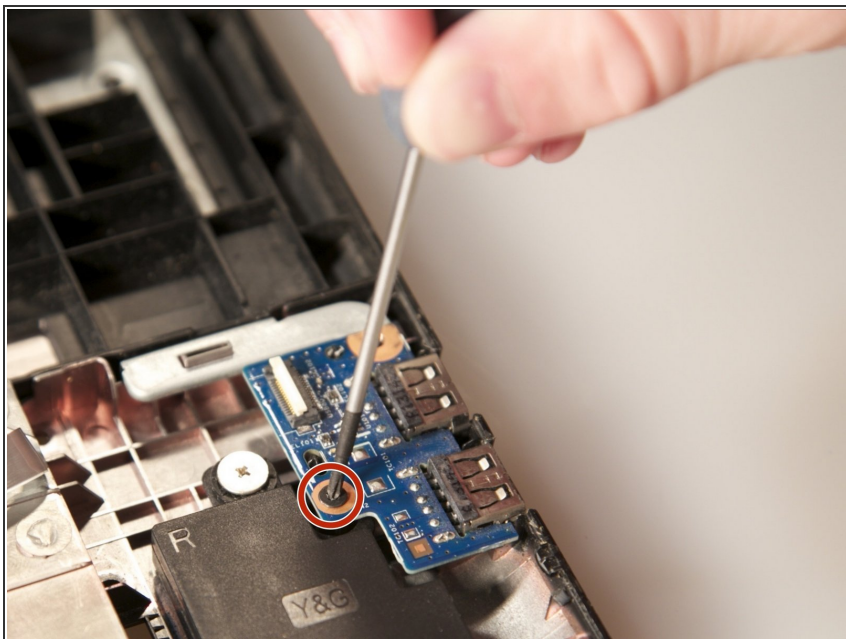
- Using a spudger, pry the ZIF connector upwards.

Step 10



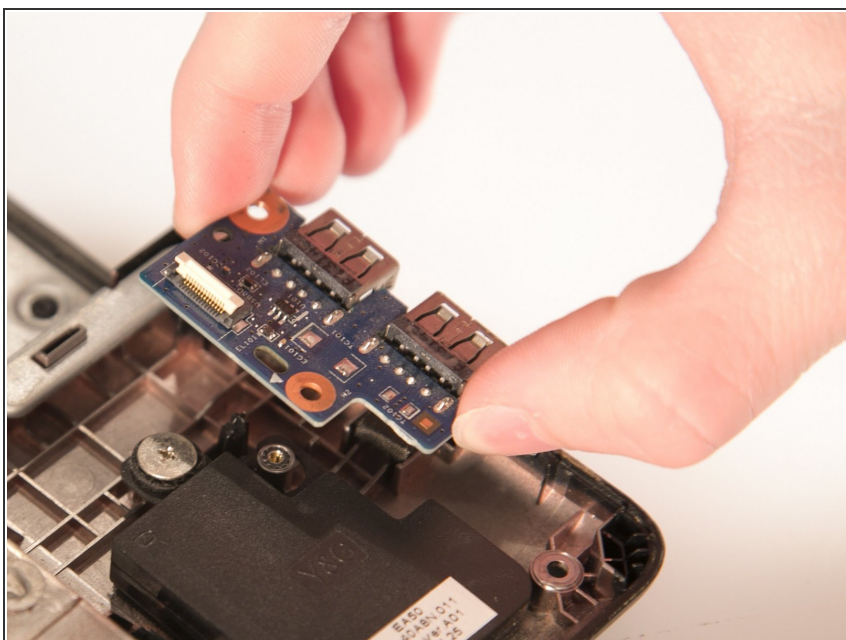
- Use your fingers to gently disconnect the ribbon wire from the USB circuit board.

Step 11



- Using a #00 Phillips head screwdriver, remove the 2.9 mm screw on the USB circuit board.

Step 12



- Finally, remove the old USB port.

To reassemble your device, follow these instructions in reverse order.