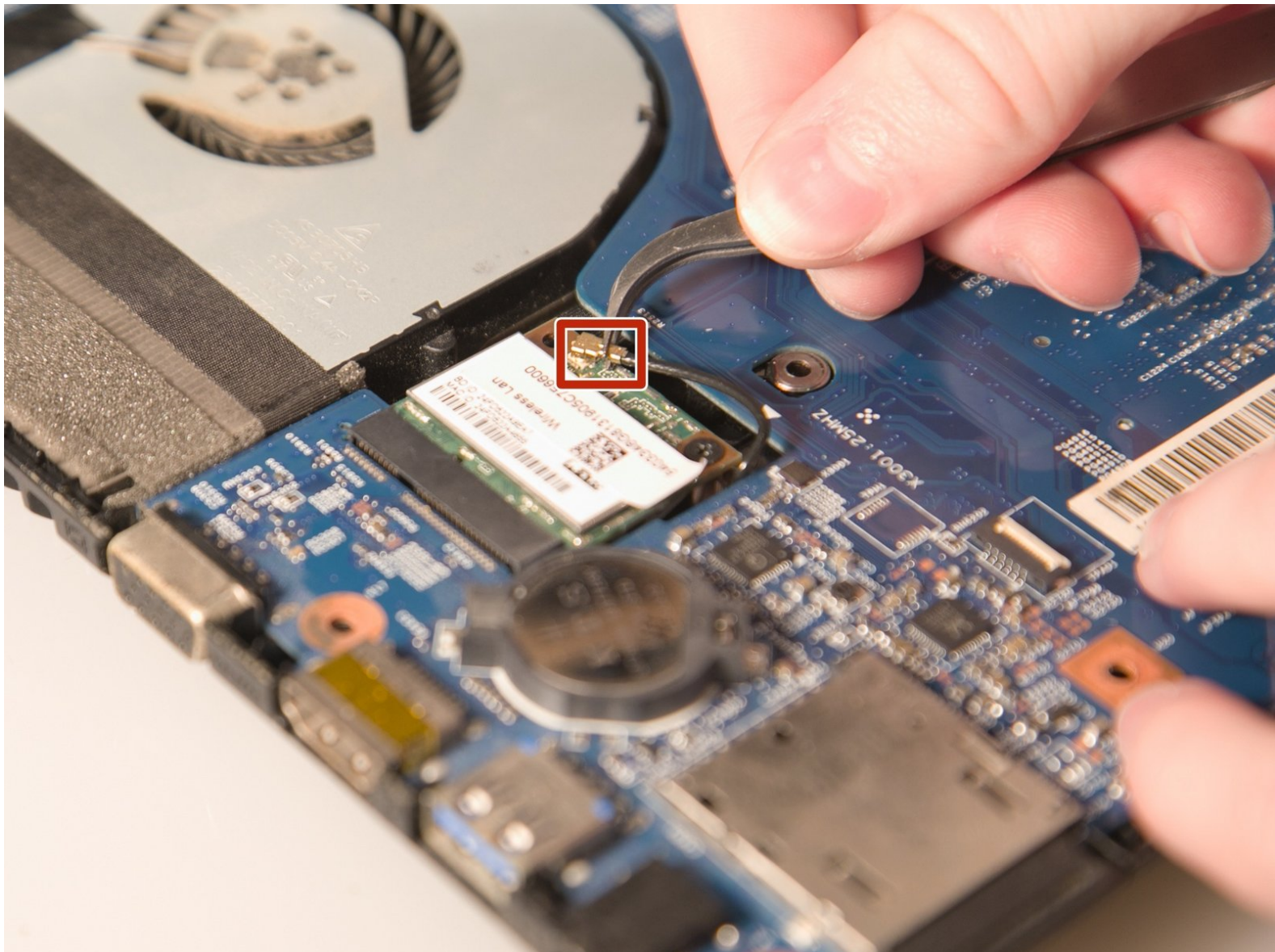




Gateway NE52203u Wireless Card Replacement

Replacing the Gateway NE55203u Wireless Card.

Written By: Stephen Spees



INTRODUCTION

If you can't connect to a wireless internet signal, a faulty wireless card is most likely the problem and you'll have to replace it with a functioning one. This guide will provide you with the steps necessary to replace your old wireless card with a new one, so you can get back to surfing the web!



TOOLS:

- [Phillips #00 Screwdriver](#) (1)
 - [Tweezers](#) (1)
-

Step 1 — Battery



- Flip the device over onto its backside in order to access the battery.

Step 2



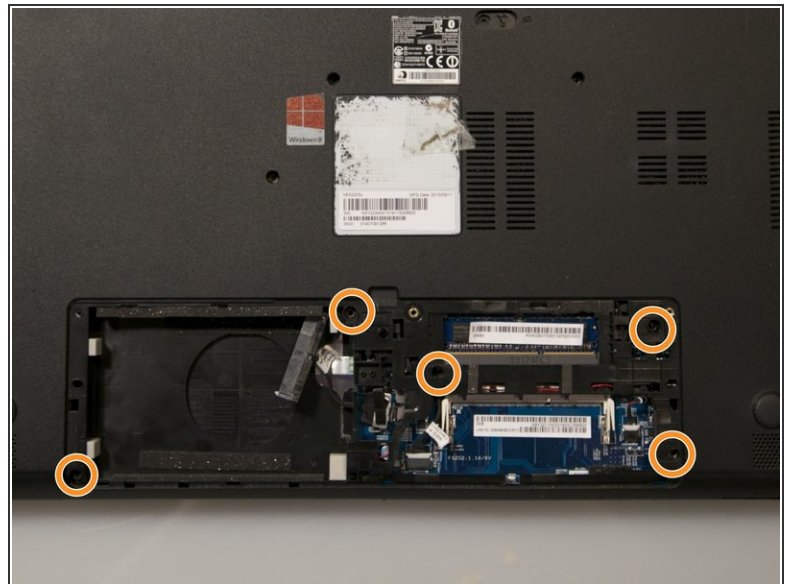
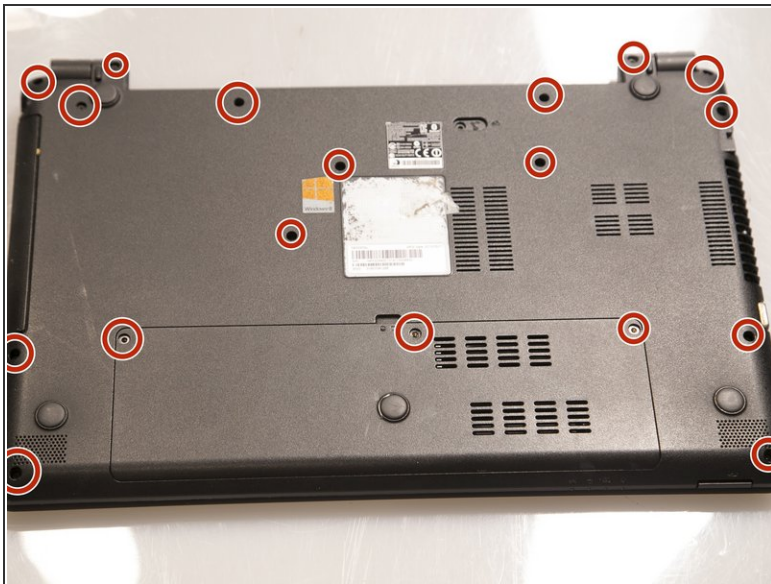
- Locate the battery release latch and slide it over to the other side.
- ❗ A small tool like a pen or screwdriver may be helpful in sliding the latch to release the battery.

Step 3



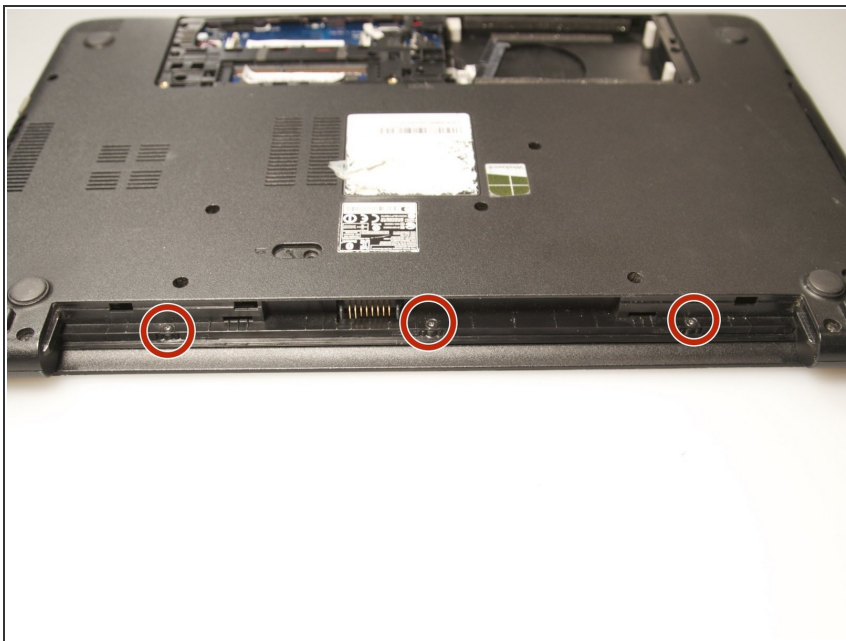
- Grab the newly ejected battery from the device to completely remove it.
- ★ When reinserting the new battery, make sure the prongs on the battery are aligned with the corresponding holes on the laptop.

Step 4 — Touchpad Assembly



- Remove 18 6.0 mm Phillips #00 screws from the bottom of the laptop.
- Remove 5 6.0 mm Phillip #00 screws from under cover.

Step 5



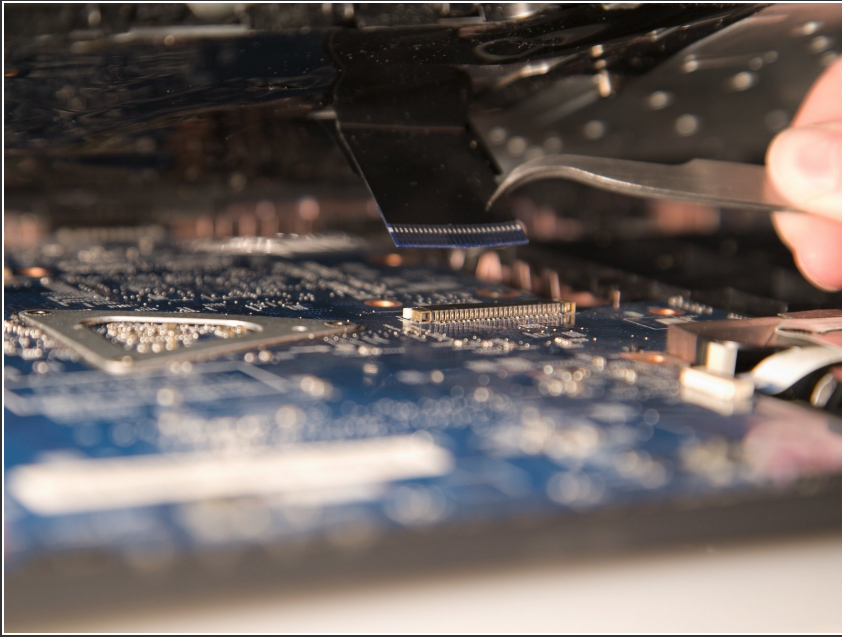
- Remove three 2.9 mm Phillips #00 screws from the battery compartment.

Step 6



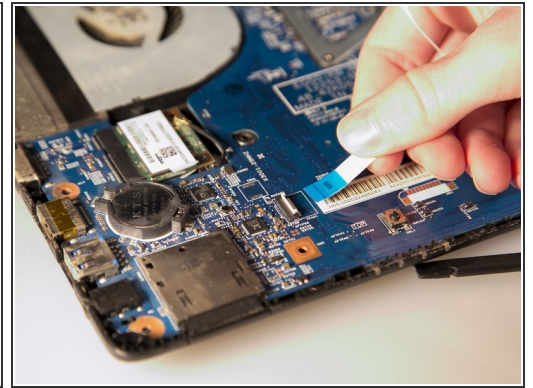
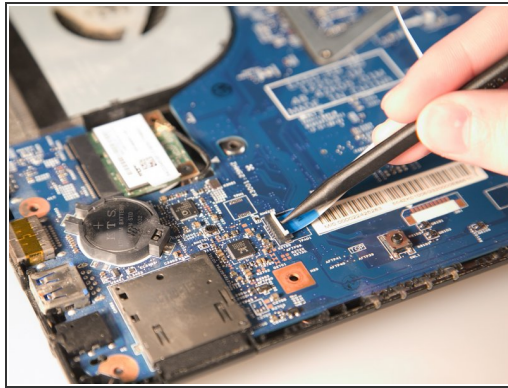
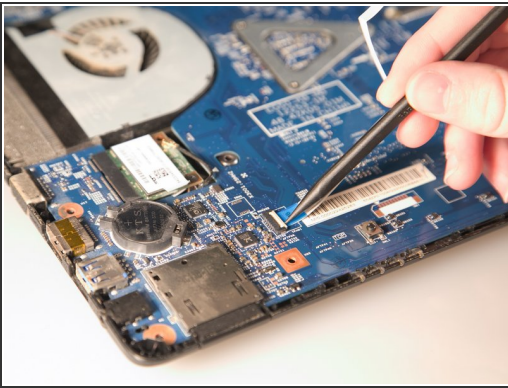
- Separate the bottom panel from the touchpad assembly by inserting a plastic opening tool between them on all four sides.

Step 7



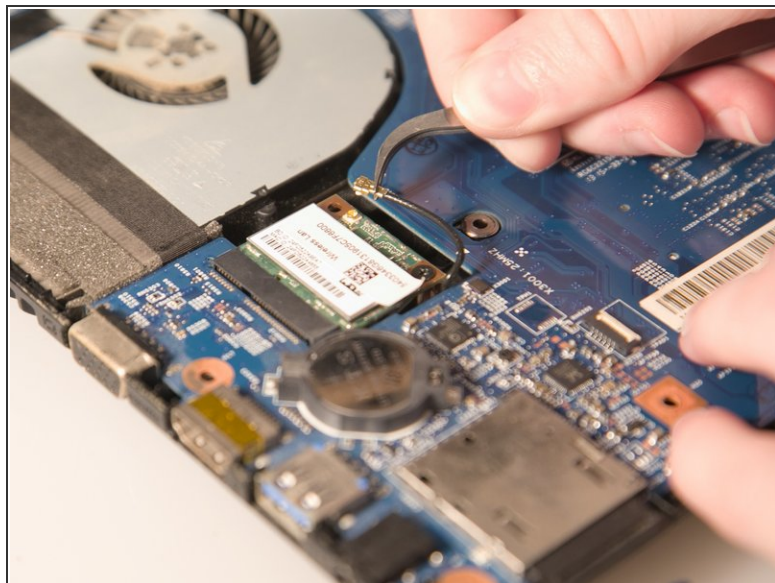
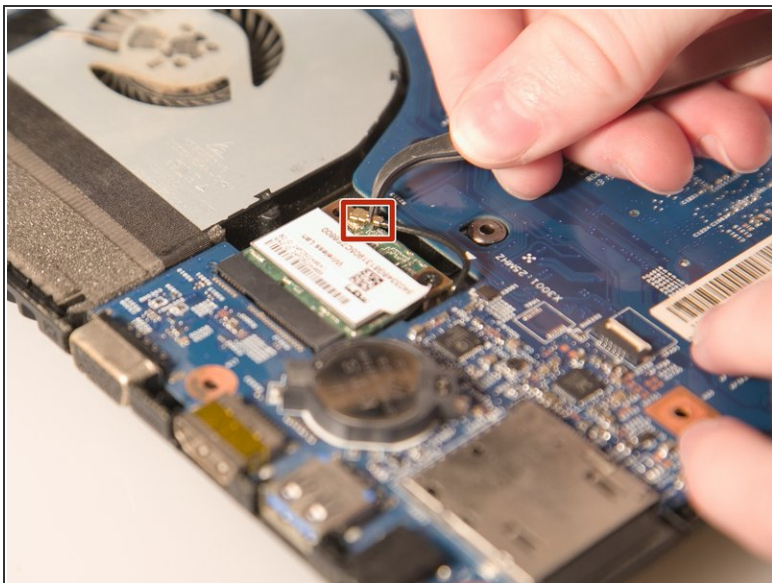
- Pull black ribbon wire from port using tweezers in order to completely separate touchpad assembly from bottom assembly.

Step 8



- Disconnect the two ZIF ports that attach the touchpad assembly to the motherboard.
- First flip open the flap covering the ribbon using a spudger or fingernail.
- Second gently pull the ribbon away from the port.

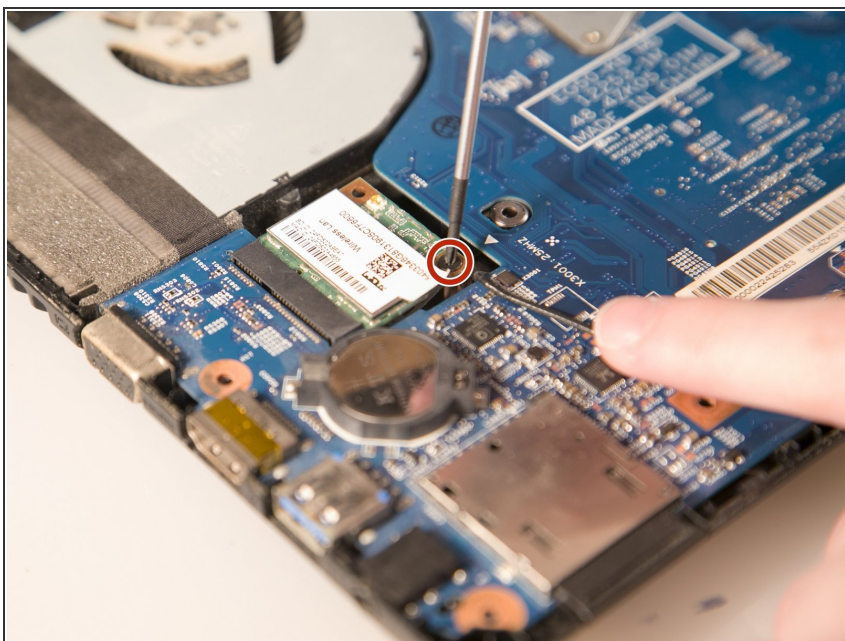
Step 9 — Wireless Card



- Grab the antenna cable with tweezers and lift up to pull it off.

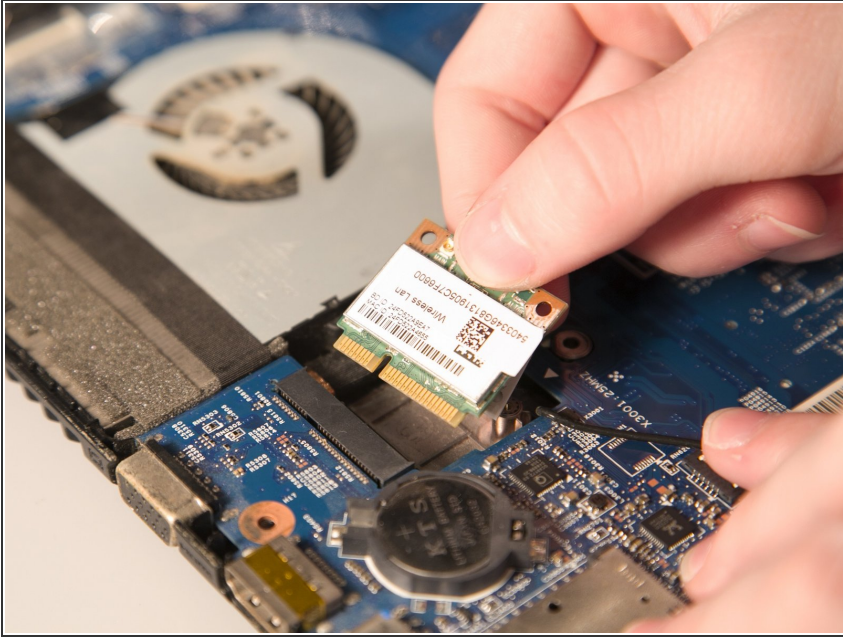
i The antenna is the small black cable with the golden head

Step 10



- Remove the one 2.9 mm Phillips #00 screw holding down the wireless card in place.

Step 11



- After the screw is removed, the card will spring upwards slightly. Pull out the old wireless card from its port.

To reassemble your device, follow these instructions in reverse order.