



# Gateway NV52 Hard Drive Replacement

This guide will instruct you on how to successfully remove the Hard Drive.

Written By: Irma Marin



---

## INTRODUCTION

There will be prerequisites that you need to be complete before displacing the Hard Drive. The prerequisites are available to you in the repair guide manual.

---

### **TOOLS:**

- [Phillips #0 Screwdriver](#) (1)
-

## Step 1 — Base Cover



- Remove the five identical 3/16" Phillips screws that secure the hard drive and memory cover using a Phillips #0 Screwdriver.

## Step 2



- Lift up the base cover from the the top with your hands to a 90 degree angle.
- Remove the base cover and place it in a safe and dry place.

## Step 3 — Hard Drive Compartment



- Remove the 1/4" Phillip screw located at the top right of the Hard Drive using a Phillips #0 Screwdriver.

## Step 4



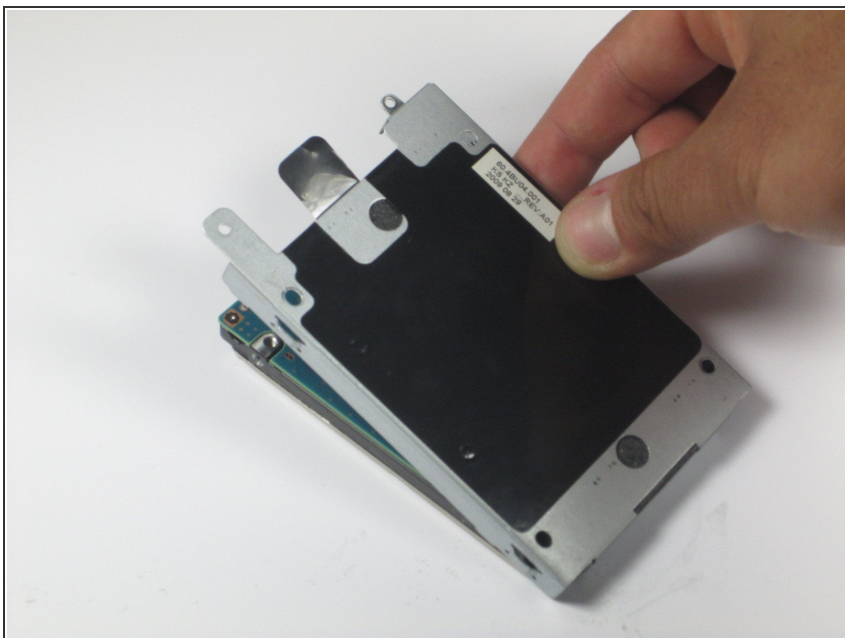
- Remove the Hard Drive component from its compartment. To do so, slide the component downward away from the battery pack.
- Lift the Hard Drive to a 90 degree angle and out of its slot.
- Place the Hard Drive in a designated zone.

## Step 5 — Hard Drive



- Remove the four identical 1/8" Phillip screws located in every corner of the Hard Drive using the Phillips #0 Screwdriver.

## Step 6



- Access to the Hard drive by gently sliding the metal cover away from the Hard Drive.

To reassemble your device, follow these instructions in reverse order.