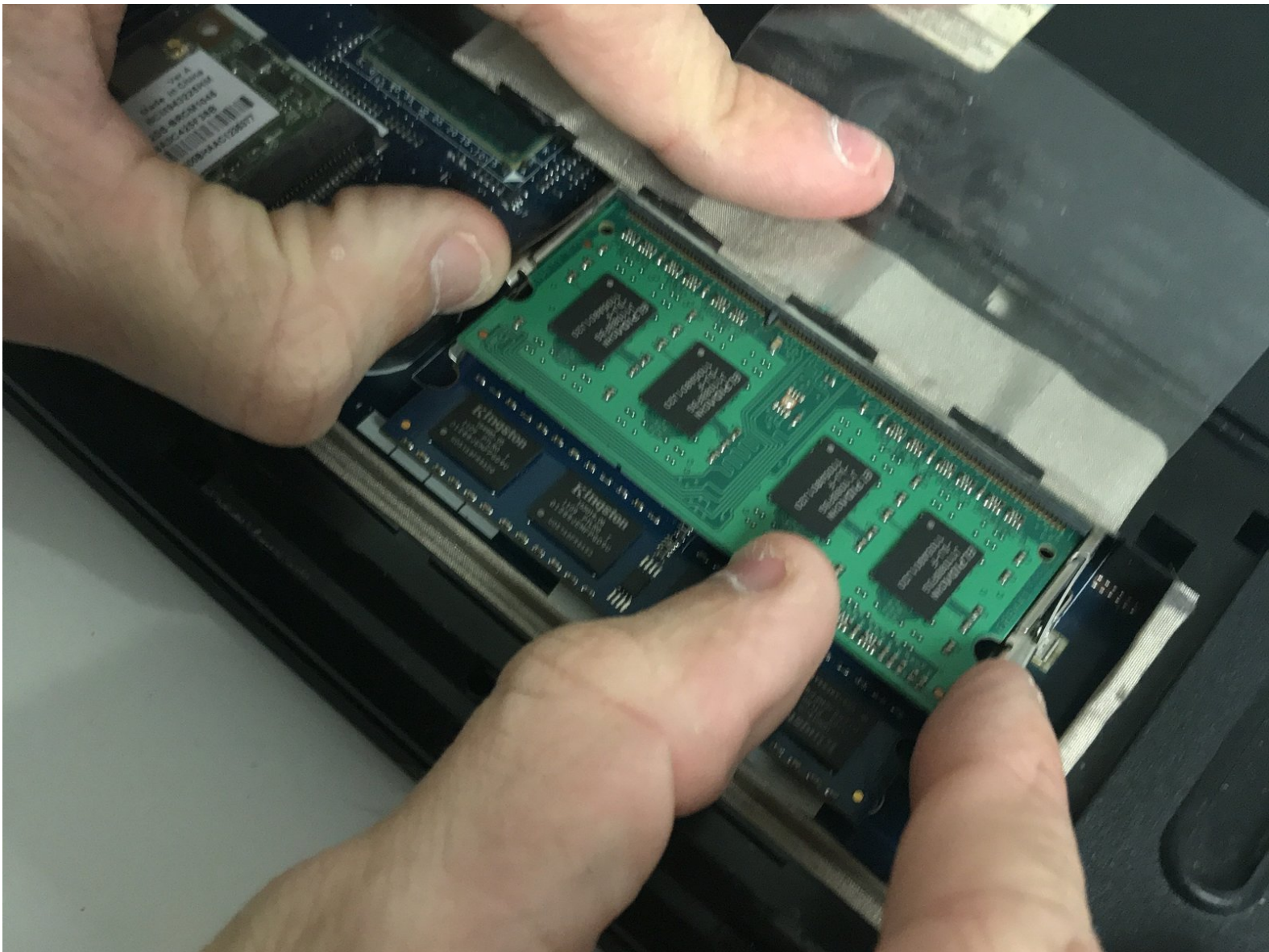




Gateway NV55C49u RAM Replacement

Replace your RAM to fix a lagging, slow, or crashing laptop.

Written By: Matthew



INTRODUCTION

If your laptop is running slowly, or crashing unexpectedly, the issue could be with faulty or insufficient RAM. Use this guide to upgrade or replace the laptop's RAM. The RAM replacement is fairly simple on this laptop because it doesn't require a full disassembly.



TOOLS:

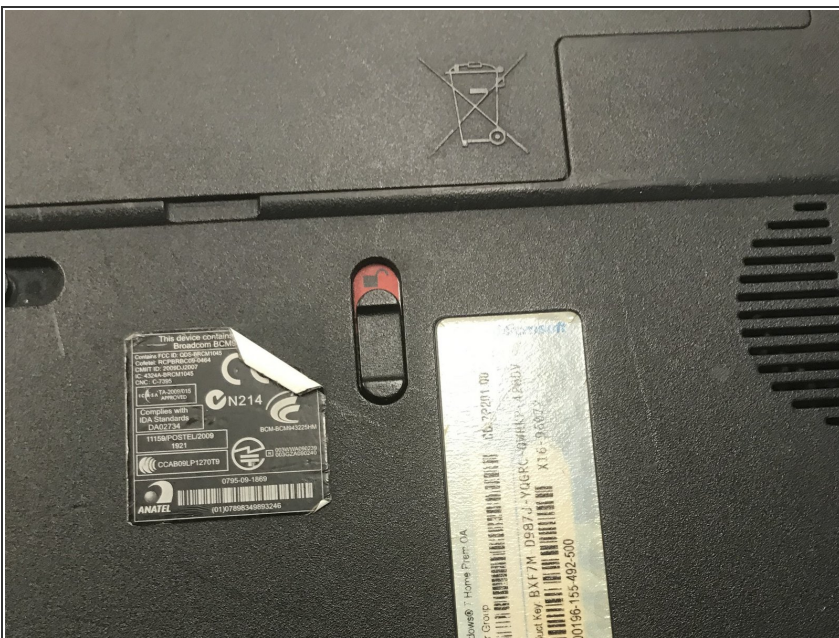
- [Phillips #00 Screwdriver](#) (1)
 - [iFixit Opening Tools](#) (1)
-

Step 1 — RAM



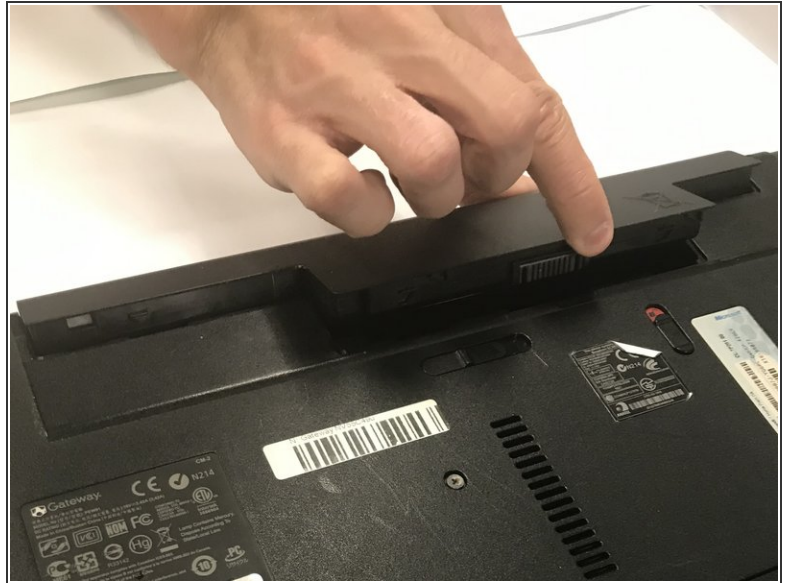
- Flip the laptop bottom side up.

Step 2



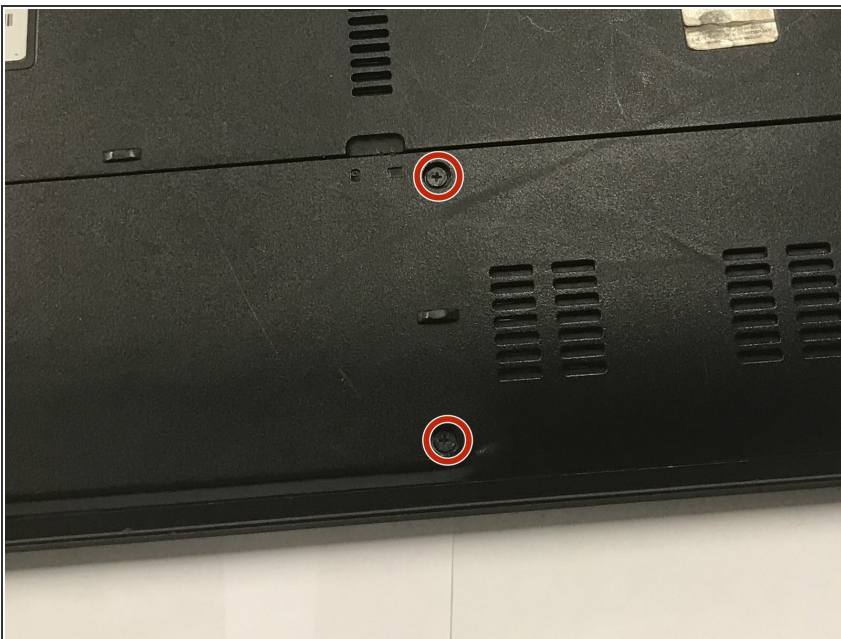
- Slide the battery lock to show the red background.

Step 3



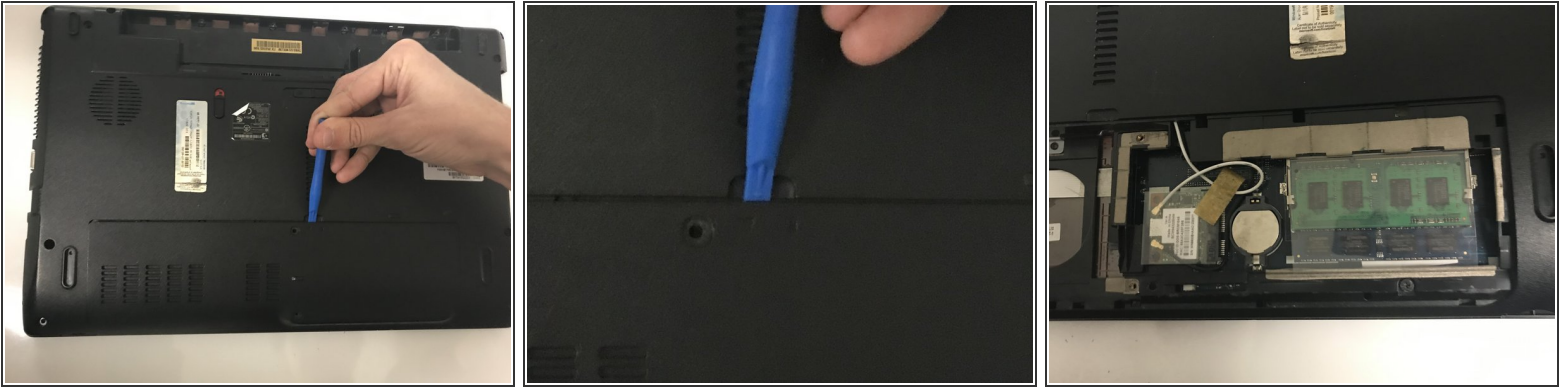
- Push the battery slider to the other side. This will automatically eject the battery.
- You can now remove the battery.

Step 4



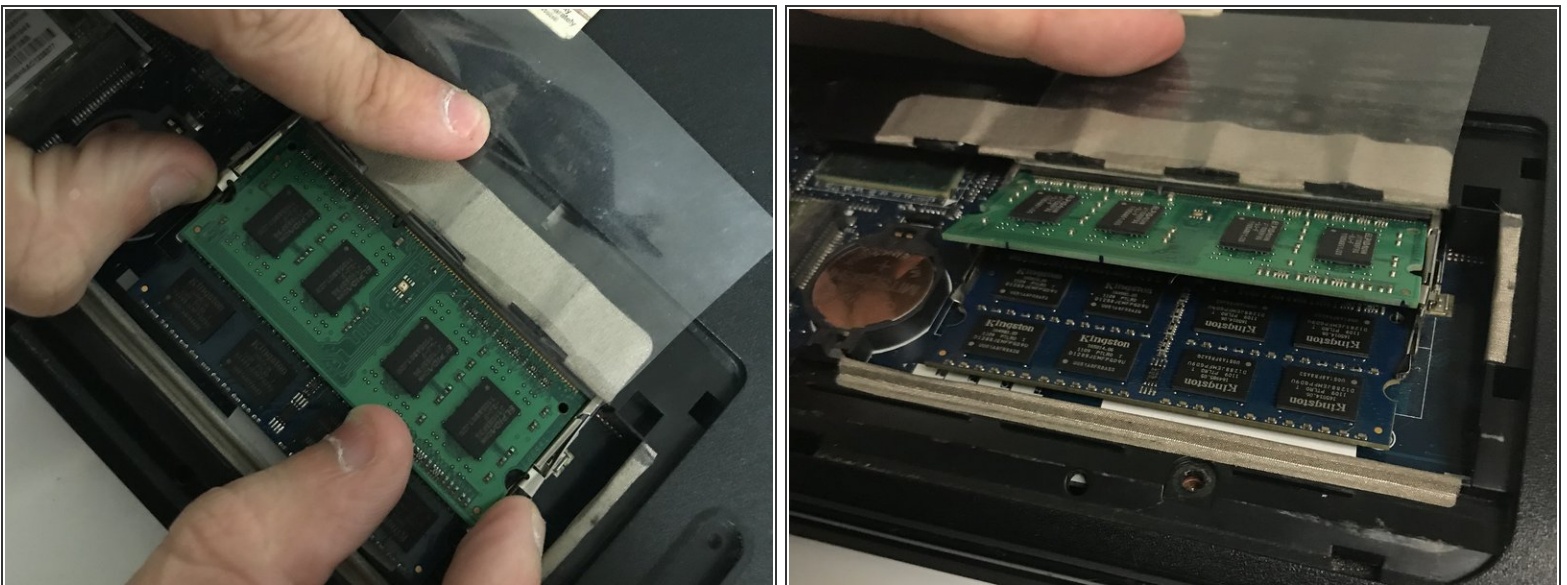
- Remove the two 6.0mm Phillips #00 screws from the back cover.

Step 5





- Remove the back cover by placing the plastic opening tool in the indentation, and prying upwards.

Step 6



- Hold back the plastic that protects the RAM so you can access the clips underneath.
- Gently push the holding clips outwards. The RAM will angle itself upwards.
- Gently remove the RAM from the laptop

 Make sure not to touch any part of the RAM except the sides.

-  When reassembling, insert the RAM into the connector, and then push it down until the clips lock it into place

To reassemble your device, follow these instructions in reverse order.