



Gateway NV59C66u Battery Replacement

This guide will show a step by step set of instructions on how to replace a battery in the Gateway NV59C66u.

Written By: Jackson Gandee

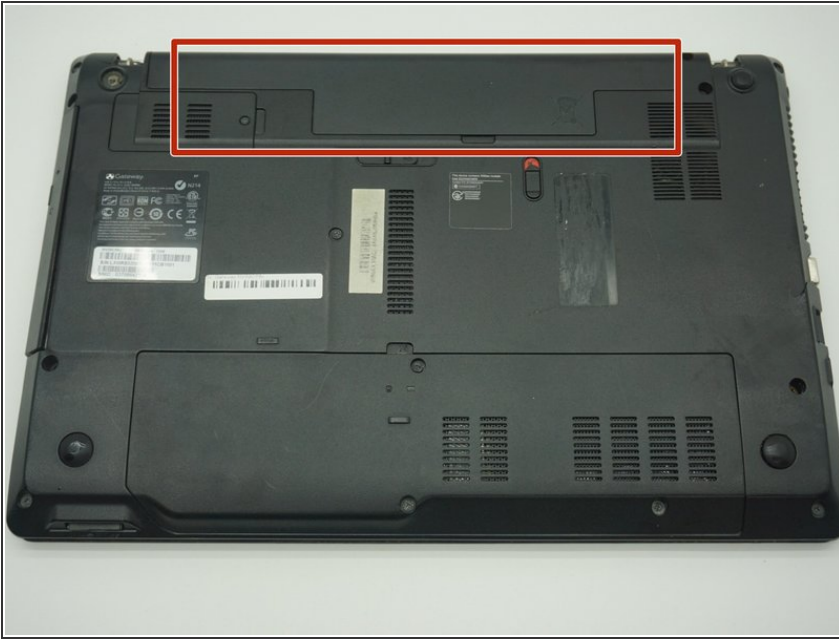




TOOLS:

- [Phillips #0 Screwdriver](#) (1)
-

Step 1 — Battery



- First turn over your laptop.
- Locate the latches in the mid-top area.

Step 2



- Slide the latch unlocking the battery

Step 3



- Slide the horizontal latch to the right to grant access to the battery.

Step 4



- Now the battery is free. Proceed to lift and remove the battery.

To reassemble your device, follow these instructions in reverse order.