



# Gateway NV59C66u LCD Display Replacement

This guide will instruct the user on replacing a broken or nonfunction LCD display.

Written By: Brian Walker





## TOOLS:

- [Spudger](#) (1)
- [iFixit Opening Tools](#) (1)
- [Phillips #0 Screwdriver](#) (1)



## PARTS:

- [LCD Screen for Gateway NV59C66U](#) (1)

## Step 1 — LCD Display



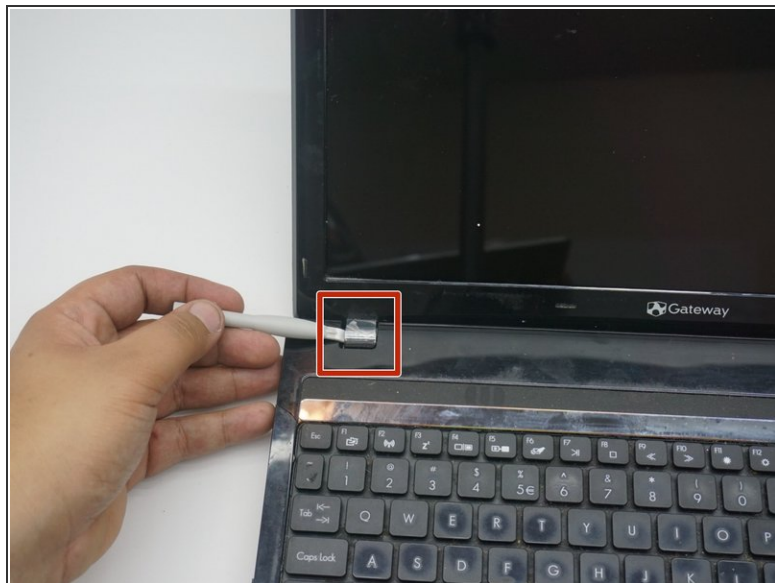
- Remove the black covers over the two screen screws on the bottom corners and unscrew them with a Phillips #0 screwdriver.

## Step 2



- Now gently remove the screen cover by pulling it apart on all sides with a plastic opening tool.
- ⓘ The plastic frame surrounding the screen is very thin and can become brittle with age. Take your time when working the edges to prevent cracking the bezel.

## Step 3



- Carefully pull the latches off with a plastic opening tool.

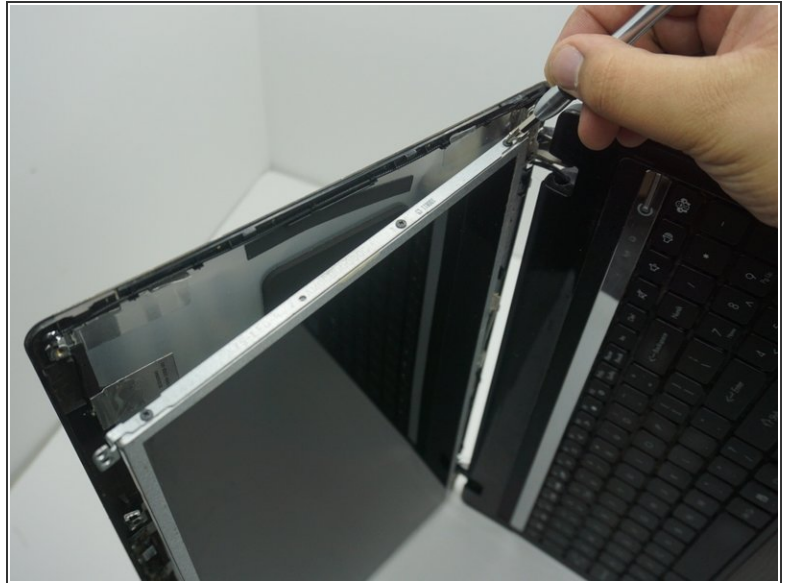
## Step 4



- Remove the screws on the top corners of the screen with a Phillips #0 screwdriver.



## Step 5



- Carefully pop the screen out.

## Step 6



- Be sure to support the screen so the cables are not pulled tight. Setting the computer on it's side can help with this.

## Step 7



- Disconnect the LCD cables on the back of the screen and then remove the screen.

To reassemble your device, follow these instructions in reverse order.