



Gateway NV59C66u Wireless Card Replacement

This will show how to remove your wireless card in the Gateway NV59C66u.

Written By: Jackson Gandee





TOOLS:

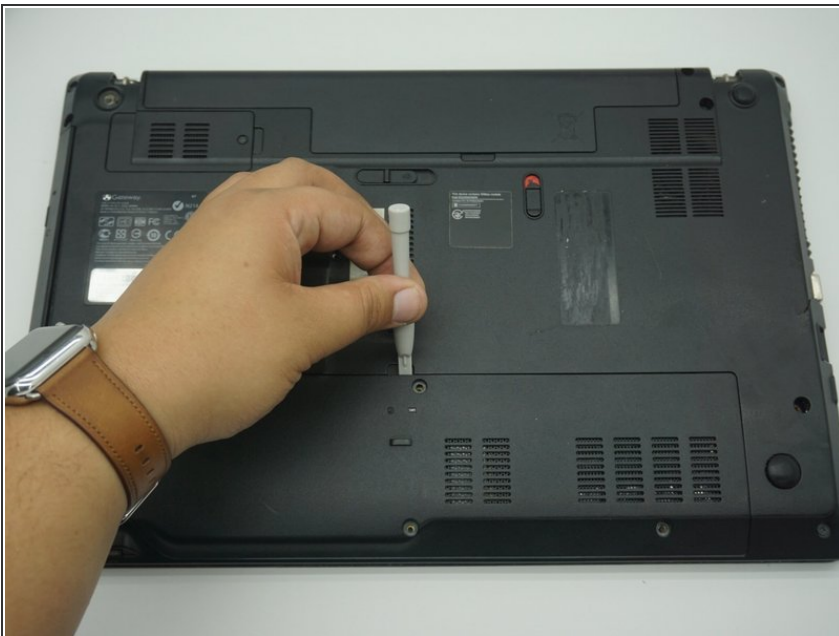
- [Phillips #0 Screwdriver](#) (1)
 - [Spudger](#) (1)
-

Step 1 — Wireless Card



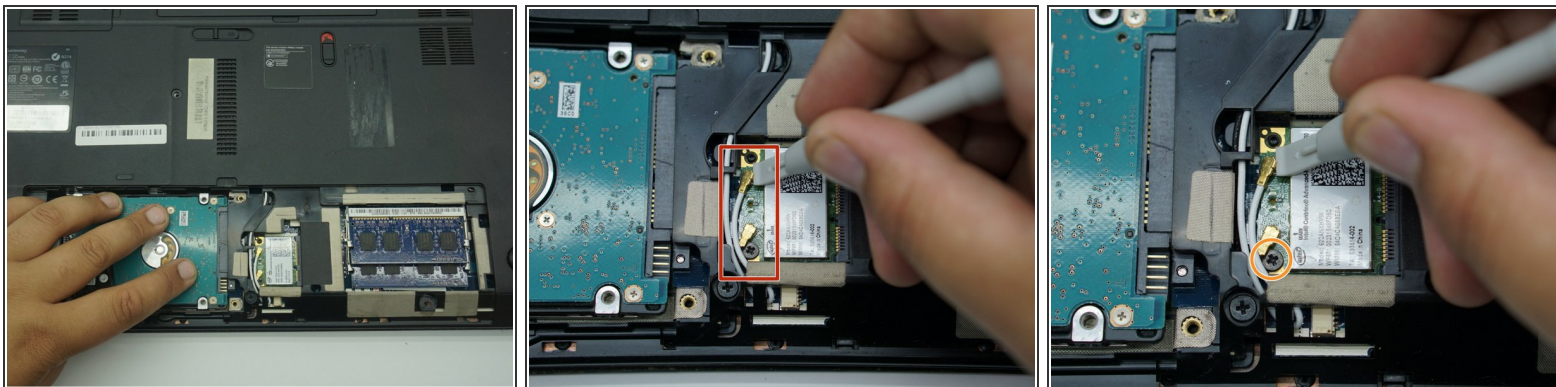
- Remove the four Phillips #0 screws from the service cover on the back of the laptop.

Step 2



- Gently remove the cover to gain access to the wireless card.

Step 3



- Pop the two coaxial antenna cables up from the wireless card with a plastic opening tool.
- Unscrew the one Phillips #0 screw holding down the wireless card.
- Remove the wireless card by sliding it out from its port.

To reassemble your device, follow these instructions in reverse order.