



# Gateway P-6831FX Keyboard Replacement

The keyboard is a component that will allow you to type and input commands. This guide will go over how to remove and replace the keyboard for the P-6831FX.

Written By: Justin Freitas



---

## INTRODUCTION

The keyboard is a component that will allow you to type and input commands on your device. This guide will go over how to remove and replace the keyboard for the P-6831FX.

---



### TOOLS:

- [Phillips #0 Screwdriver](#) (1)
-

## Step 1 — Keyboard



- Open your laptop and lay it flat
- Locate the speaker grill/interaction bar.

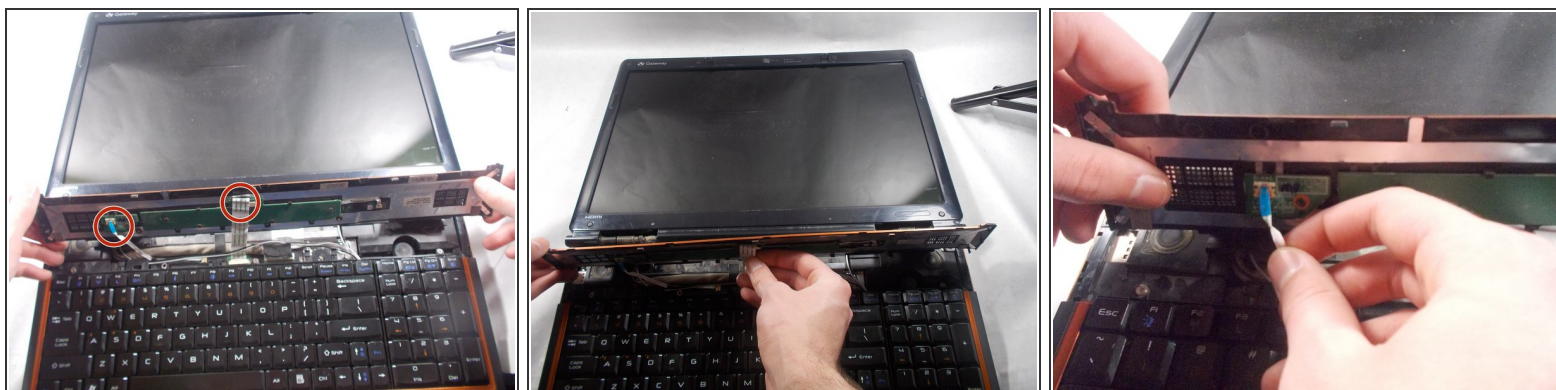
## Step 2



- Remove the speaker grill/interaction bar by pulling up at both edges.



## Step 3



- Detach the two ribbon cables on the underside of the keyboard.

## Step 4



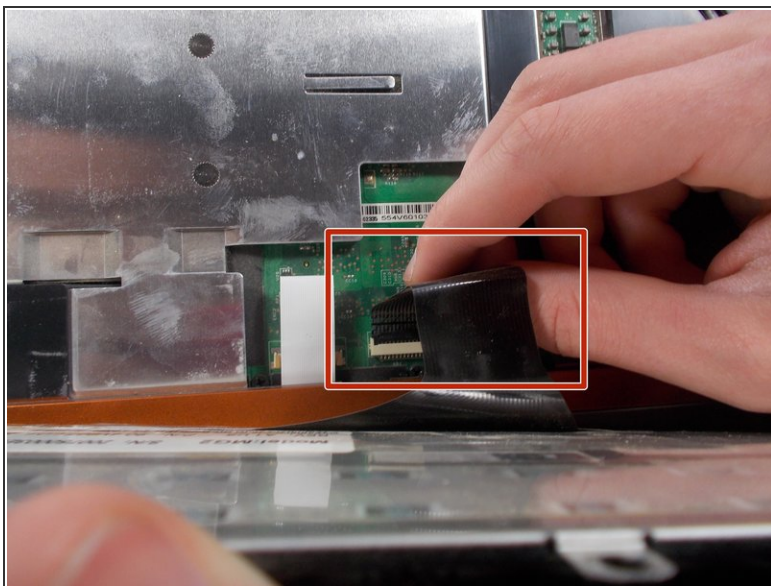
- Remove the five Philips #0 (3mm) screws securing the keyboard in place.

## Step 5



- Pull the keyboard up and away from you.

## Step 6



- Remove the ribbon cable attached underneath to the keyboard.

To reassemble your device, follow these instructions in reverse order.