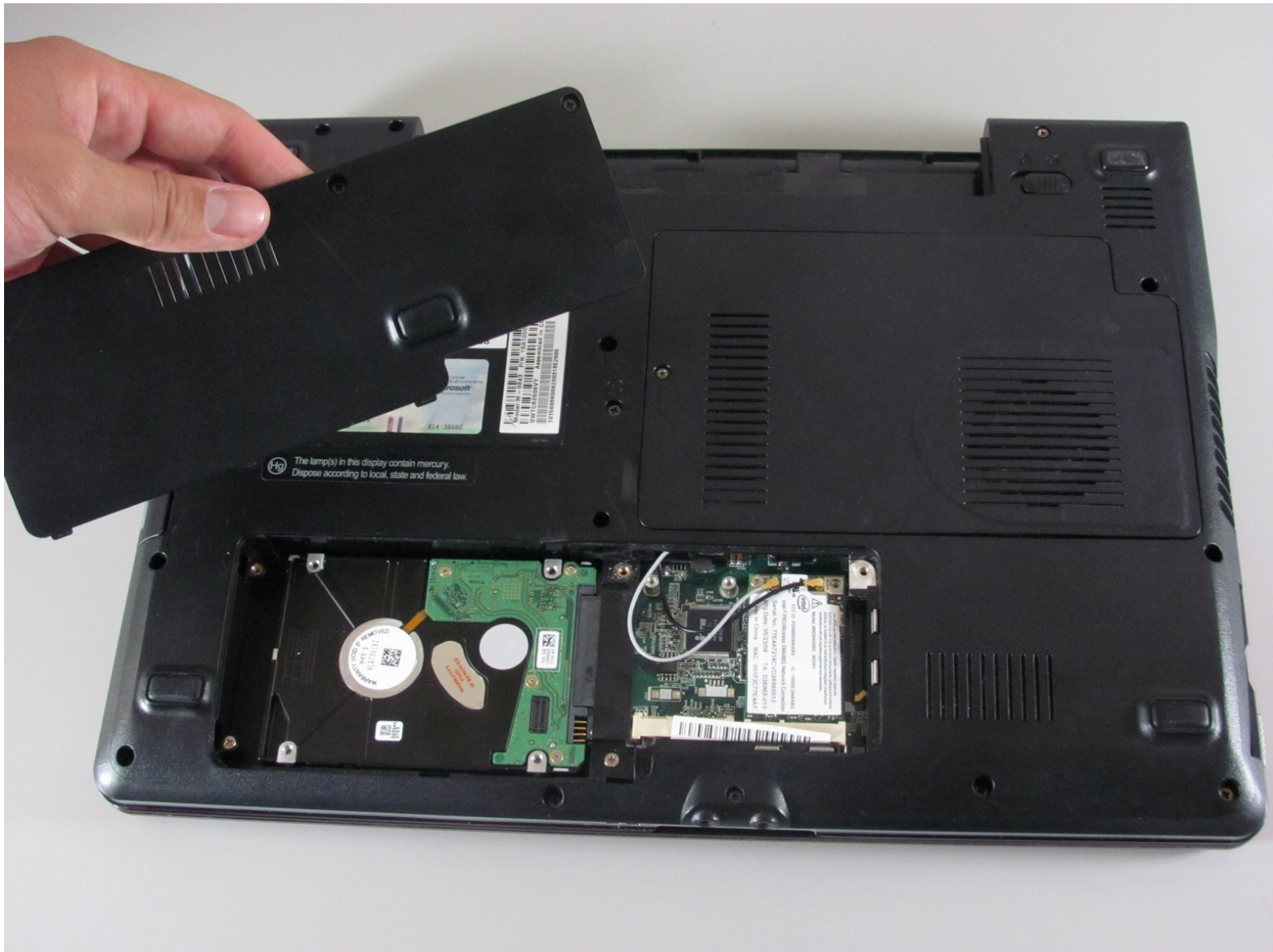




# Gateway SA1 Hard Drive Replacement

Written By: Diego Carteno



# INTRODUCTION

Upgrading the hard drive capacity by replacing the original drive.



## TOOLS:

- [Phillips #00 Screwdriver](#) (1)
- [Spudger](#) (1)



## PARTS:

- [Gateway M- series hard drive](#) (1)

## Step 1 — Battery



- Move the latch to the right of the battery to unlock.

## Step 2




- Slide the latch on the left directly below the battery to unlock and pull out the battery as shown.
- ⓘ The latch must be held in position to remove the battery.



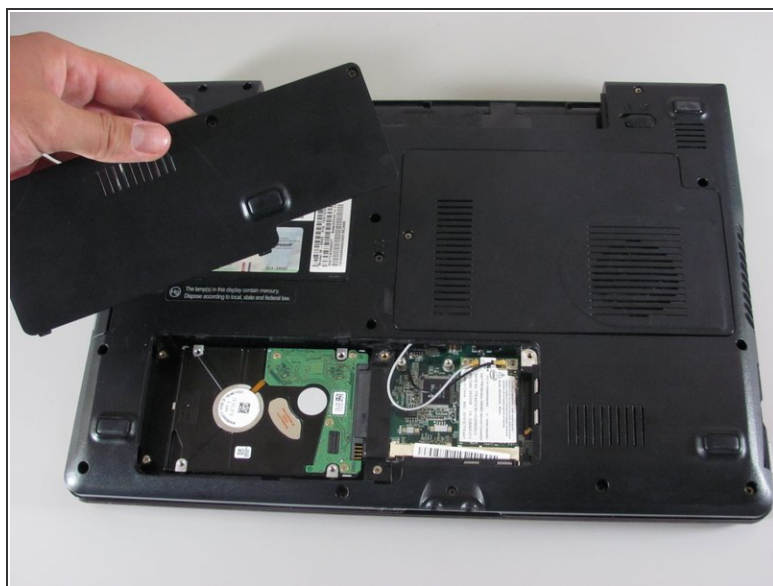
## Step 3 — Hard Drive



 Before you begin, it's recommended that you back up all your computer's information on the original hard drive. Also, verify the laptop is off and all cables are disconnected.

- Turn the laptop over so the bottom is facing up.

## Step 4



- Loosen the three Philips cover screws that secure the hard drive.
- ⓘ These screws cannot be fully removed from the hard drive cover.
- Use the spudger to lift and to remove the hard drive cover.

## Step 5



- Slide the original hard drive to the left and lift it to remove.
- Insert the new hard drive.

To reassemble your device, follow these instructions in reverse order.