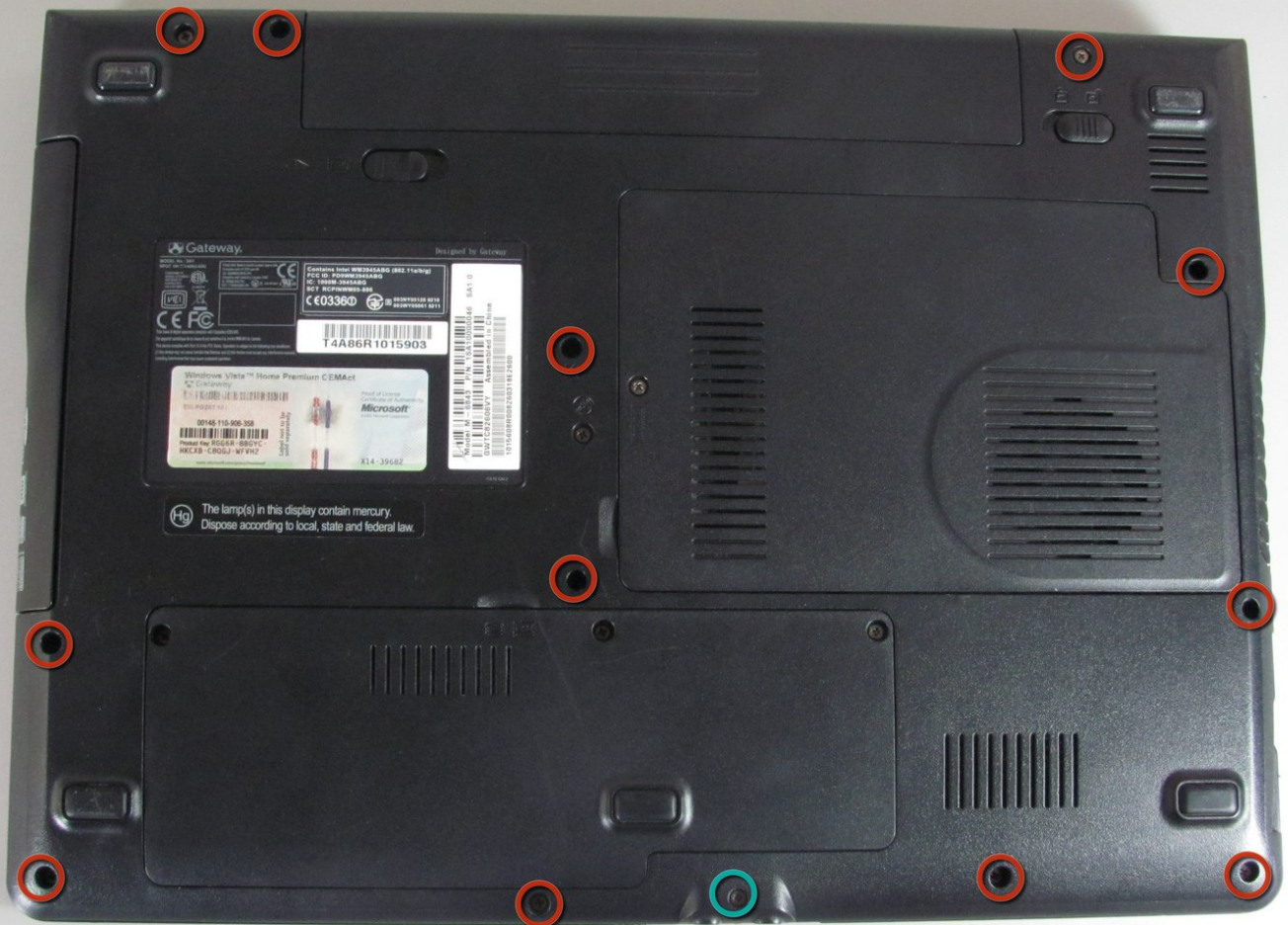




# Gateway SA1 Outer Casing Replacement

Written By: Diego Carteno



---

# INTRODUCTION

Procedure for disassembling the outer casing of the laptop safely.



## TOOLS:

- [Phillips #00 Screwdriver](#) (1)
  - [Spudger](#) (1)
-

## Step 1 — Battery



- Move the latch to the right of the battery to unlock.

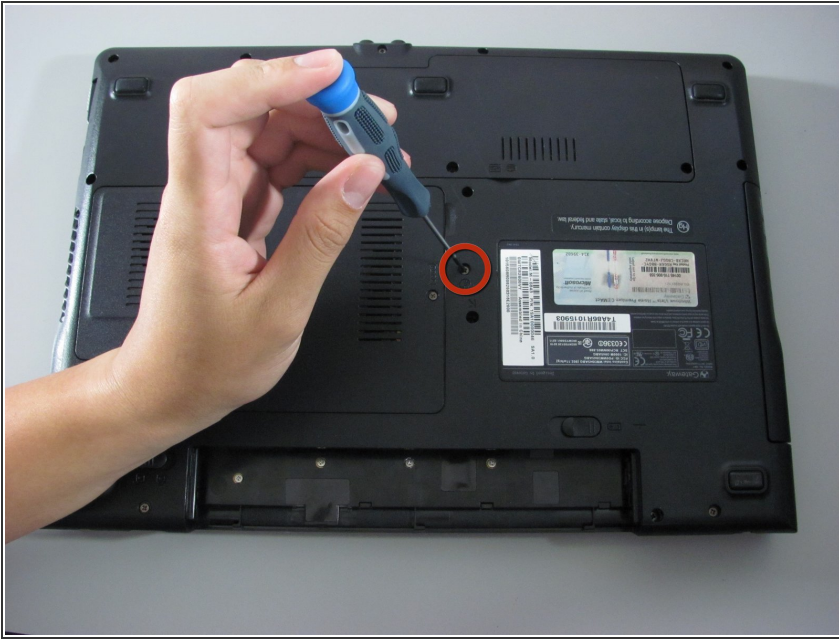
## Step 2



- Slide the latch on the left directly below the battery to unlock and pull out the battery as shown.
- ⓘ The latch must be held in position to remove the battery.

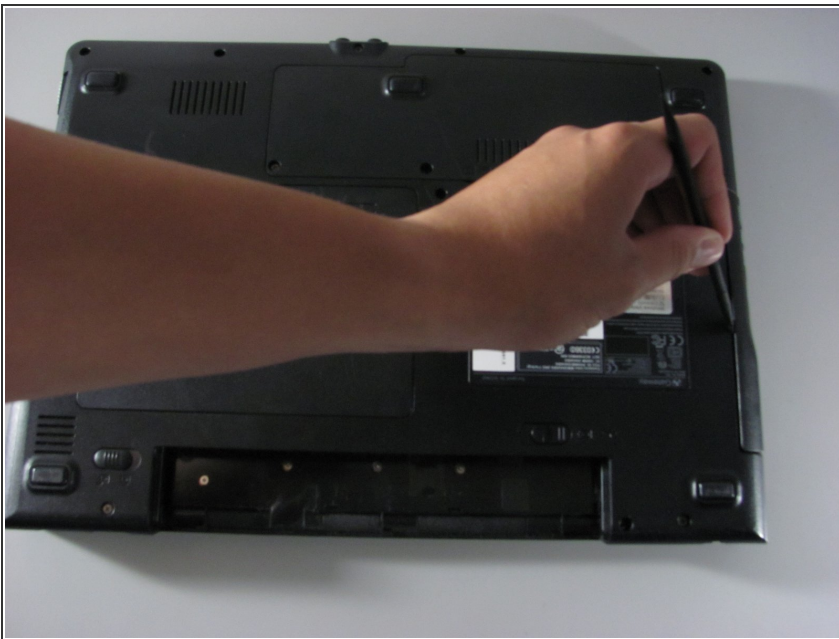


## Step 3 — Disk Drive



- Unscrew the marked 5.9 mm Philips screw.

## Step 4



- Use the spudger to pry out the Disk drive.

## Step 5



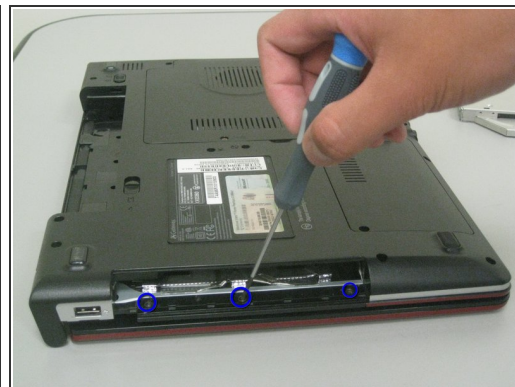
- The disk drive should easily detach and can now be replaced.

## Step 6 — Outer Casing



- Remove the twelve 5.9 mm Philips screws from the back cover.
- Remove one 8.8 mm Philips screw from the back cover.

## Step 7



- Unscrew the two 5.9 mm Philips screws located on the the side closest to the battery.
- Unscrew the three 3.6 mm Philips screws that are within the Disk drive port.

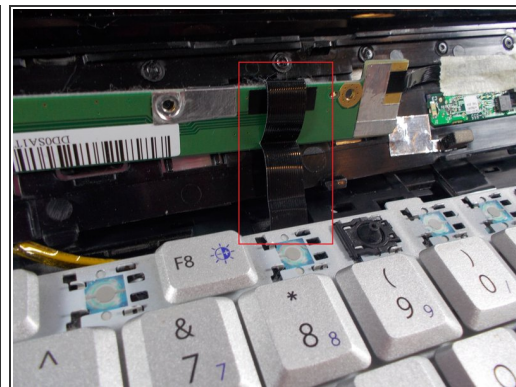
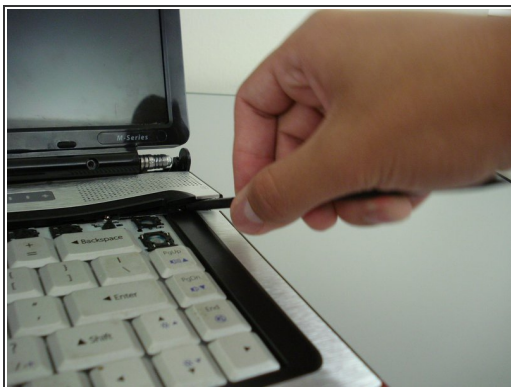
## Step 8



- Remove the hinge covers by lifting each with the sharp point of the spudger.
- ⓘ Notice that the middle cover has a different shape and is more difficult to remove.



## Step 9



⚠ There will be a connection underneath the speaker cover.

- Remove the speaker cover using the spudger.


## Step 10




- Unscrew the two 3.9 mm Philips screws and remove the keyboard.

## Step 11

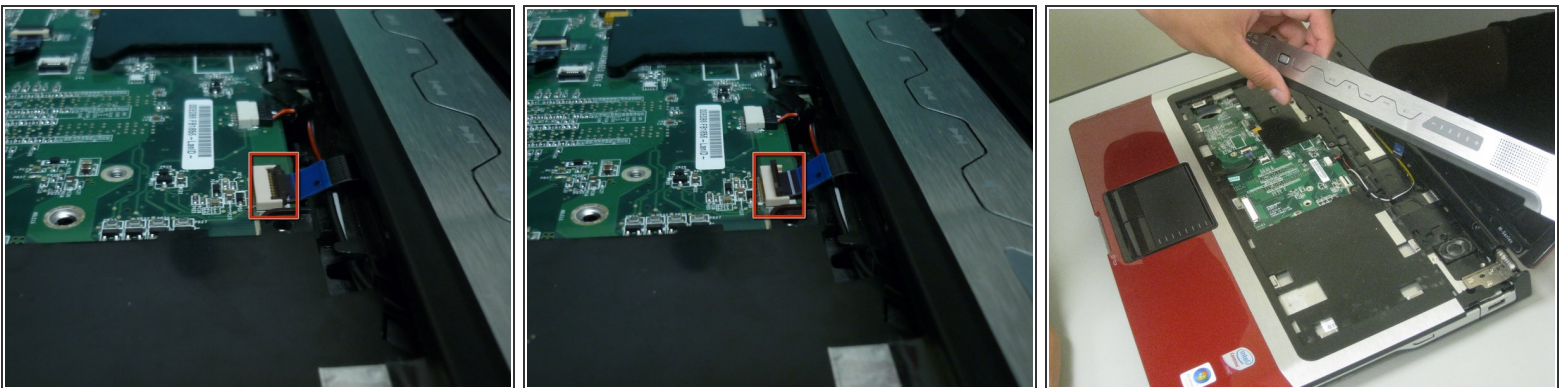


 Carefully lift the keyboard off from the laptop. It is still attached as shown.

- Using the spudger, detach the connector by pushing two tabs away from the white connector and then gently pulling the connector away.

 The brown colored component with the tabs does not come out with the connector.

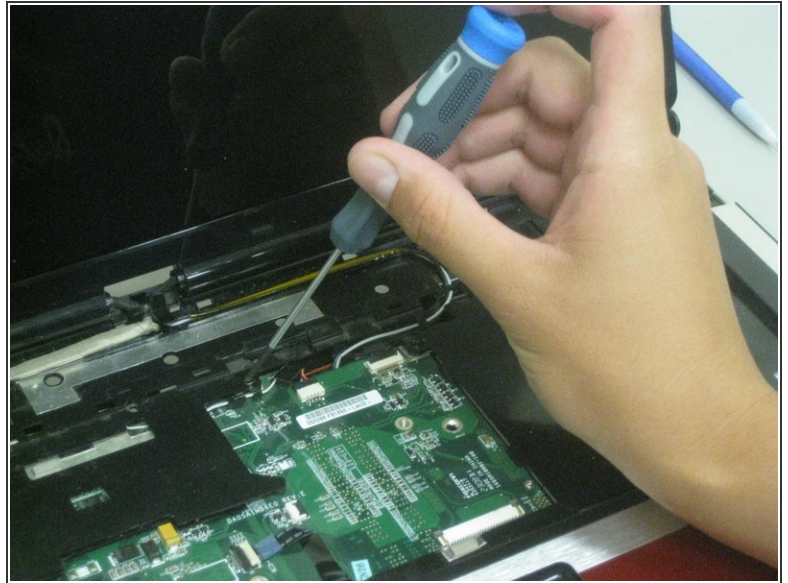
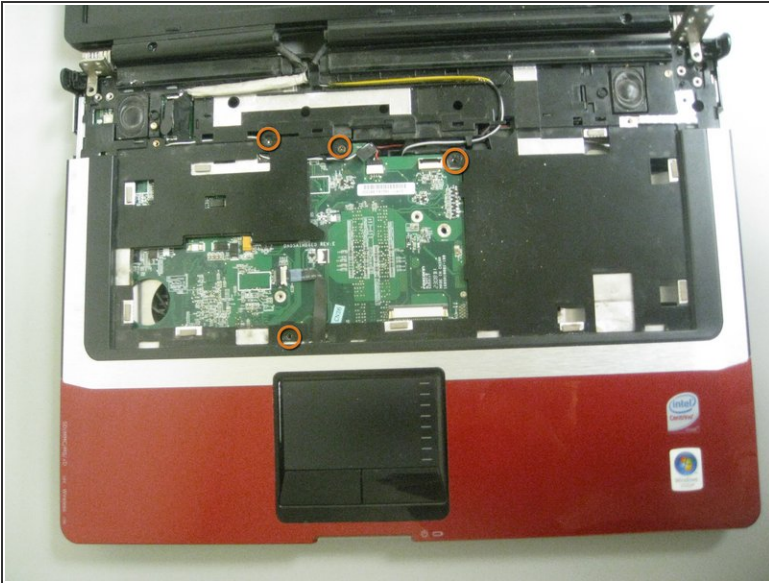
## Step 12



- Lift up the black tab and gently pull out the connector.

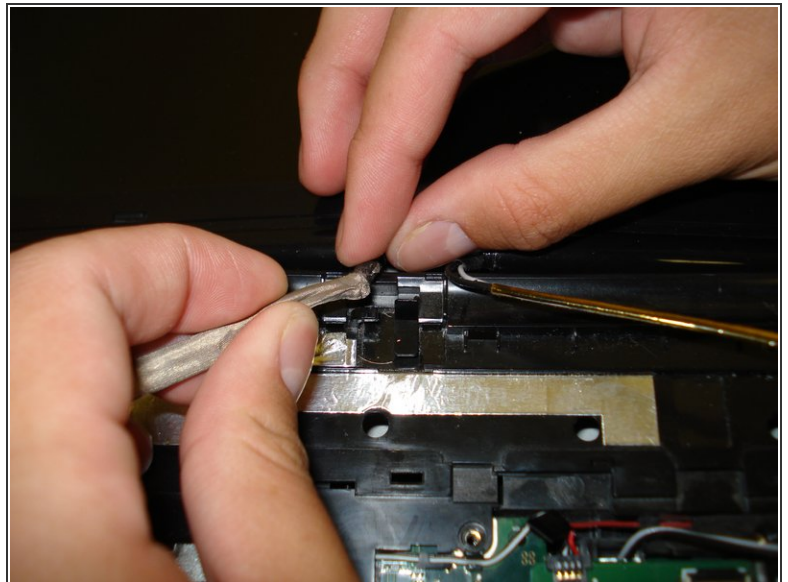
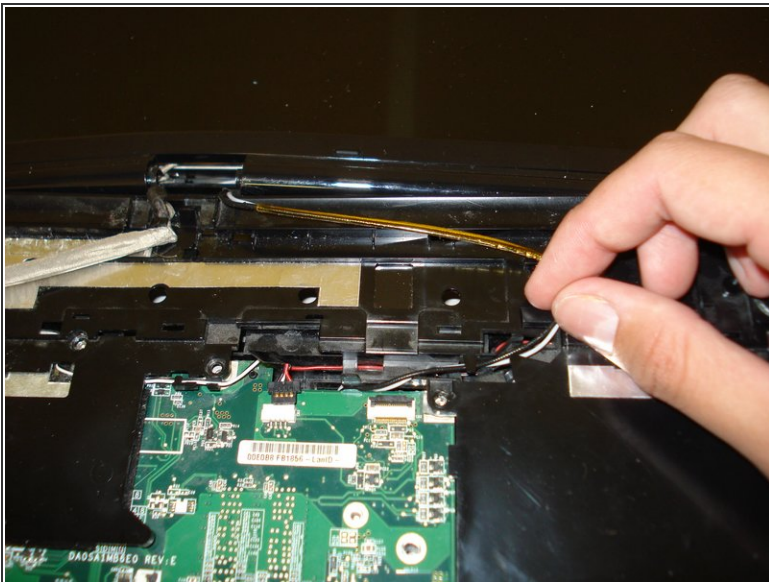


## Step 13



- Unscrew the four marked 5.9 mm Philips screws.

## Step 14



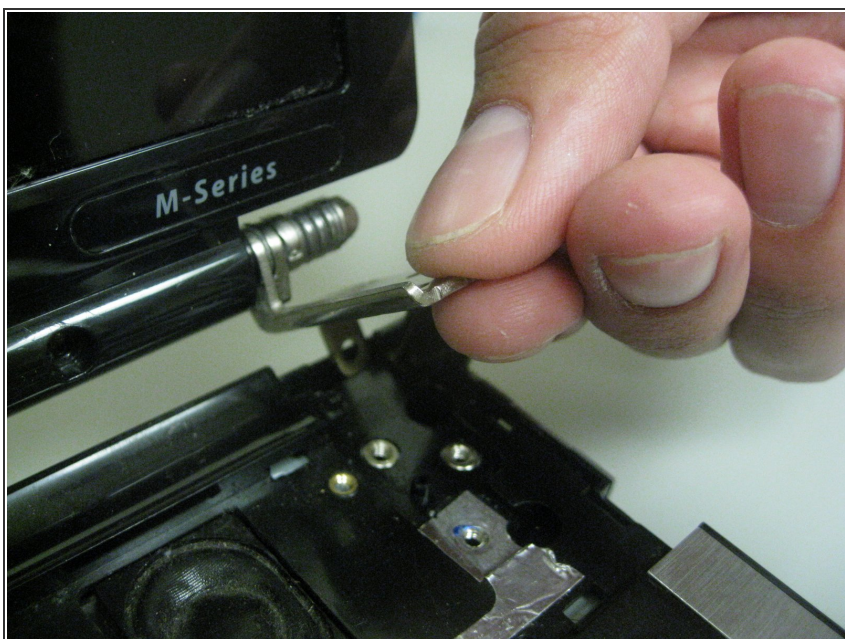
- Move the wires out of the fixed space as shown.

## Step 15



- Unscrew the five marked 3.8 mm Philips screws.
  - Three screws are located on the right side of the screen.
  - Two screws are located on the left side of the screen.

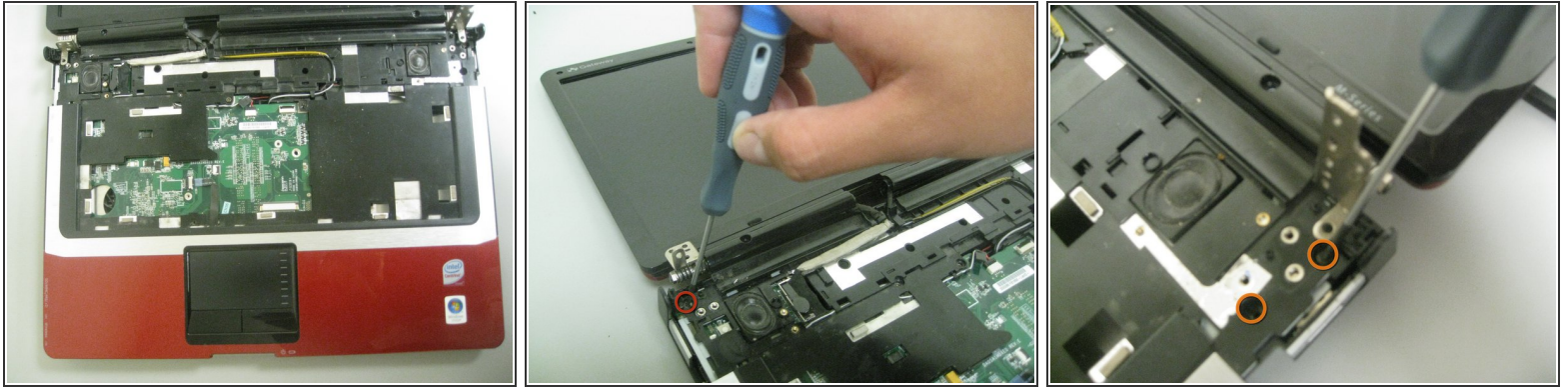
## Step 16



- Remove the screen brackets from the computer's base.

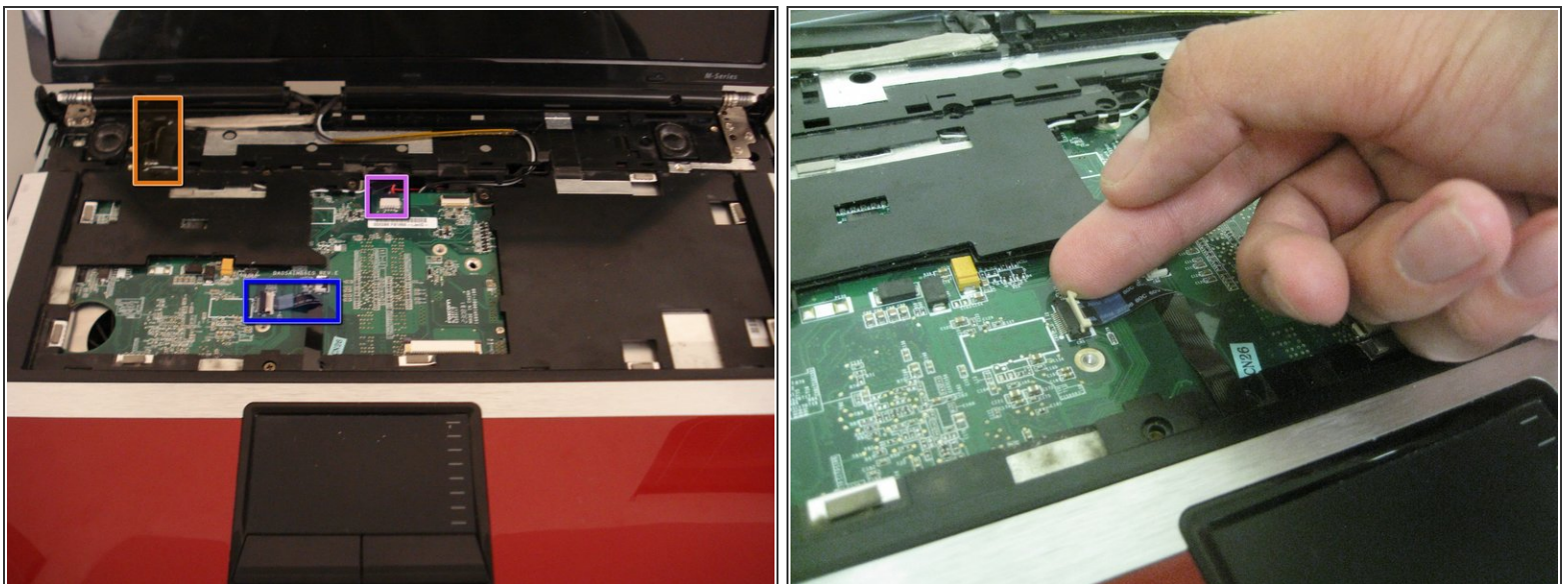


## Step 17



- Remove the four 5.9 mm Philips screws as indicated:
  - There is one somewhat hidden screw on the left side under the screen hinge, and one to the right of the (left) speaker, right/top side of the video port on mobo.
  - There are two similarly positioned screws on the right side.

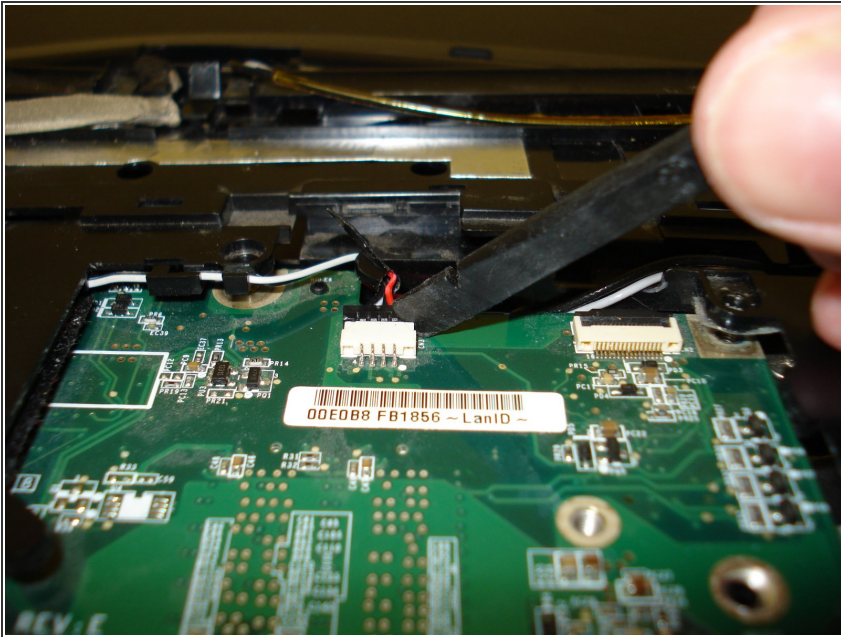
## Step 18



- The following steps (18 - 20) explain how to remove the three indicated connections.
- The order is Blue, Violet, Orange.
- Lift the white tab up and gently take out the connector.

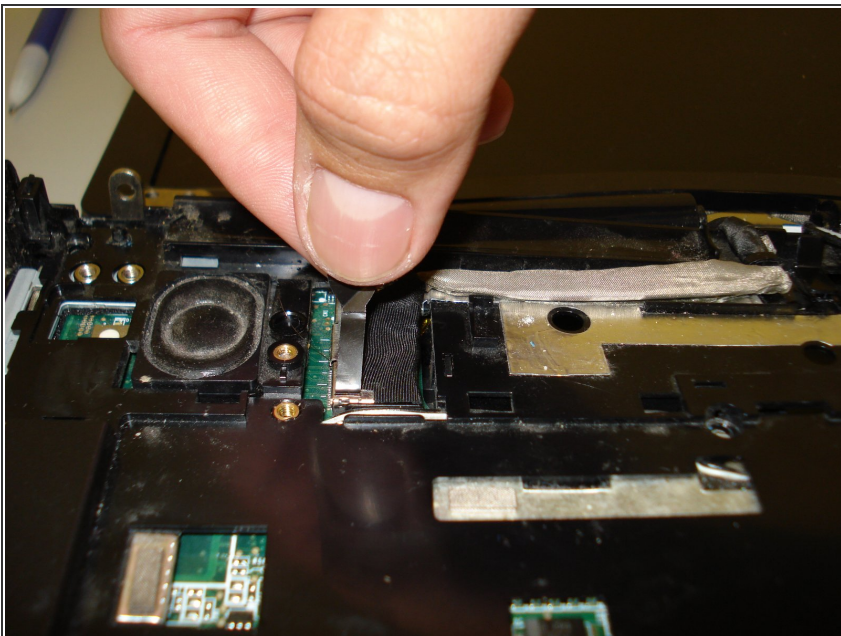


## Step 19



- Use the spudger to pull off the black attachment.

## Step 20



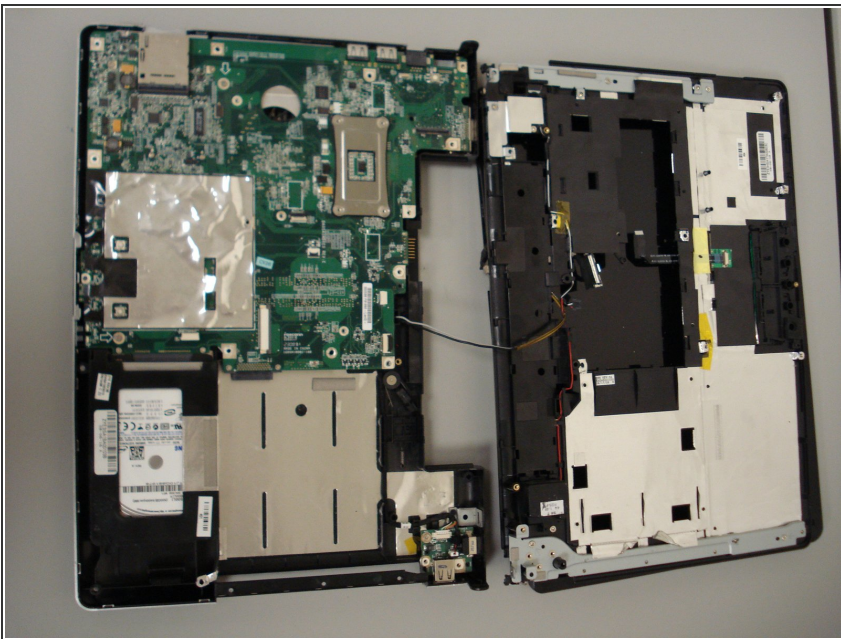
- Lift and pull the black tab upward until it becomes unattached.
- ⓘ Some force may be required.

## Step 21



- Use the spudger to remove the casing as seen in the picture.
- ⓘ Some force may be required.

## Step 22



- Remove the casing.

To reassemble your device, follow these instructions in reverse order.