



Gateway SA1 RAM Replacement

Written By: Diego Carteno



INTRODUCTION

Installing upgraded memory.



TOOLS:

- [Phillips #00 Screwdriver](#) (1)



PARTS:

- [RAM](#) (1)

Step 1 — Battery



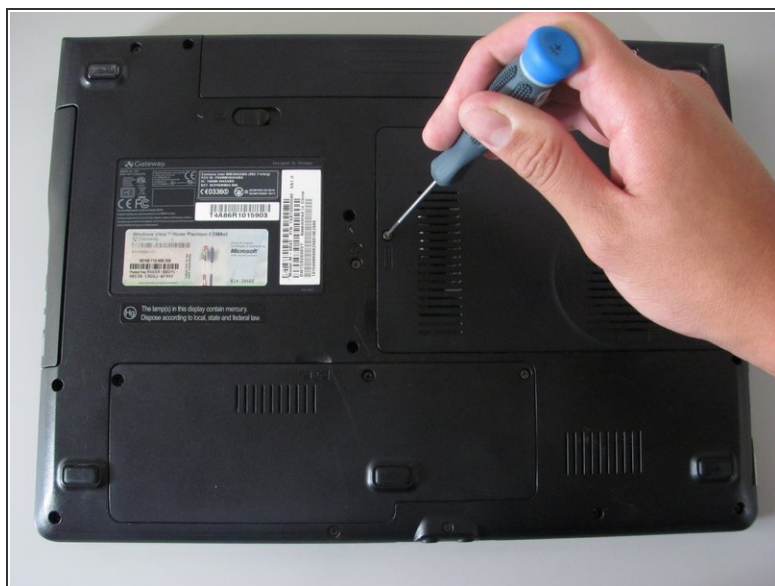
- Move the latch to the right of the battery to unlock.

Step 2



- Slide the latch on the left directly below the battery to unlock and pull out the battery as shown.
- ⓘ The latch must be held in position to remove the battery.

Step 3 — RAM



- Loosen the indicated Philips screw that connects the memory bay cover to the casing.

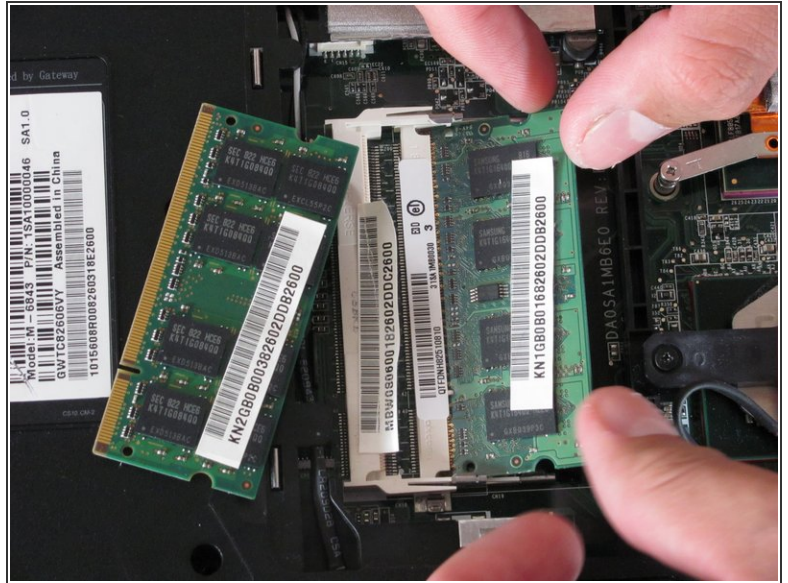
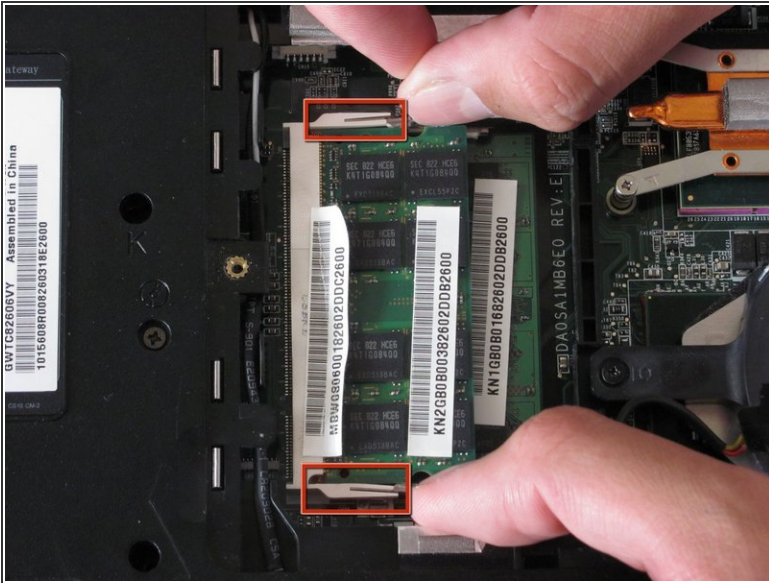
i The indicated Philips screw does not come out of the cover.

Step 4



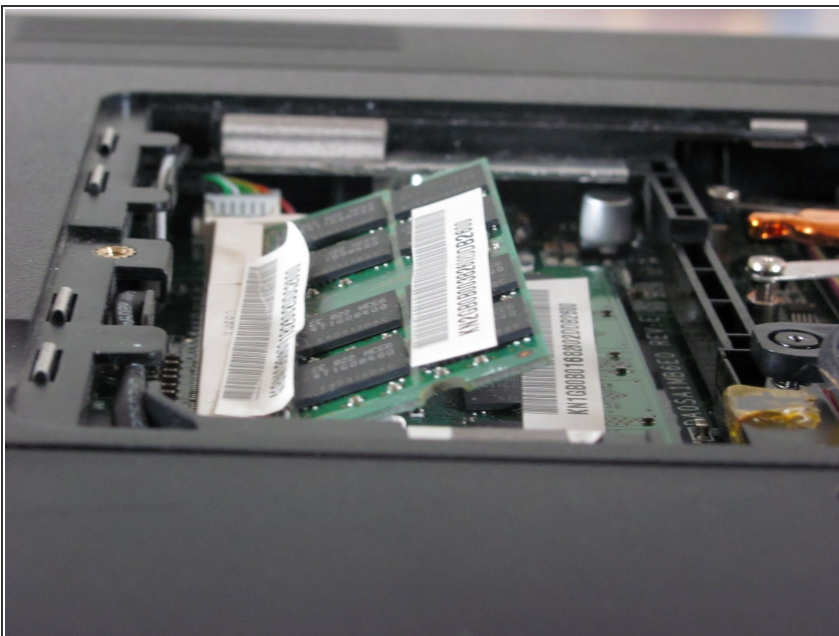
- Lift and remove the cover using the spudger.

Step 5



- Gently press the clip outwards.
 - The module will tilt up and can be pulled out of the slot.
 - There may be another memory module underneath so be sure to remove both.

Step 6



- To insert a new memory, slide the module into the slot at a 30 to 45 degree angle.
 - Place the first module into the bottom slot then the next module into the top slot.
- These slots are keyed so verify that you are sliding the module in one direction.

-
- ① Verify that the new memory modules are designed for your specific Gateway Laptop.
-

To reassemble your device, follow these instructions in reverse order.