



# Gateway SA1 Screen Replacement

Replace a broken screen in your Gateway SA1 laptop.

Written By: Diego Carteno



# INTRODUCTION

Replace a broken screen in your Gateway SA1 laptop.



## TOOLS:

- [Phillips #00 Screwdriver](#) (1)
- [Phillips #1 Screwdriver](#) (1)
- [Spudger](#) (1)



## PARTS:

- [Gateway M Series 15.4 inch 1260 x 800 Glossy Laptop LCD Screen](#) (1)

## Step 1 — Battery



- Move the latch to the right of the battery to unlock.

## Step 2



- Slide the latch on the left directly below the battery to unlock and pull out the battery as shown.
- ⓘ The latch must be held in position to remove the battery.

## Step 3 — Screen



- Remove the hinge covers by lifting each with the sharp point of the spudger.
- ⓘ Notice that the middle cover has a different shape and is more difficult to remove.

## Step 4



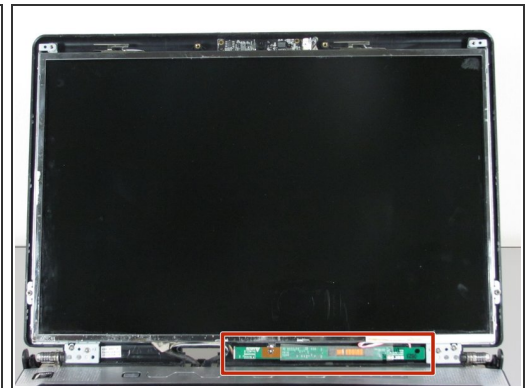
- Remove the six screw covers on the front bezel with the sharp point of the spudger.
- ⓘ The bottom two are more difficult to remove.

## Step 5



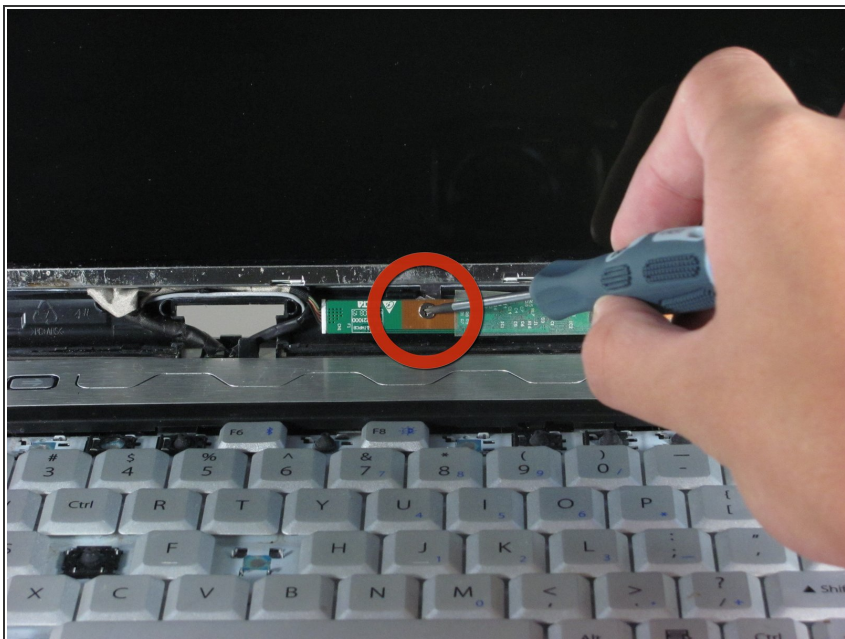
- Remove the six 5.9 mm Philips screws securing the screen bezel.

## Step 6



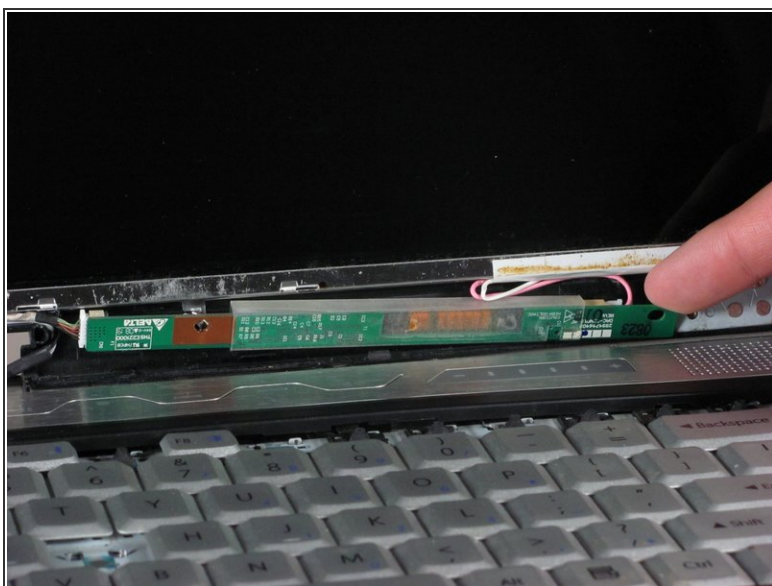
- Remove the front bezel by prying it off with the wedged end of the spudger.
- ⓘ Verify that your spudger does not touch the LCD.
  - The screen inverter is now exposed below the LCD.

## Step 7



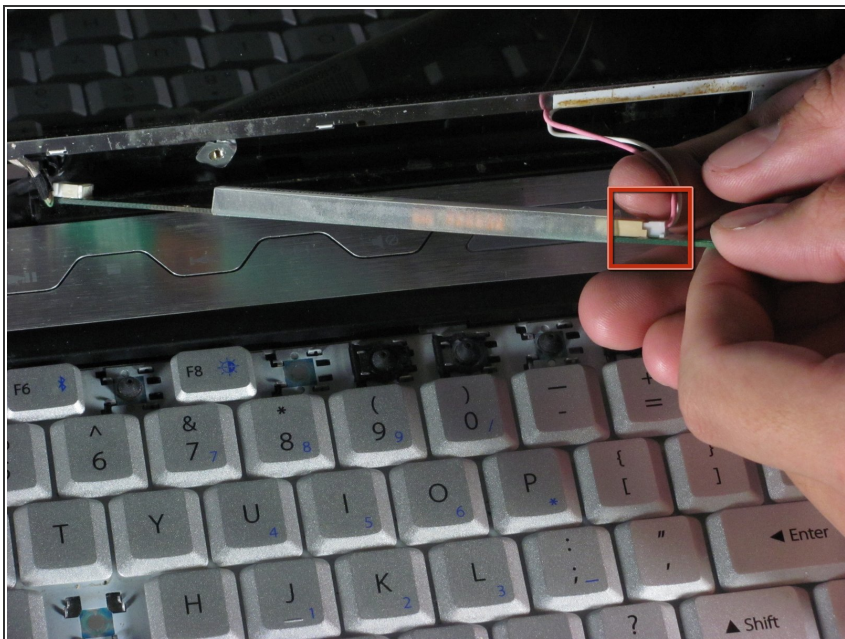
- Remove the single 3.8mm Phillips screw mounting the screen inverter to the computer.

## Step 8



- Use your finger, or the spudger, to pry the inverter board out.
  - ⓘ This exposes the wires behind it.

## Step 9



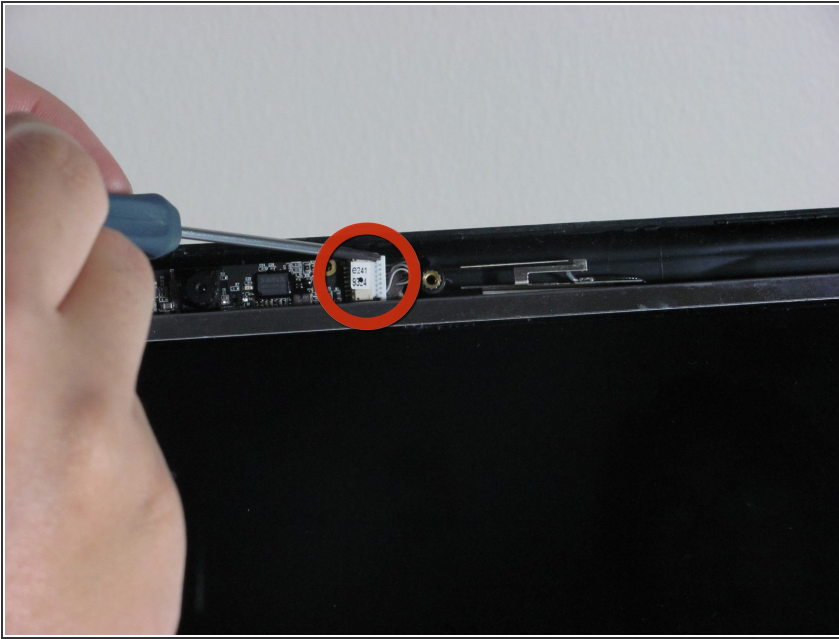
- Unplug the LCD back light cables from the right side of the screen inverter.

## Step 10



- Remove the six screws that mount the screen to the hinge mounts.
  - Two 2.5 mm Phillips screws.
  - Four 3.8 mm Phillips screws.

## Step 11



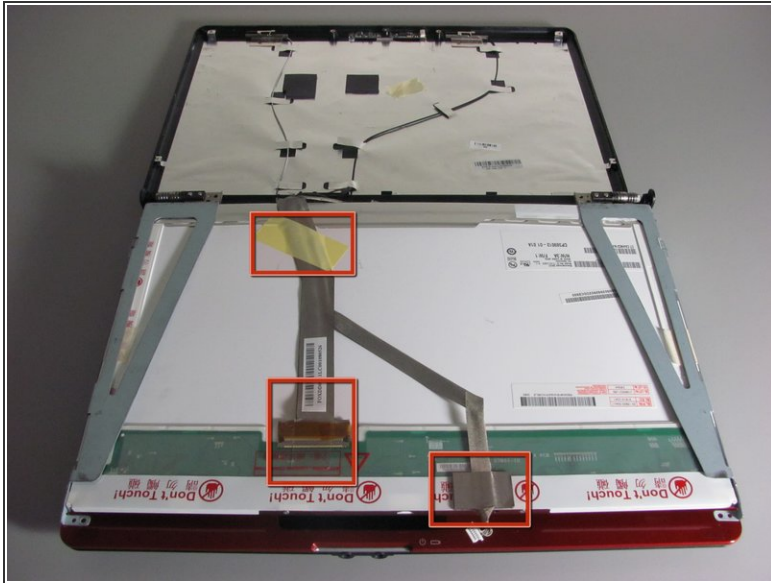
- Unplug the cable from the webcam board.
- ⚠ Be gentle, do not use excessive force or you may break the connection.

## Step 12



- Separate the screen from the display cover.
- ⚠ Do not touch the back of the screen.

## Step 13



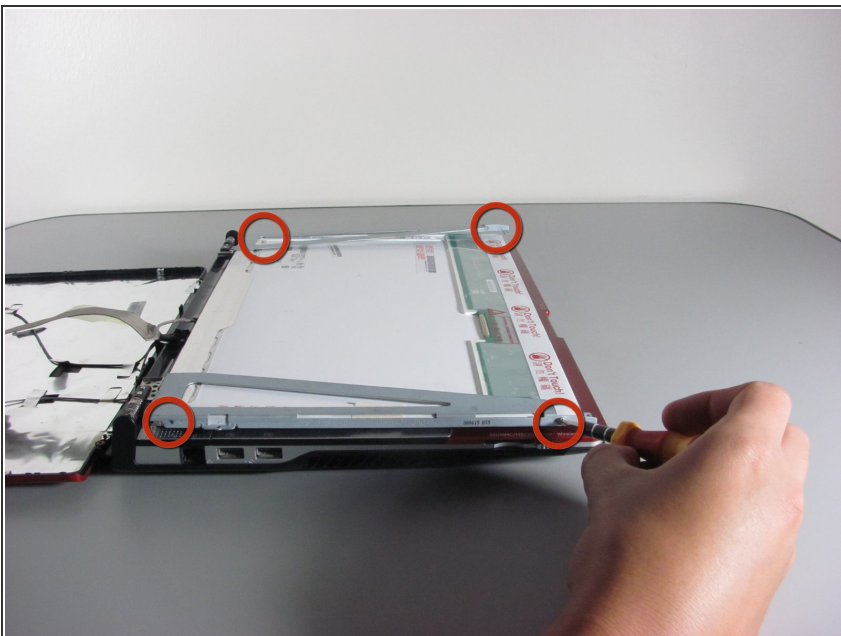
- Remove the three tape strips that hold down the cables.
- ⚠ Be careful not to tear any of the tape. The piece holding down the webcam wires is especially delicate.

## Step 14



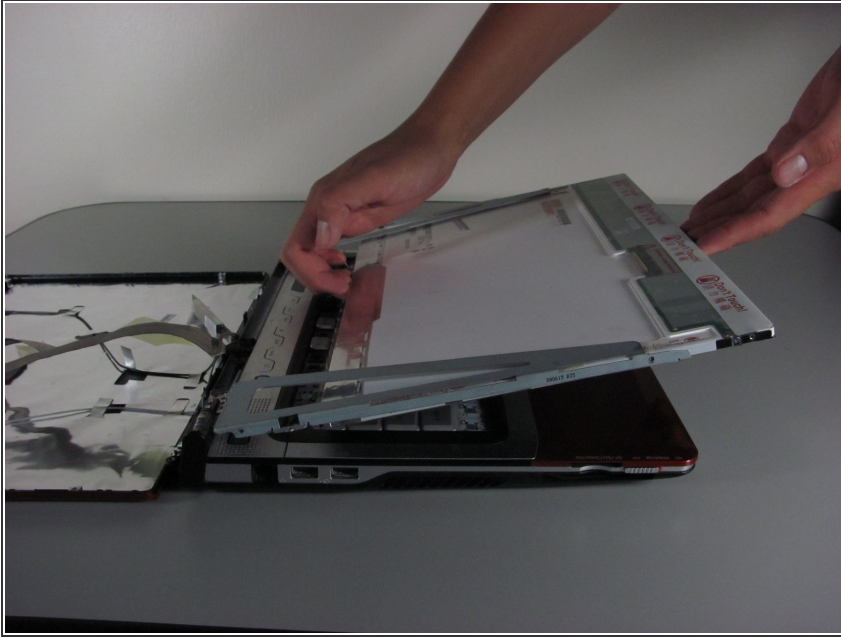
- Unplug the display data cable from the screen connector.
  - ⚠ This connection is very fragile; do not use excessive force.
  - ℹ The screen should now be free from all wire connections.

## Step 15



- Remove the four 2.8 mm Phillips screws that secure the screen to the mounting bracket using a screwdriver.
  - ℹ There will be two screws on either side of the mounting bracket.

## Step 16



- You can now remove and replace the screen.

To reassemble your device, follow these instructions in reverse order.