



# Gateway Solo 1200 RAM Replacement

If you need to replace faulty RAM or upgrade your Gateway Solo 1200's memory, follow this guide.

Written By: Addison



## INTRODUCTION

Follow this replacement guide to replace or upgrade your RAM stick.

Adding memory is one of the easiest ways to boost your Gateway Solo 1200's performance. To find how much RAM your computer has, go to the device specifications in your PC's settings. This will not only tell you how much RAM your computer has but also how much RAM it can support for possible upgrades.



### TOOLS:

- [Phillips #0 Screwdriver](#) (1)

## Step 1 — Battery

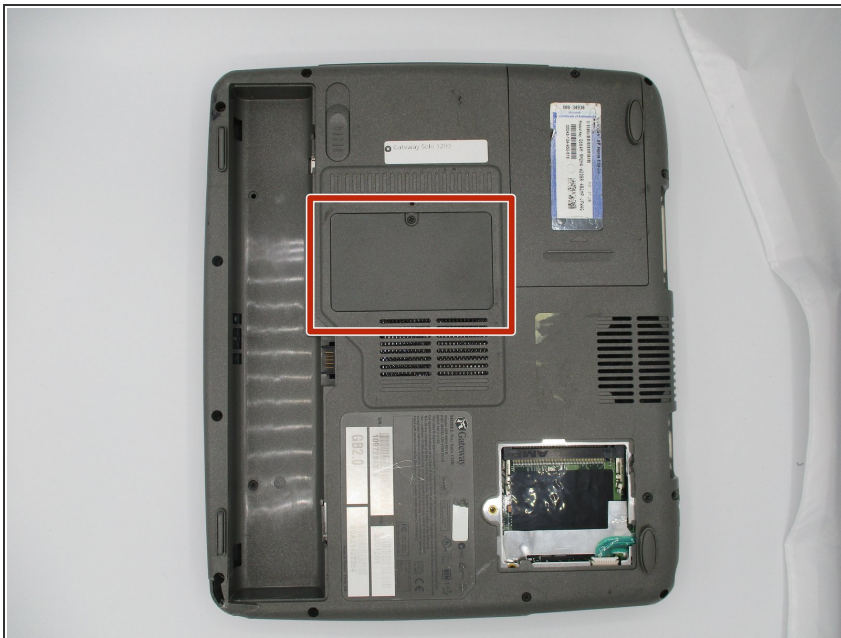


⚠ Turn off your laptop and disconnect it from AC Adapter before use.

- Locate the battery latch on the bottom of the laptop.
- Release the latch by pressing it with your thumb and sliding it to the right.
- Slide the battery out of its compartment.

⚠ Discharge your laptop by pushing the power button after removing the battery.

## Step 2 — RAM



- Locate the RAM compartment on the underside of the laptop near the center.

### Step 3



- Open the RAM compartment by unscrewing the 2 mm screw with a Phillips #0 screwdriver.
- Once unscrewed, lift off the compartment cover.

### Step 4



- Press the silver retention levers on either side of the RAM away from the center of the RAM.
- The RAM stick will pop up after the retention levers are released.

## Step 5



- Pull the RAM stick out of its socket.

To reassemble your device, follow these instructions in reverse order.