



# Gateway Solo 1200 Keyboard and Frame Replacement

Use this guide to remove and replace the keyboard and keyboard frame in the Gateway Solo 1200.

Written By: Riki



## INTRODUCTION

To replace a faulty keyboard and damaged frame follow this replacement guide.

A functioning keyboard is imperative to any laptop. The keyboard frame, by extension, ensures that the keyboard and trackpad remain safe. If your keys are sticking or if you notice a lag on your mouse, this could be due to debris under the keyboard panel and frame.




### TOOLS:


- [Phillips #0 Screwdriver](#) (1)
-

## Step 1 — Battery



 Turn off your laptop and disconnect it from AC Adapter before use.

- Locate the battery latch on the bottom of the laptop.
- Release the latch by pressing it with your thumb and sliding it to the right.
- Slide the battery out of its compartment.

 Discharge your laptop by pushing the power button after removing the battery.

## Step 2 — Keyboard and Frame



- Turn the device so the back is facing you.
- Unscrew the 2 mm screws with a Phillips #0 screwdriver.
- ⓘ Unscrewing these back screws partially releases the keyboard.

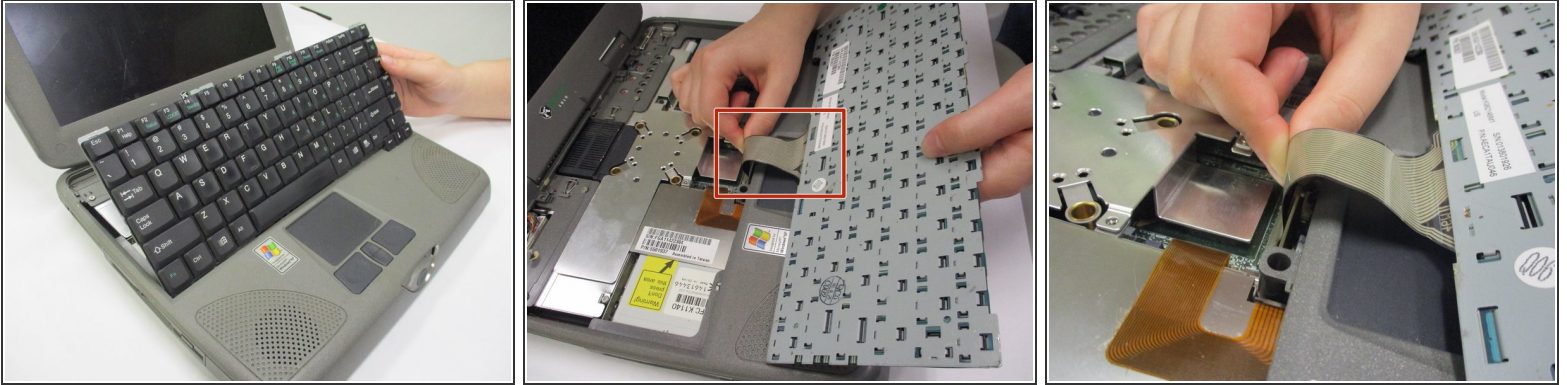


## Step 3



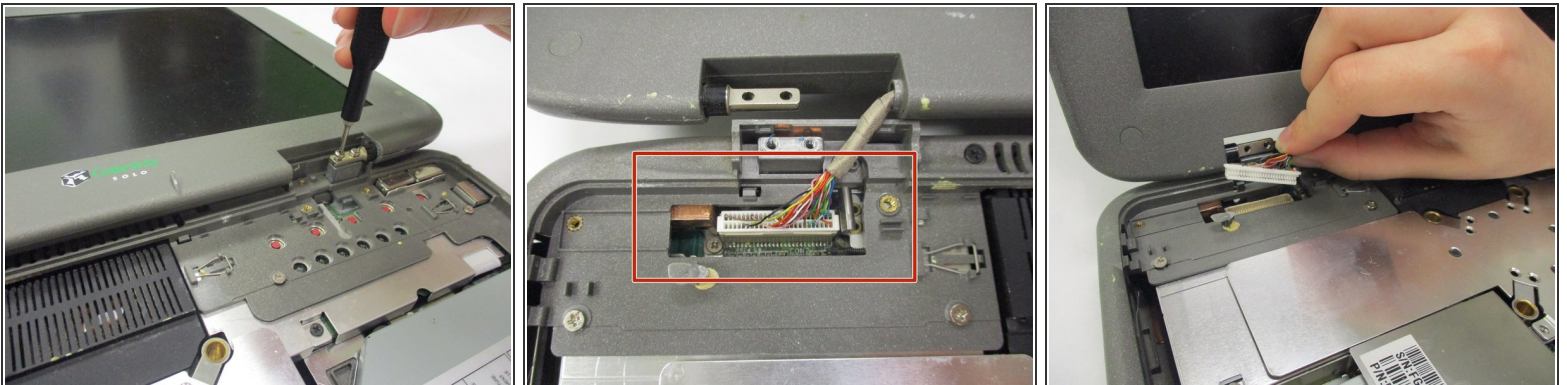
- Open up the device so the keyboard is visible.
- Locate the front panel with the power button above the keyboard.
- Remove the panel by gently pulling on it.
- ⓘ The panel should pop out with little force.

## Step 4



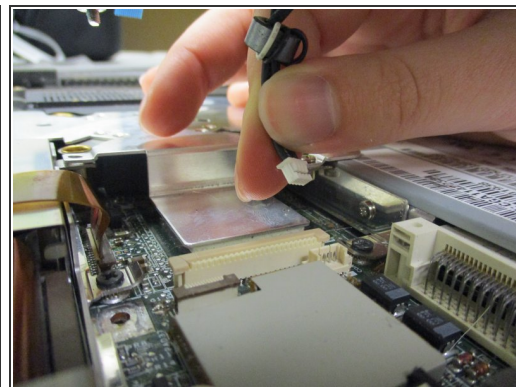
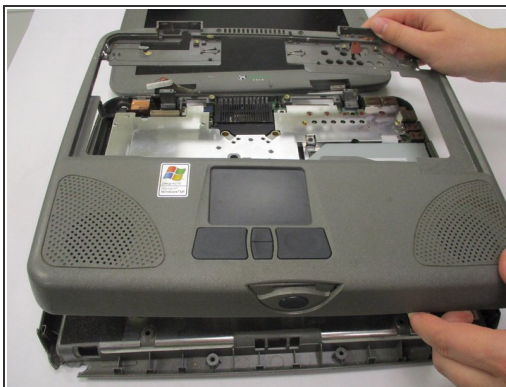
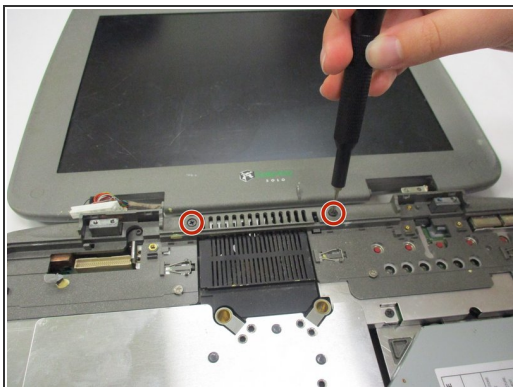
- Gently lift the keyboard panel up.
- Flip the keyboard panel over to reveal the underside.
- Gently tug on the ribbon cable at the bottom of the keyboard panel to release the keyboard.

## Step 5



- Remove both monitor hinge covers at the base of the screen by unscrewing the 2 mm screws with a Phillips #0 screwdriver.
- Locate the visual output cord on the exposed left hinge connecting the monitor to the laptop.
- Gently tug on the visual output cord to remove the screen.

## Step 6



- Once the screen is removed, locate the keyboard frame screws.
- Unscrew the outer frame and gently pull it away from the device.
- Gently tug on the trackpad connector underneath the keyboard frame to completely remove it.

To reassemble your device, follow these instructions in reverse order.