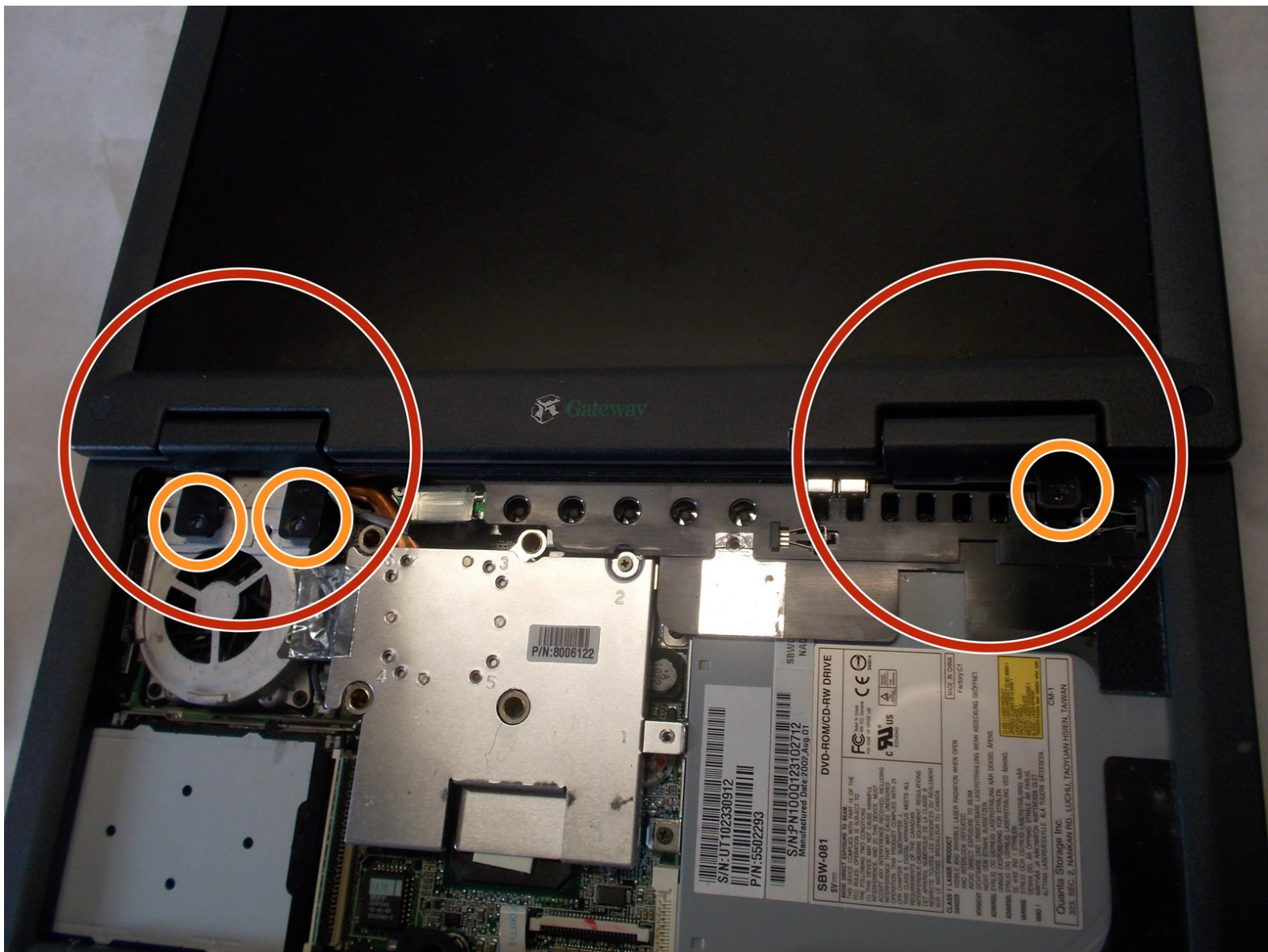




Gateway Solo 1450 Screen Replacement

This guide will assist the user through the process over replacing the screen on the Gateway Solo 1450 laptop.

Written By: Zachary Perry



INTRODUCTION

In this guide, we will guide you through the process of how to successfully remove and replace the Gateway 1450 Solo's screen.



TOOLS:

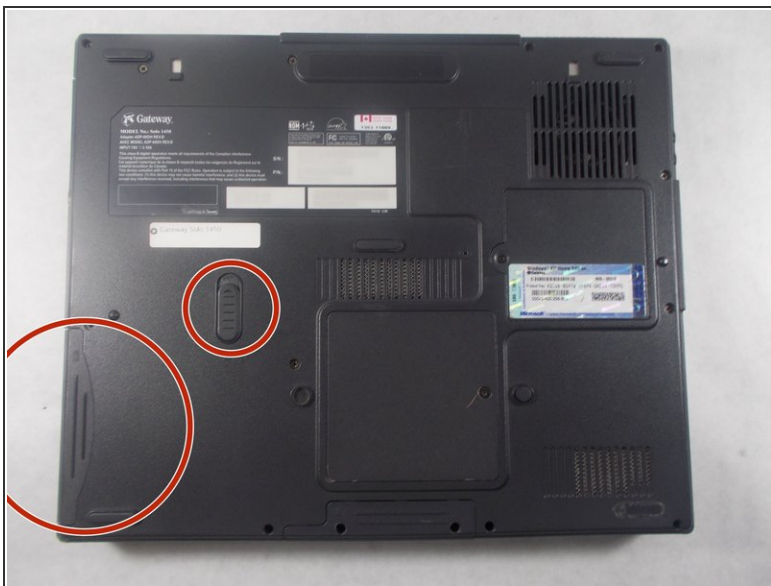
- [Phillips #0 Screwdriver](#) (1)
 - [Spudger](#) (1)
-

Step 1 — Battery



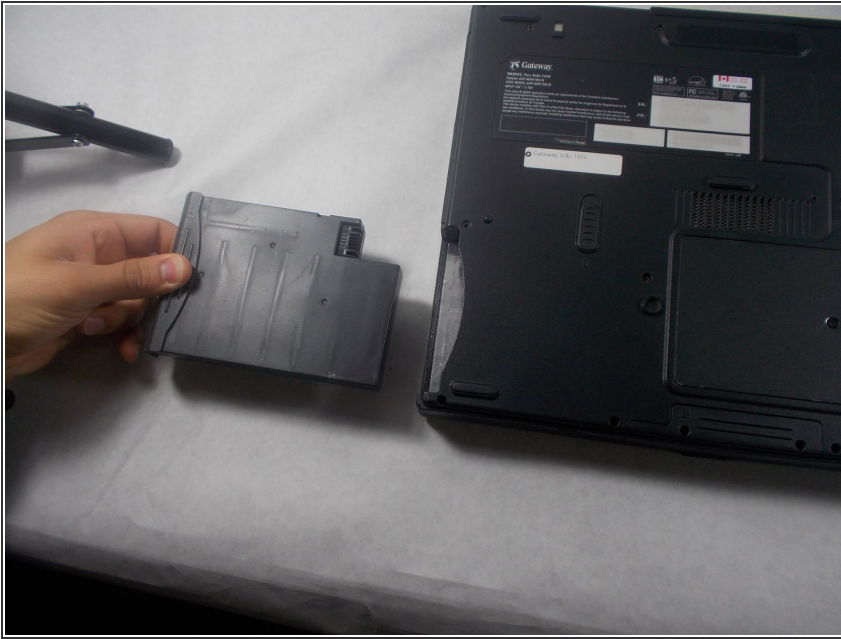
- ⚠ Make sure the device is powered down and disconnected from any power sources. Doing this will eliminate any electrical hazards while working on the device.
- First it is necessary to locate the battery release button. With the laptop orientated so that the screen hinges are facing up the button is located about halfway up the laptop and slightly to the left.

Step 2



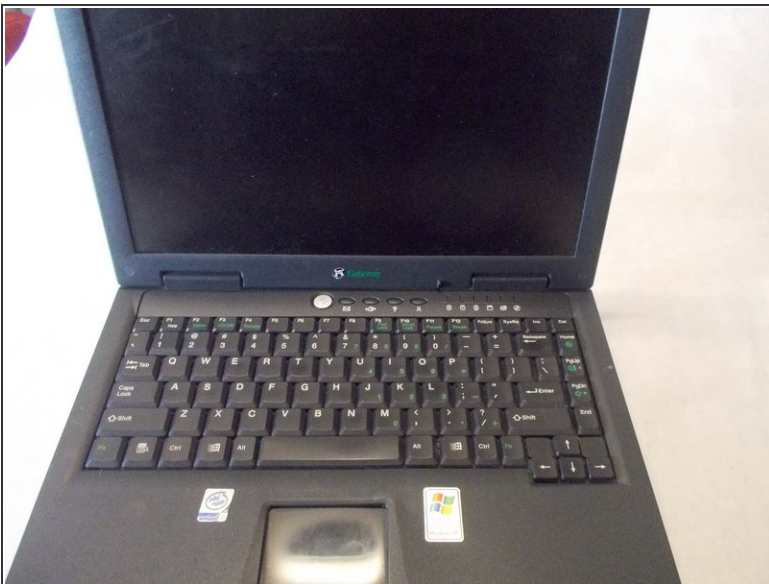
- The next step is to simultaneously push up on the battery release button and to pull out on the battery itself. If this is not done simultaneously then the battery will not budge.


Step 3



- To fully free the battery it is necessary to firmly grasp the battery and give it a firm tug.

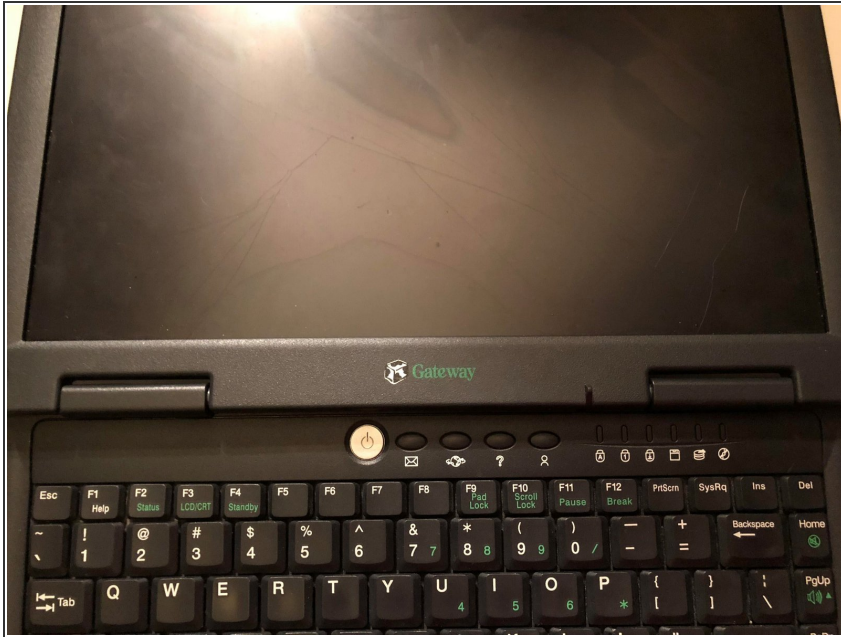
Step 4 — Keyboard



 Make sure the device is powered down and disconnected from any power sources. Doing this will eliminate any electrical hazards while working on the device.

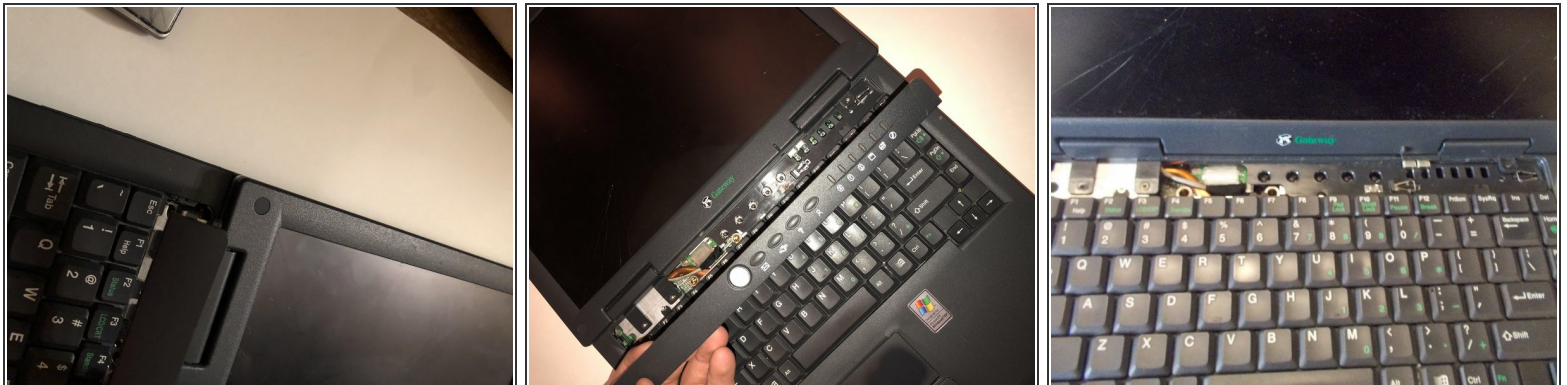
- Orient the laptop open to see the keyboard. Have the screen tilted all of the way back for easier access as shown.

Step 5



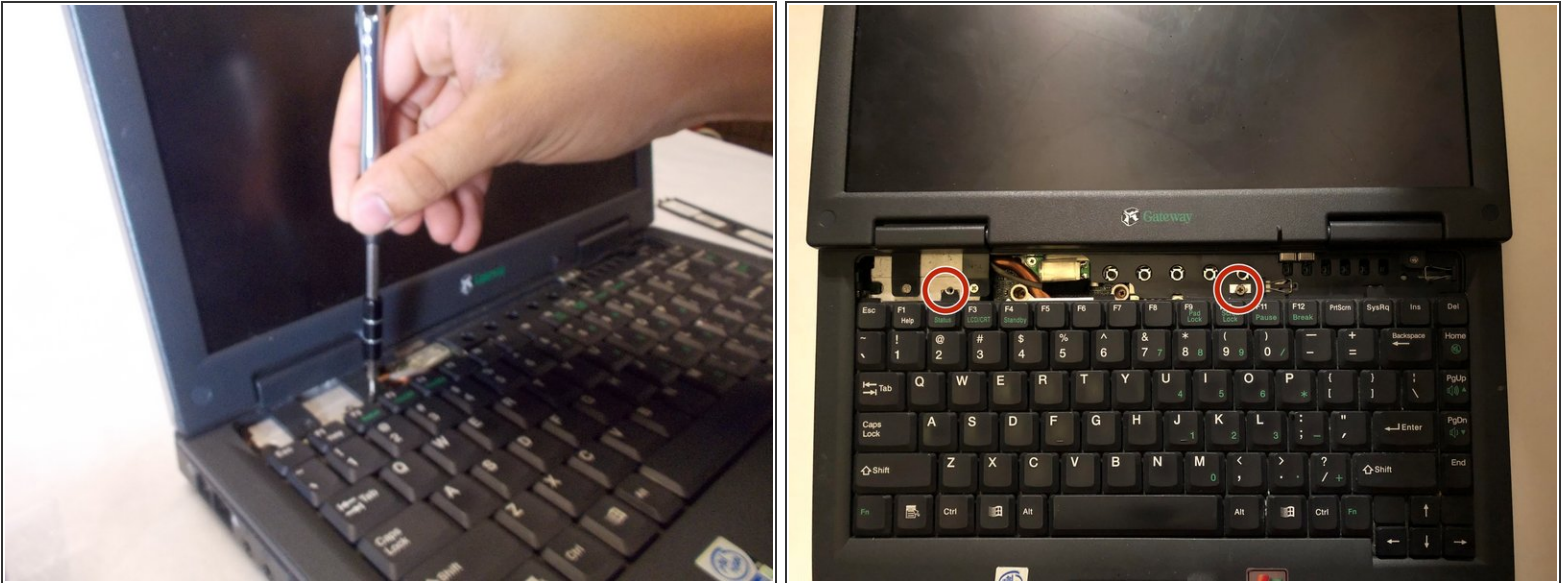
- Above the keyboard, locate the plastic part containing the power button along with various other command buttons. This needs to come off before you can access the keyboard.
- Use the spudger to assist in this step. Using the spudger, wedge it underneath the component.
- Once spudger is inserted and pulled far enough, grasp it and firmly, but carefully, pull it out from the left side first

Step 6



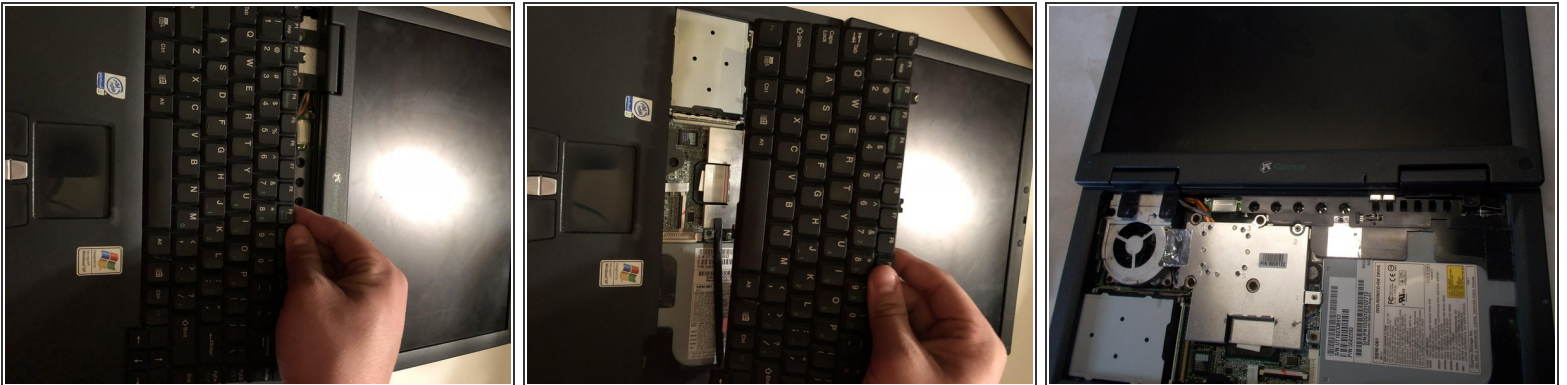
- Once unattached from left side, proceed to right side of component and remove it from clips it is attached to.
- Once removed from clamps, the part is now removed to provide access to the keyboard.

Step 7



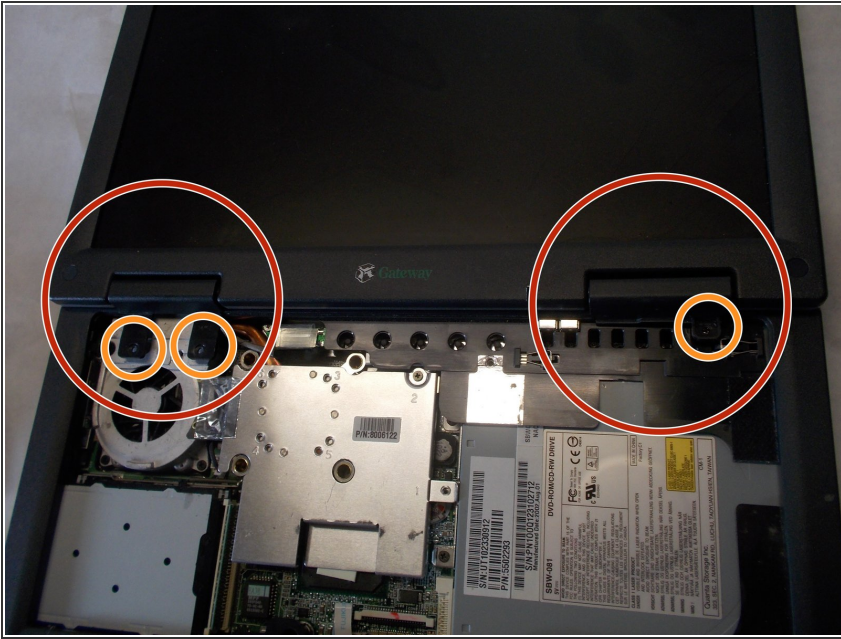
- The two J0 screws have now become visible. Using the Phillips J0 screwdriver, remove screws. The screws are 5mm long J0 Philips screws.

Step 8



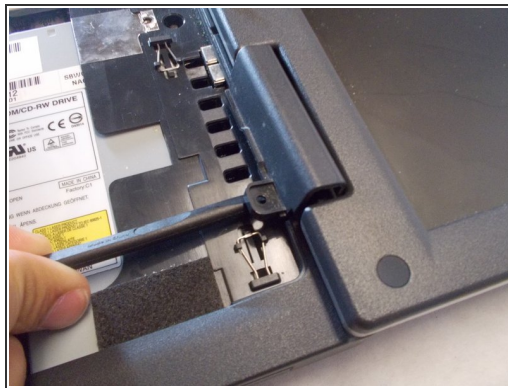
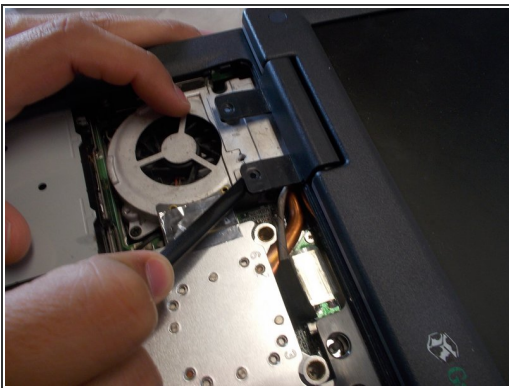
- Once screws are removed, firmly grasp the top edge of the keyboard and wiggle it slightly while firmly tugging on it. This will release the clips holding it.
- Once clips become unattached, the keyboard is now out.

Step 9 — Screen



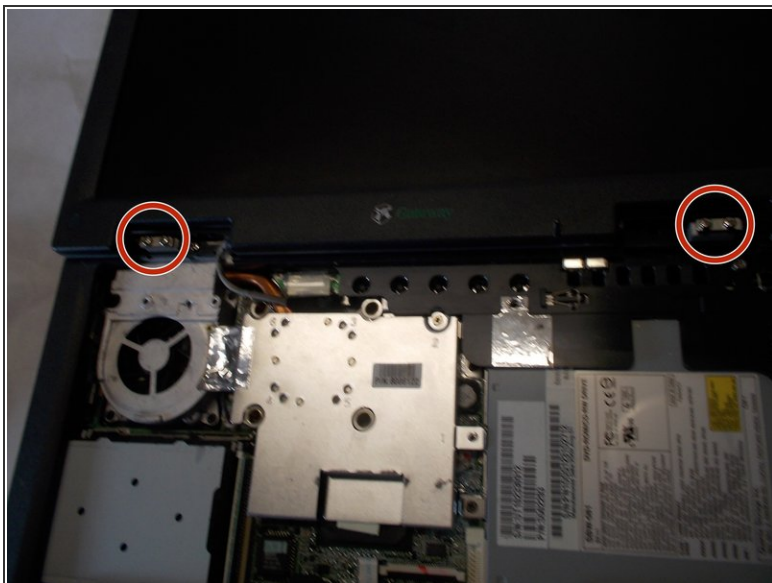
- Locate the 2 hinge protectors covering the laptop's hinges.
- If not already done while you removed the keyboard, unscrew the screws holding the hinge protectors in place.

Step 10



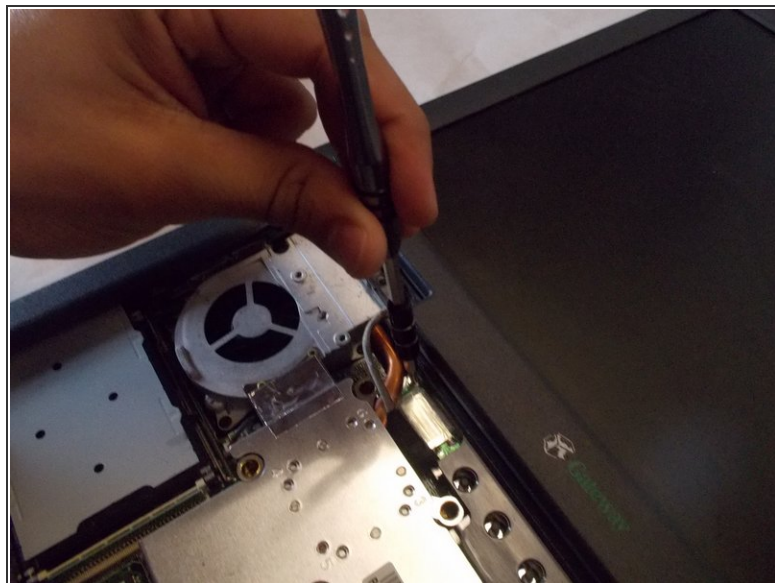
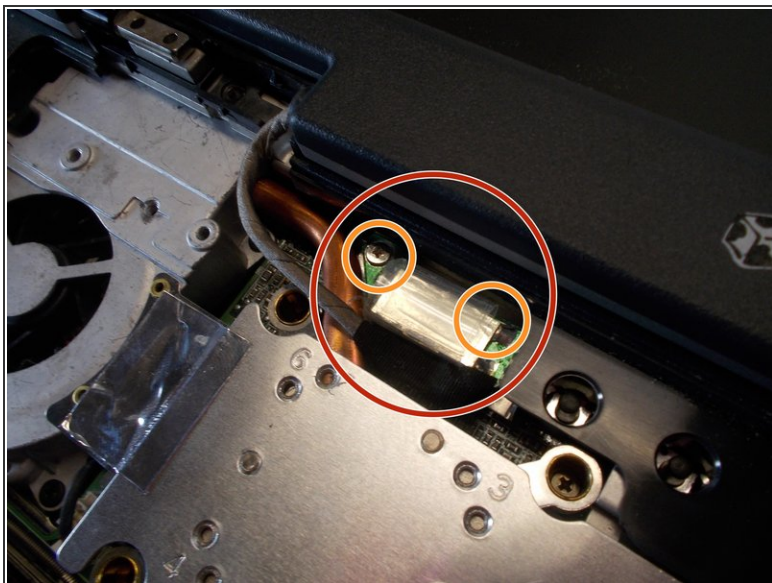
- Spudger the hinge protectors from the hinges.
- Remove the hinge protectors from the hinges.

Step 11



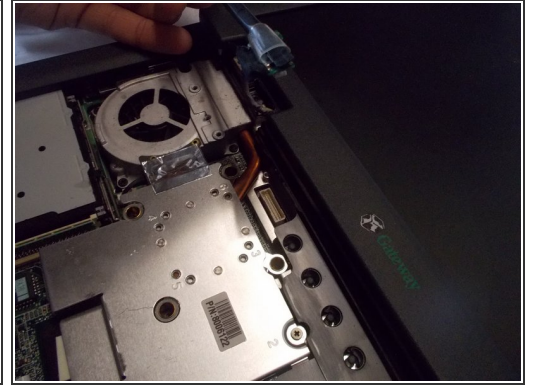
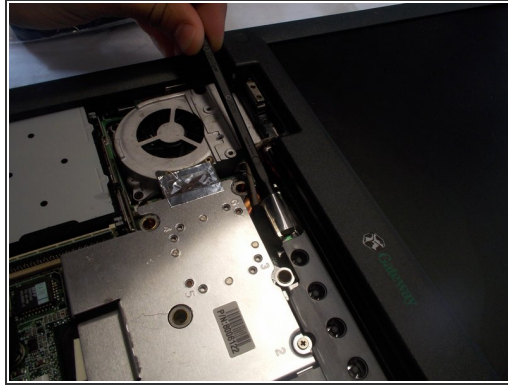
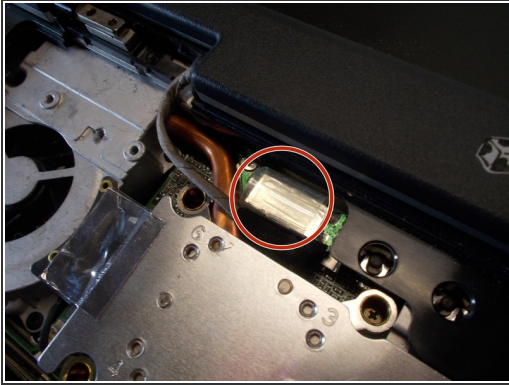
- Locate the 2 pairs of screws that are on each hinge.
- Unscrew the screws connecting the screen with the hinges.

Step 12



- Locate where the screen is connected to the laptop's interior.
- Locate the 2 screws fixing this connection into place.
- Unscrew the screws holding the connection between the screen and the laptop's interior in place.

Step 13



- Locate the small piece of plastic above the connection between the screen and the laptop's interior.
- Carefully insert a spudger into this piece of plastic and separate the connection from the laptop's interior.
- Remove the connection from the laptop's interior.

Step 14



- Separate the laptop's screen from the rest of the laptop.

To reassemble your device, follow these instructions in reverse order.

This document was generated on 2019-10-20 05:41:16 PM (MST).

