



# Gateway W350I Display Replacement

If you have a broken display, use this step-by-step guide to explain how to replace the LCD screen in your Gateway W350I laptop.

Written By: Samuel Newton



## INTRODUCTION

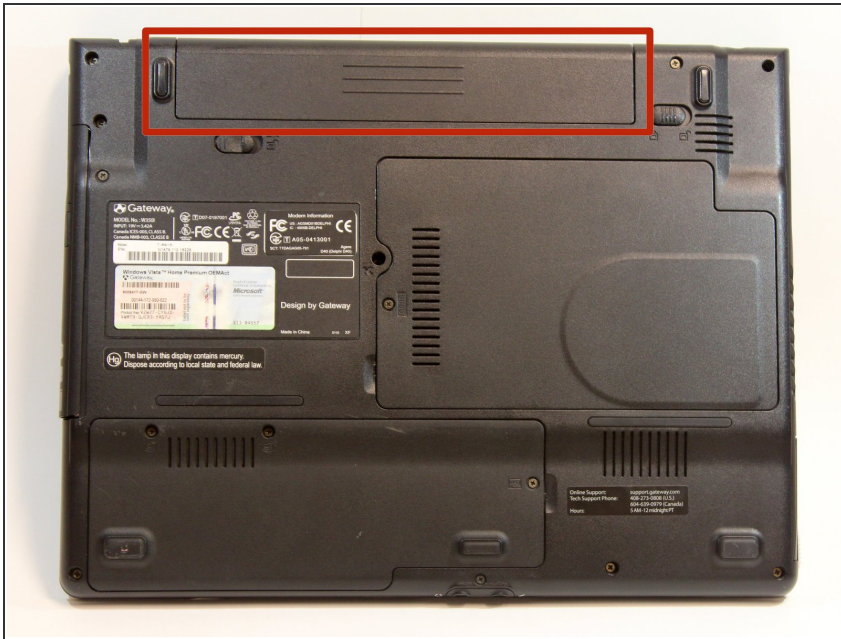
This repair will be needed in circumstances where the screen on your laptop stops working properly. If software adjustments do not fix the issue, replacing the display with a new screen should correct the display issue.



### TOOLS:

- [iFixit Opening Tools](#) (1)
  - [Phillips #0 Screwdriver](#) (1)
  - [Tweezers](#) (1)
-

## Step 1 — Battery Access



- Turn the laptop upside down and position it as shown in the image.

## Step 2 — Unlocking the Battery



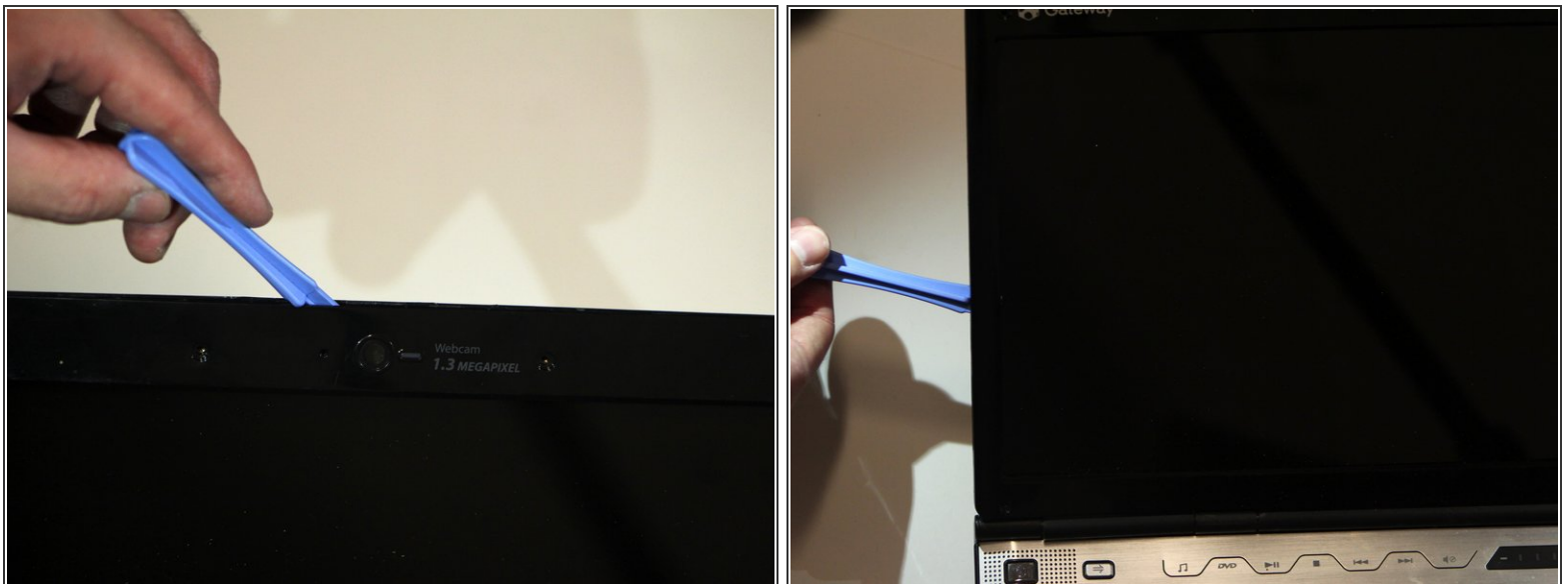
- Slide the locking switch towards the open lock picture.
- Hold the release switch in the unlocked position while simultaneously pushing the battery away from the laptop.
- Once the laptop is disengaged, completely remove the battery from the laptop.

### Step 3 — Remove Rubber Protectors & Screws



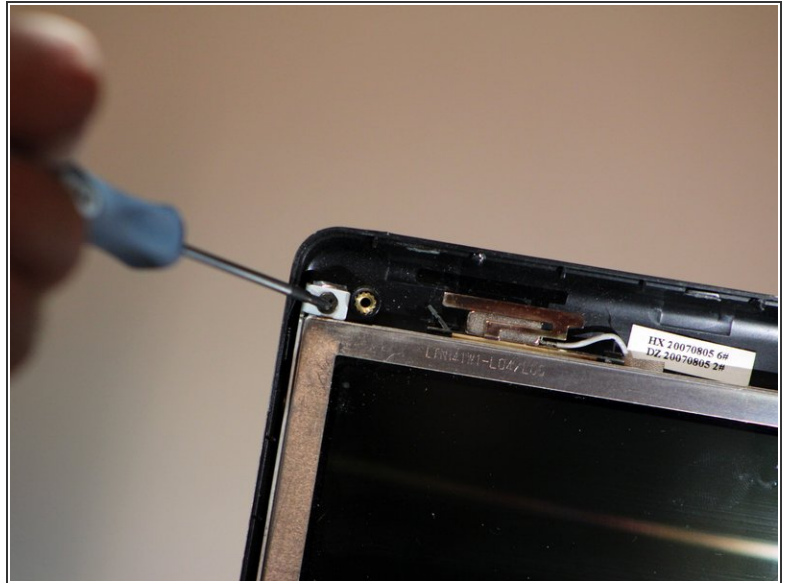
- Pry the six black rubber protectors out of the screw holes.
- Remove all six of the 4mm Phillips #0 screws that were covered by the rubber protectors.

### Step 4 — Separate Plastic Casing



- Separate the plastic screen casing from the laptop lid by inserting a plastic opening tool. Complete this step around the top and along both sides of the screen.

## Step 5 — Remove Bracket from Laptop Lid



- Remove the two 4mm Phillips #0 screws located at the top that fasten the screen bracket to the laptop.

## Step 6 — Remove LCD Screen from Bracket



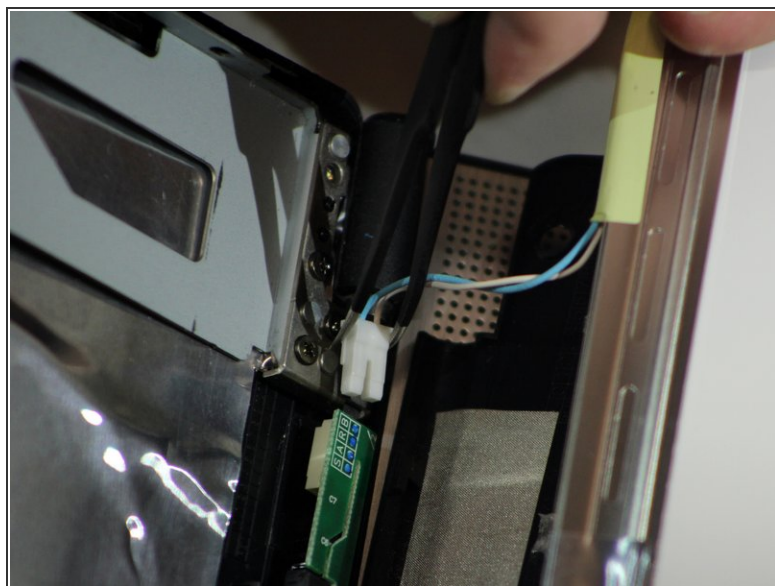
- Separate the bracket and the screen from its original position within the lid of the laptop.
- Remove the four 4mm Phillips #0 screws on the sides of the bracket that hold the LCD screen.

## Step 7 — Remove Video Cable



- Detach the video cable that is attached to the laptop from the back of the screen.
- ⓘ Be careful while removing the video cable as it is very delicate.

## Step 8



- Disconnect the camera connector from the circuit board to completely free the screen.

To reassemble your device, follow these instructions in reverse order.