



# Gateway W350I Keyboard Replacement

If your laptop won't allow you to type, follow these steps to replace the keyboard.

Written By: Spencer



## INTRODUCTION

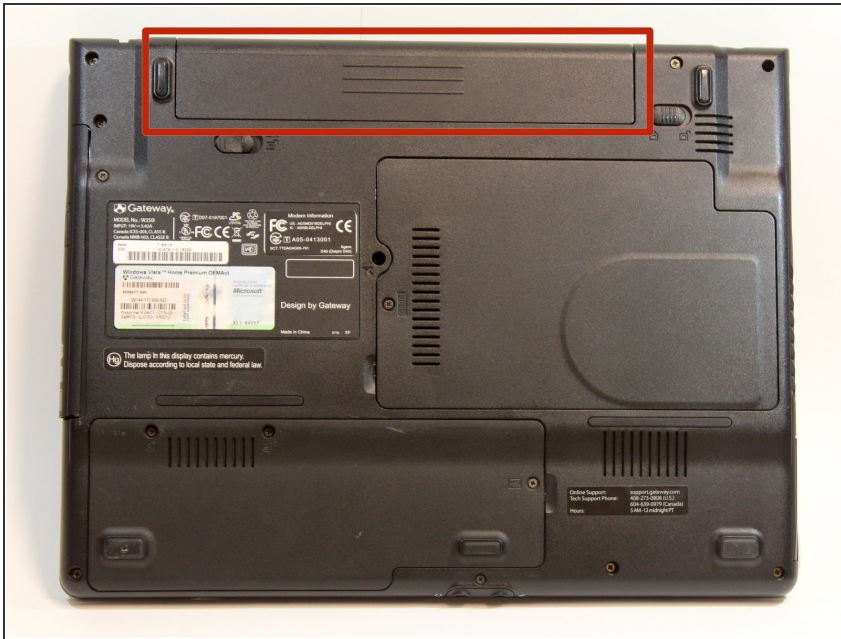
This repair is needed in situations where your keyboard stops working. If you have checked that all the keys are properly seated and that there is nothing blocking key movement, replacing the keyboard should correct the issue.

---

### TOOLS:

- [Phillips #0 Screwdriver](#) (1)
  - [iFixit Opening Tools](#) (1)
-

## Step 1 — Battery Access



- Turn the laptop upside down and position it as shown in the image.

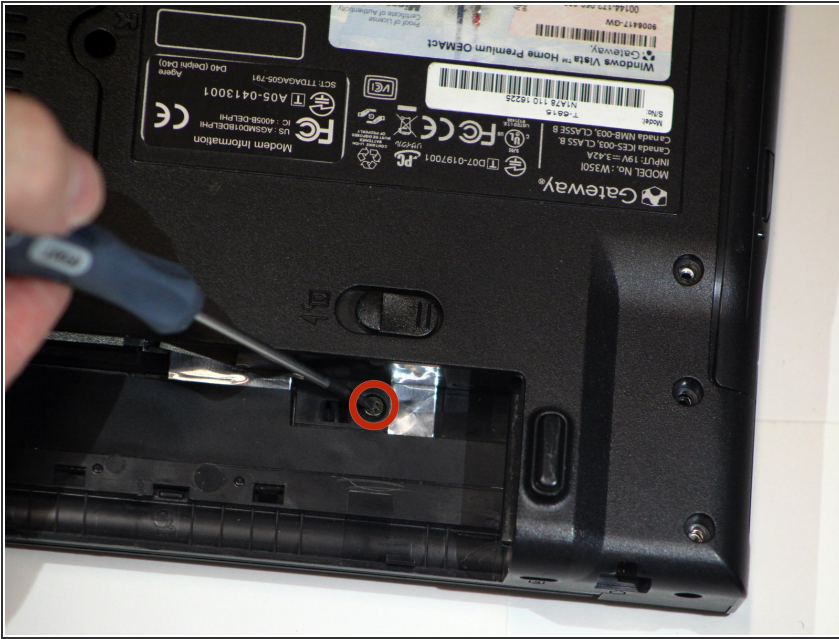
## Step 2 — Unlocking the Battery



- Slide the locking switch towards the open lock picture.
- Hold the release switch in the unlocked position while simultaneously pushing the battery away from the laptop.
- Once the laptop is disengaged, completely remove the battery from the laptop.

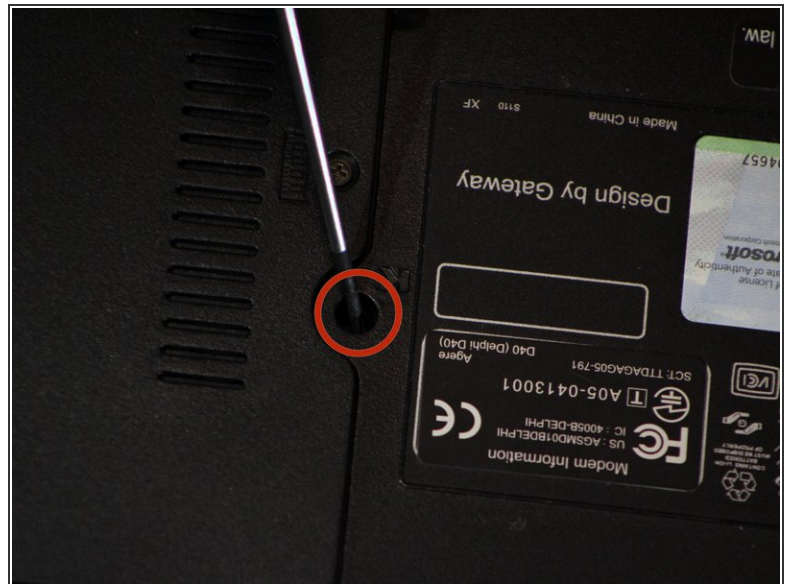
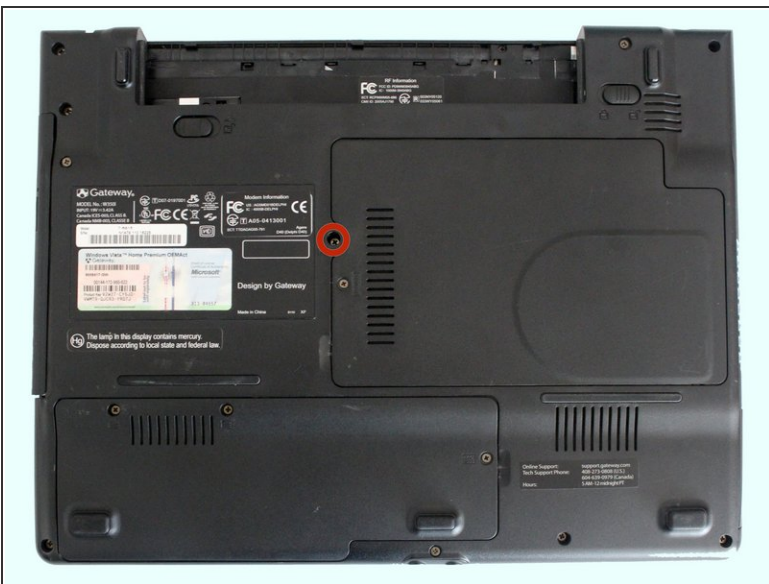


### Step 3 — Unscrewing the Speaker Cover Panel



- Remove a 4mm Phillips #0 screw just beneath the battery that holds the speaker cover panel.

### Step 4 — Unscrewing the Keyboard



- Remove the 4mm Phillips #0 screw that secures the keyboard.

## Step 5 — Repositioning the Device



- Reposition the laptop so that it is upright with the display open.

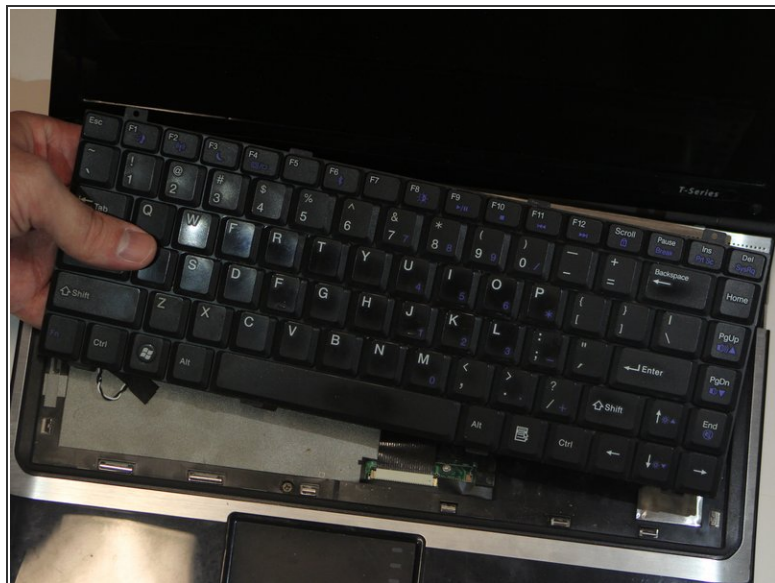
## Step 6 — Removing the Speaker Cover Panel



- Carefully pry up on the right and left sides of the speaker cover panel.
- i** The panel has a cable that connects it to the laptop, so do not pull the panel completely away from the laptop. Instead, disconnect the panel and move it slightly so that it does not interfere with the keyboard.

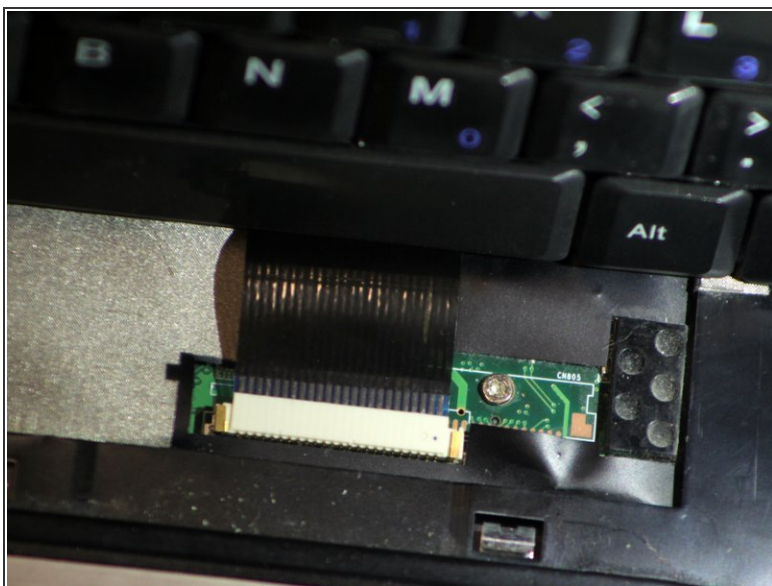


## Step 7 — Removing the Keyboard



- Gently pry up on the corners of the keyboard with the plastic opening tool to free the keyboard.

## Step 8 — Disconnecting the Keyboard



- Pull on the cord connecting the keyboard to the computer until it slides out.
- ⓘ Be careful while removing the cord as it is very delicate.

To reassemble your device, follow these instructions in reverse order.