



Gateway W350I RAM Replacement

If you to change the RAM chips, use this step-by-step guide to explain how to replace the RAM for your Gateway W350I laptop.

Written By: Aaron Austin



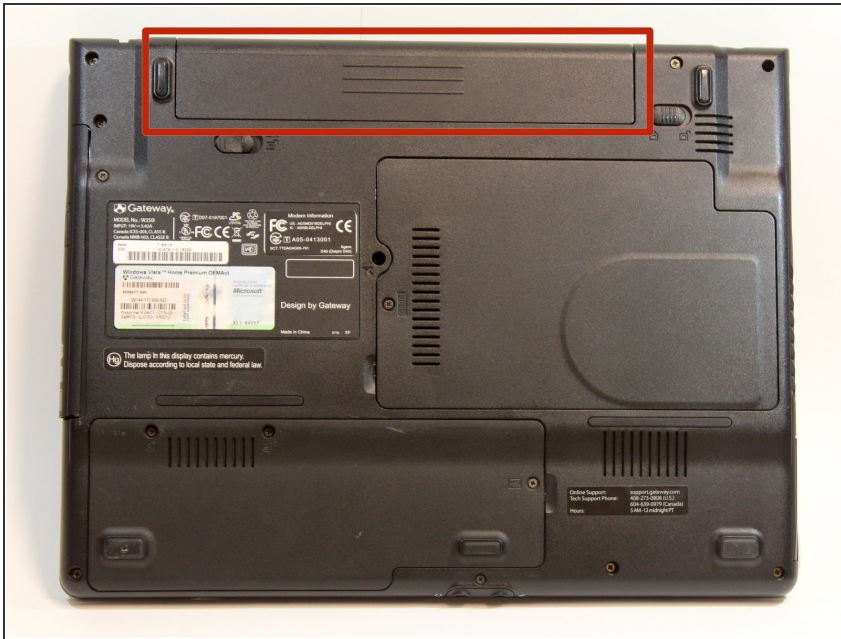
INTRODUCTION

This repair will be needed in circumstances where the computer fails to load software due to insufficient memory. If software adjustments do not fix the issue, replacing the RAM with higher capacity should correct the memory issue.

TOOLS:

- [Small Phillips Head Screwdriver](#) (1)
 - [iFixit Opening Tools](#) (1)
-

Step 1 — Battery Access



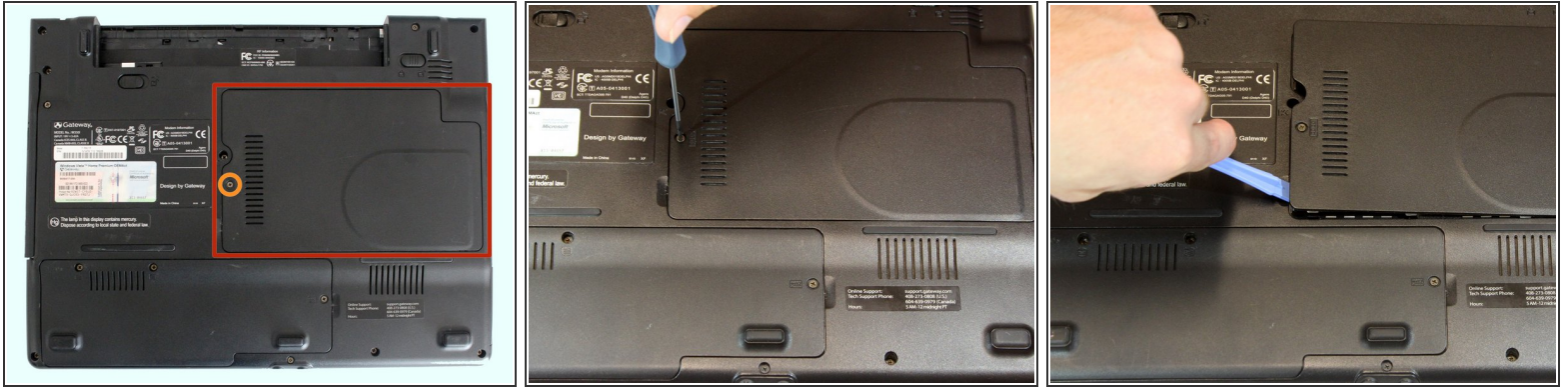
- Turn the laptop upside down and position it as shown in the image.

Step 2 — Unlocking the Battery



- Slide the locking switch towards the open lock picture.
- Hold the release switch in the unlocked position while simultaneously pushing the battery away from the laptop.
- Once the laptop is disengaged, completely remove the battery from the laptop.

Step 3 — Remove Bottom Cover



- Turn the laptop over to remove the plastic cover.
- Remove the single 3mm Phillips #0 screw holding on the plastic cover.
- Use a plastic opening tool to gently pry off the plastic cover.

Step 4 — Removing RAM Chips



- Gently pull the first RAM chip to slide it free from the mounting on the board.
- Gently pull the second RAM chip, located under the first, to slide it free from the mounting on the board.

To reassemble your device, follow these instructions in reverse order.