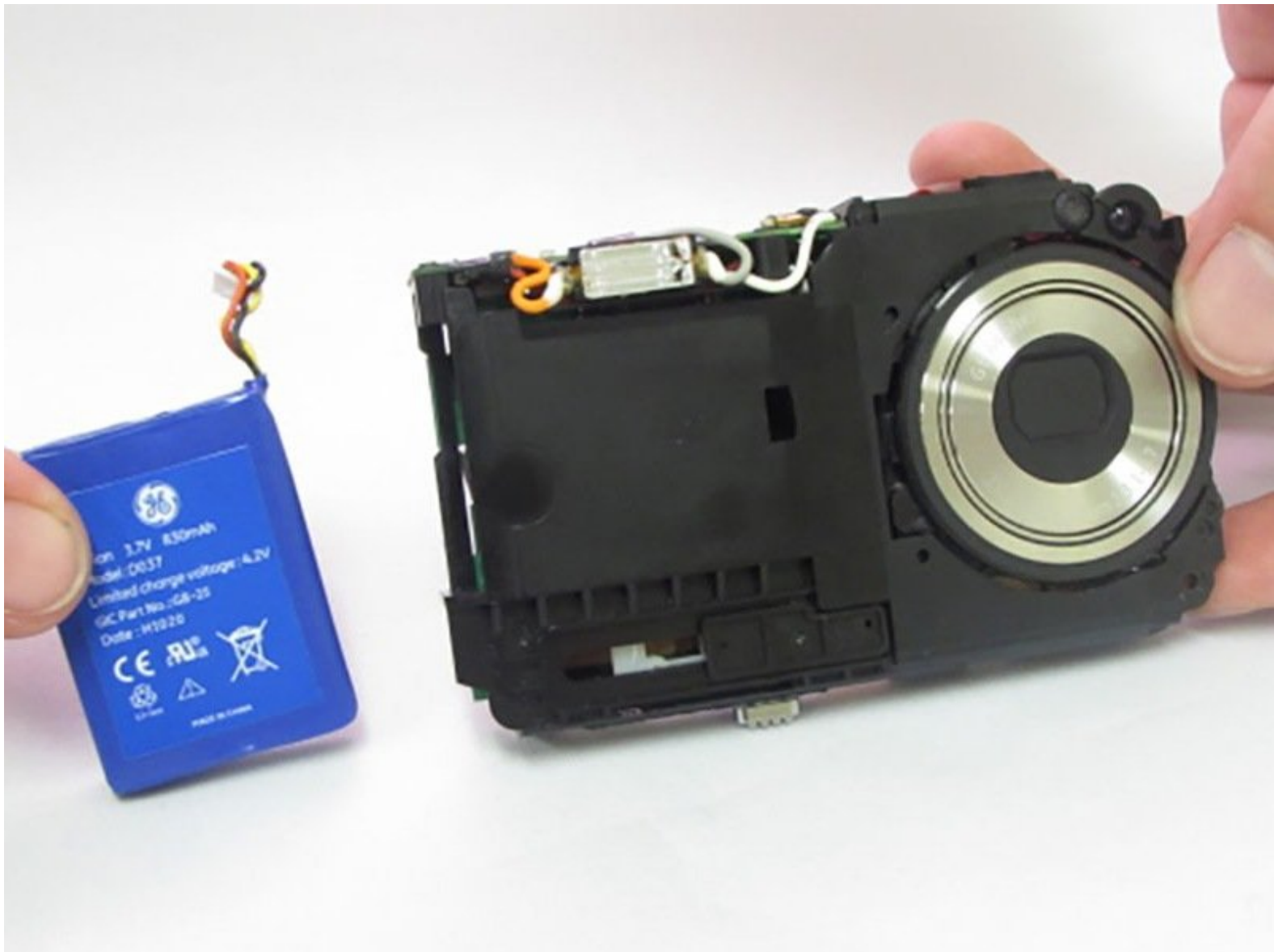




General Electric Create Jason Wu Battery Replacement

This is a solution for a faulty camera battery.

Written By: Kailee Poe



INTRODUCTION

This guide will exhibit the steps necessary to replace the battery on your General Electric Create Jason Wu.



TOOLS:

- [Precision Tweezers Set](#) (1)
- [iFixit Opening Tools](#) (1)
- [Phillips #00 Screwdriver](#) (1)
- [Precision screwdriver kit \(Phillips bits\)](#) (1)



PARTS:

- [Magnetic Project Mat](#) (1)

Step 1 — General Electric Create Jason Wu Casing Disassembly



- Begin by removing the 5 screws (located: 2 screws on either side and 1 screw on the bottom) using the PH000 head in the Precision Phillips Screwdriver.
- ⓘ These screws were missing in our example. These screws should have been small Phillips PH000 screws 1.5mm in length.
- ⚠ These screws are very small. To keep from losing any pieces, place all small metals on a magnetic project mat.

Step 2



- After the screws are removed, pull the front casing up and away from the camera.
- ⓘ If the casing is difficult to remove, use a plastic opening tool to gently pry up on the front as shown.

Step 3



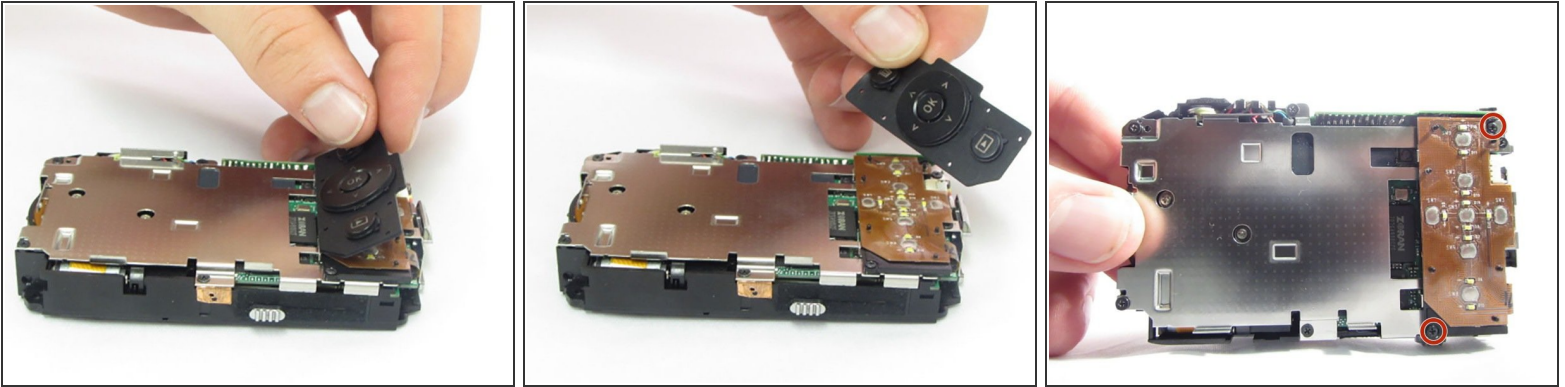
- Using your hands or an opening tool, pry off the silver frame, taking special care at the top of the camera where the buttons are as it is a little harder to pry off.
- ⓘ If the back casing is loose from the camera body, it may be easier to perform step 4 first, then accomplish this step. Proceed as your unit allows.

Step 4



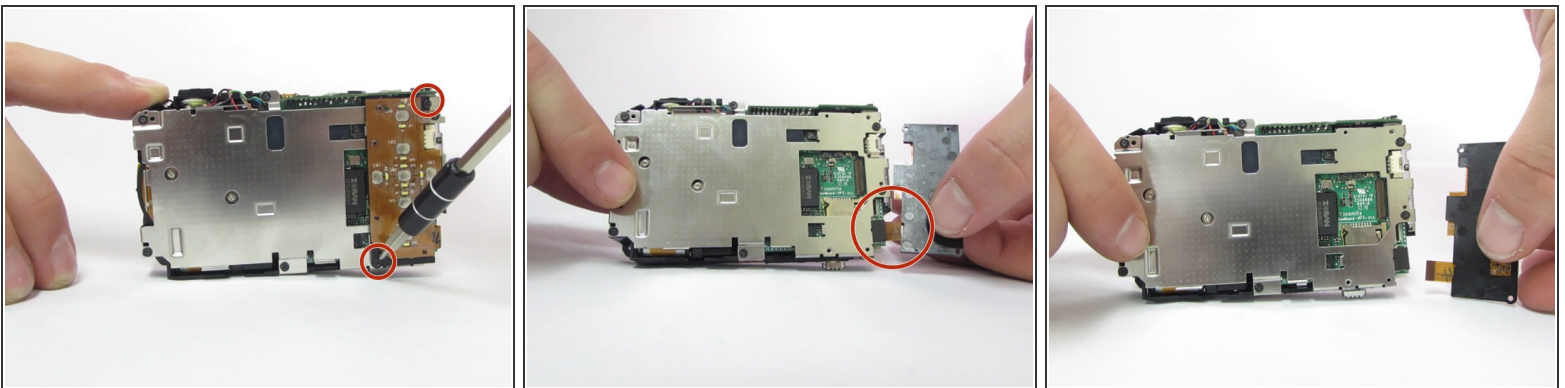
- The last part of the casing to disconnect is the back that houses the LCD screen.
- The screen is attached by a connection ribbon. Gently pull the casing and screen away from the camera body to disconnect the casing.
- ⓘ The LCD screen is held onto the back casing by a small amount of adhesive. This may come loose during this process. Do not worry if they become separated.
- ⚠ This plug and the connection ribbon are fragile, try not to tear the connection ribbon when disconnecting.

Step 5 — General Electric Create Jason Wu Interior Disassembly



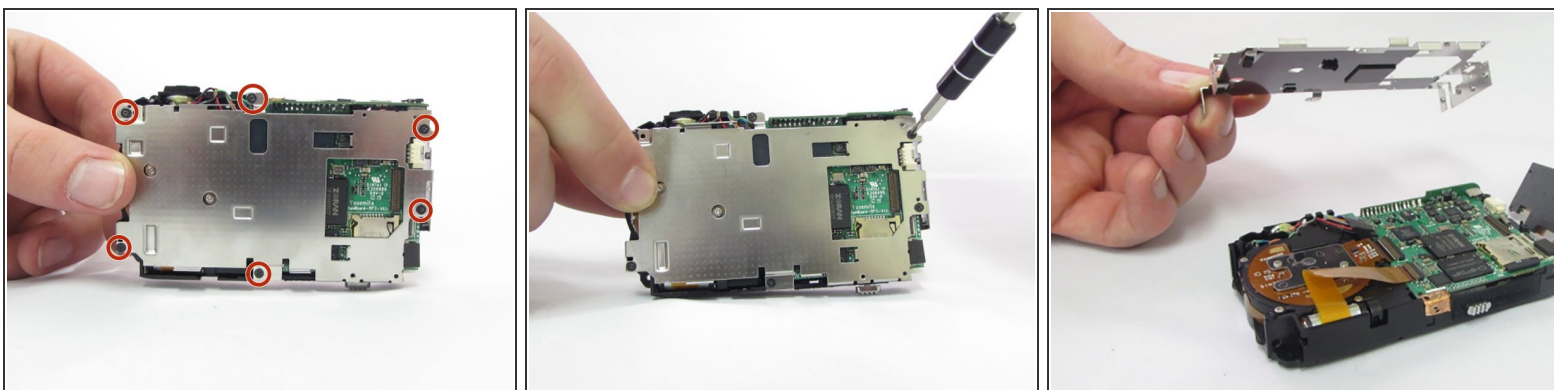
- After the casing is removed, use your fingers to carefully lift up on the rubber pad, if it didn't already fall out during step 4.
- ⓘ The pad isn't secured to the camera so it will lift up and pull away easily.
- After the pad is removed, the 2 Phillips head screws holding the control board will be exposed.

Step 6



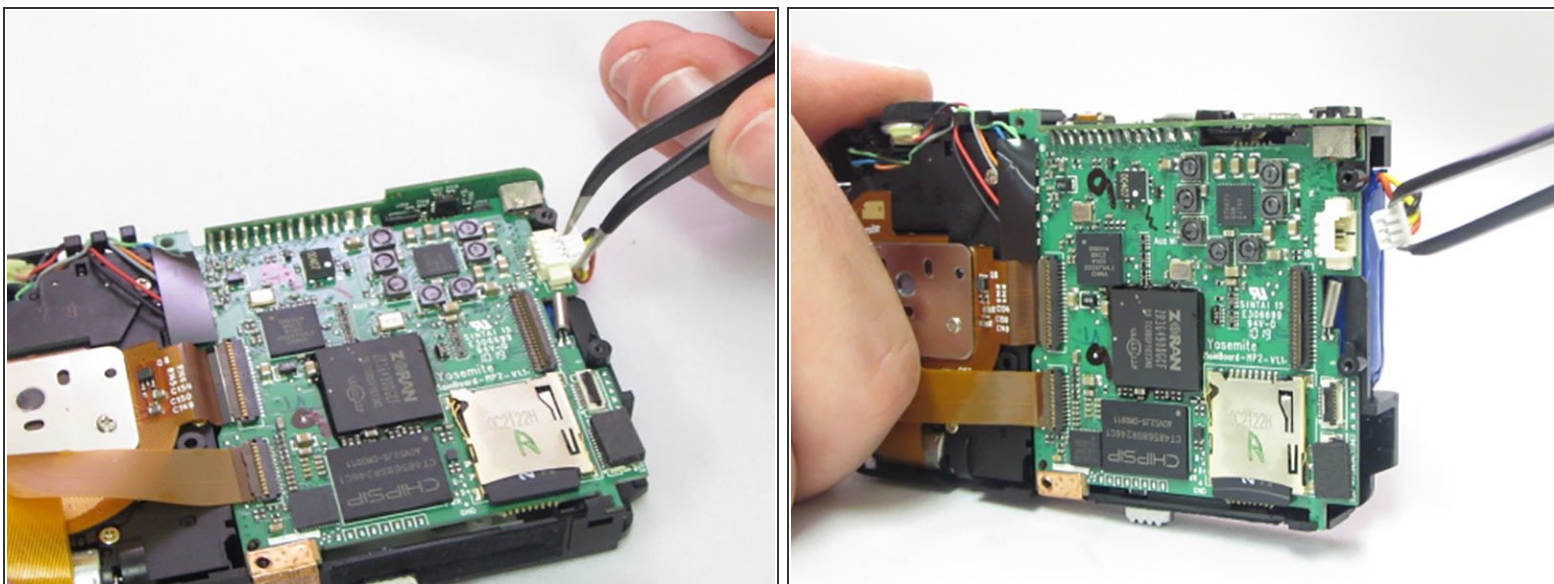
- Using the Phillips precision screwdriver with the PH000 Phillips bit, remove the two 1.5mm screws.
- ⚠ Although the 2 screws are removed, the button board is still attached with a connection ribbon.
- With a firm grip towards the bottom of the control board, gently pull away from the camera, removing the ribbon from the connector.

Step 7



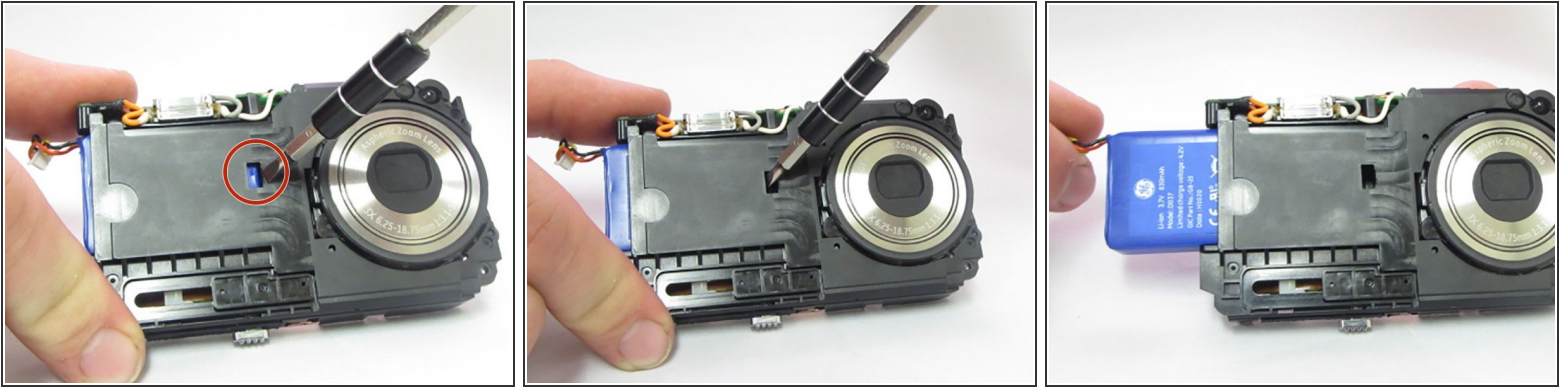
- Locate the six 1.5mm Phillips screws that are holding on the interior camera frame.
- Using the Phillips precision screwdriver and the PH000 Phillips bit, remove the 6 screws.
- With the screws removed, the interior frame will no longer be fastened to the camera body and can be lifted up and away.

Step 8 — Battery




- Using the Curved Precision Tweezers, detach battery plug from socket.
- ⓘ Some may find the tweezers unnecessary for this step and instead may use their fingers to gently detach the plug.

Step 9



- Swap the 3.0 Flathead bit into the precision screw driver.
- On the front of the camera locate the small rectangular slot where the battery is exposed.
- Use the flathead bit to gently pry on the battery to start pushing it out of the camera, allowing it to become loose.

 Do not pull the battery out too hard or the wires will break.

To reassemble your device, follow these instructions in reverse order.