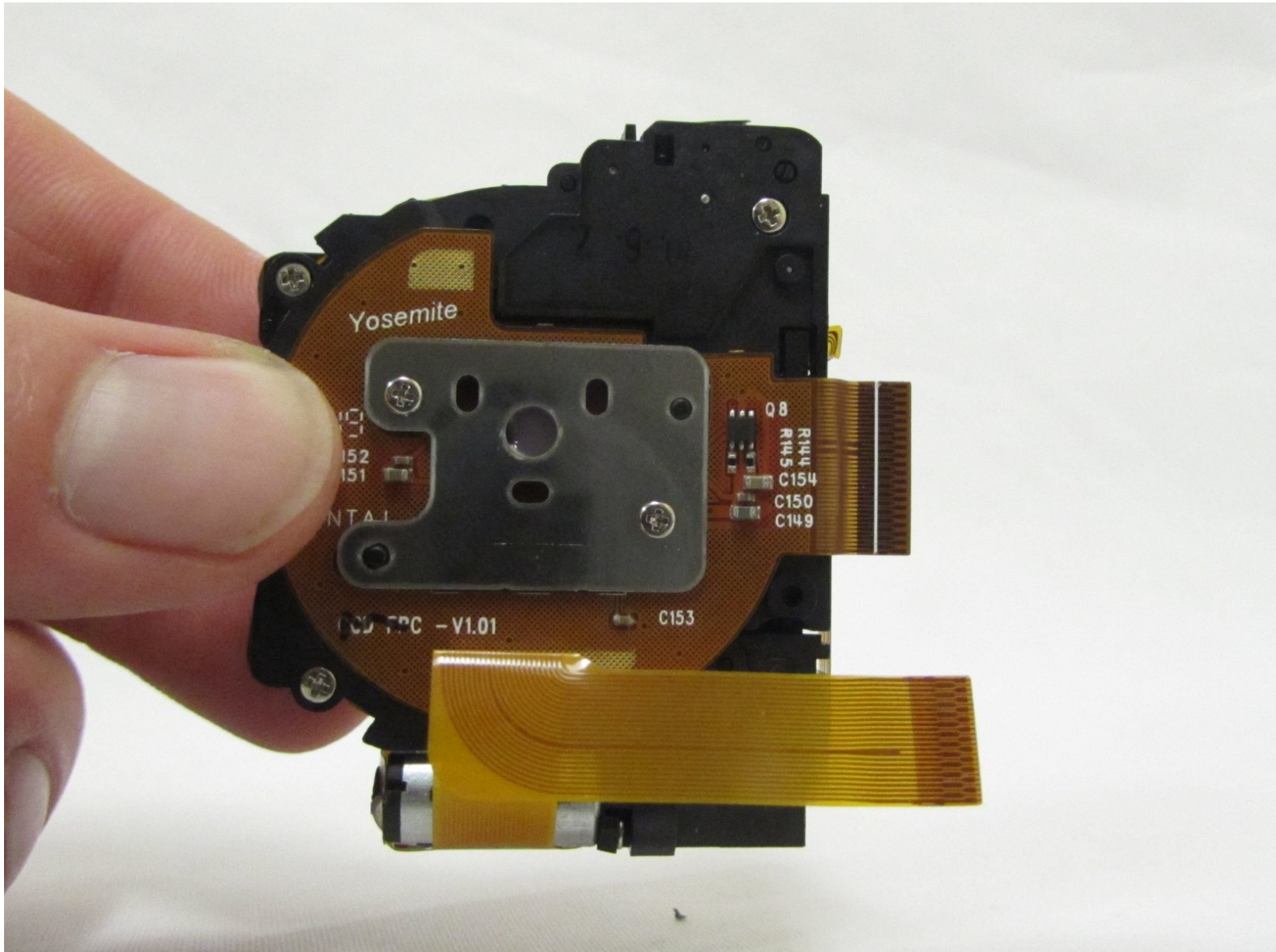




General Electric Create Jason Wu Lens Replacement

If your photos are blurry or the lens is damaged it may need to be replaced, here is how.

Written By: Kylan Hennessy



INTRODUCTION

This guide will demonstrate how to locate and remove the lens assembly.



TOOLS:

- [Precision Tweezers Set](#) (1)
- [Phillips #00 Screwdriver](#) (1)
- [Precision screwdriver kit \(Phillips bits\)](#) (1)
- [iFixit Opening Tools](#) (1)



PARTS:

- [Magnetic Project Mat](#) (1)

Step 1 — General Electric Create Jason Wu Casing Disassembly



- Begin by removing the 5 screws (located: 2 screws on either side and 1 screw on the bottom) using the PH000 head in the Precision Phillips Screwdriver.
- ⓘ These screws were missing in our example. These screws should have been small Phillips PH000 screws 1.5mm in length.
- ⚠ These screws are very small. To keep from losing any pieces, place all small metals on a magnetic project mat.

Step 2



- After the screws are removed, pull the front casing up and away from the camera.
- ⓘ If the casing is difficult to remove, use a plastic opening tool to gently pry up on the front as shown.

Step 3



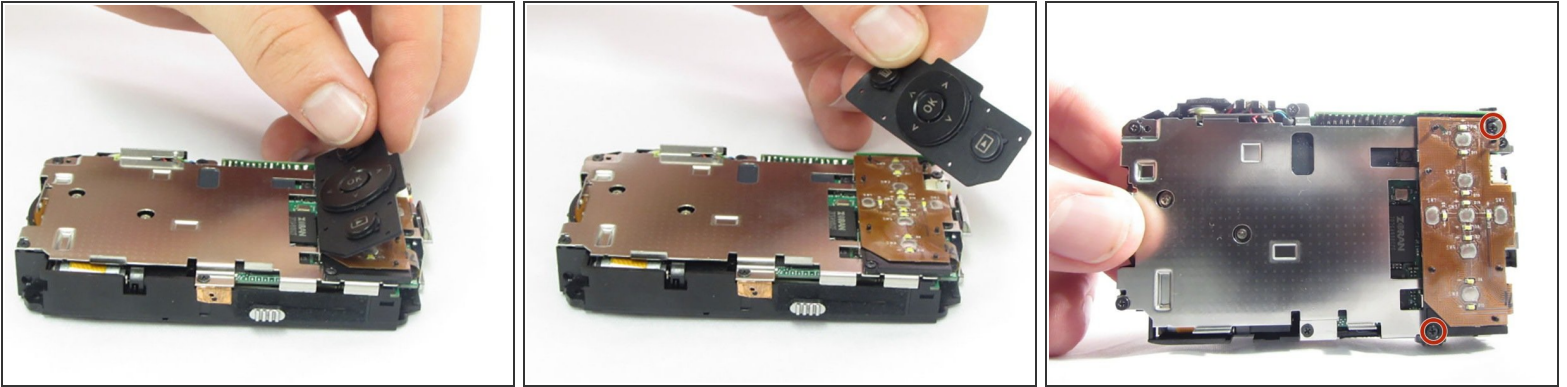
- Using your hands or an opening tool, pry off the silver frame, taking special care at the top of the camera where the buttons are as it is a little harder to pry off.
- ⓘ If the back casing is loose from the camera body, it may be easier to perform step 4 first, then accomplish this step. Proceed as your unit allows.

Step 4



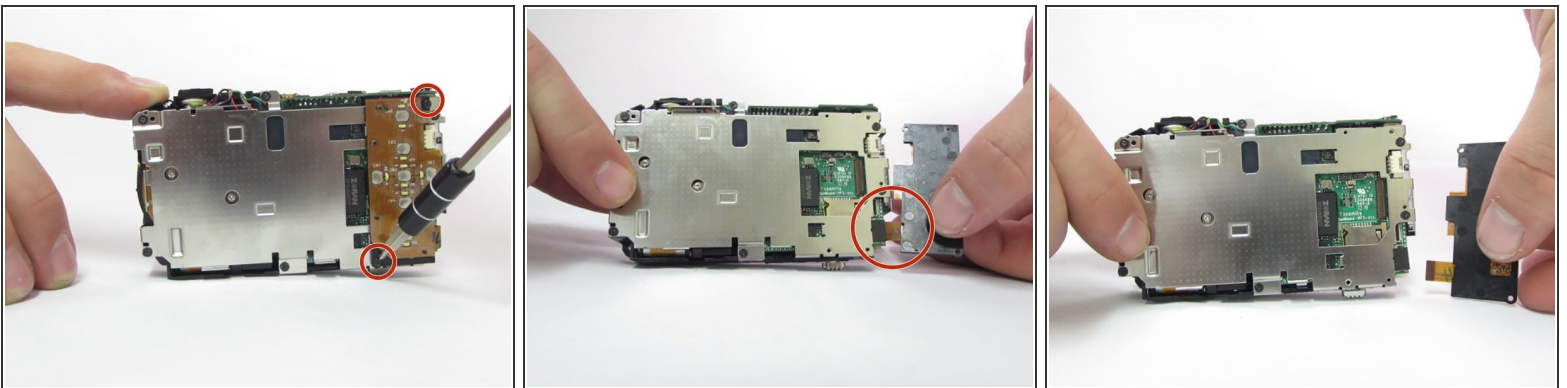
- The last part of the casing to disconnect is the back that houses the LCD screen.
- The screen is attached by a connection ribbon. Gently pull the casing and screen away from the camera body to disconnect the casing.
- ⓘ The LCD screen is held onto the back casing by a small amount of adhesive. This may come loose during this process. Do not worry if they become separated.
- ⚠ This plug and the connection ribbon are fragile, try not to tear the connection ribbon when disconnecting.

Step 5 — General Electric Create Jason Wu Interior Disassembly



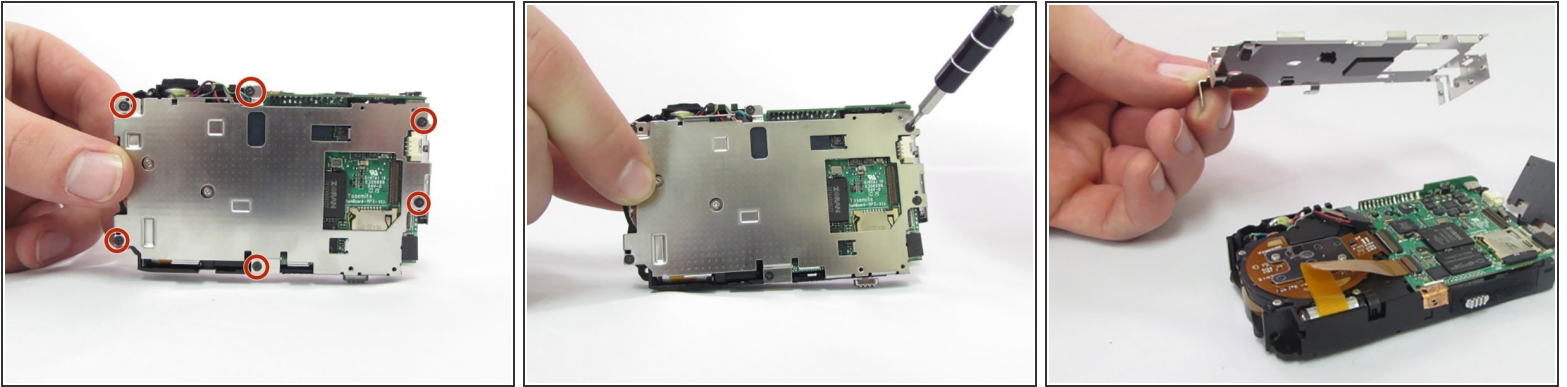
- After the casing is removed, use your fingers to carefully lift up on the rubber pad, if it didn't already fall out during step 4.
- ⓘ The pad isn't secured to the camera so it will lift up and pull away easily.
- After the pad is removed, the 2 Phillips head screws holding the control board will be exposed.

Step 6



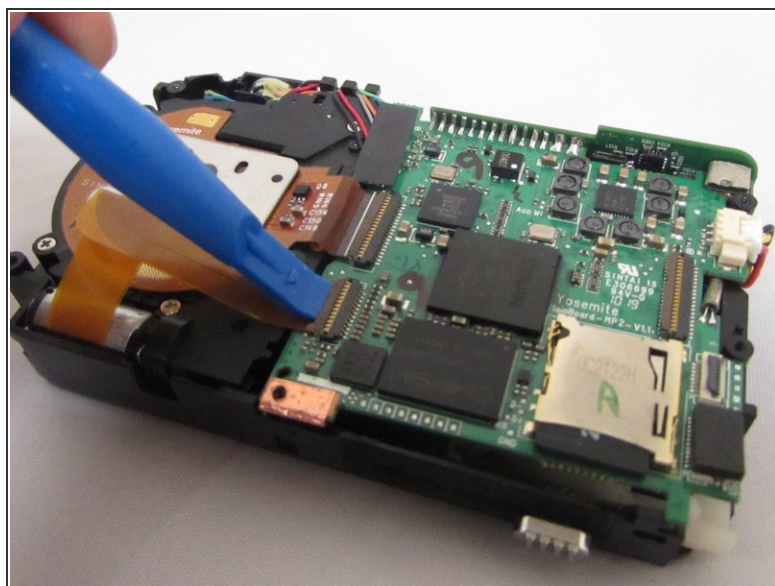
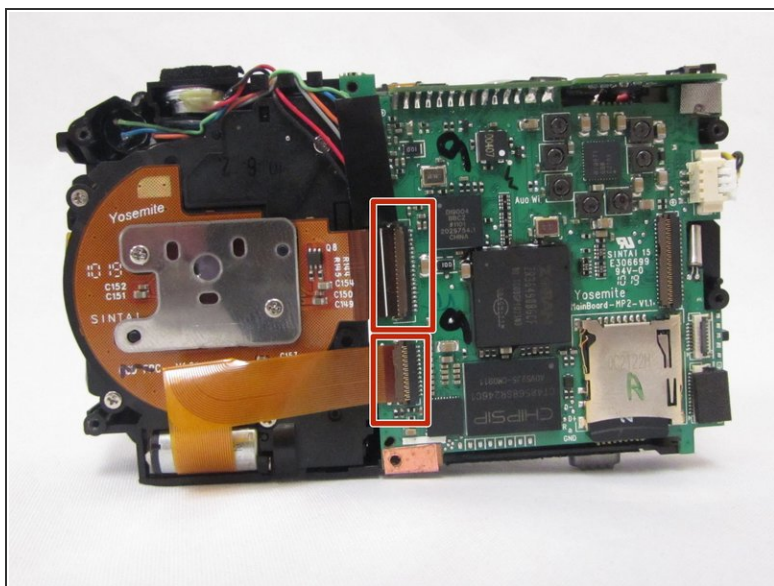
- Using the Phillips precision screwdriver with the PH000 Phillips bit, remove the two 1.5mm screws.
- ⚠ Although the 2 screws are removed, the button board is still attached with a connection ribbon.
- With a firm grip towards the bottom of the control board, gently pull away from the camera, removing the ribbon from the connector.

Step 7



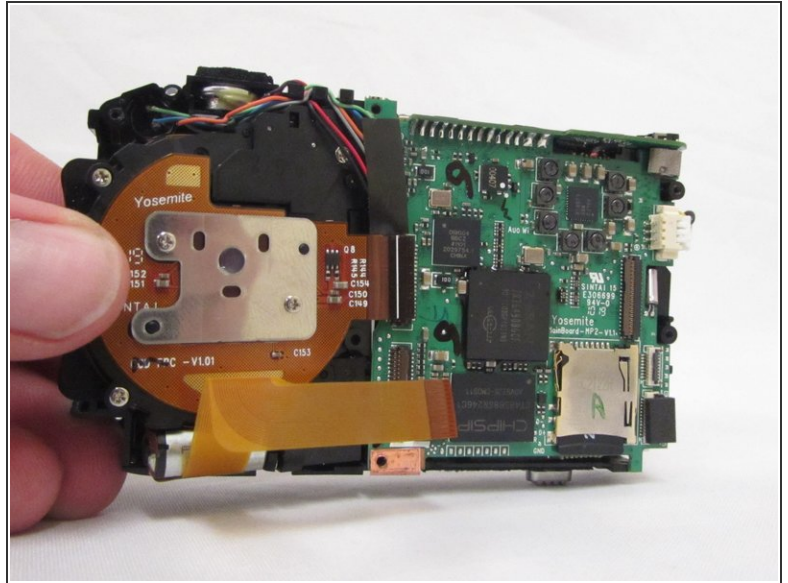
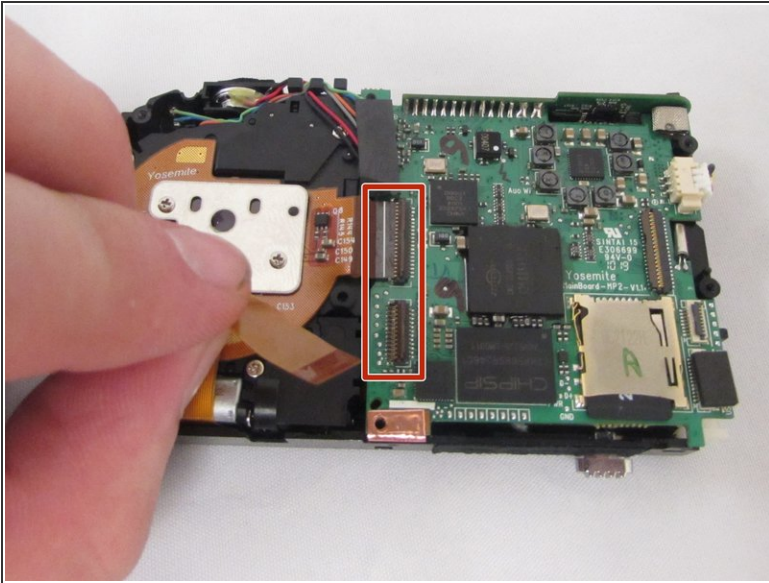
- Locate the six 1.5mm Phillips screws that are holding on the interior camera frame.
- Using the Phillips precision screwdriver and the PH000 Phillips bit, remove the 6 screws.
- With the screws removed, the interior frame will no longer be fastened to the camera body and can be lifted up and away.

Step 8 — Lens



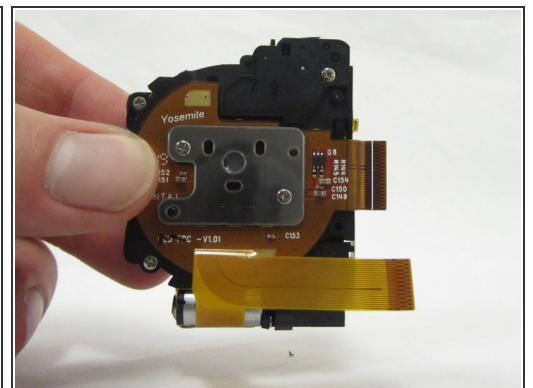
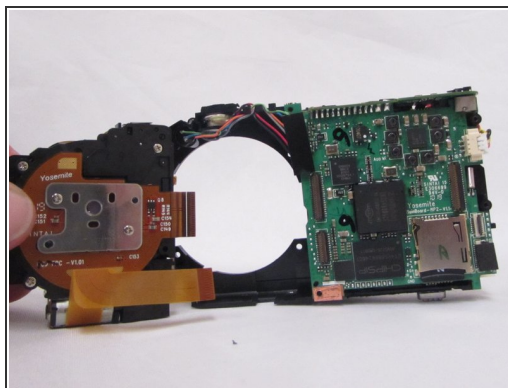
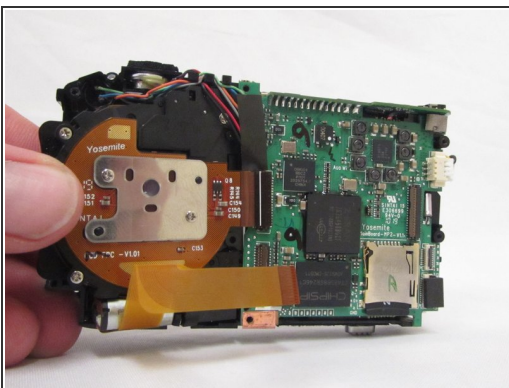
- Locate the 2 connection ribbons attaching the lens to the circuit board.
 - Using a plastic opening tool or finger nail, gently lift the ZIF connector flaps up.
- ⚠ The connectors are hinged and will fold up and away from the ribbon, do not disconnect completely.

Step 9



- With the hinged connectors folded up and out of the way, carefully pull the ribbons out of their connectors.
- ⓘ These are the only 2 connectors holding the lens assembly in place. If disconnected the lens assembly will be completely detached from the camera.

Step 10



- Firmly grasp the camera body in your right hand and grab the lens assembly with your other hand.
- Gently pull the lens assembly directly up and out of the camera body.
- ⓘ There are no further screws or connections hold the lens assembly in place. If it does not remove easily check your previous steps.

To reassemble your device, follow these instructions in reverse order.