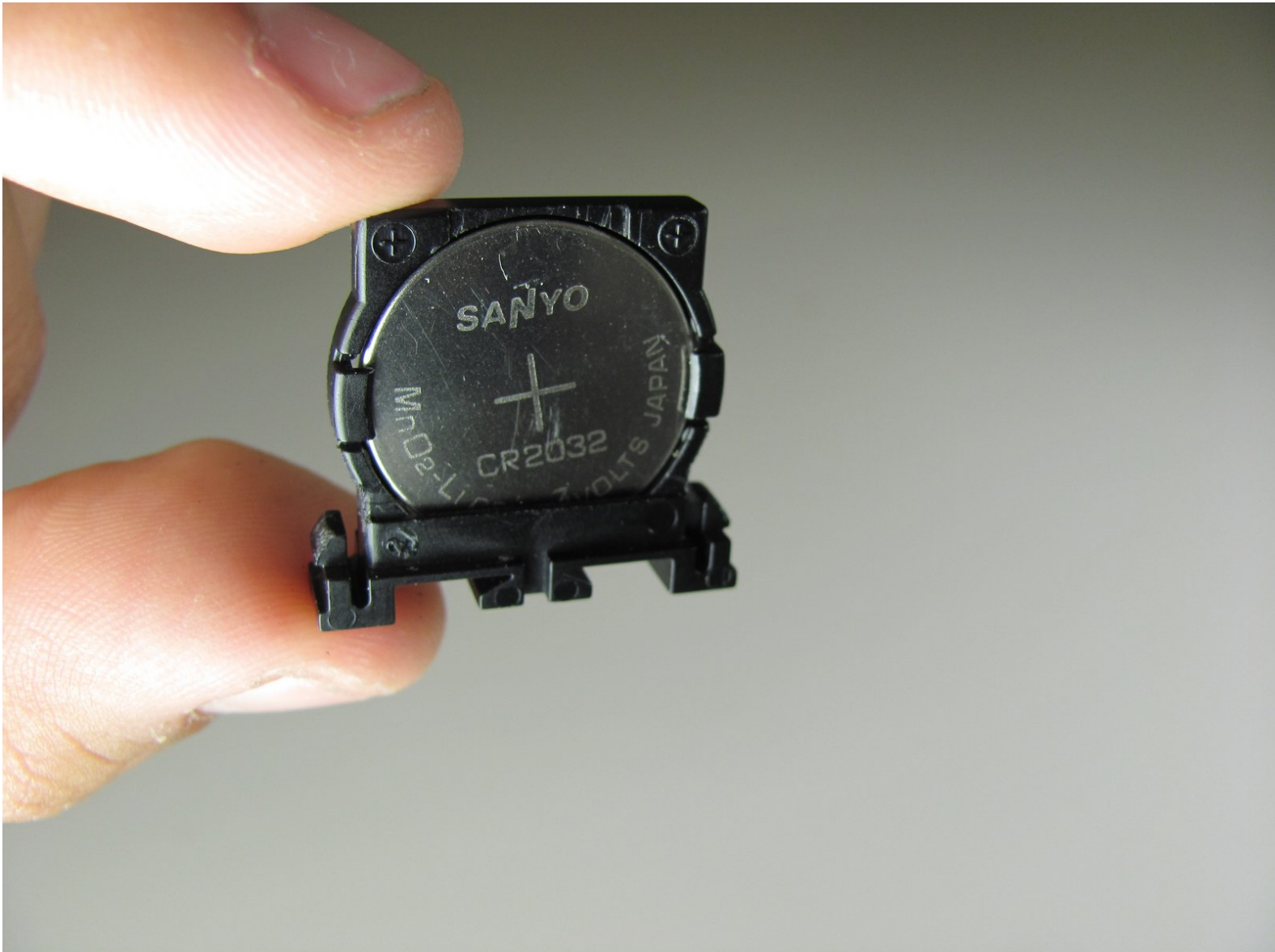




General Electric Telephone 2-9710A 3V Headset Battery Replacement

Replace internal battery of the handset device

Written By: Norberto Sanchez



INTRODUCTION

Use this guide to replace the internal battery of the handset



TOOLS:

- [Tweezers](#) (1)
- [Phillips #1 Screwdriver](#) (1)
- [iFixit Opening Tools](#) (1)




PARTS:

- [CR2032 Lithium Battery](#) (1)

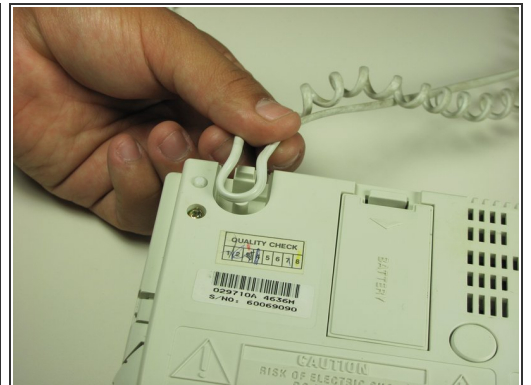
Step 1 — Phone Cord



 Unplug the device before proceeding.

- Remove the phone cord from the phone jack from the base of the headset.
- Use a plastic opening tool to remove the phone cord.

Step 2



- Remove the phone cord screw cap.
 - Unscrew the 7.5mm screw.
- Remove the screw cap.
- Remove the cord from the phone base.

Step 3 — Disassembling General Electric Telephone 2-9710A Handset



- Remove the plastic cover with a Plastic Opening Tool by gently sliding the tool underneath the plastic and pry the cover off.

Step 4



- Remove the paper with a Plastic Opening Tool by gently sliding the tool underneath and prying the paper away from the phone.

Step 5



- Remove the rubber stopper with a Plastic Opening Tool by gently sliding the tool underneath and pry away from the phone.

Step 6



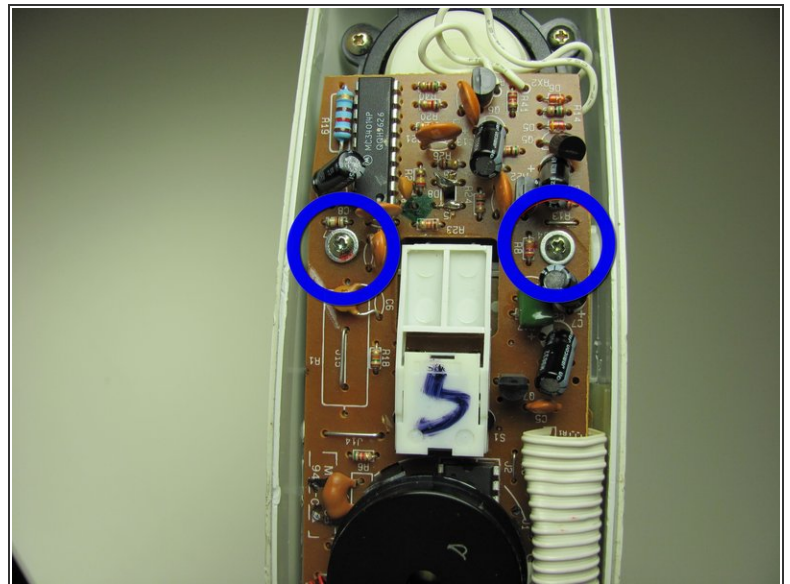
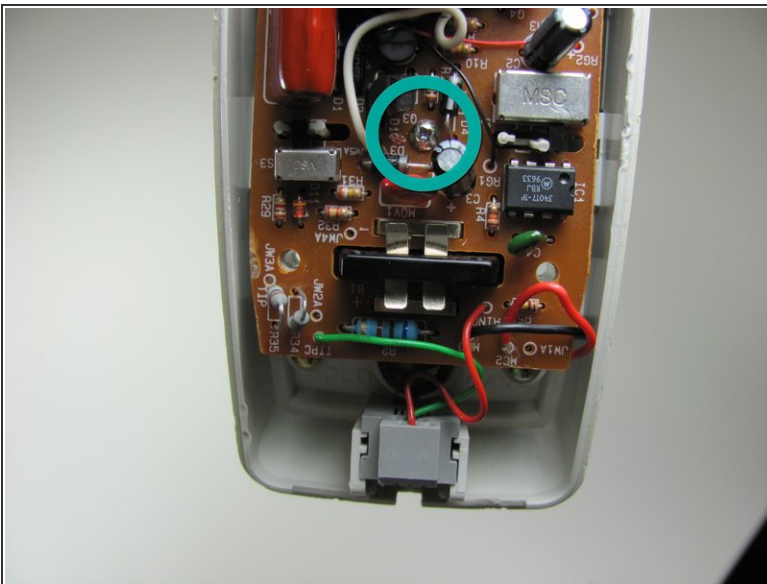
- Remove the two screws.
 - Remove the 2 21mm screws by using a Philips #1 screwdriver.

Step 7



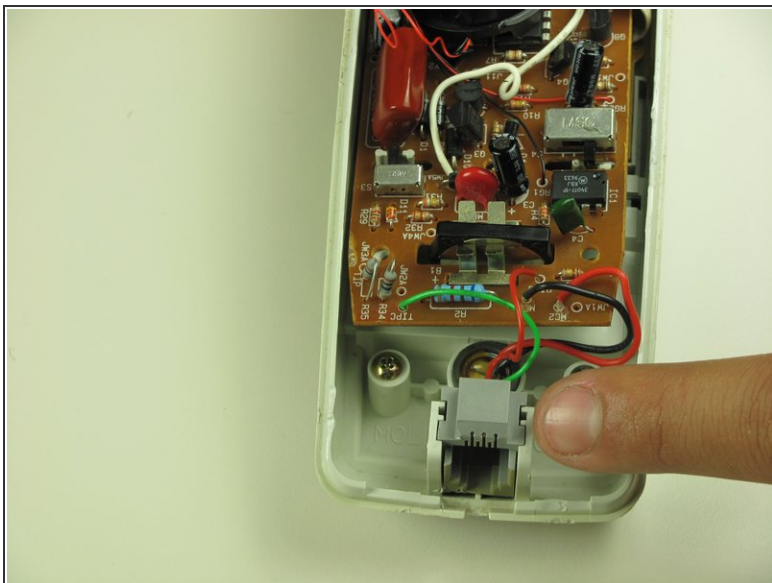
- Pull apart the handset by pulling the shell away from the other half of the phone.

Step 8



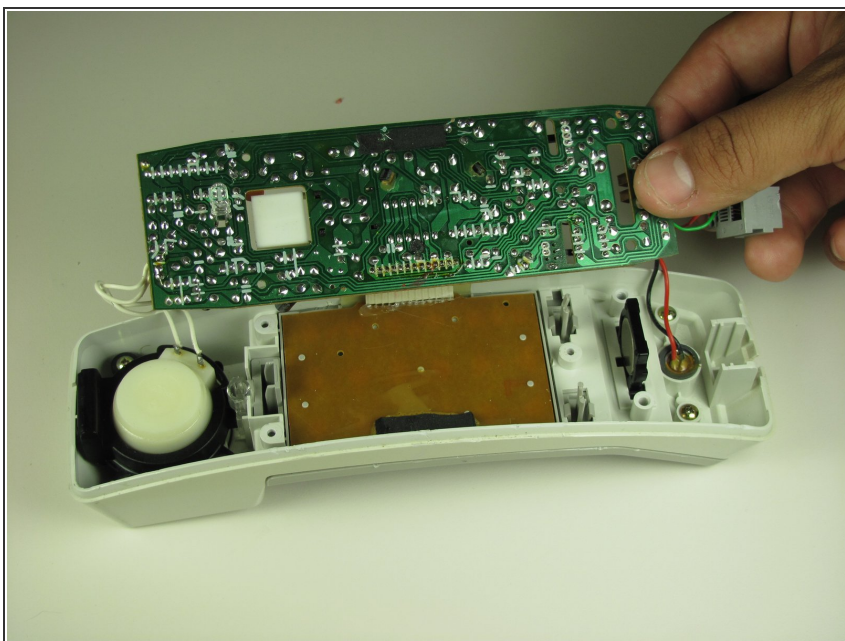
- Remove 3 screws attaching the logic board to shell.
 - Remove the 13mm screw with a Philips #1 screwdriver.
 - Remove the 2 13mm screws with washers with a Philips #1 screwdriver.

Step 9



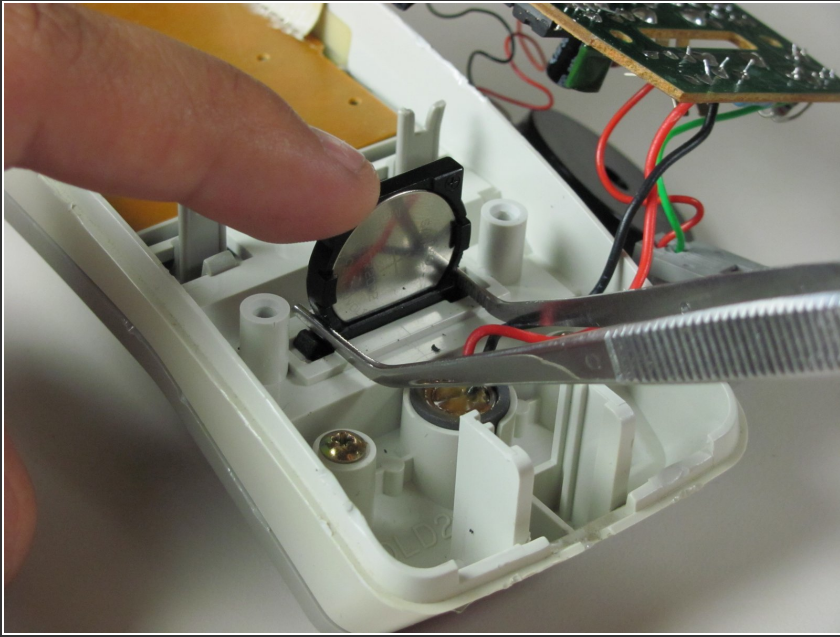
- Slide out the phone jack from the shell by gently lifting up the phone jack.

Step 10



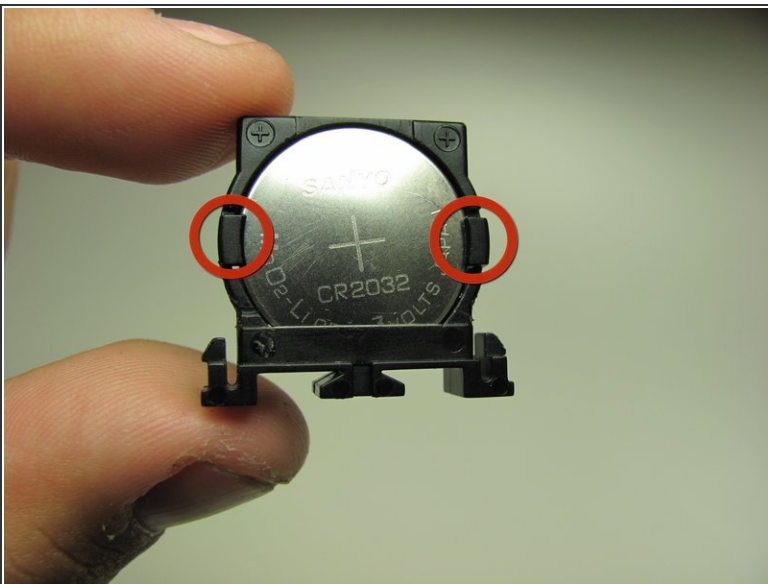
- Without removing the logic board completely, pivot the logic board out of shell.

Step 11 — 3V Headset Battery



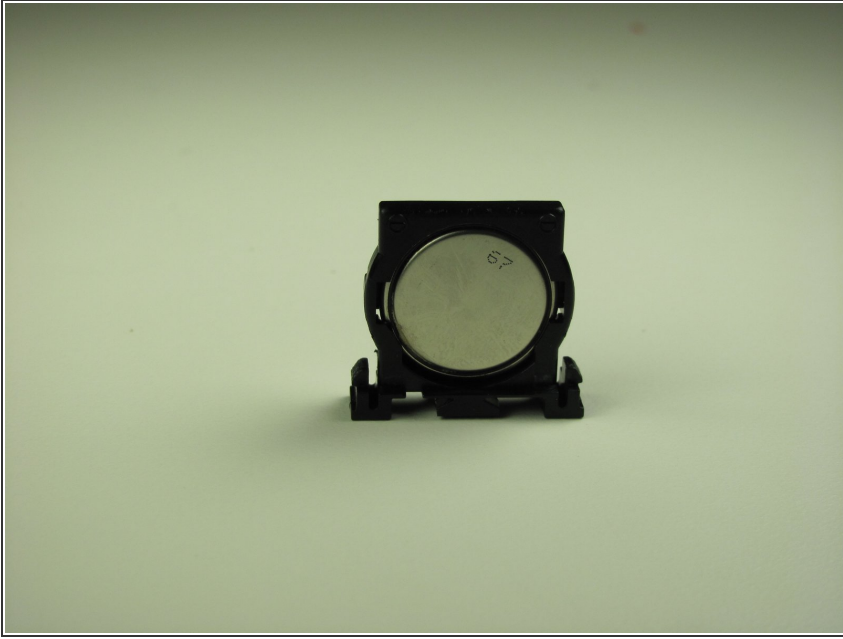
- Use tweezers to apply pressure on battery holder tabs.
- Apply pressure directly on battery holder to slide it through the shell.
- Battery is going to slide through the bottom.

Step 12



- Lift tabs on the side of the holder by putting your fingers directly on the tab to pull it apart.
- While holding the battery, remove it from the holder.

Step 13



- Now insert the new battery.
- Ensure that the positive side of the battery is facing the tabs.

To reassemble your device, follow these instructions in reverse order.