



Generic TV Remote IR LED Replacement

Replace a broken or malfunctioning IR LED on a generic TV Remote and know how to check if it works.

Written By: Geoffrey Smith





TOOLS:

- [iFixit Opening Tools](#) (1)
- [Soldering Iron](#) (1)



PARTS:

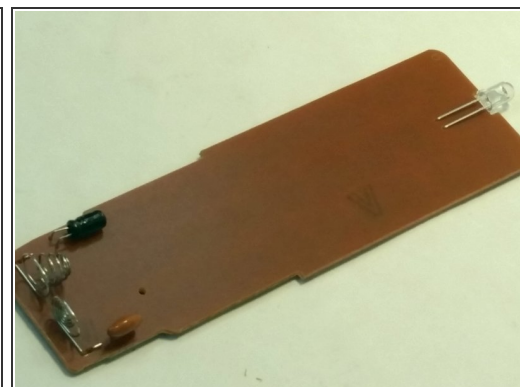
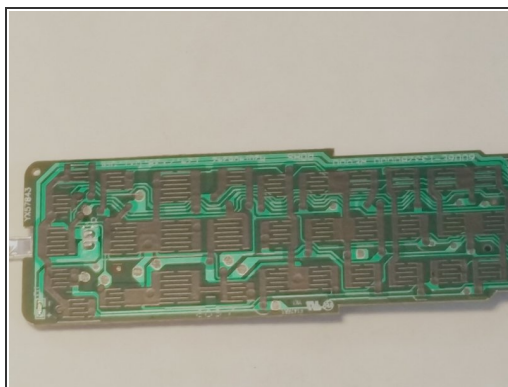
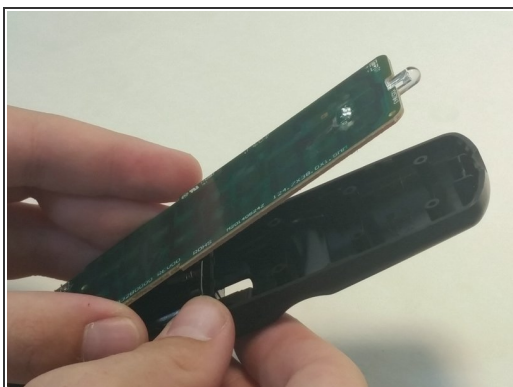
- [IR LED](#) (1)

Step 1 — IR LED



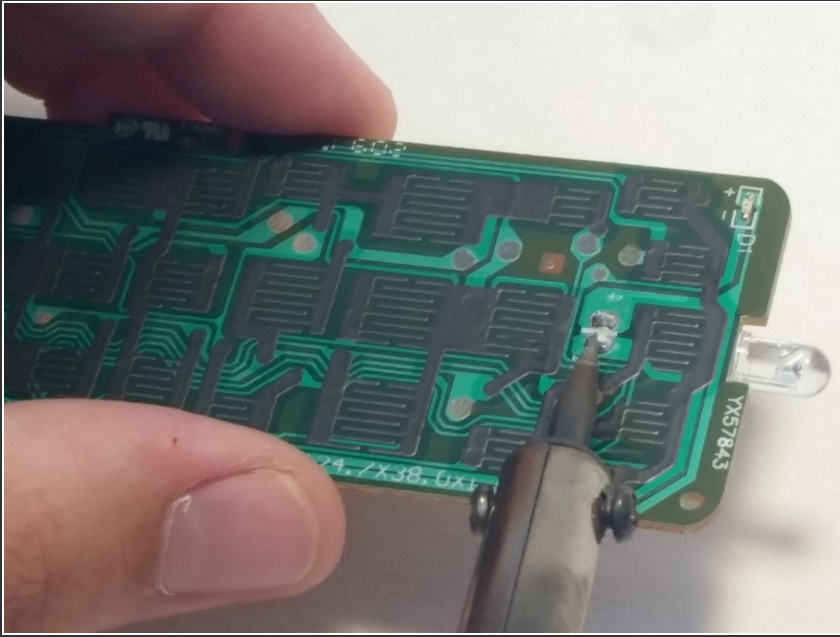
- Starting to the left or right of the front LED, pry open the sides of the remote.

Step 2



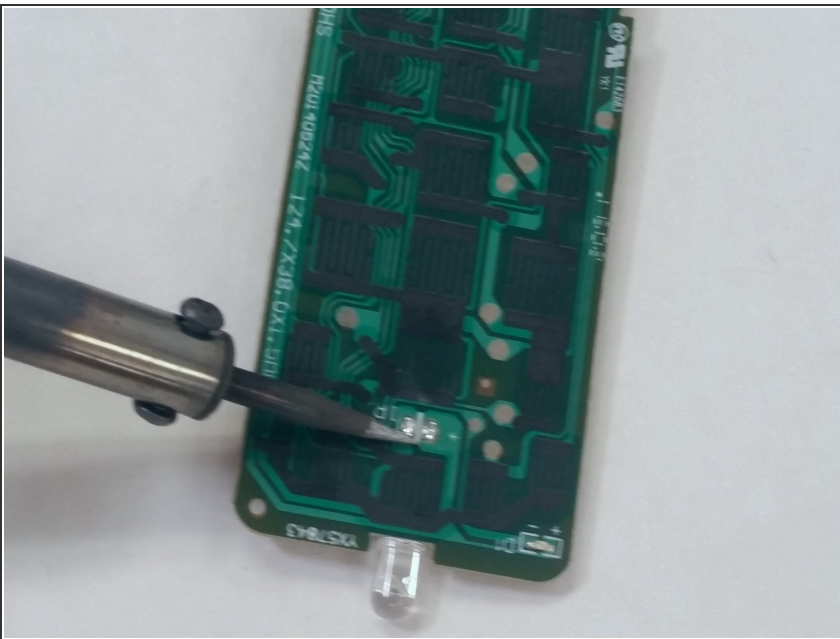
- Remove the circuit board from the casing by gently lifting upwards and turn the side opposite the LED facing up.

Step 3



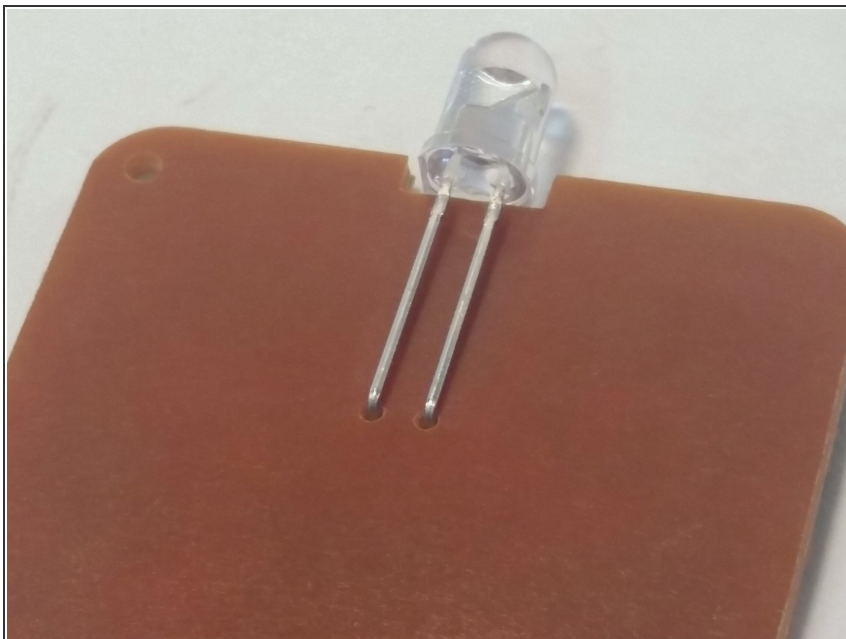
- Desolder the broken LED using a soldering iron and desoldering braid or other removal method.

Step 4



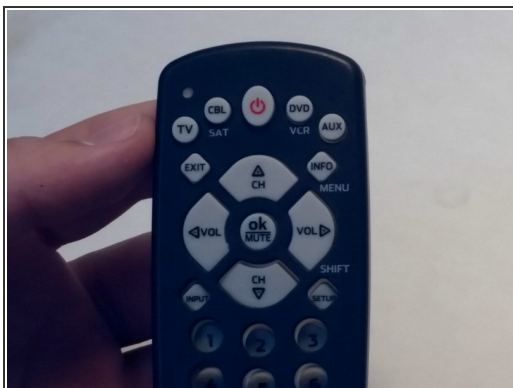
- Solder the new LED in the same spot as the old one.
- ⓘ Make sure that the longer lead (positive) goes through the hole marked positive when soldering.

Step 5



- Clip the leads of the LED, then bend the LED towards the circuit board at a 90 degree angle

Step 6



- ☑ Make sure the buttons and the circuit board are placed back correctly before reassembly

Step 7



- i** To check if your remote is now working, check the batteries are in correctly then press a button on the remote. Aim the remote at a smartphone camera while pressing a button and you should see a flashing light being emitted.

To reassemble your device, follow these instructions in reverse order.