



George Foreman Grill Model GRP99 A Thermal Switch Mount Screws Replacement

This iFixit guide is to show how to fix a loose thermal switch by resizing the screw threads and adding new screws to fix the mount for the switch.

Written By: Casey Dew



INTRODUCTION

In this guide the thermal switch has come loose in the grill and is preventing the grill from heating up. The bottom grill plate should be removed to reach the support mount, where the screw hole threads have worn down and need to be rethreaded with new screws added.



TOOLS:

- 1 Phillips head screw driver (1)
- Electric rotary drill (1)
- 1 8-inch drill bit (1)
- 6 32-inch tap (1)
- Tap Handle (1)
- 3 32-inch hex style Allen wrench (1)



PARTS:

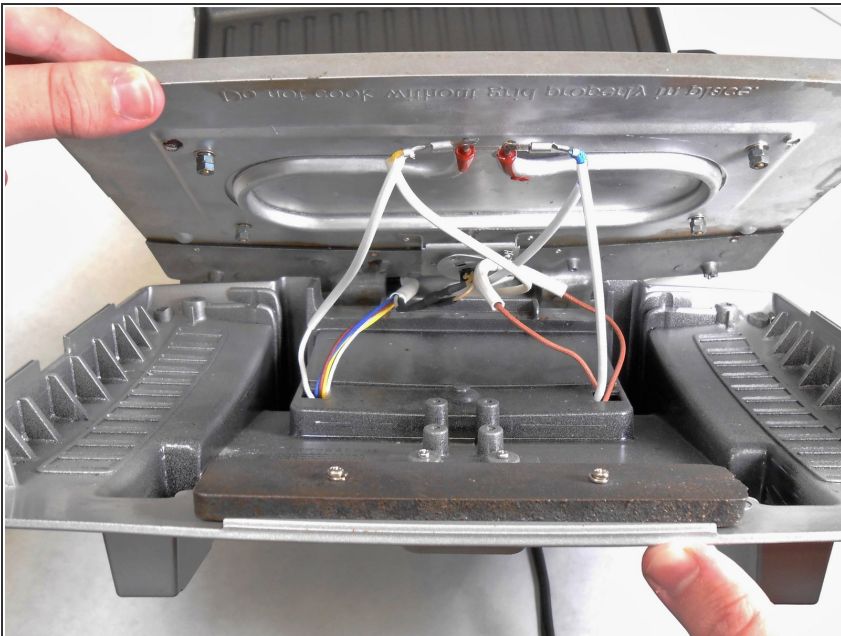
- Two 4.76 x 6.35mm stainless steel socket head cap screws (1)

Step 1 — Thermal Switch Mount Screws



- Remove the bottom grill plate by unlatching the grill clamps on the sides.
- Remove the Phillips head screws from the plate section with a # 1 Phillips head screw driver.
- Remove the two Phillips head screws from the bottom of the grill.

Step 2



- Slightly lift the silver plate from the grill base to reveal the interior wiring

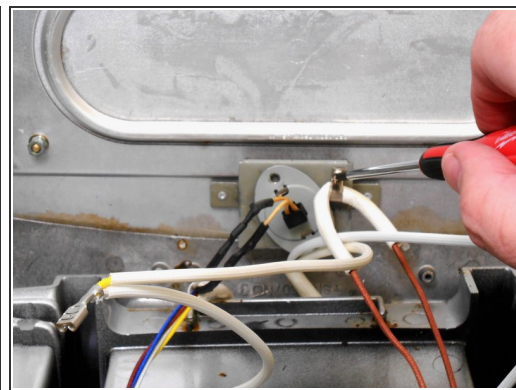
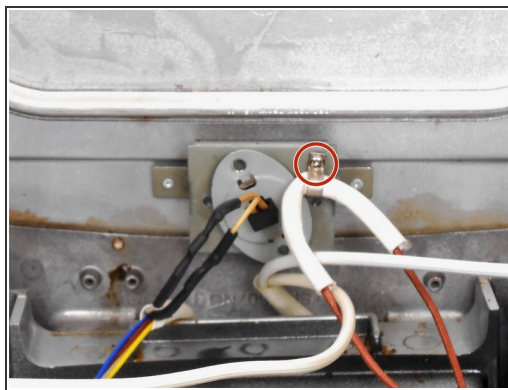
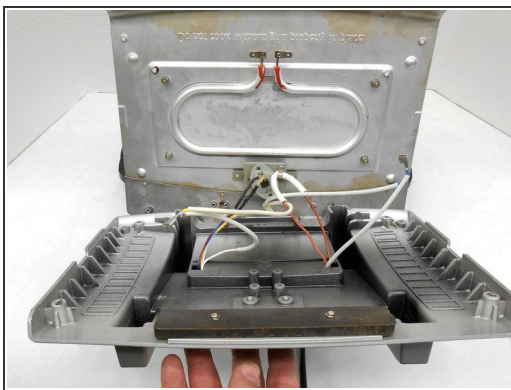
Step 3



- Reach inside the grill and disconnect the wires from the underside of the silver plate.

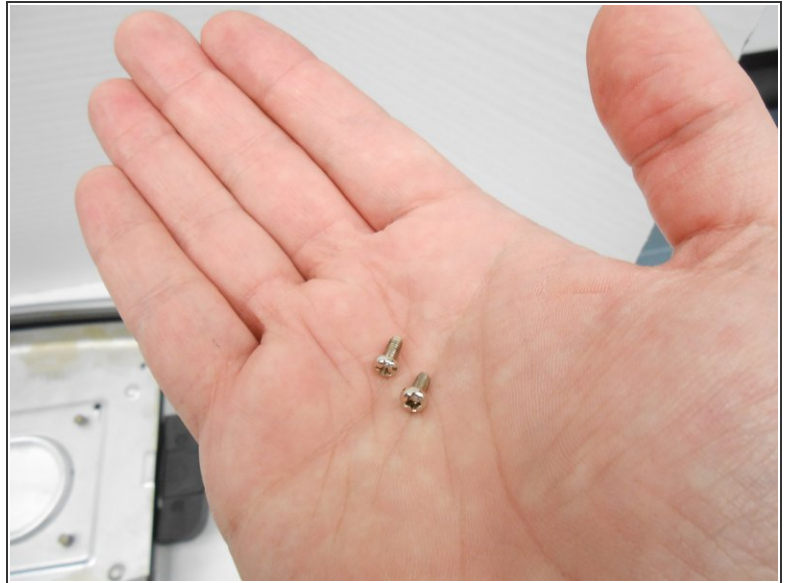
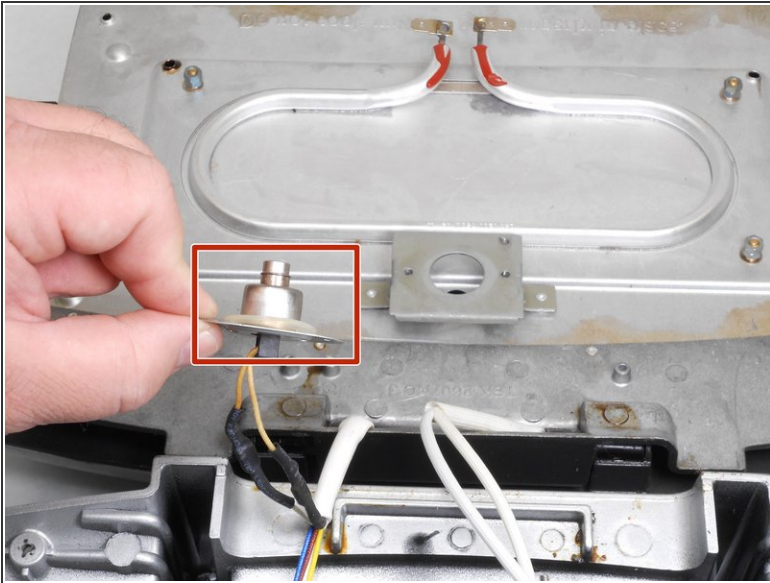
⚠ Carefully remove the wires so not to harm yourself or damage the wiring.

Step 4



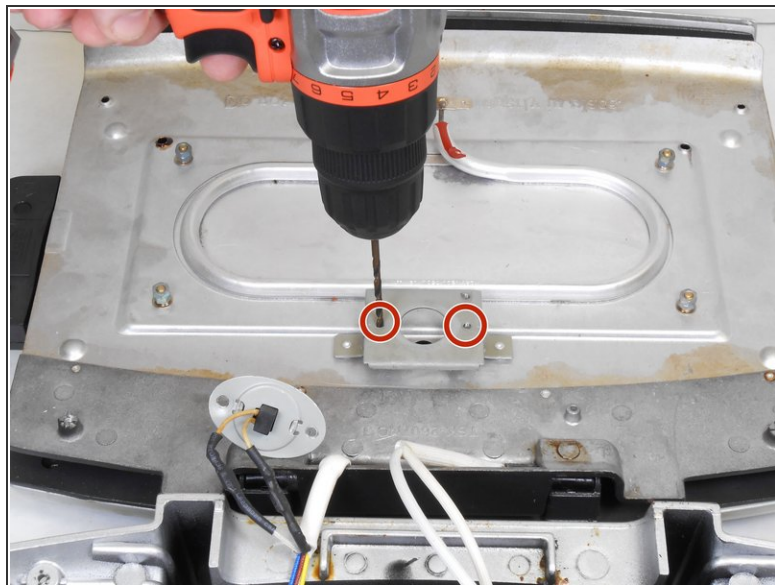
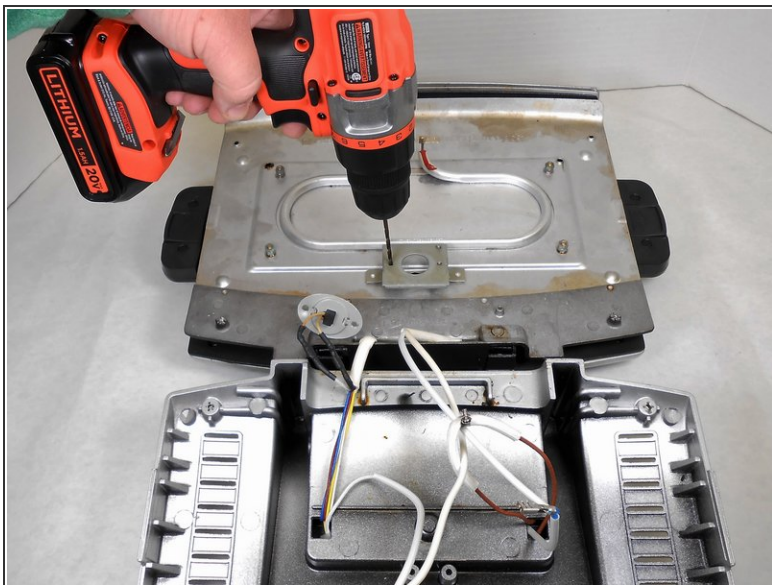
- Once the wires are disconnected, the grill can be opened more.
- Take the # 1 Phillips head screw driver to unscrew the wire clamp from the thermal switch mount.

Step 5




- Gently move the loose thermal switch away from the mount.
- Next remove the old mount screws from the inside of the grill.

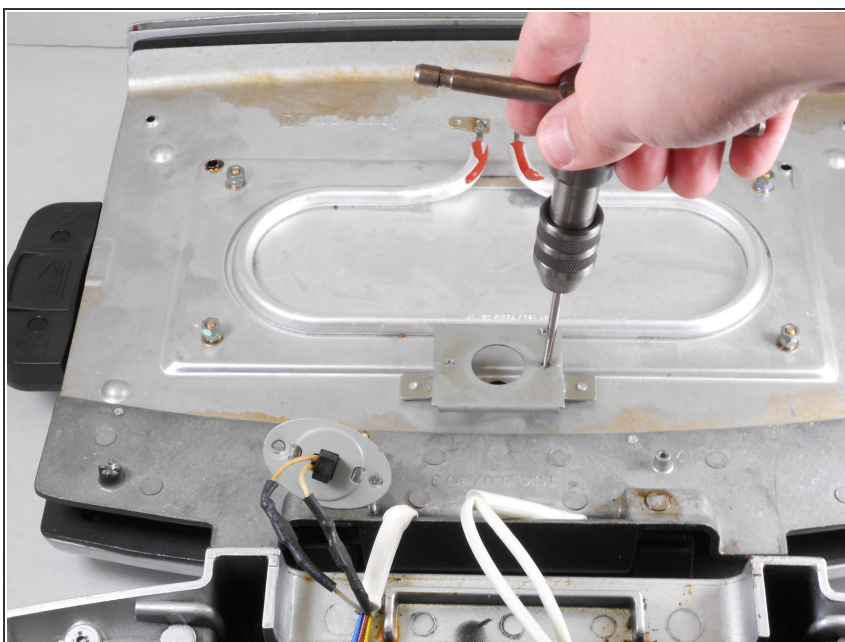
Step 6



- To correct the stripped threads, take a power drill with a 1/8 inch drill bit and drill the existing screw holes to resize for new screws.

 **Caution:** When drilling, secure the silver plate by holding it steady with your free hand to avoid injury.

Step 7



- Use a tap handle with a 6/32 inch size thread tap.
- Place the tap into the screw holes and rethread the holes by turning the tap handle in a clockwise direction.

Step 8



- Take the switch and align its screw holes with the holes on the plate.
- Add the two new 4.76 x 6.35mm screws to the holes.
- Take a 3/32 inch size Allen wrench to fasten the new screws.

To reassemble your device, follow these instructions in reverse order.