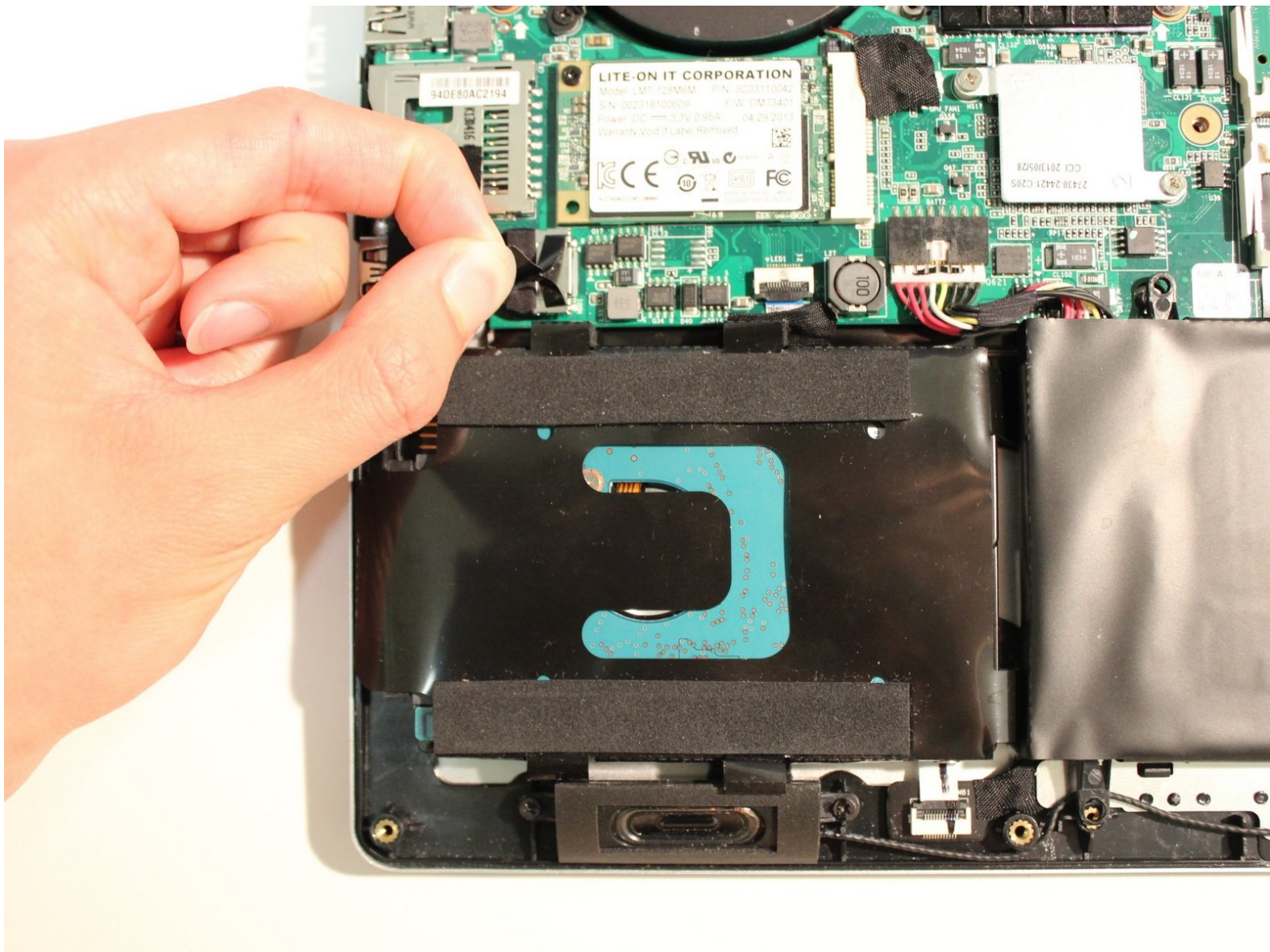




Gigabyte P34G Hard Drive Replacement

This guide will teach you how to open up the P34G and replace the hard drive.

Written By: yeunghayden



INTRODUCTION

The hard drive stores some of the computer's files and has limited space. Replacement of the hard drive is necessary if it is broken or there is no space left.

Make sure you are grounded before starting. To ground yourself, simply touch a metal object that is in contact with the floor for a few seconds.



TOOLS:

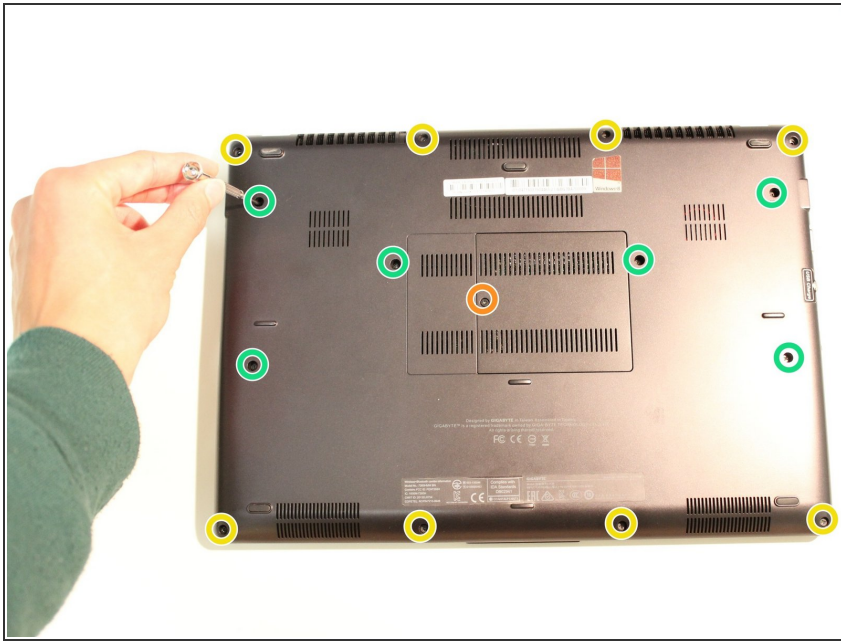
- [Phillips #0 Screwdriver](#) (1)



PARTS:

- [Compatible Internal Notebook Hard Drive Bare Drive](#) (1)

Step 1 — Hard Drive



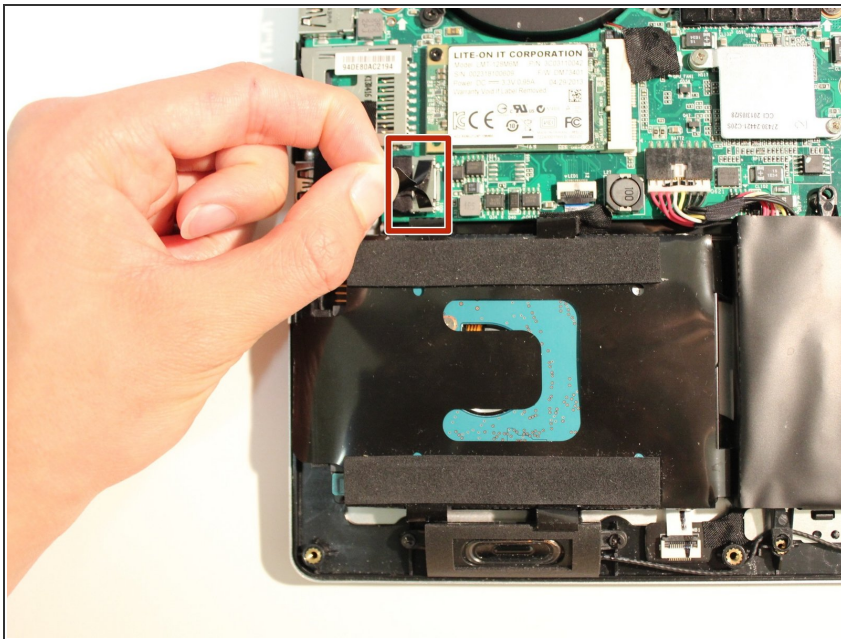
- Remove all 15 marked screws on the underside of the laptop using a #0 screwdriver.

i There are three different sized screws.

- x1 9.8mm Screw
- x8 5.6mm Screws
- x6 5.0mm Screws

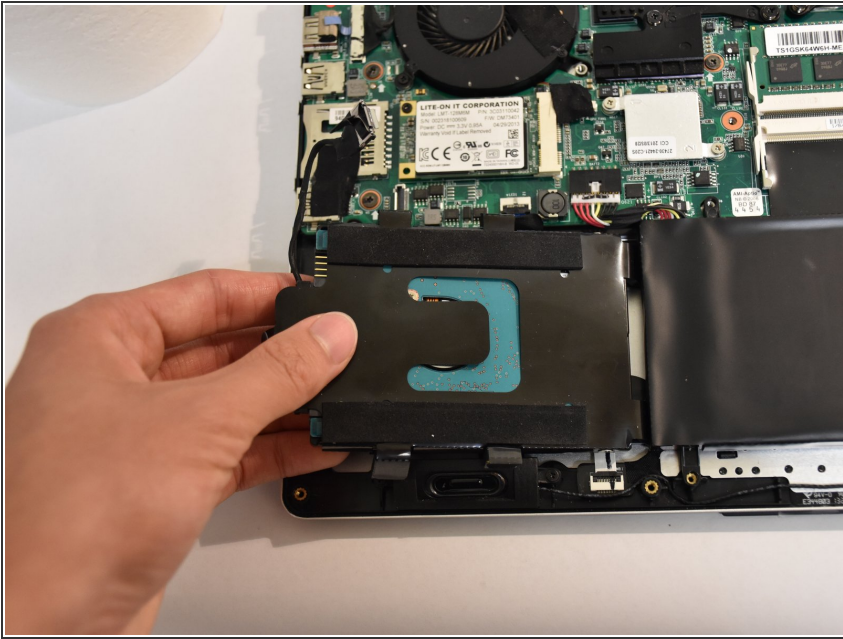
★ Divide the screws by size and save them in a safe space for reassembly later.

Step 2



- Pull the marked tab straight up away from the board to disconnect the hard drive from the board.

Step 3



- Carefully lift the hard drive for removal.

To reassemble your device, follow these instructions in reverse order.