



# Gigabyte P34G Wireless Card Replacement

This guide will teach you how to open up the P34G and replace the wireless card.

Written By: yeunghayden



## INTRODUCTION

The wireless card allows the computer to connect to the internet or another device through Wi-Fi. Some wireless cards may also have a Bluetooth adapter.

Make sure you are grounded before starting. To ground yourself, simply touch a metal object that is in contact with the floor for a few seconds.



### TOOLS:

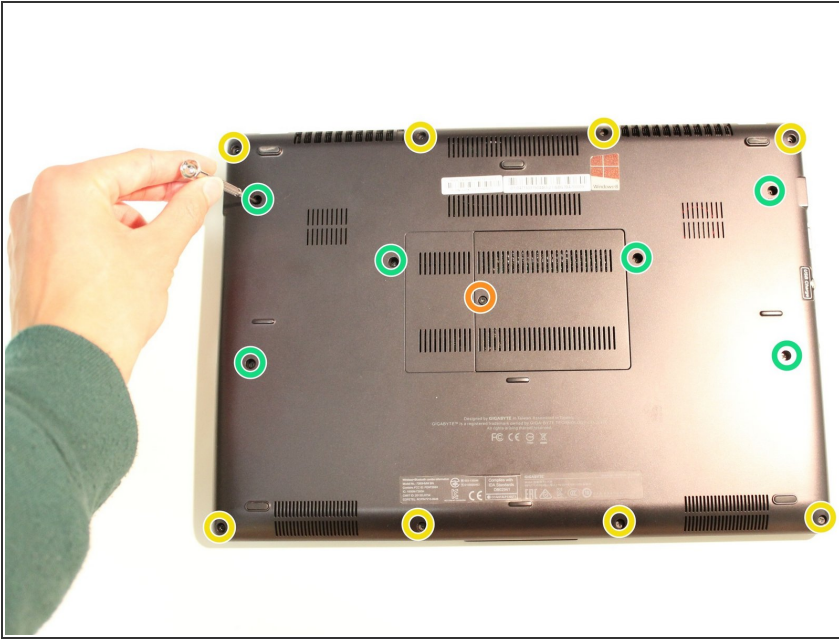
- [Phillips #0 Screwdriver](#) (1)



### PARTS:

- [Compatible Laptop Wireless Card](#) (1)

## Step 1 — Wireless Card



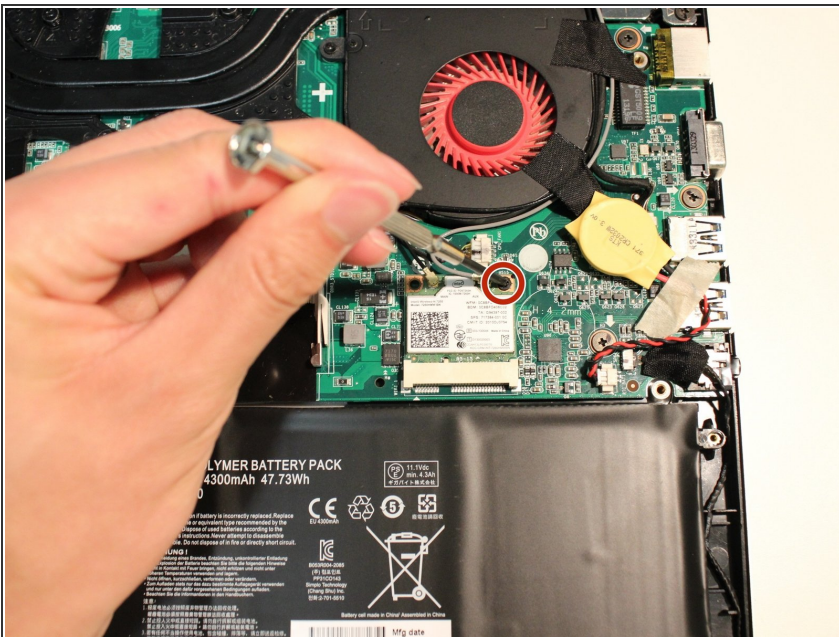
- Remove all 15 marked screws on the underside of the laptop using a #0 screwdriver.

**i** There are three different sized screws.

- x1 9.8mm Screw
- x8 5.6mm Screws
- x6 5.0mm Screws

**★** Divide the screws by size and save them in a safe space for reassembly later.

## Step 2



- Remove the screw attaching the wireless card to the motherboard.

**★** Save the screw in a safe place for reassembly later.



## Step 3



- Remove the black and grey wires that are connected to the wireless card by pulling away from the card.

## Step 4



- Carefully pull the wireless card out.

To reassemble your device, follow these instructions in reverse order.