



GoPro HD Hero2 Front Case Replacement

GoPro HD Hero2 front case replacement.

Written By: David Hodson



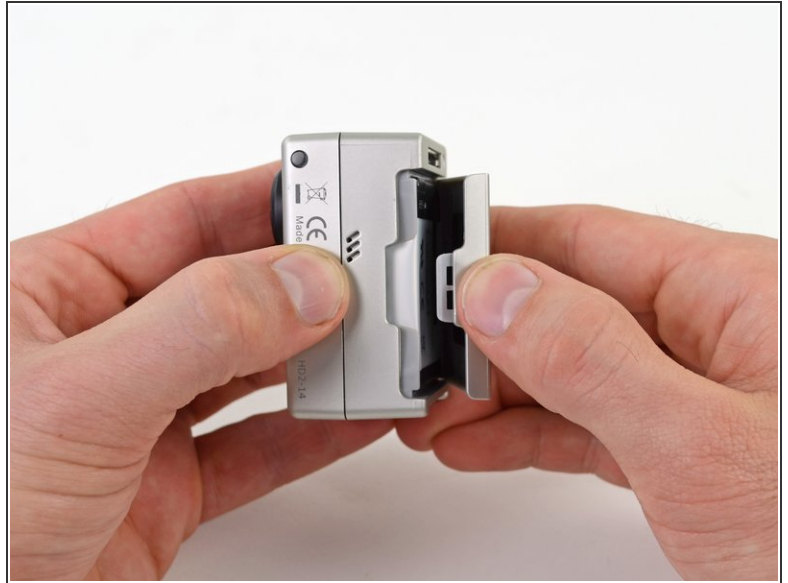
INTRODUCTION

The front case of your GoPro is constantly being subjected to potentially dangerous obstacles: trees, bears, viking ships, and who knows what else. Should you happen to crack or break the front case, you can replace it with a brand new one.

TOOLS:

- [Tweezers](#) (1)
 - [Phillips #0 Screwdriver](#) (1)
 - [Phillips #00 Screwdriver](#) (1)
 - [iFixit Opening Tools](#) (1)
 - [Spudger](#) (1)
-

Step 1 — Back Cover



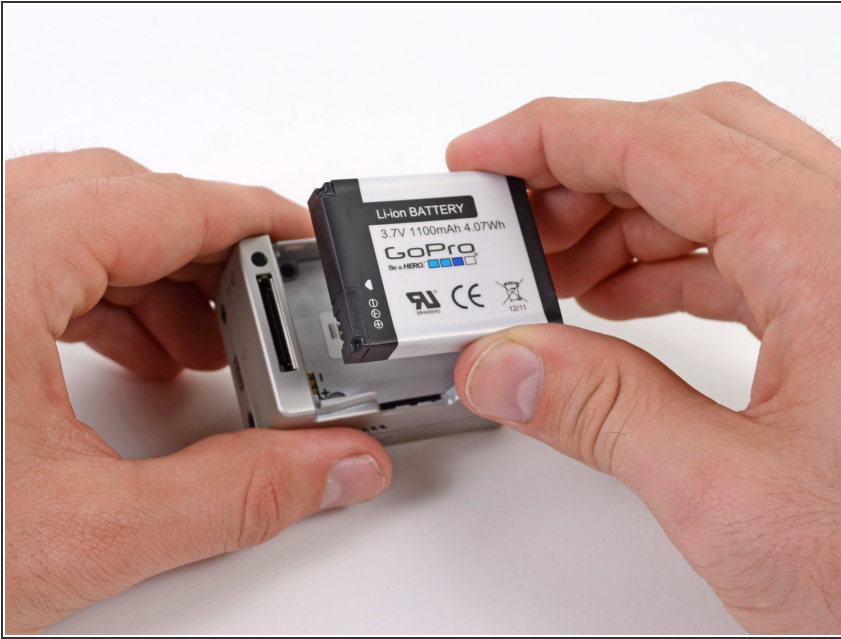
- Place your thumb on the indentation in the back case on the side of the GoPro.
- Gently press down with your thumb and lift the back cover away from the case to remove it.

Step 2 — Battery



- Slide a plastic opening tool between the battery and the rear case.
- Gently pry the battery up and out of the rear case.

Step 3



- Remove the battery from the case.

Step 4 — Rear Case



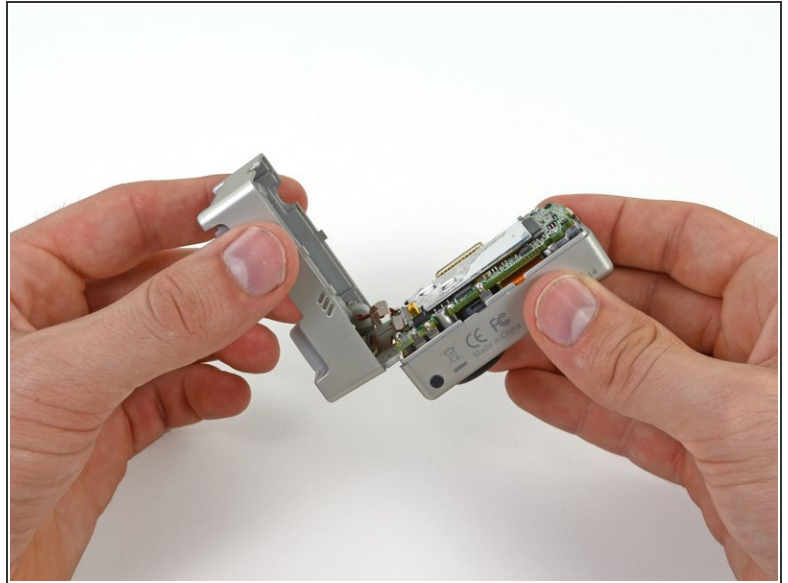
- Remove the four Phillips #00 screws securing the rear case to the rest of the device:
 - Two 5.5 mm coarse thread screws.
 - Two 4.4 mm fine thread screws.

Step 5




- Slide the edge of a plastic opening tool underneath the sticker on the rear cover and gently peel the sticker up.
- Once you have enough of the sticker peeled up with the plastic opening tool, grab an edge of it with your fingers and pull it off completely.

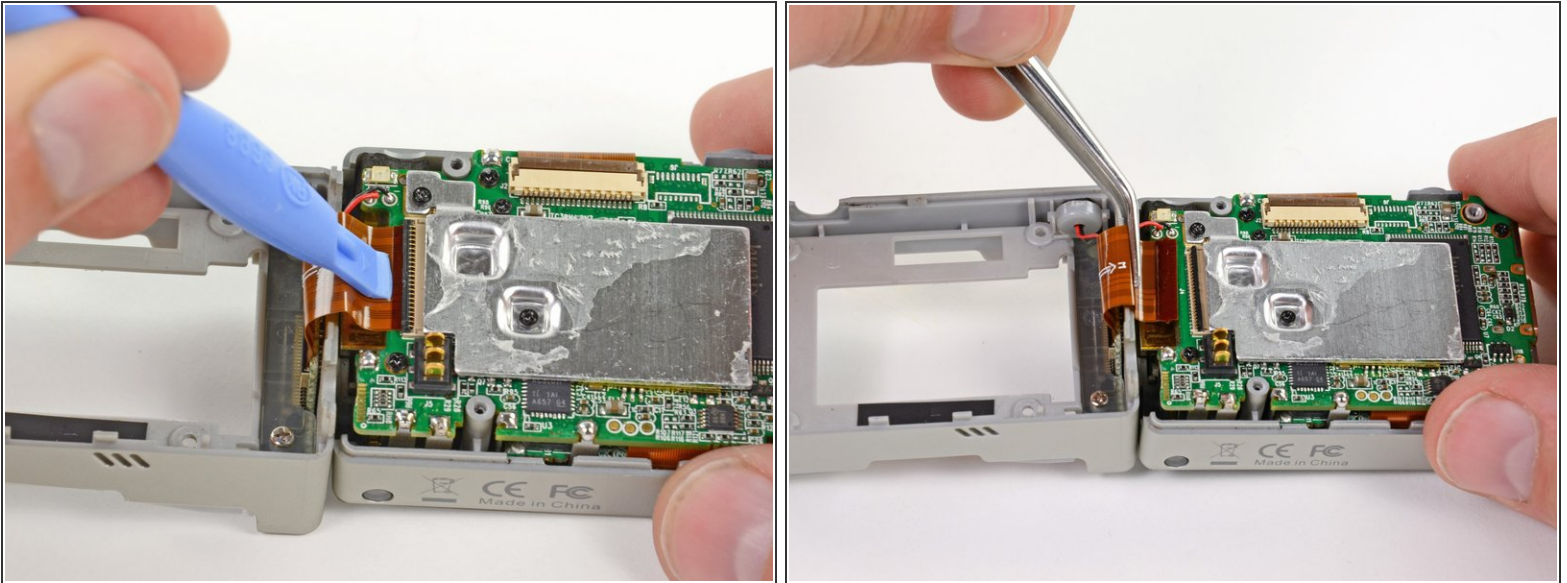
Step 6




- Grasp the rear case and lift it off of the front case.

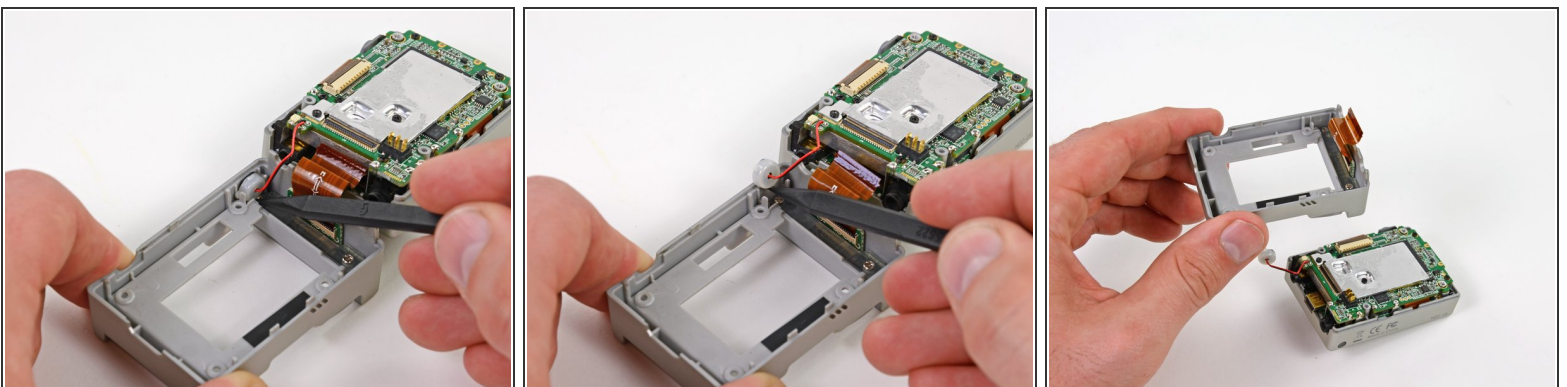
 Do not try to completely remove the rear case yet, as it is still attached by the display port ribbon cable.

Step 7



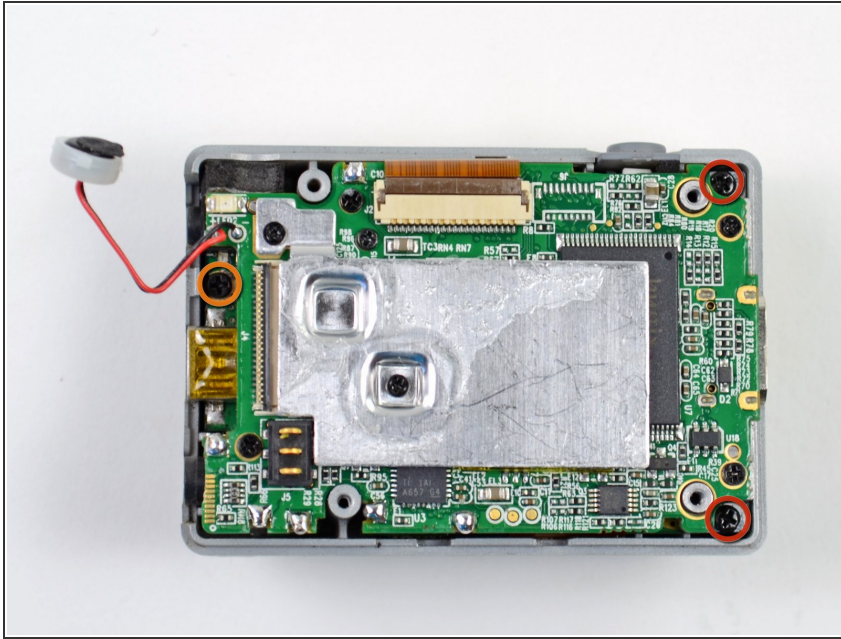
- Using a plastic opening tool or your fingernail, flip up the locking tab on the SD board ribbon cable ZIF connector on the motherboard assembly.
 Be careful that you are prying on the locking tab, and not the connector itself.
- Use a pair of tweezers to remove the SD board ribbon cable from its connector on the motherboard.

Step 8



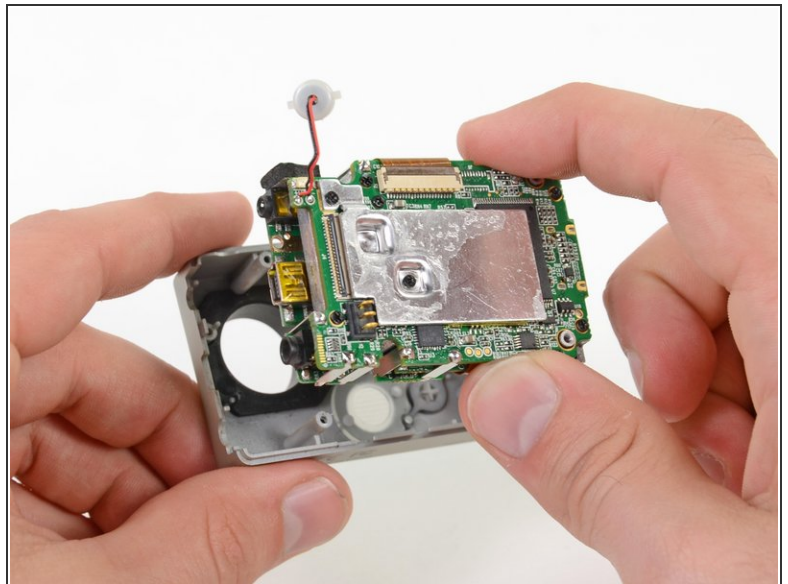
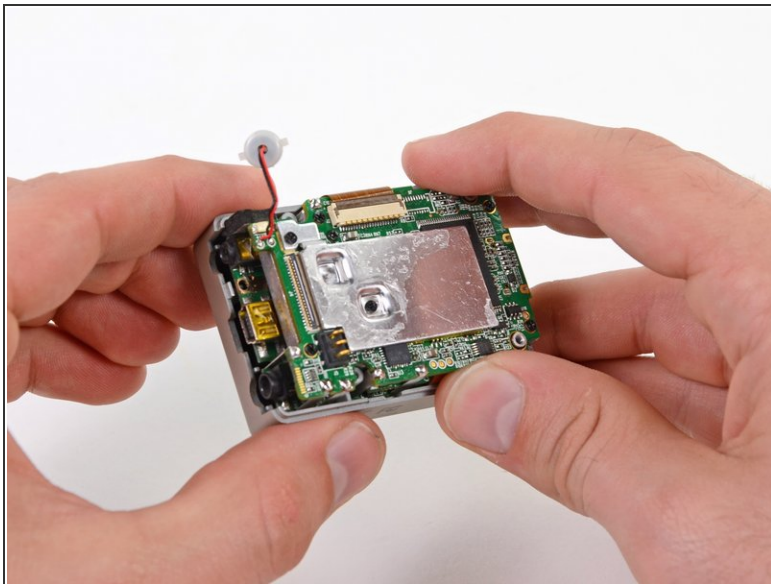
- Lift the speaker out of the rear case with the tip of a spudger.
- Remove the rear case.

Step 9 — Motherboard Assembly



- Remove the three screws securing the motherboard assembly to the front case:
 - Two 10.8 mm Phillips #00 screws.
 - One 4.8 mm Phillips #00 screw.

Step 10



- Gently grab the edges of the motherboard assembly and lift it out of the front case.

Step 11 — Front Case



- The front case remains.

To reassemble your device, follow these instructions in reverse order.