



GoPro HD Hero2 LCD Replacement

GoPro HD Hero2 LCD replacement.

Written By: David Hodson



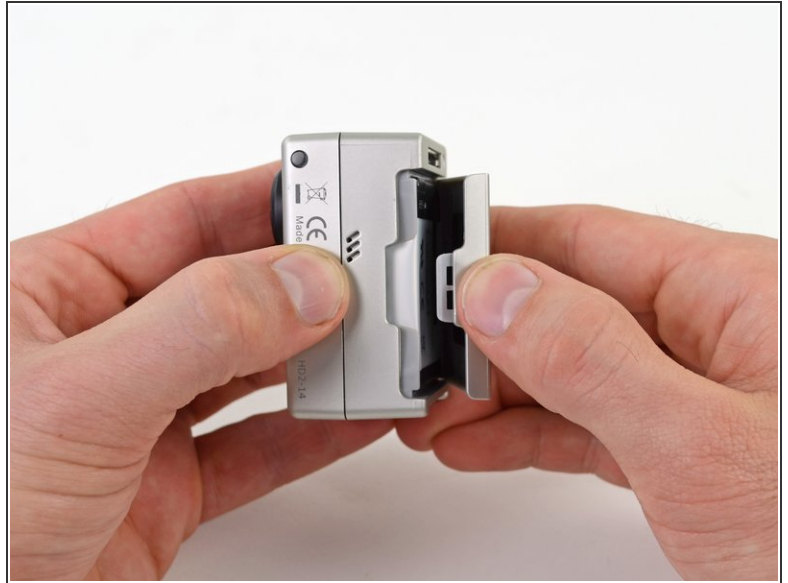
INTRODUCTION

If you can't figure out how to use your GoPro, chances are you either need to read the manual or the LCD is broken. In the case of the latter, this guide will help you install a new display.

TOOLS:

- [Tweezers](#) (1)
 - [Phillips #0 Screwdriver](#) (1)
 - [Phillips #00 Screwdriver](#) (1)
 - [iFixit Opening Tools](#) (1)
 - [Spudger](#) (1)
-

Step 1 — Back Cover



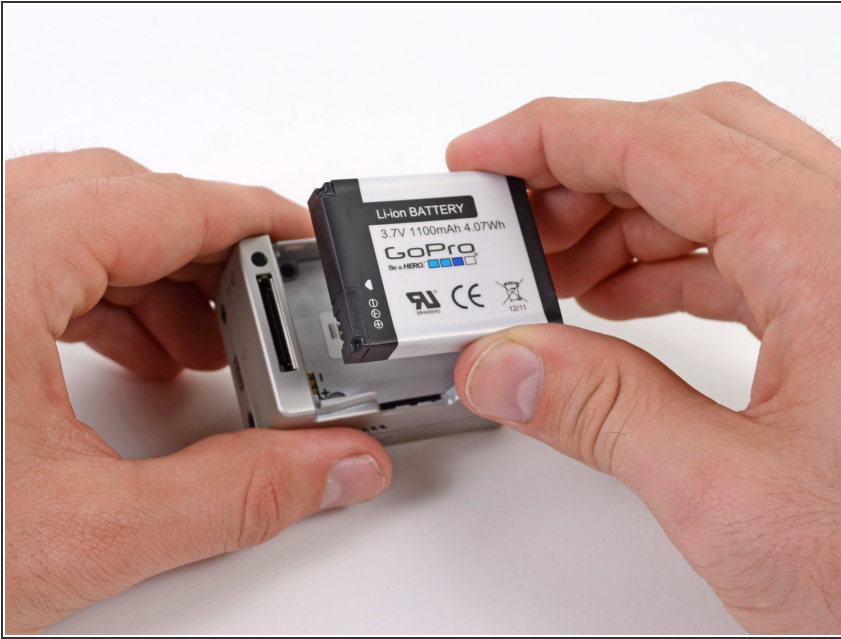
- Place your thumb on the indentation in the back case on the side of the GoPro.
- Gently press down with your thumb and lift the back cover away from the case to remove it.

Step 2 — Battery



- Slide a plastic opening tool between the battery and the rear case.
- Gently pry the battery up and out of the rear case.

Step 3



- Remove the battery from the case.

Step 4 — Rear Case



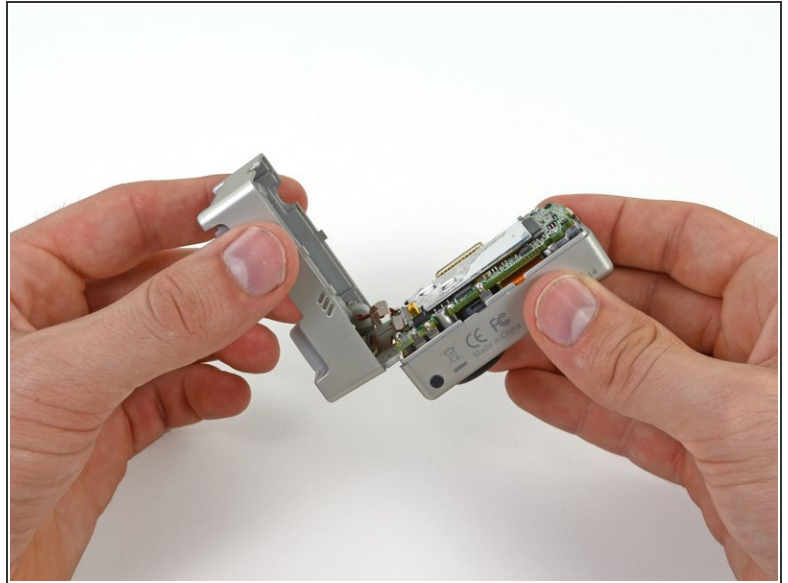
- Remove the four Phillips #00 screws securing the rear case to the rest of the device:
 - Two 5.5 mm coarse thread screws.
 - Two 4.4 mm fine thread screws.

Step 5




- Slide the edge of a plastic opening tool underneath the sticker on the rear cover and gently peel the sticker up.
- Once you have enough of the sticker peeled up with the plastic opening tool, grab an edge of it with your fingers and pull it off completely.

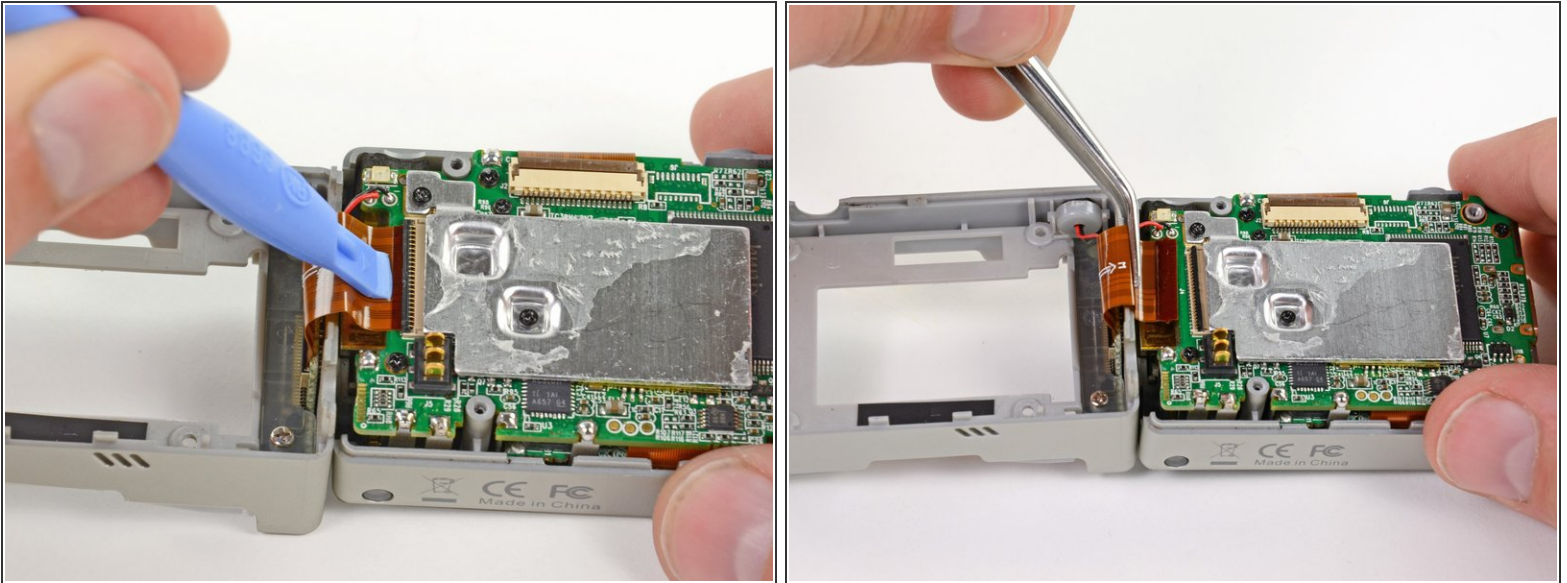
Step 6




- Grasp the rear case and lift it off of the front case.

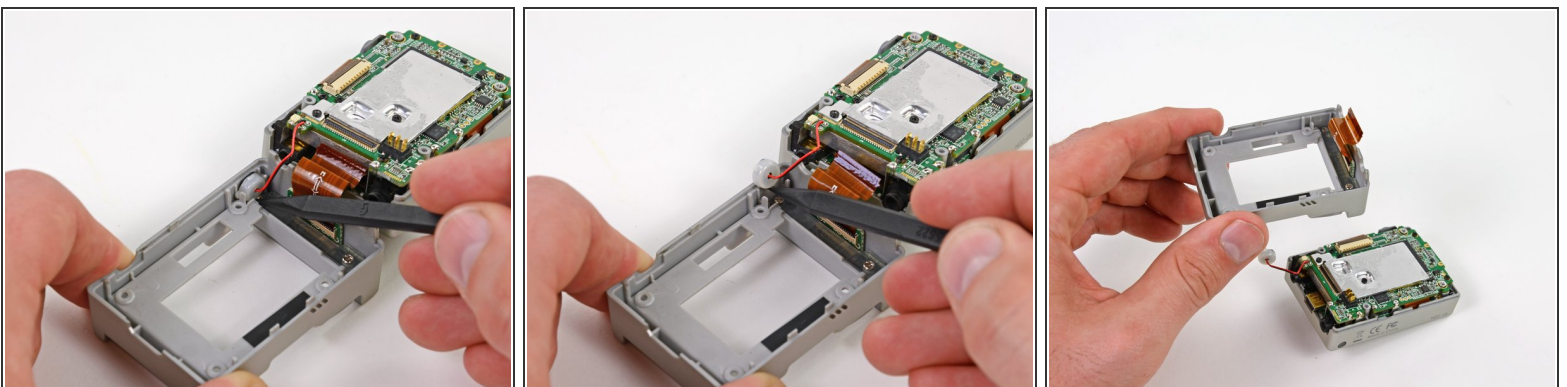
 Do not try to completely remove the rear case yet, as it is still attached by the display port ribbon cable.

Step 7



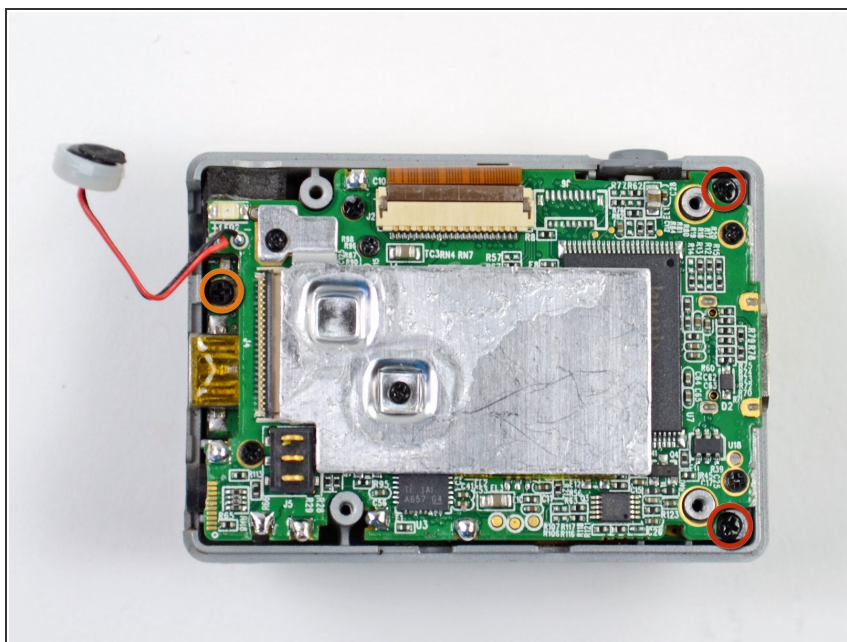
- Using a plastic opening tool or your fingernail, flip up the locking tab on the SD board ribbon cable ZIF connector on the motherboard assembly.
 Be careful that you are prying on the locking tab, and not the connector itself.
- Use a pair of tweezers to remove the SD board ribbon cable from its connector on the motherboard.

Step 8



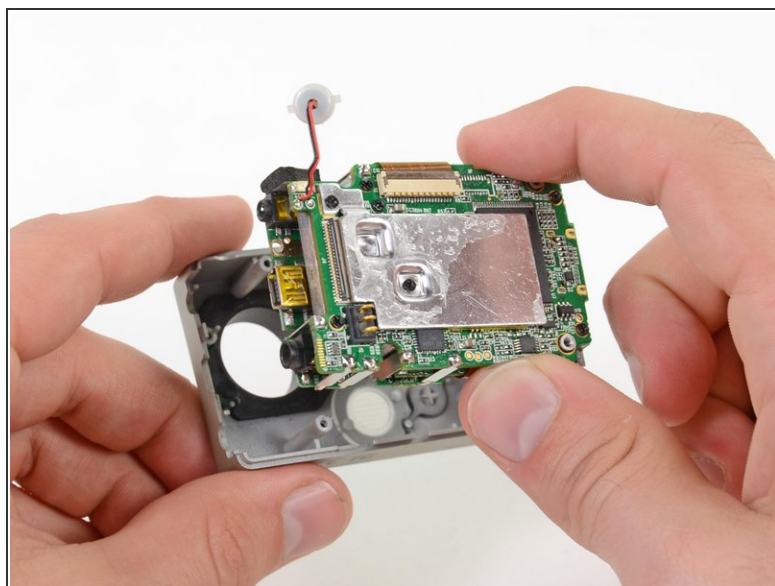
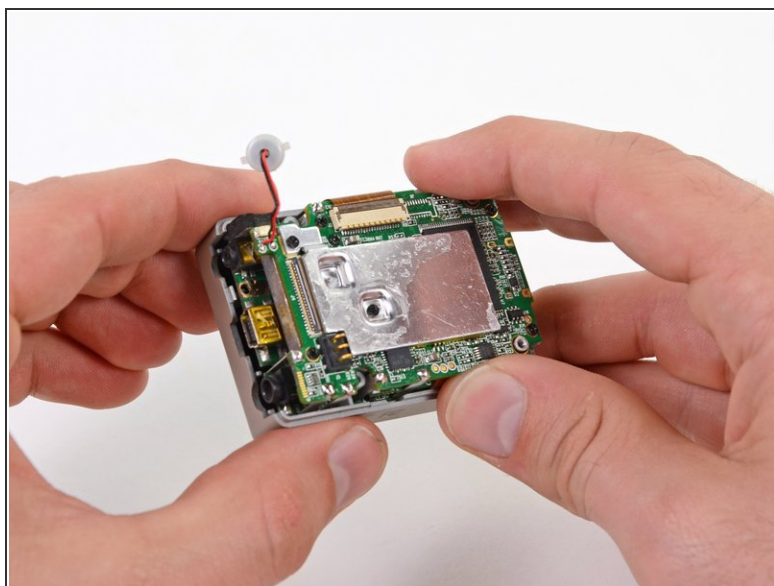
- Lift the speaker out of the rear case with the tip of a spudger.
- Remove the rear case.

Step 9 — Motherboard Assembly



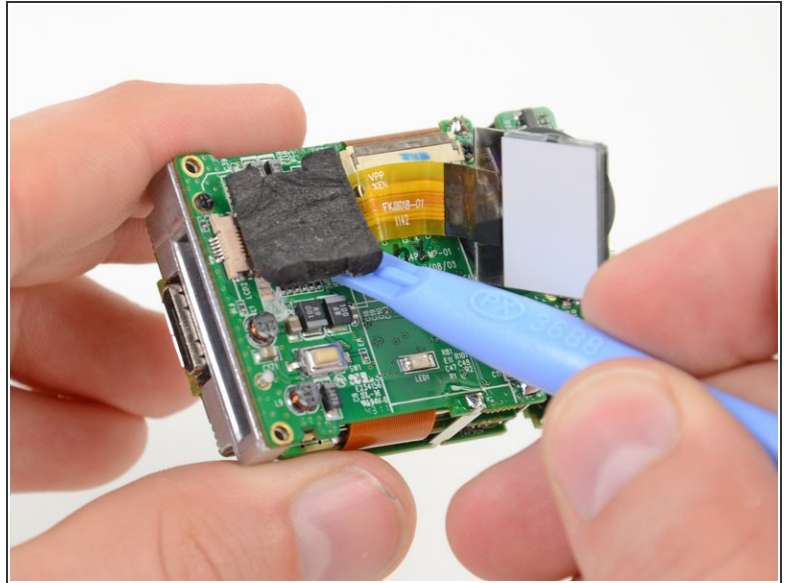
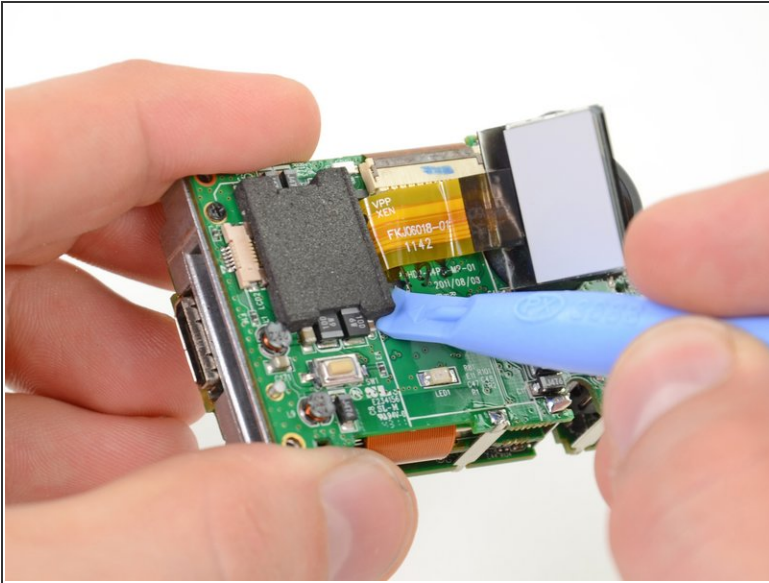
- Remove the three screws securing the motherboard assembly to the front case:
 - Two 10.8 mm Phillips #00 screws.
 - One 4.8 mm Phillips #00 screw.

Step 10



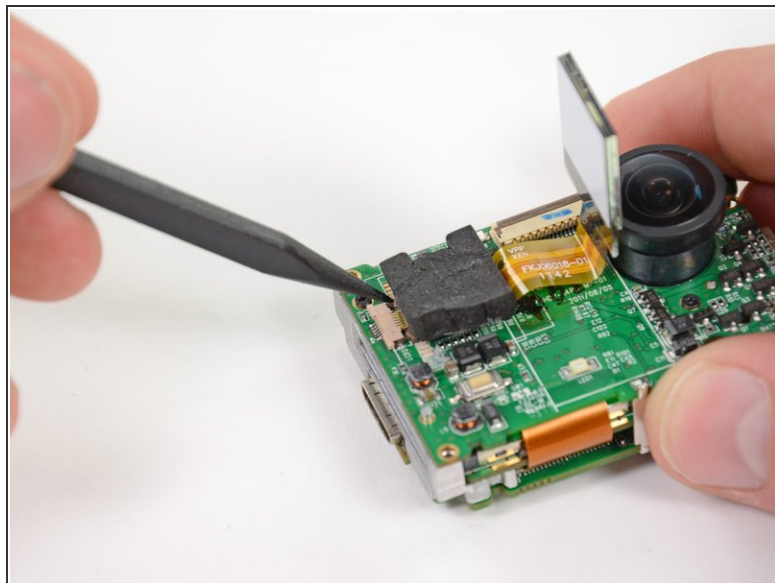
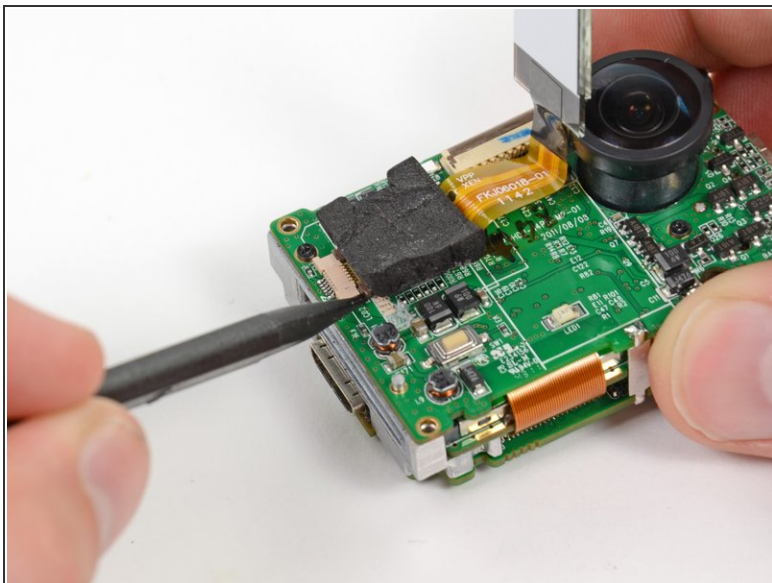
- Gently grab the edges of the motherboard assembly and lift it out of the front case.

Step 11 — LCD



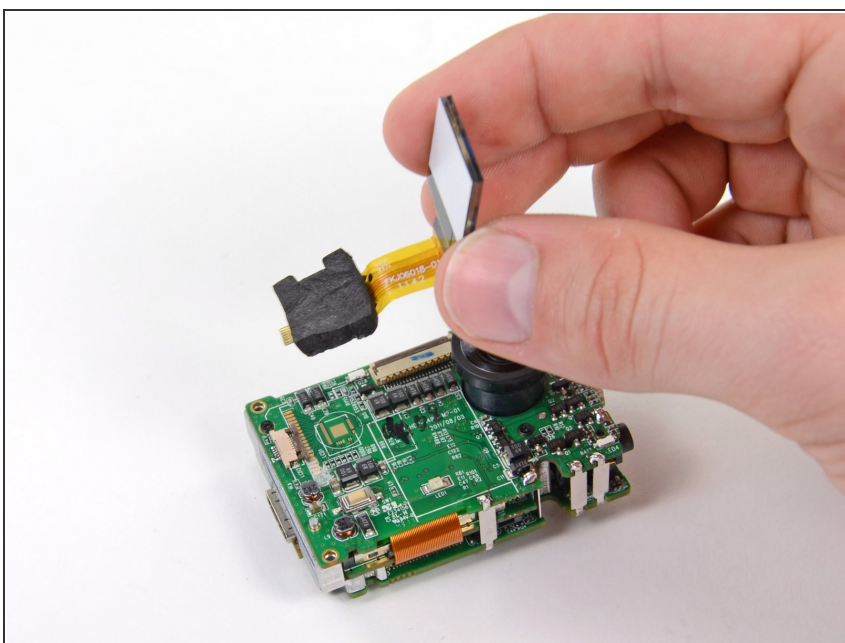
- ⓘ Turn the motherboard assembly over to the side with the LCD and the camera lens.
 - Gently wedge a plastic opening tool underneath the foam padding on top of the LCD ribbon cable.
 - Pry the foam padding up until the LCD ribbon cable can be lifted off the surface of the motherboard.
- ⚠ Do not try to remove the LCD yet, as its ribbon cable is still connected to the motherboard via a ZIF connector.

Step 12



- Use the tip of a spudger to release the two outer tabs of the LCD ribbon cable ZIF connector.
- Alternate pressing on both tabs until the connector is completely unfastened.

Step 13



- Once its ribbon cable is free, remove the LCD from the motherboard assembly.

To reassemble your device, follow these instructions in reverse order.