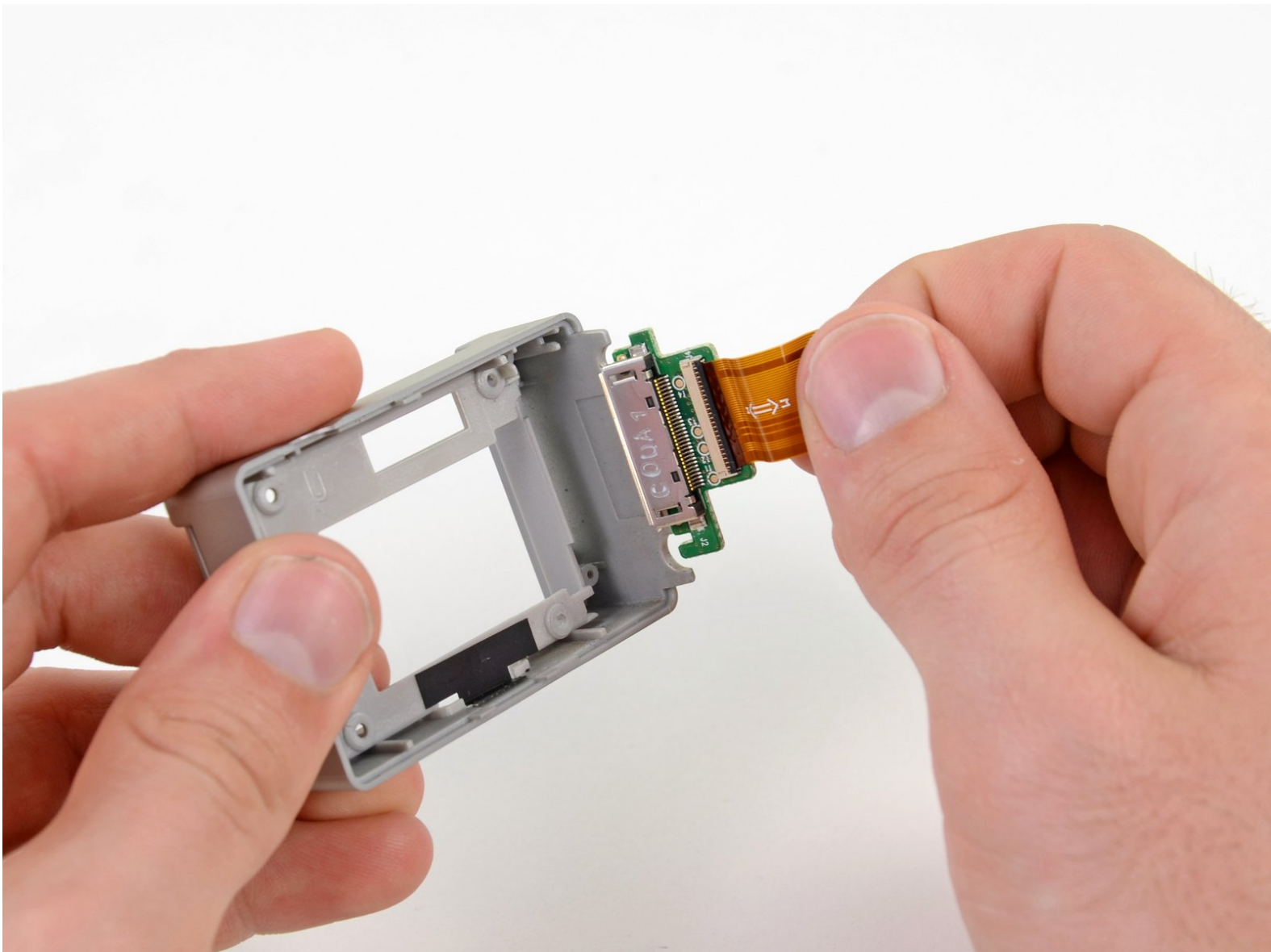




GoPro HD Hero2 SD Board Replacement

GoPro HD Hero2 SD board prerequisite.

Written By: David Hodson



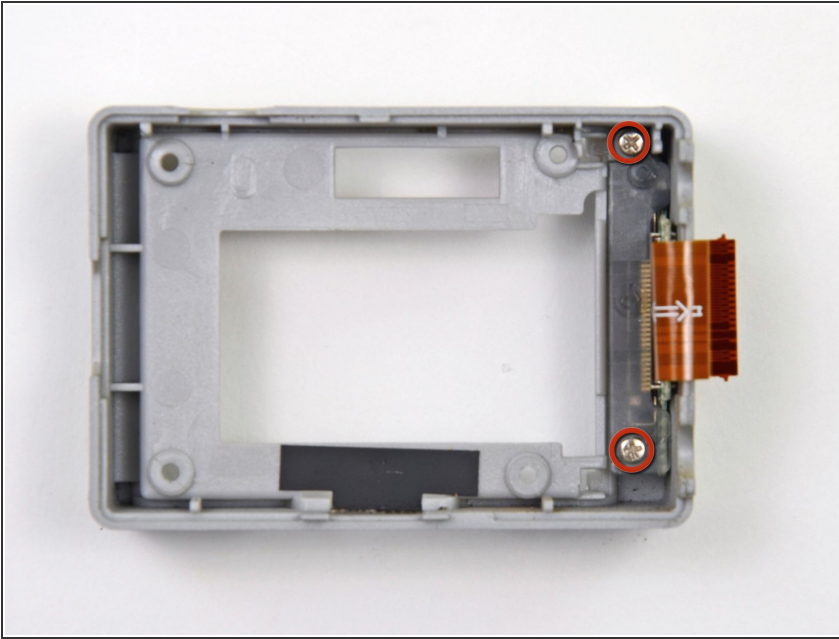
INTRODUCTION

This guide is a prerequisite to removing the rear case and the SD board.

TOOLS:

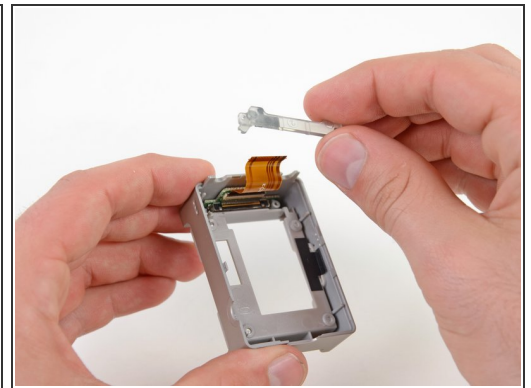
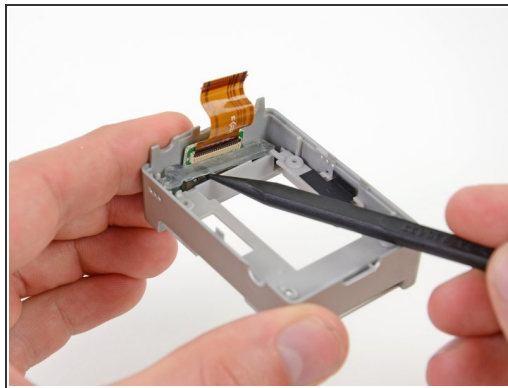
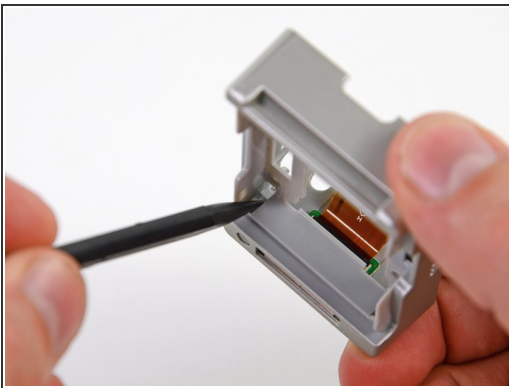
- [Tweezers](#) (1)
 - [Phillips #00 Screwdriver](#) (1)
 - [iFixit Opening Tools](#) (1)
 - [Spudger](#) (1)
-

Step 1 — SD Board



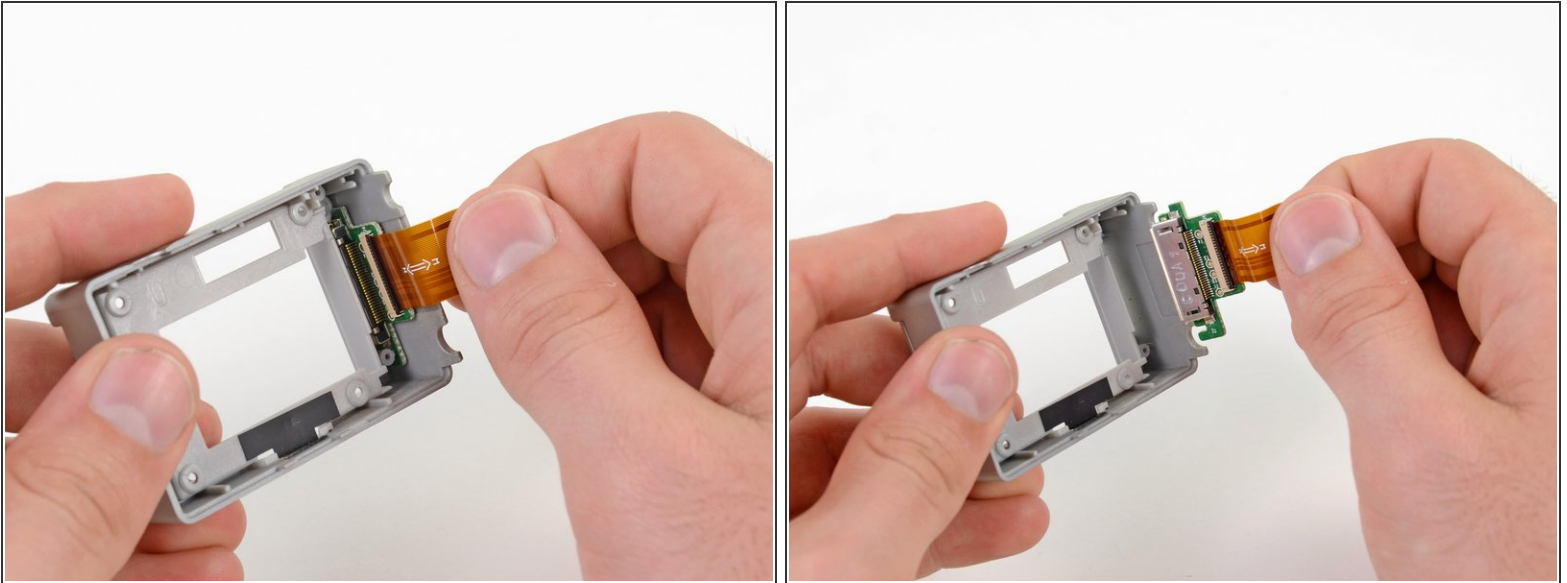
- Remove the two 5.8 mm Phillips #00 screws securing the SD board cover to the rear case.

Step 2



- ① Turn the rear case over so that the SD card slot is facing you.
 - Use the tip of a spudger to push the bottom of the SD board cover up and out of the rear case.
 - Turn the rear case back over.
 - Lift the SD board cover out of the rear case with the tip of a spudger and remove it.

Step 3



- Grasp the SD board ribbon cable gently and pull the SD board out of the rear case.

To reassemble your device, follow these instructions in reverse order.