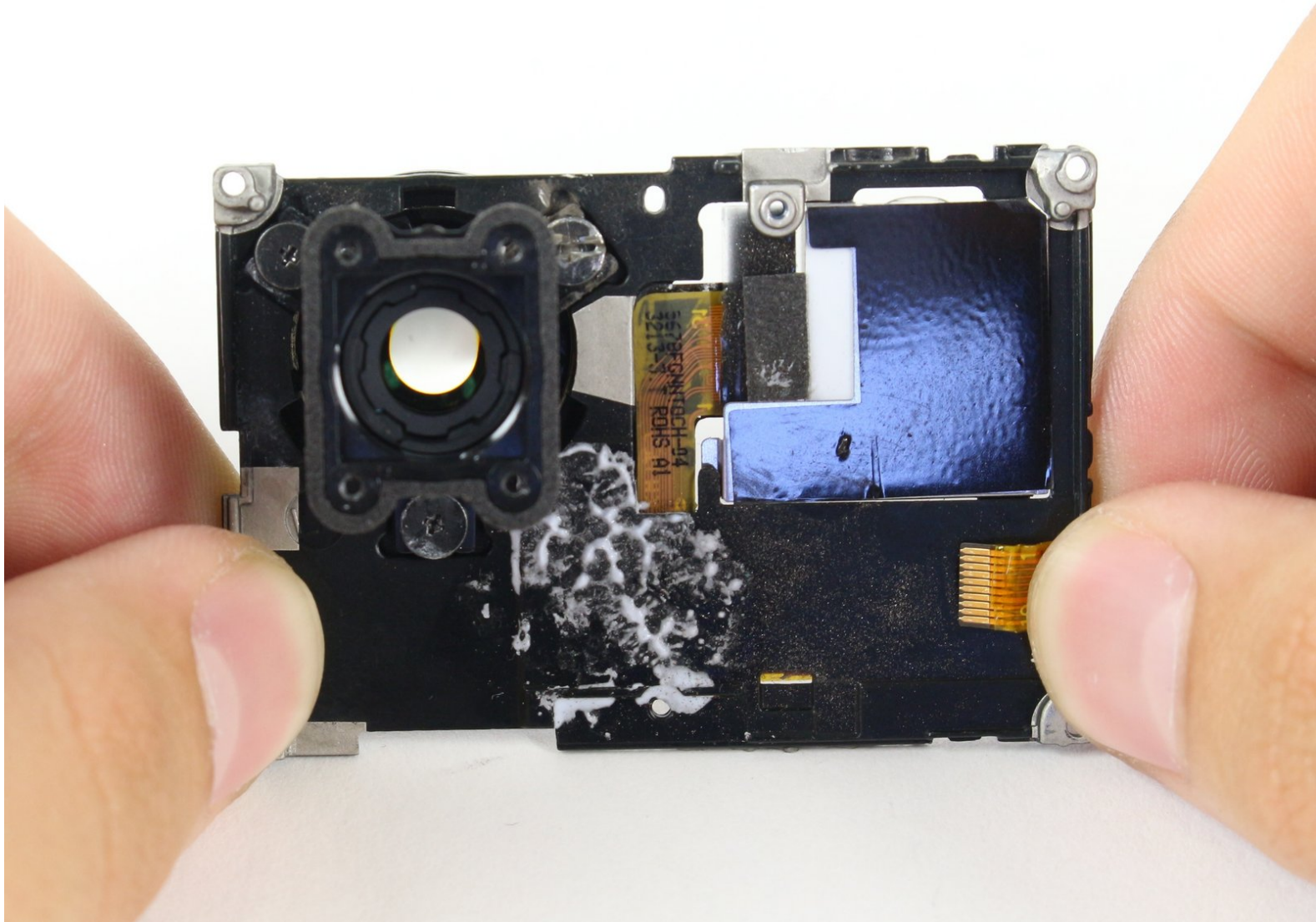




GoPro Hero 3 Silver LCD Housing Replacement

This will guide will explain how you can replace your GoPro's LCD Housing.

Written By: Brian Alvarez



INTRODUCTION

Use this guide to replace the LCD housing on your GoPro Hero3 Silver.



TOOLS:

- [T4 Torx Screwdriver](#) (1)
- [Phillips #00 Screwdriver](#) (1)
- [Spudger](#) (1)
- [iFixit Opening Tools](#) (1)



PARTS:

- [GoPro Hero3 Silver LCD Assembly](#) (1)
- [GoPro Hero3 Silver Front Panel](#) (1)

Step 1 — Battery



- Pull back on the tab on the back of GoPro to open the battery cover.

Step 2



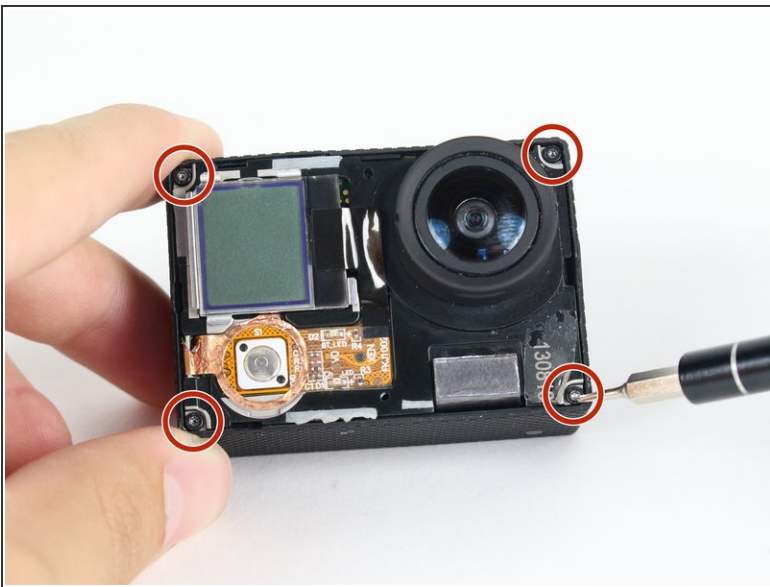
- Pull the battery out using the tab.

Step 3 — LCD Housing



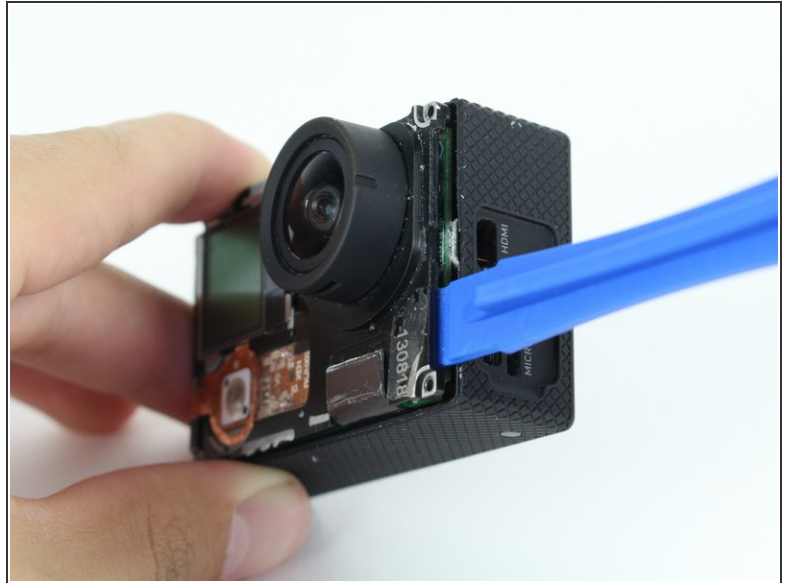
- Use the plastic opening tool to remove the faceplate.
- There is some adhesive and clips so be careful and the faceplate should pop right off.

Step 4



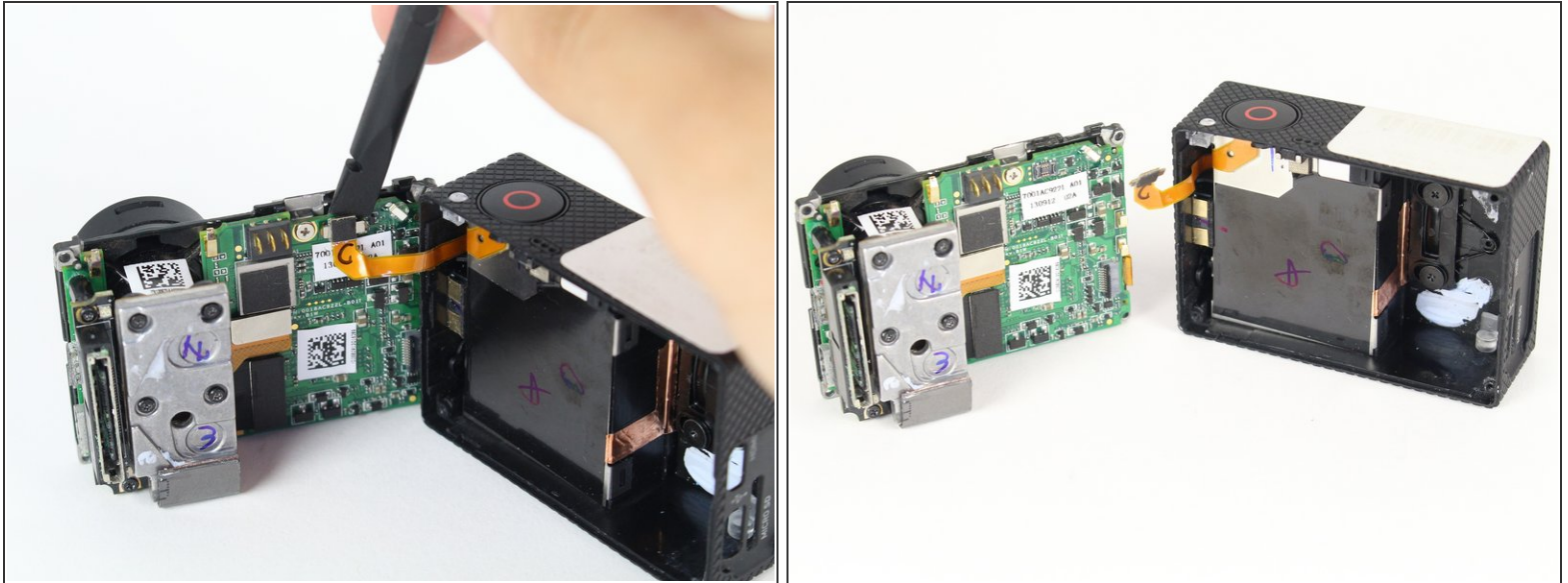
- Now that the faceplate is off, it is time to remove the 4 screws on each corner.
- Use the T4 tool bit from the iFixit toolkit in order to remove the 4 screws on each corner.

Step 5



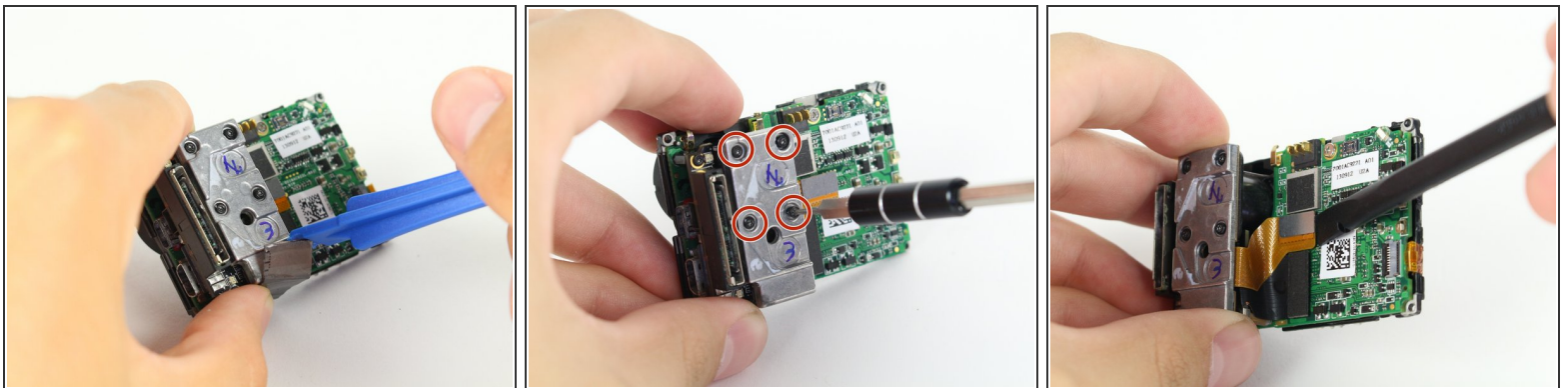
- Note: Make sure you remove the door cover of the USB, mini HDMI, and SD port before. Separating the motherboard will be easier.
- Using the plastic opening tool, slowly pry open the motherboard assembly.

Step 6



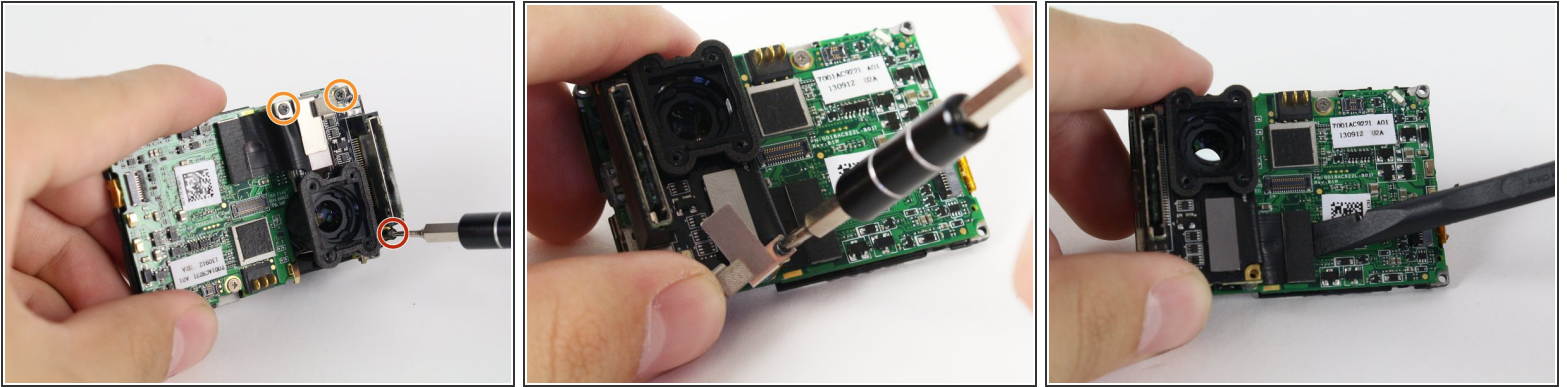
- Use the spudger to gently pry off the connector of the housing to the motherboard.
- You should now have the motherboard assembly and the housing separated.

Step 7



- Use the spudger to remove the heat shield tape and detach the image sensor from the motherboard.
- Using the T4 Torx toolbit, remove the 4 screws that connect the sensor to the lens.
- Remove the silver connector of the image sensor from the motherboard using the spudger to pry it off.

Step 8



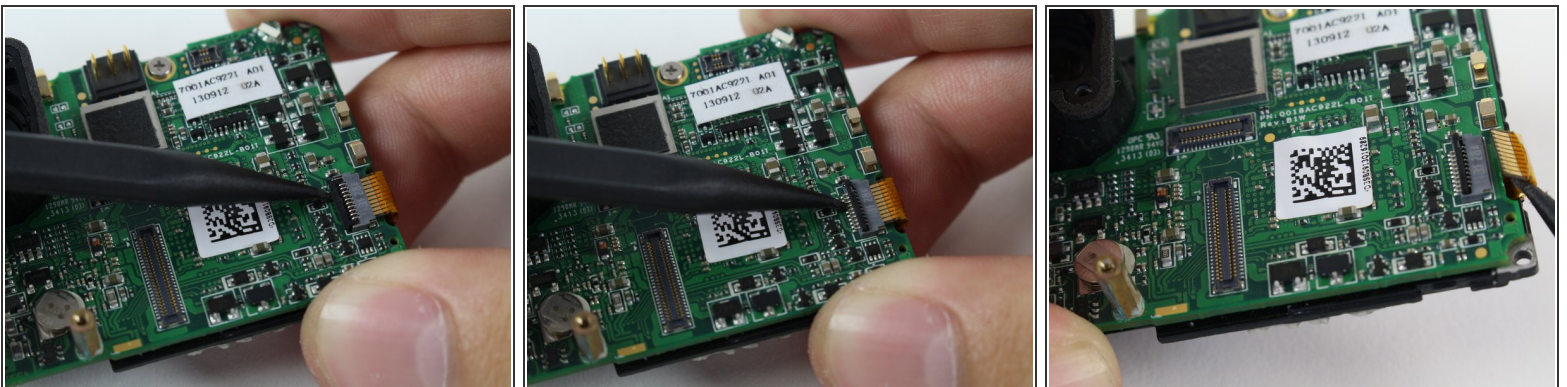
- The media adapter is attached to the motherboard via 3 screws:

- x1 T4 Torx
- x2 Phillips #00

⚠ There's a little silver bracket that is held down by the Phillips #00 screw so be careful not to lose it.

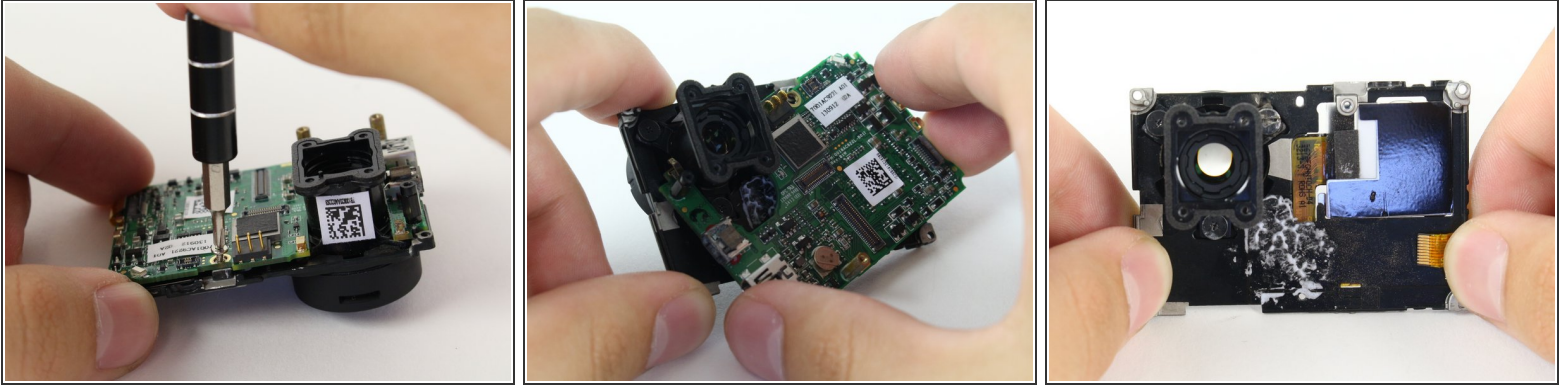
- With a little prying, use the spudger to detach the media adapter's connector from the motherboard.

Step 9



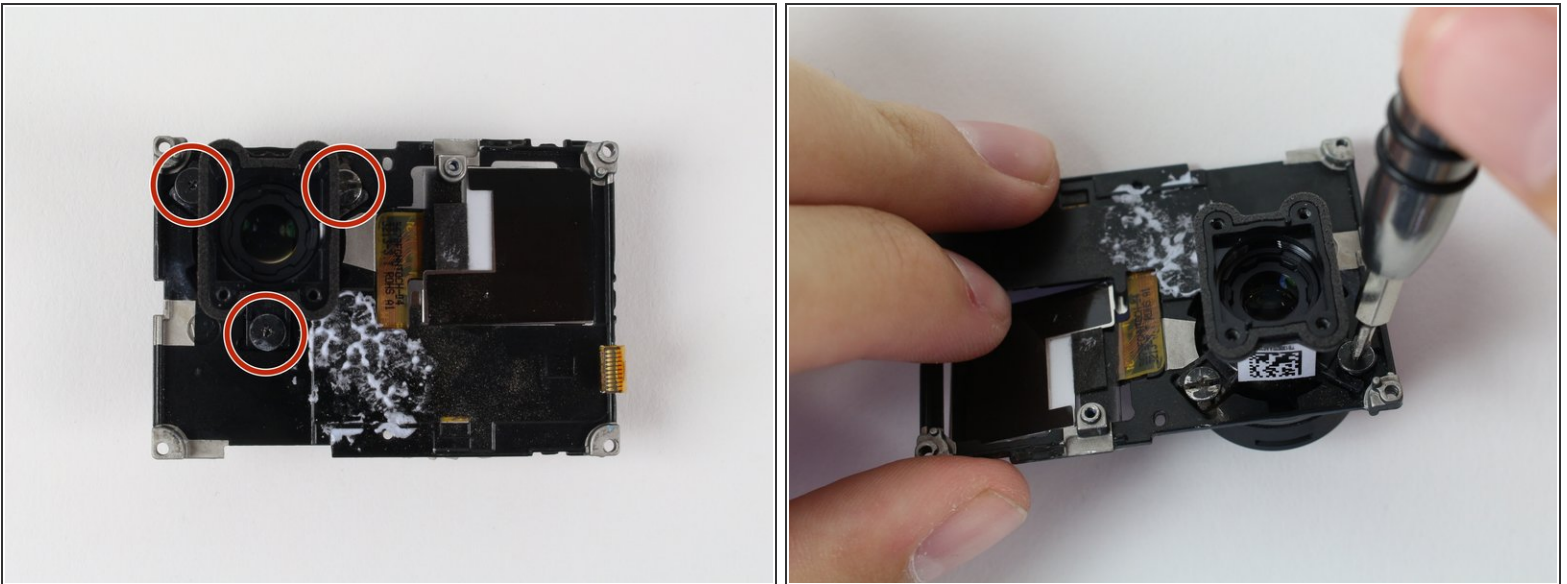
- Use the spudger to lift the black tab up to unlock.
- Then remove LCD screen connector by sliding out.

Step 10



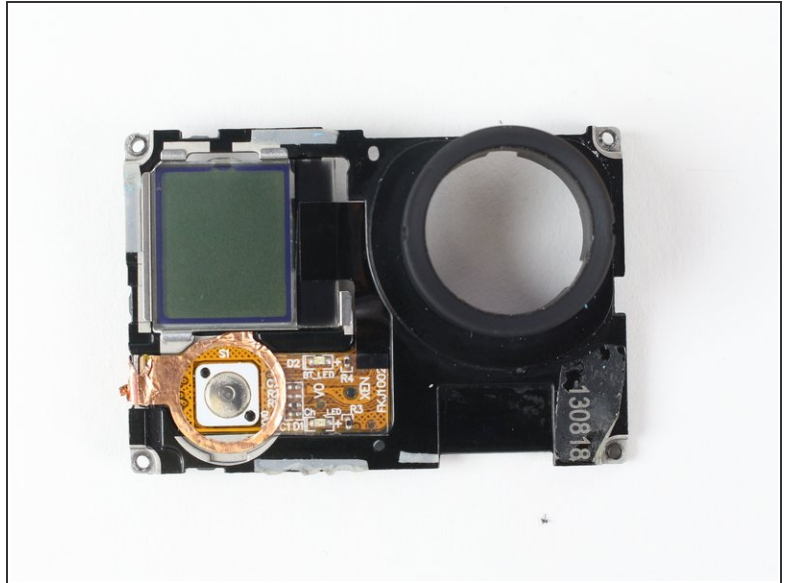
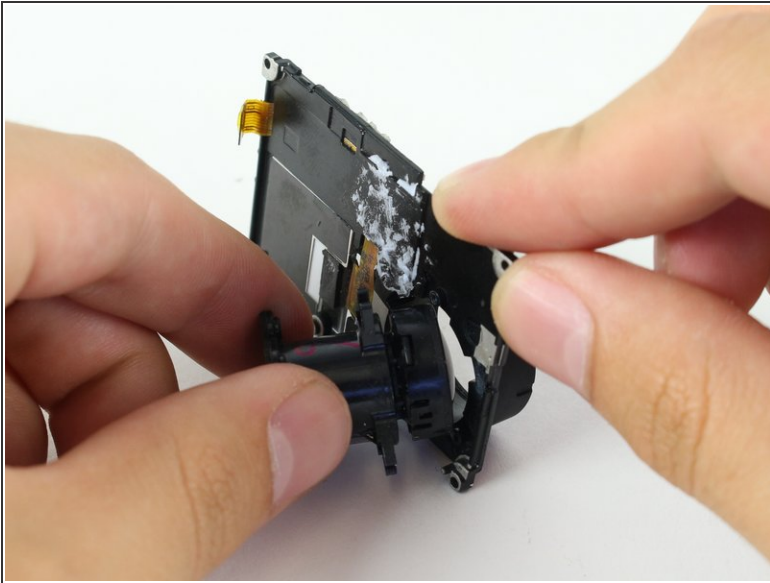
- Using the Phillips head bit, remove the silver screw near the the top edge of the board.
- Separate the LCD assembly by pulling away the motherboard.

Step 11



- There are 3 Phillips #00 screws holding the lens onto the LCD housing that need to be removed.
- ⓘ Our screw on the top right is stripped, which is why it looks different. However, they will all look the same in your device.

Step 12



- Carefully remove the camera lens from the LCD Housing.
- Now you have the LCD housing removed!

To reassemble your device, follow these instructions in reverse order.