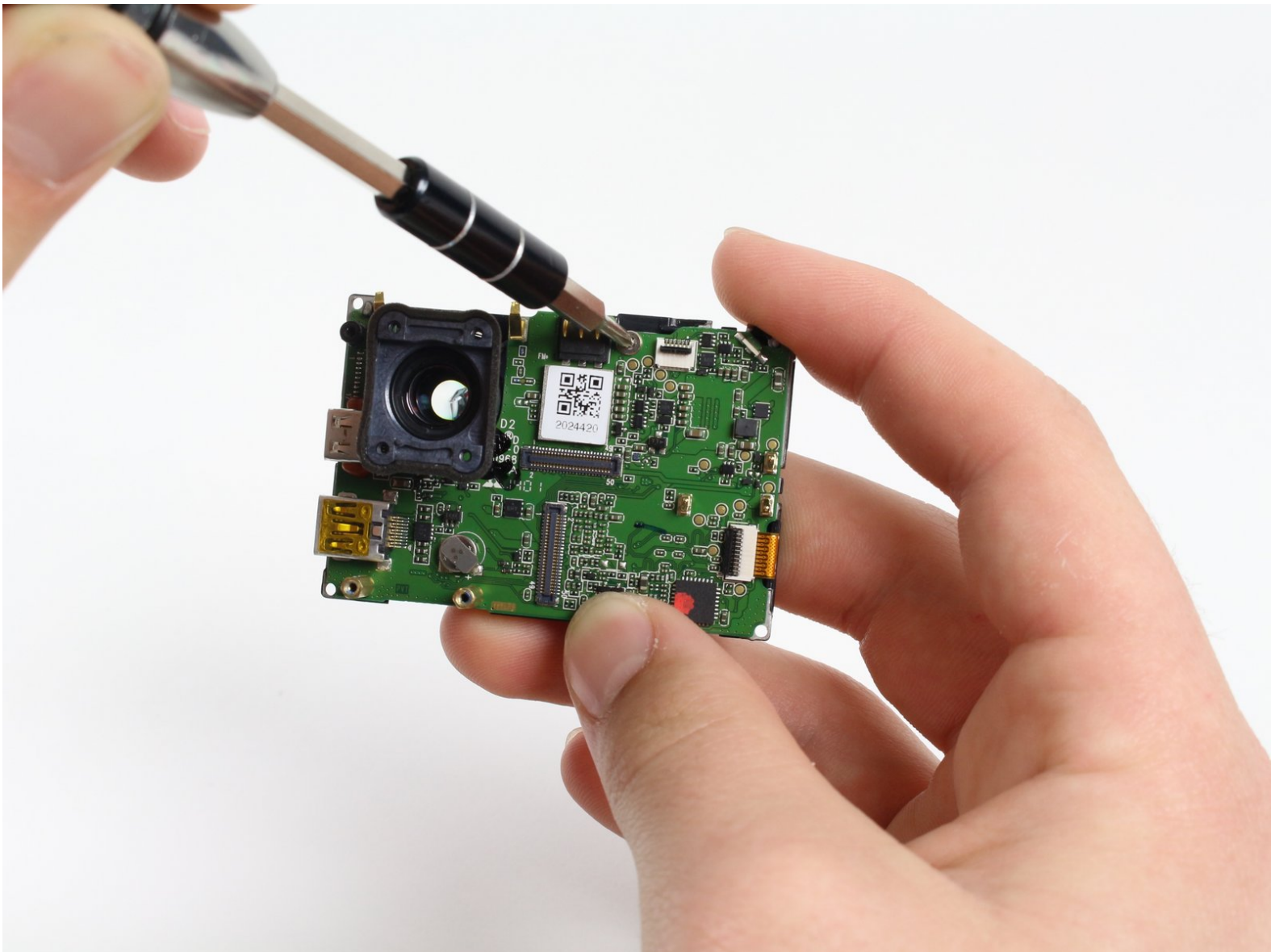




# GoPro Hero 3+ Silver Edition Motherboard Replacement

This guide presents the replacement of the motherboard inside of your GoPro Hero3+ Silver Edition Camera.

Written By: Blake Ehlers



# INTRODUCTION

Are the circuits of your GoPro's motherboard fried from water damage? This guide provides steps on how to replace a GoPro Hero 3+ Silver Motherboard and get your camera back in working condition.



## TOOLS:

- [Tweezers](#) (1)
- [Phillips #00 Screwdriver](#) (1)
- [iFixit Opening Tools](#) (1)



## PARTS:

- [GoPro Hero3 Plus Silver Front Panel](#) (1)
- [GoPro Hero3 Plus Silver Image Sensor](#) (1)
- [GoPro Hero3+ Silver Motherboard](#) (1)

## Step 1 — Battery



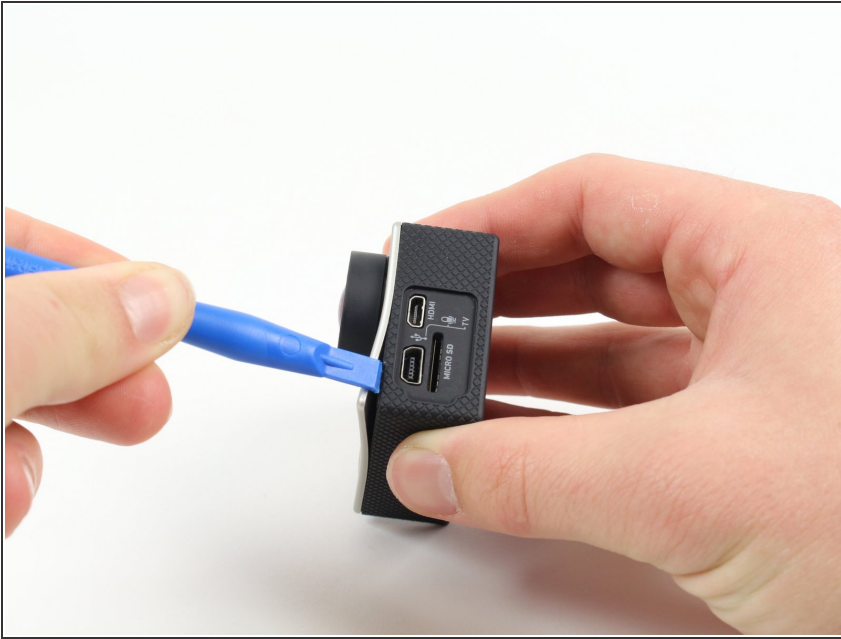
- Push the tab on the back of the device left to remove the plate covering the battery.

## Step 2



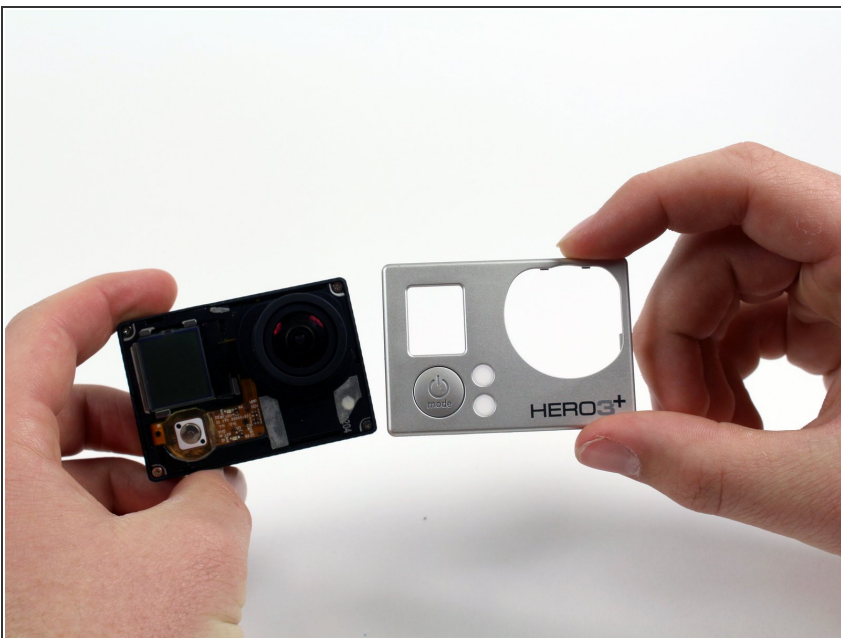
- Use the strip of tape on the battery to remove the battery from the housing.

## Step 3 — Front Panel



- Insert a plastic opening tool in between the front face plate and the black housing.
- ⓘ Make sure you insert the plastic opening tool next to the microSD card slot. There is a small gap that will help separate the face plate.

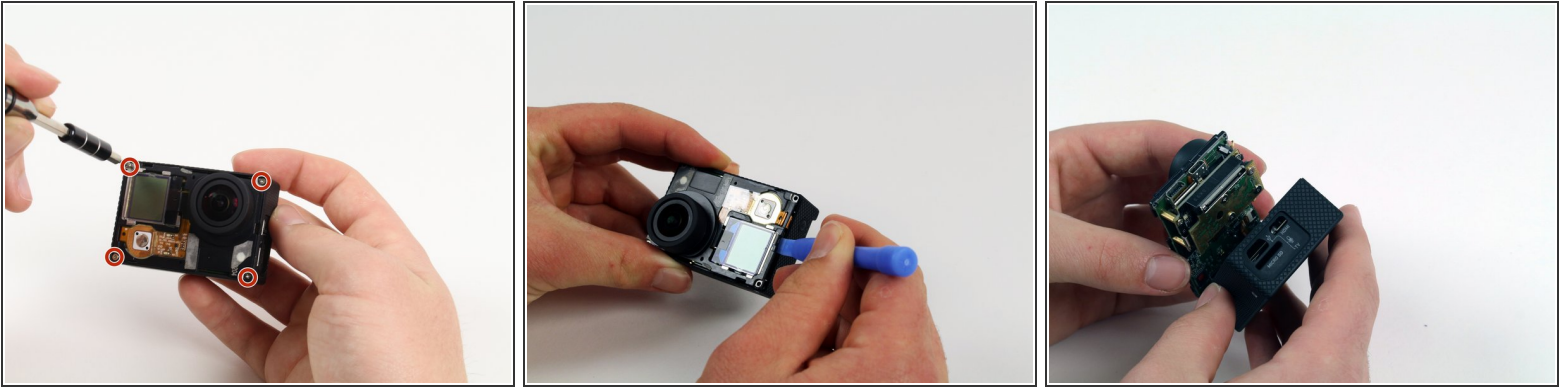
## Step 4



- Continue to use the plastic opening tool and separate the front face plate from the rest of the device.
- ⓘ There is adhesive that helps attach the front face plate. Some extra prying may be required to separate the face plate, but do not use excessive force.

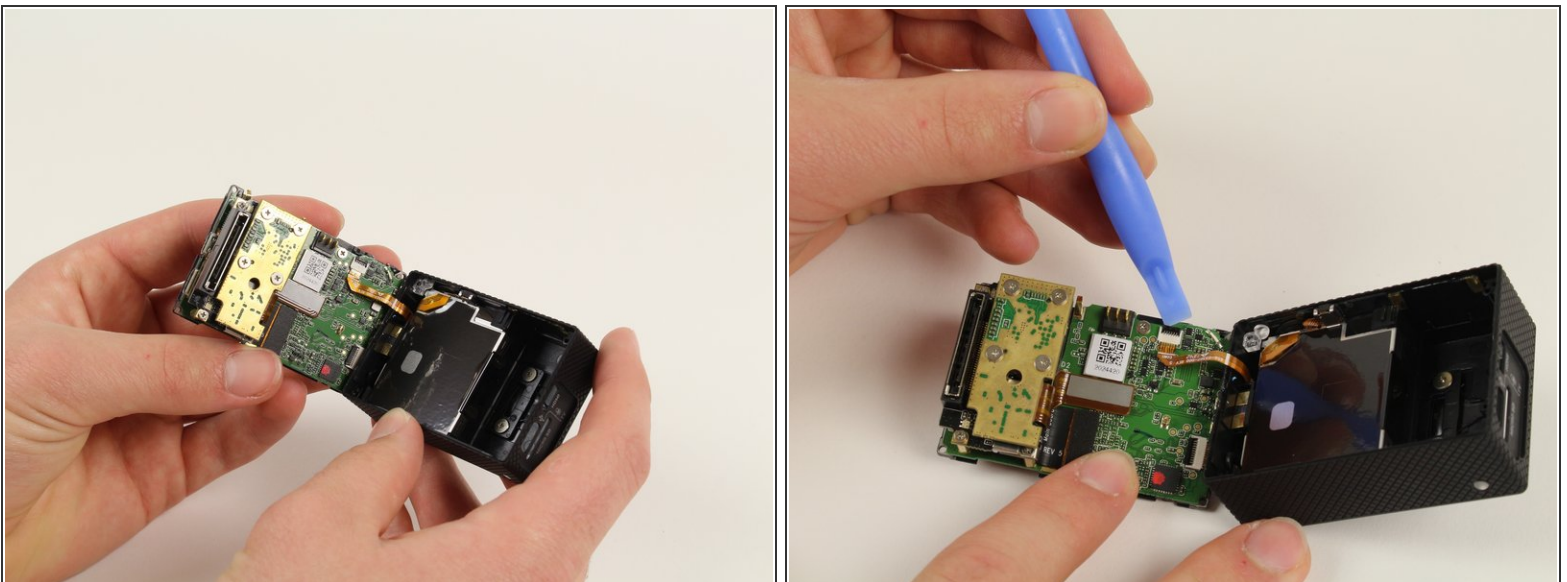


## Step 5 — Image Sensor



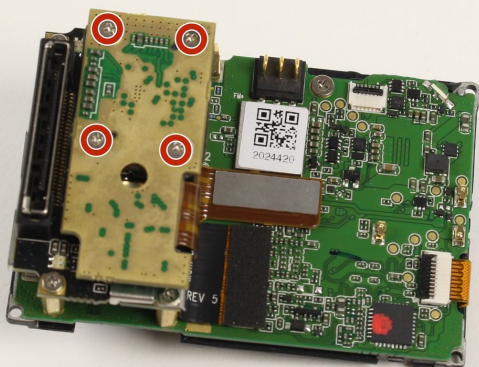
- Locate the four 8.1mm PH00 screws on the corners of the GoPro and unscrew them using the phillips screwdriver.
  - Gently remove the motherboard by using a plastic opening tool to pry it out of the housing.
- ⚠ Be careful not to damage the ribbon cable connected to the GoPro housing and motherboard.

## Step 6



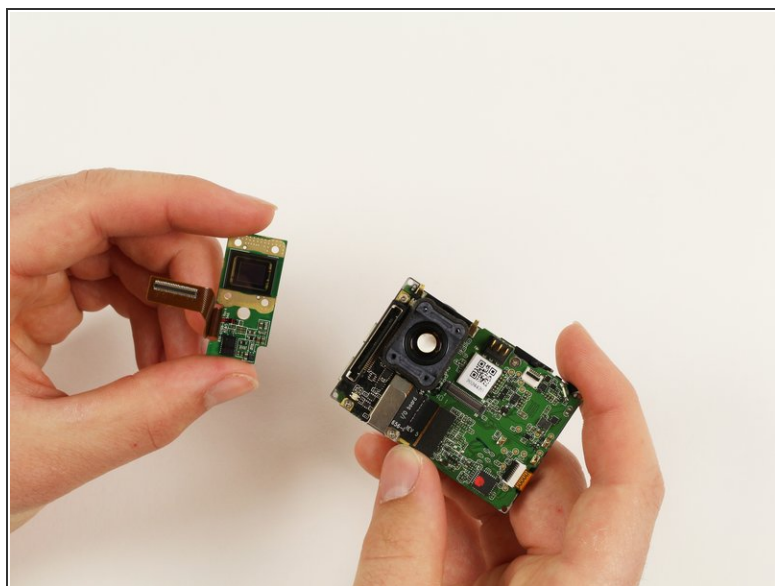
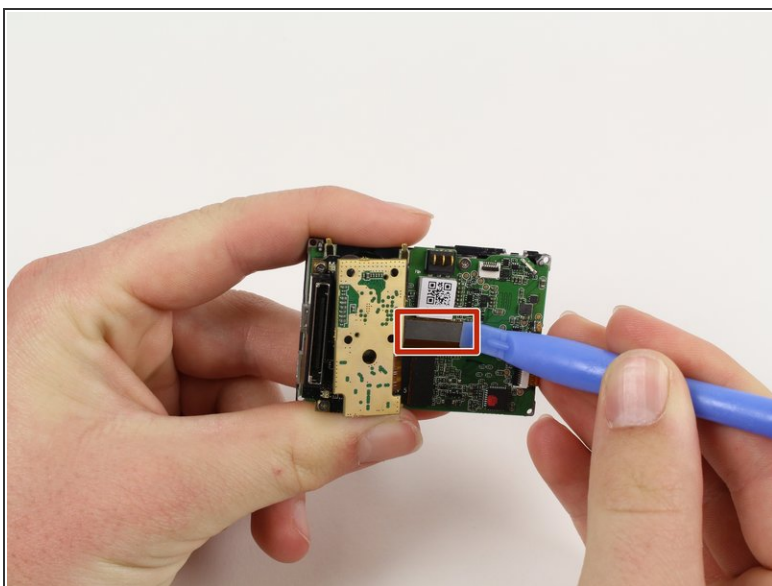
- Remove the ribbon cable by carefully flipping the black clip up with the plastic opening tool and pulling the cable out.

## Step 7



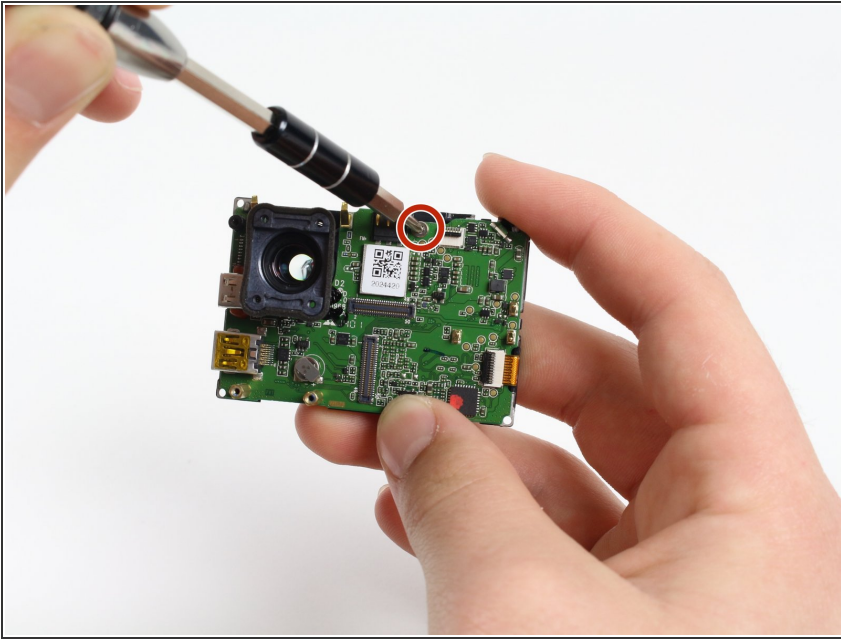
- Remove the four 4mm PH00 screws attaching the image sensor to the motherboard with your screwdriver.

## Step 8



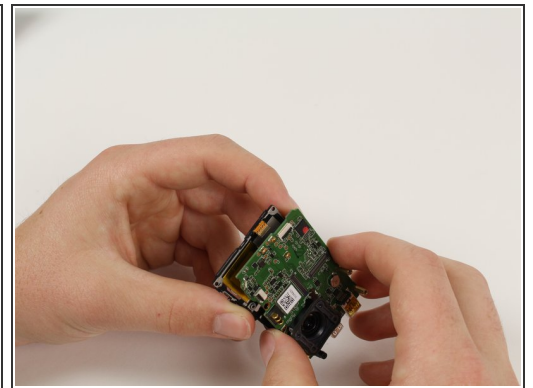
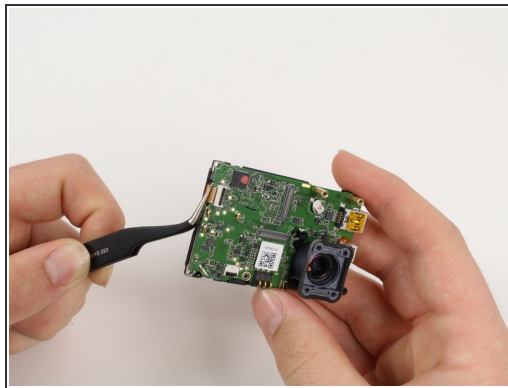
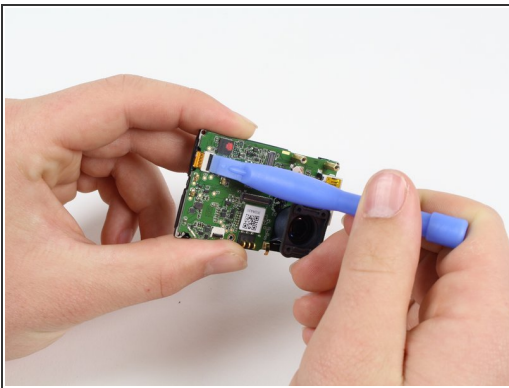
- Pry off the last ribbon cable with a plastic opening tool.
- Remove the image sensor from the motherboard.

## Step 9 — Motherboard



- Remove the single 3.2mm PH00 screw with your screwdriver to detach the motherboard from the mid frame.

## Step 10



- Use a plastic opening tool to gently separate the LCD ribbon cable from the motherboard.
  - Gently remove the motherboard from the midframe using tweezers.
- ⚠ Remove motherboard by lifting from the edges. This will reduce the chance of damaging components on the motherboard.

To reassemble your device, follow these instructions in reverse order.