



# GoPro Hero 4 Black Camera Lens Replacement

This in-depth guide will show you how to remove the camera lens from you Hero4 Black

Written By: Jonathan Campbell





## TOOLS:

- [Tweezers](#) (1)
- [iFixit Opening Tools](#) (1)
- [Metal Spudger](#) (1)
- [Phillips #000 Screwdriver](#) (1)



## PARTS:

- [GoPro Hero4 Lens](#) (1)

## Step 1 — Camera Lens



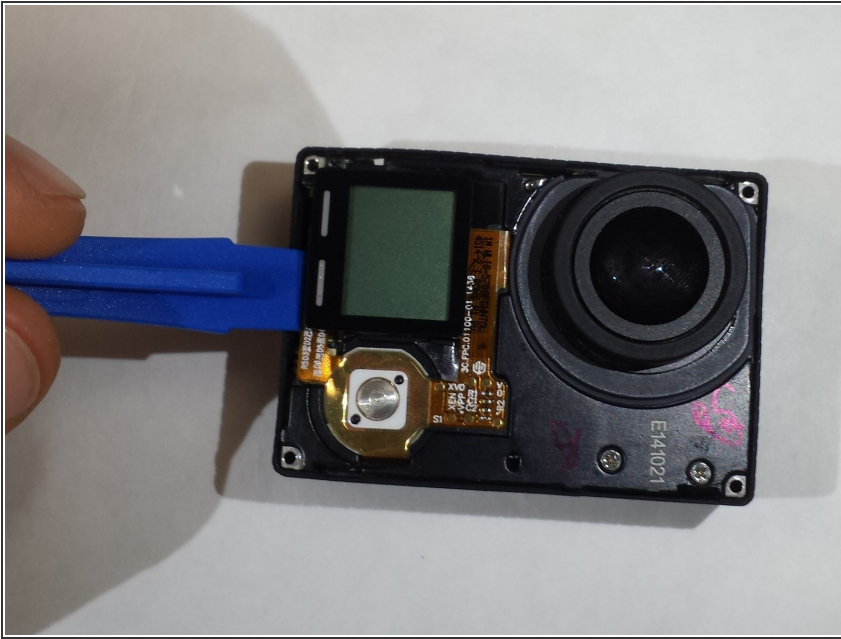
- Remove the faceplate by carefully prying around the edge.
- Loosen the clips on the edge, then pull the faceplate off. Be aware that there is double stick tape holding it in place(indicated by the red arrow).
- ⓘ The power button on the front of the GoPro may pop off.

## Step 2



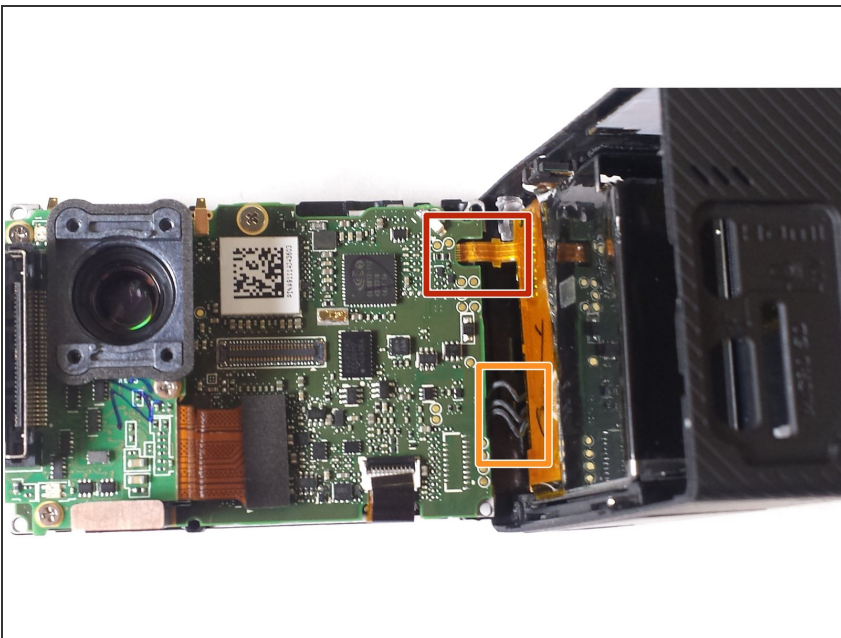
- Take the PH000 philips head screwdriver and remove the 4 corner screws.
- ⓘ Note: The screws circled in red are longer than the screw circled in orange.

## Step 3



- Now remove the camera and boards from the black plastic housing. Use the plastic opening tool to assist in the removal.
- ⓘ Be careful of the surrounding guts underneath the front. Work yourself around the camera on each side.
- ⓘ The side ports might cling to the plastic housing and prevent the camera from coming out. Delicately maneuver the ports out of the housing.

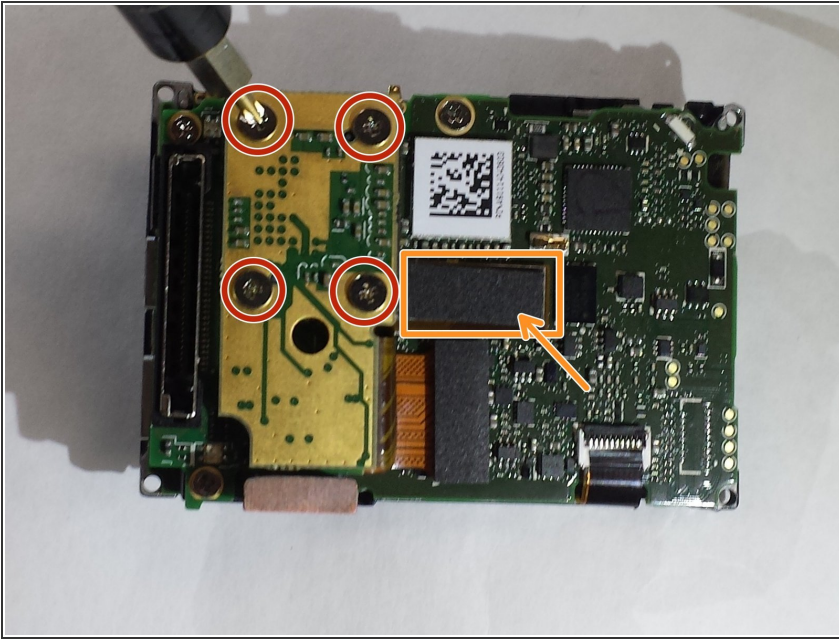
## Step 4



- Remove the ribbon strip by pulling on it. This will remove the connection.
- Push down on the three wires and the clip will disconnect from the motherboard.
- ★ During reassembly, remove the black tape on the ribbon cable, turn the camera upside down so you can see the port, and reinsert the cable with tweezers. It's a lot easier!



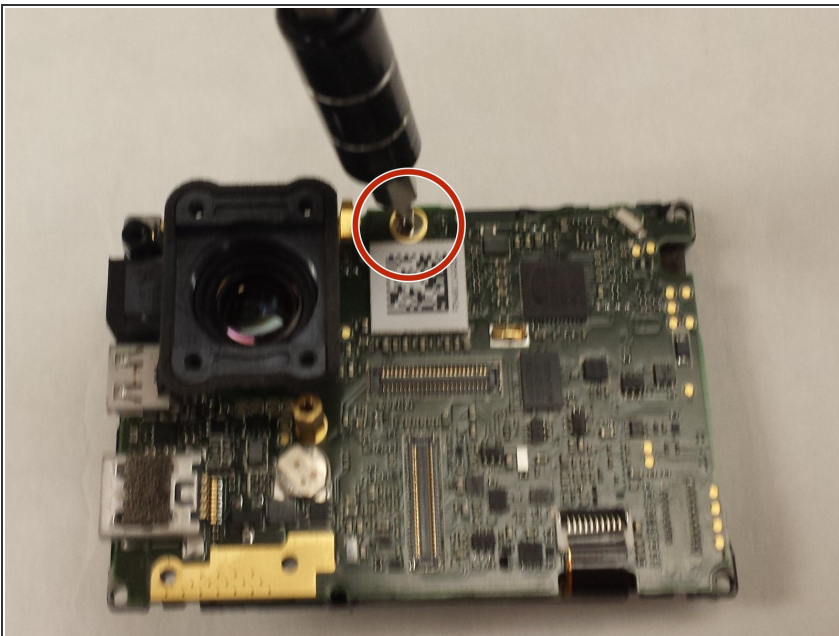
## Step 5 — Camera Sensor



**i** In this step you'll remove the camera sensor. Make sure you keep it clean as dust can form on the other side. If possible, put it in an electrostatic bag while you finish your repair.

- Remove the four PH000 Phillips screws outlined in red.
- Gently remove the board. As you lift the board, the computer chip (outlined in orange) will separate from the motherboard.

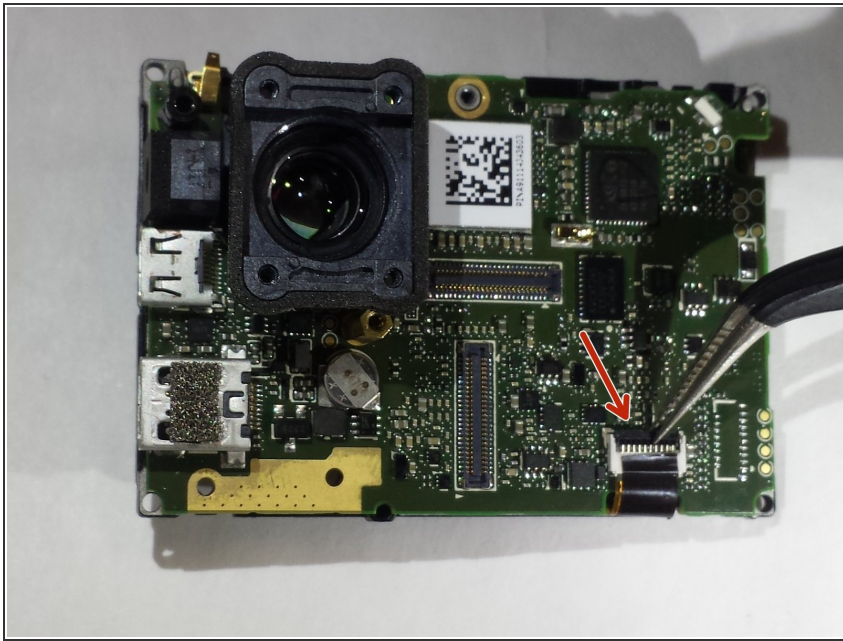
## Step 6



- Remove the single screw.

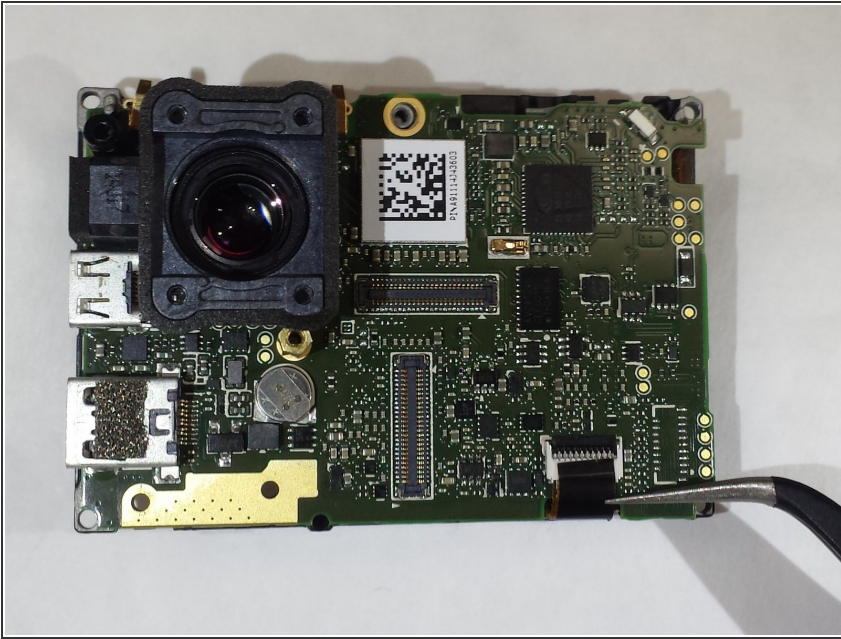
**i** This is the last screw holding the motherboard in. (It will still be held in by the clip holding the ribbon cable)

## Step 7



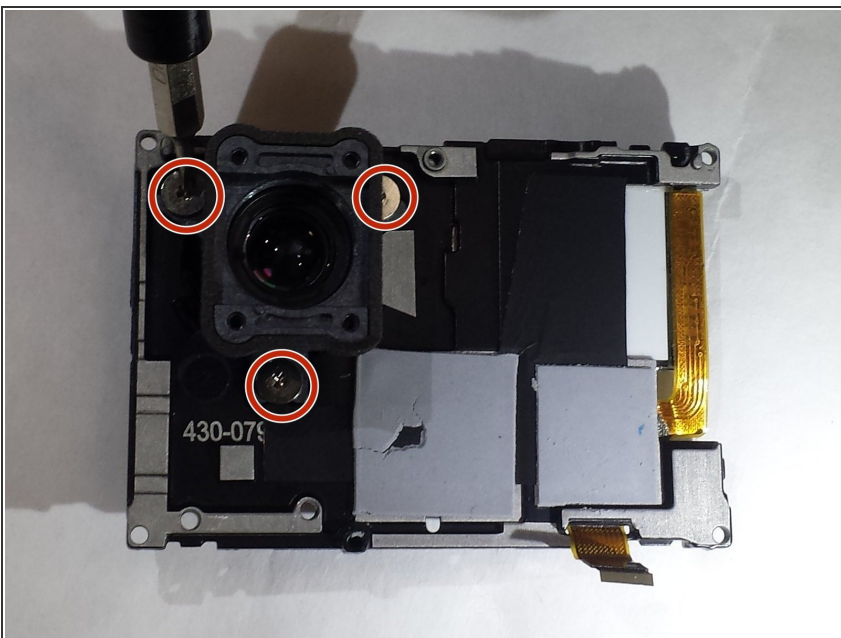
- At the top of the ribbon strip, there is a black clip that needs to be popped up.
- ⓘ You can use your finger or a pair of needle nose tweezers.
- ★ Remove the black tape from the ribbon cable before reinstalling. Reapply after!

## Step 8



- Remove the black tape from the ribbon cable. With the needle nose tweezers, gently grab the ribbon and pull down. This will disconnect the ribbon from the connector.
- Now the motherboard can be removed. This will allow access to the screws that hold the camera lens in.

## Step 9



- Remove these three screws. Then pull the lens out and replace with a new one.

To reassemble your device, follow these instructions in reverse order.