



# GoPro Hero Lens Replacement

This guide will show you how to replace the lens to your GoPro Hero Camera if it's scratched, broken or just plain dysfunctional.

Written By: River Drake



## INTRODUCTION

This guide will entail taking all of the GoPro's components out, as the lens is at the bottom. Because the GoPro Hero is not very repairable, this guide is not for the faint of heart. However, if you follow the steps correctly, you should be able to replace the lens, instead of buying a new camera.



### TOOLS:

- [Metal Spudger](#) (1)
- [Phillips #000 Screwdriver](#) (1)




### PARTS:

- [GoPro Hero Lens](#) (1)

## Step 1 — Casing



 Power off your GoPro before beginning disassembly.

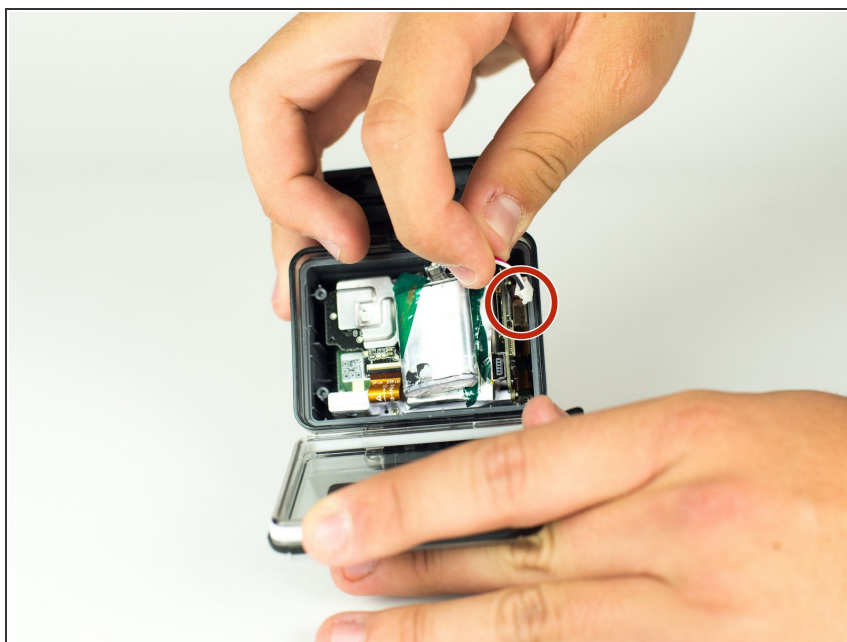
- Unclip the black latch to the camera case and open the case.

## Step 2



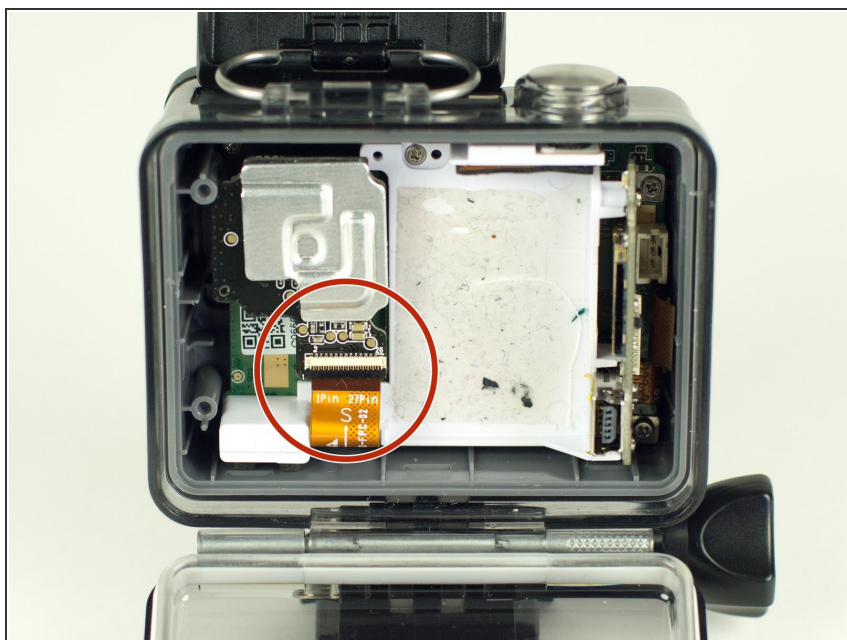
- Gently pry the back open by inserting a metal spudger between the case and back panel.

### Step 3



- Disconnect the battery from the motherboard by unplugging the red, white, and black wires from the white adapter.

### Step 4



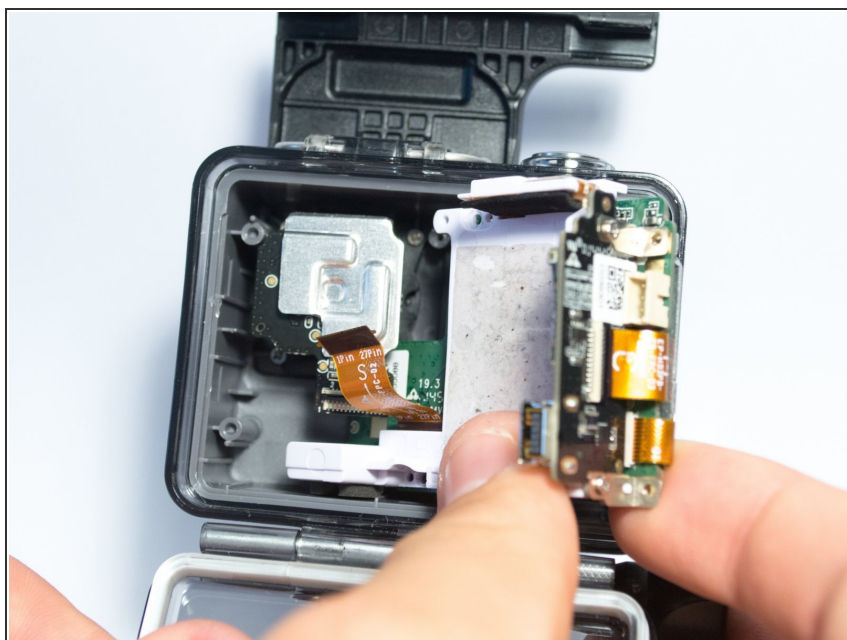
- Disconnect the ribbon cable from the lens by lifting the black latch and gently pulling the ribbon cable from the socket.

## Step 5



- Use a Phillips screwdriver (PH000) to remove the four screws around the white plastic piece.
- ⓘ Make sure to keep track of these screws as they are very small.

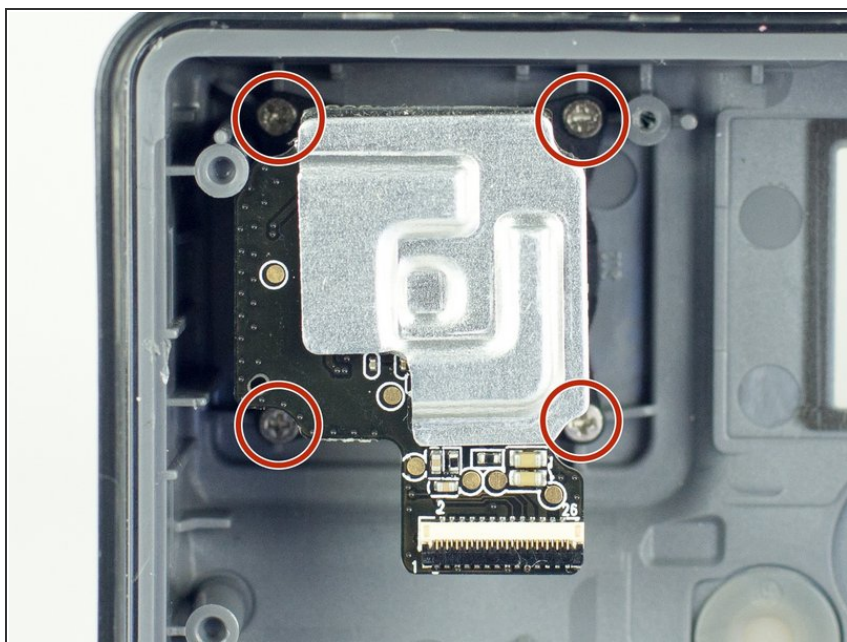
## Step 6



- Carefully remove the motherboard and white plastic piece from the case.



## Step 7 — Lens



- Remove the four screws from the lens.
- ⓘ These screws are smaller than the ones removed from the white plastic piece.

## Step 8



- Remove the lens from the case.

To reassemble your device, follow the instructions in reverse order.