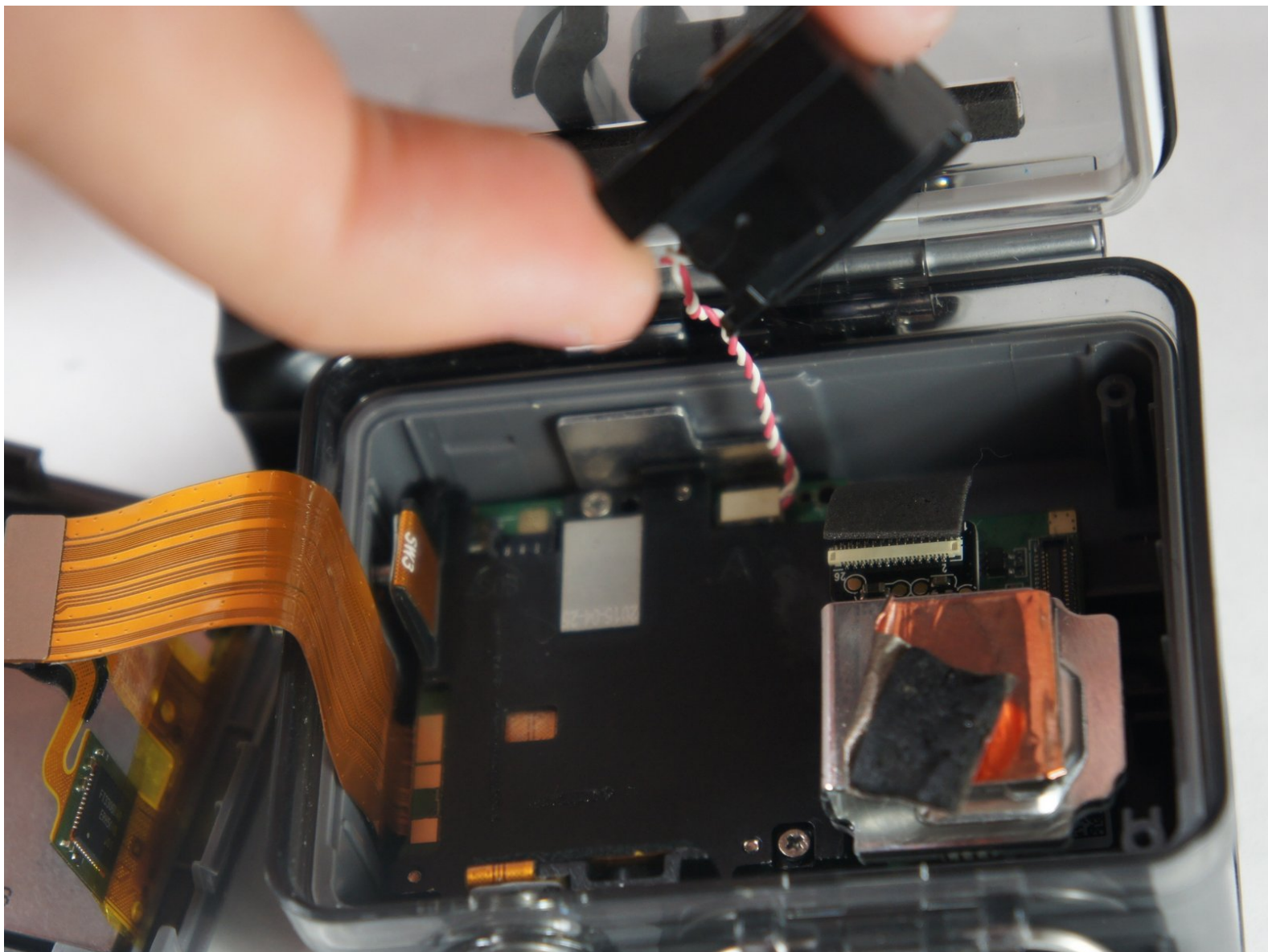




GoPro Hero+ LCD Image Sensor Replacement

The image sensor gives the GoPro its high resolution photos and videos. This guide will show you how to replace it.

Written By: Matthew Tinkey



INTRODUCTION

The image sensor is located behind the lens and is attached to the motherboard. Be careful in removing wiring from the motherboard, they are thin and small contacts and must be handled with care.

TOOLS:

- [iFixit Opening Tools](#) (1)
 - [Metal Spudger Set](#) (1)
 - [Tweezers](#) (1)
 - [Phillips #00 Screwdriver](#) (1)
 - [Phillips #000 Screwdriver](#) (1)
-

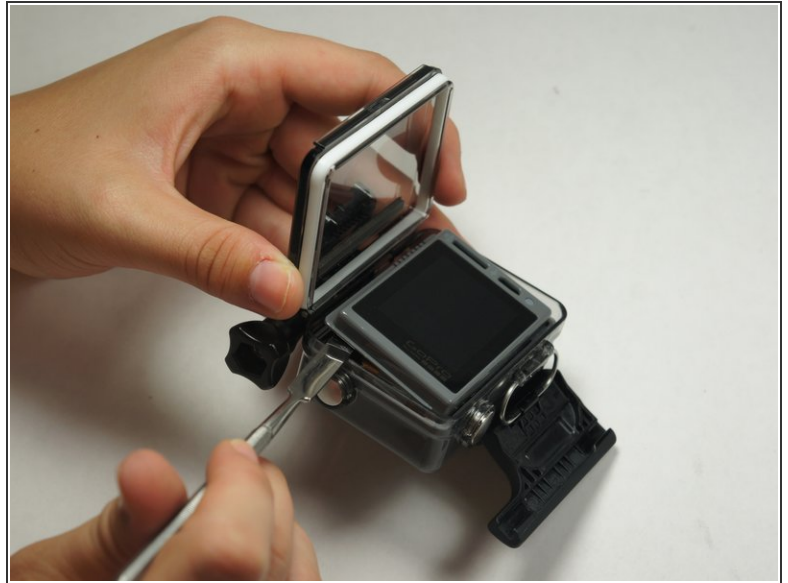
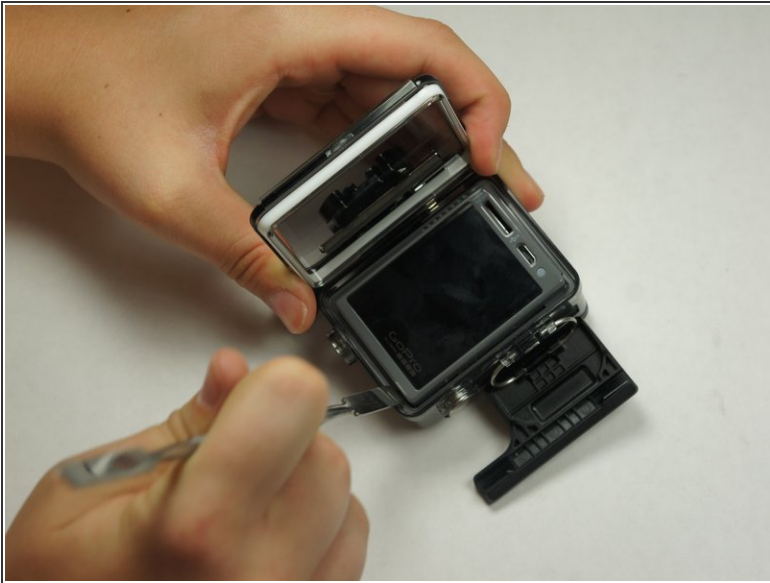
Step 1 — Back Panel



 Be sure to power off the GoPro before you start disassembly.

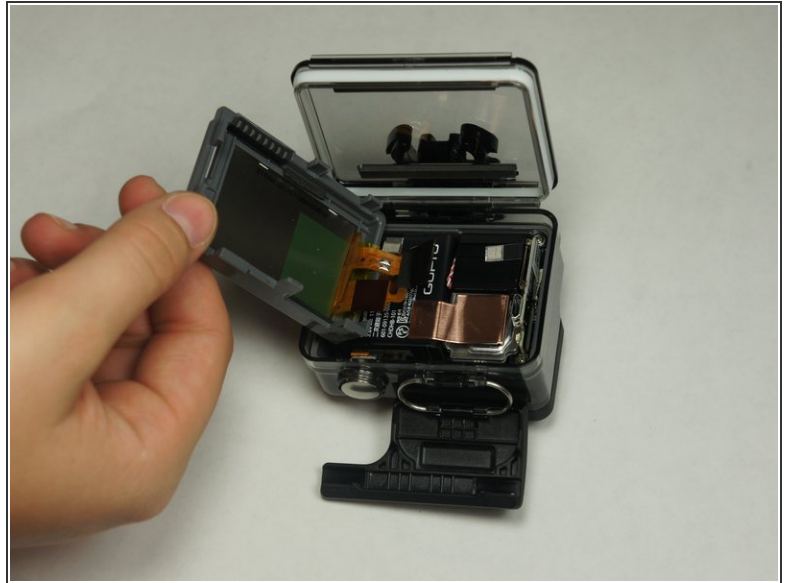
- Pop up and pull back on the clip to remove the screen cover and expose the back panel with the touchscreen.

Step 2




- Use the metal spudger to pry around the perimeter of the panel.
- Pry the panel upwards by inserting the metal spudger into the corner crease between the panel and camera shell.

Step 3




- Pry around the panel to ensure it is not attached to the device.
- Move the panel to the side so you can access the internal components.

 The panel is still attached to the rest of the device with a ribbon cable, so be sure to not tear or damage the cable.

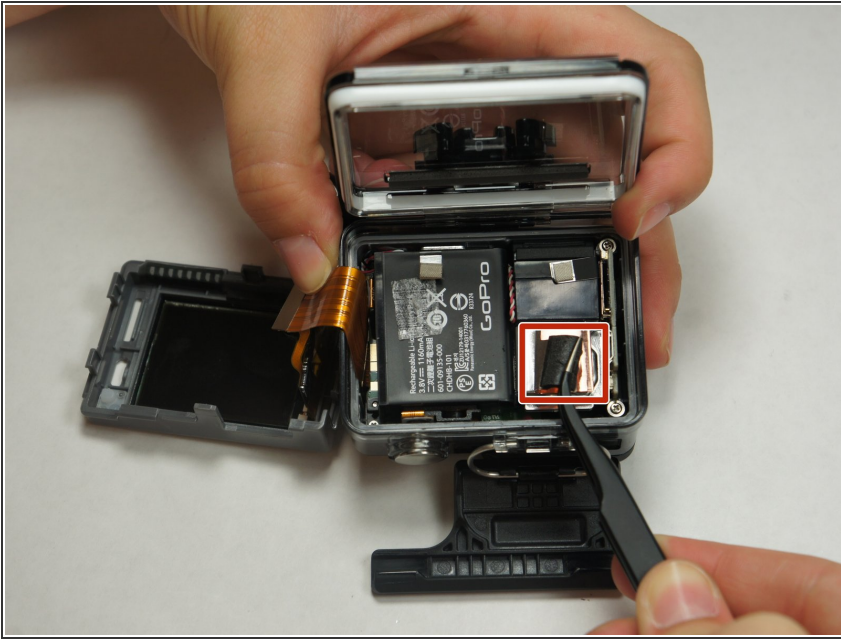
Step 4 — Battery



- Peel back the rear panel ribbon cable that is adhered to the battery until it is completely separated from the battery.

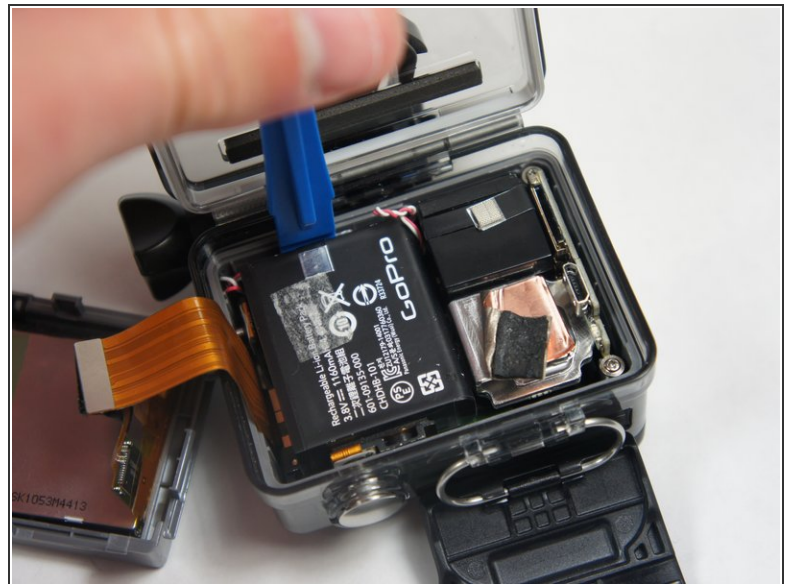
 Be careful of metal contacts on strip; they can be sharp.

Step 5



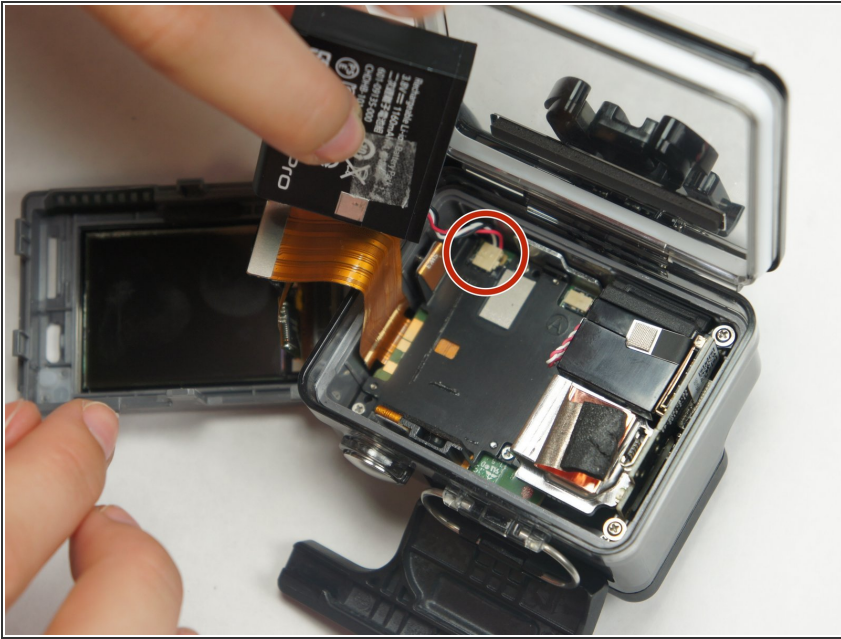
- Using tweezers, peel off the copper tape on the right side of the battery.

Step 6



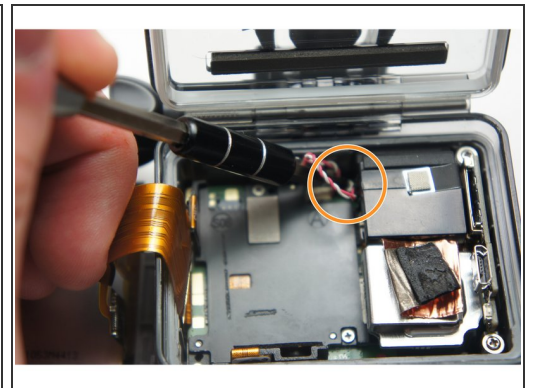
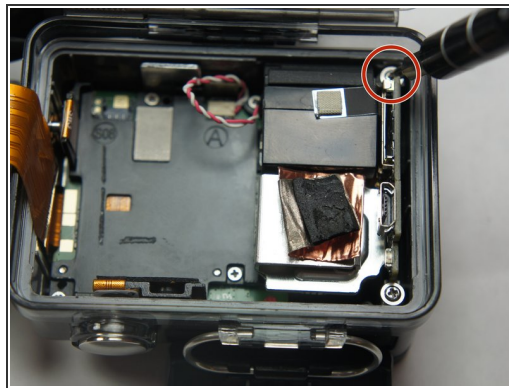
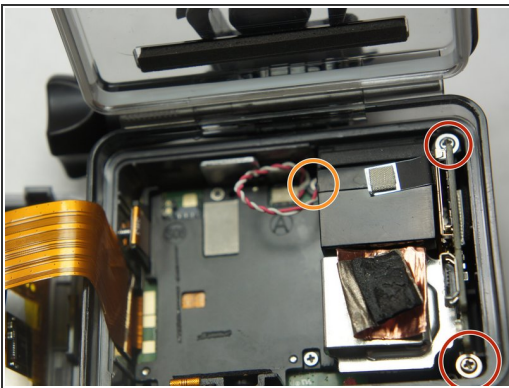
- Place the plastic opening tool at one of the edges of the battery then pry until the battery is removed from the GoPro.

Step 7



- Use a pair of tweezers to disconnect the battery connector from the motherboard.
- Gently pull the battery off the motherboard. Pulling vertically off the motherboard will give a clean release.

Step 8 — MicroSD/Micro USB Port Assembly



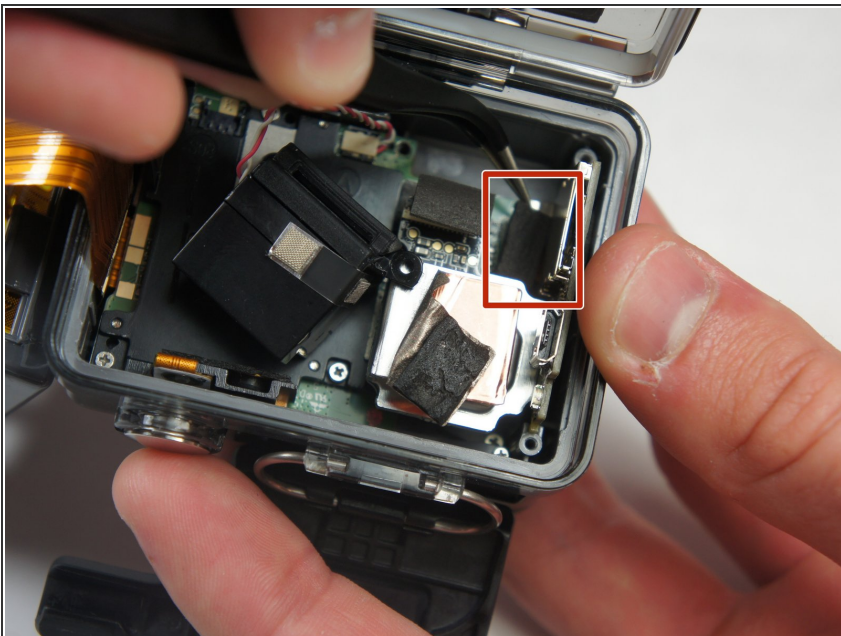
- Remove the two 6 mm Phillips #00 screws.
- Remove the single 4 mm Phillips #000 screws.

Step 9



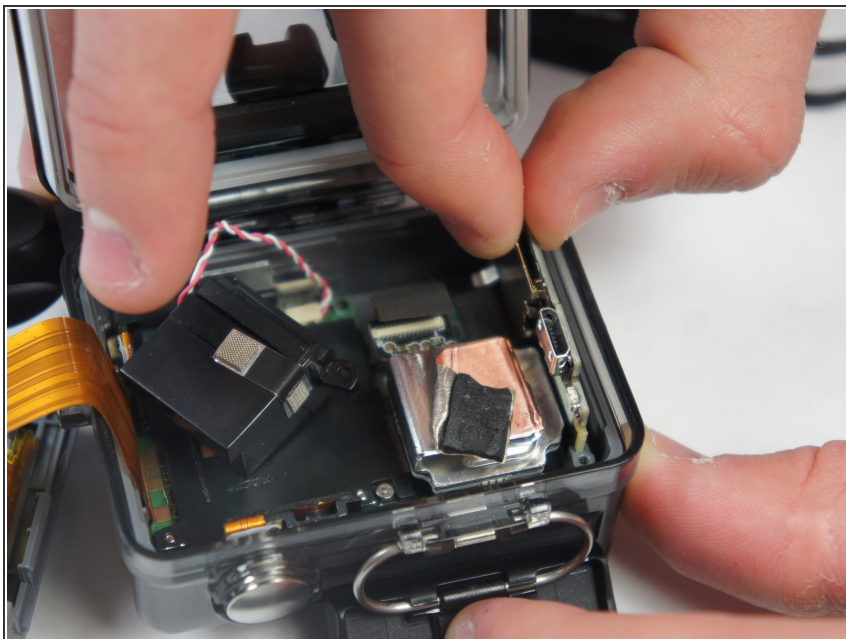
- Remove the image sensor from the camera.
- ⓘ You do not have to unplug the black box to remove the USB/SD chip.

Step 10



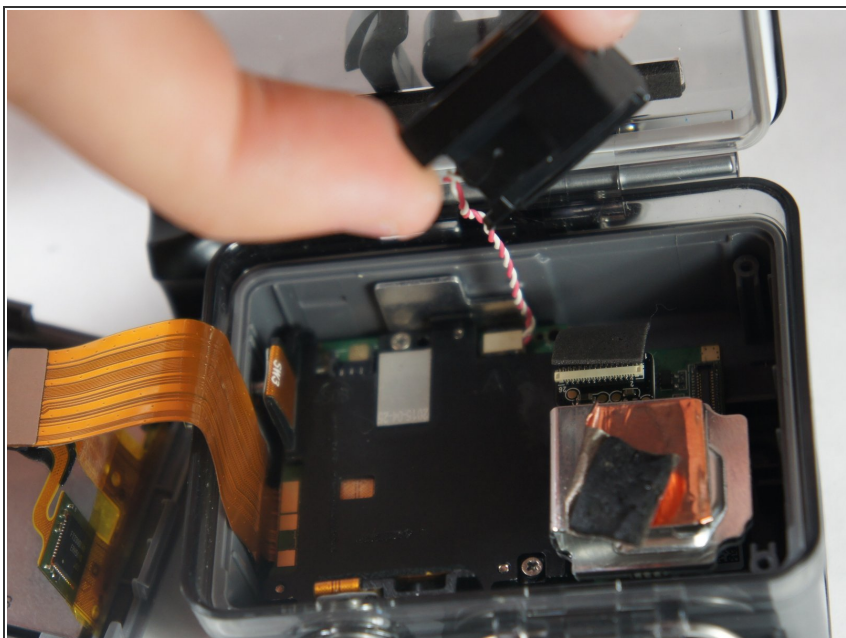
- Grab the edge of the ribbon cable with the tweezers and gently pull until the cable is disconnected from the motherboard.
- ⚠ Be careful when removing the ribbon cable. You must pull gently or you can rip the ribbon off of its contacts.

Step 11



- Gently lift the microSD/Micro USB assembly up and out of the device.

Step 12 — Image Sensor



- Use your fingers and gently pull out the sensor from the motherboard by slowly and gradually pulling up on the image sensor box.

⚠ Do not yank on the image sensor, it can rip out the wiring or damage the motherboard.

To reassemble your device, follow these instructions in reverse order.