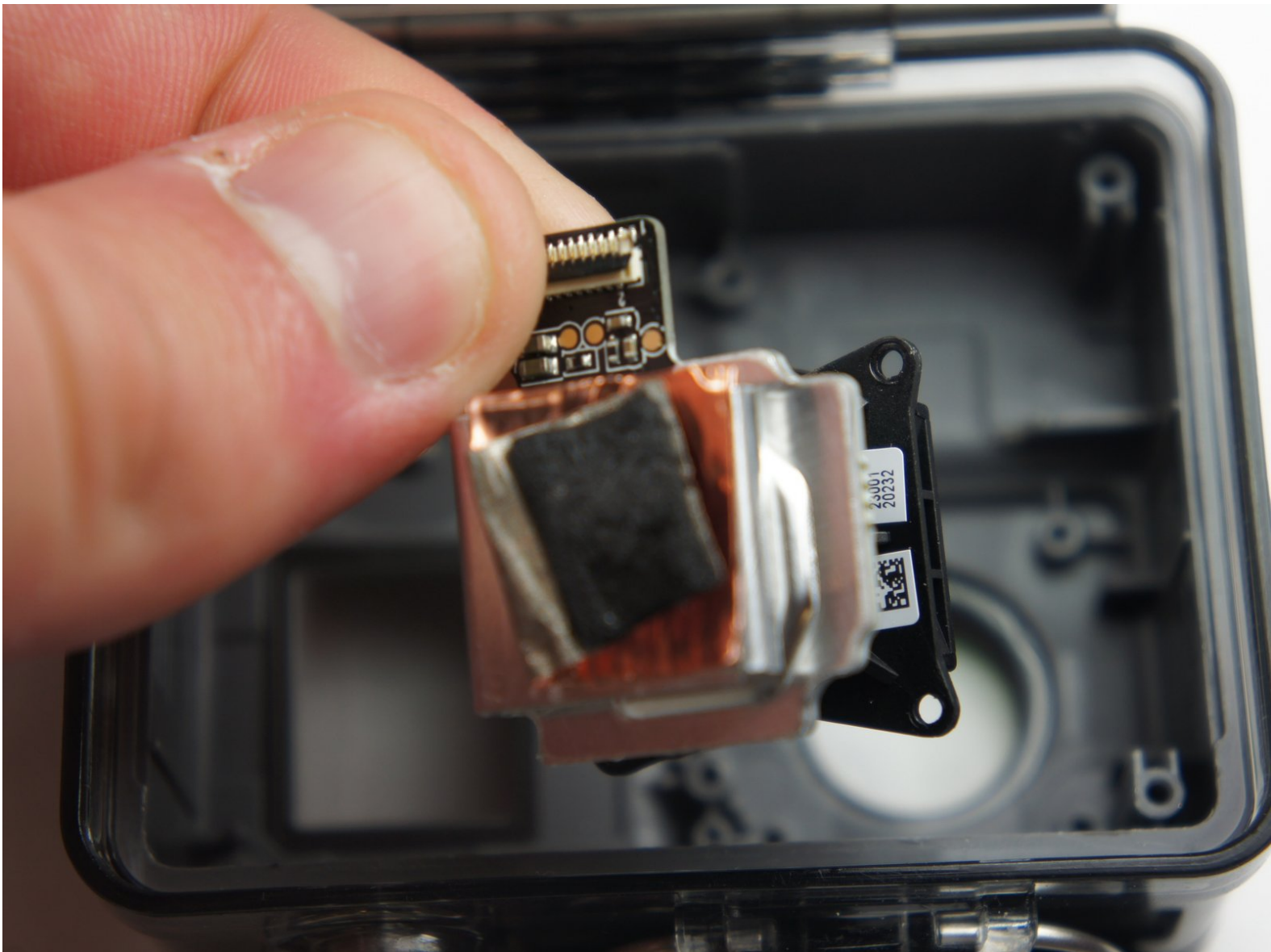




GoPro Hero+ LCD Lens Replacement

This guide will help you access and replace a faulty lens in your GoPro camera.

Written By: Matthew Tinkey



INTRODUCTION

To remove the lens assembly, you must remove some internal parts first. Some of these screws are in tight places, so they will be tedious to access.



TOOLS:

- [Metal Spudger Set](#) (1)
- [iFixit Opening Tools](#) (1)
- [Tweezers](#) (1)
- [Phillips #00 Screwdriver](#) (1)
- [Phillips #000 Screwdriver](#) (1)



PARTS:

- [GoPro Hero+ LCD Lens](#) (1)

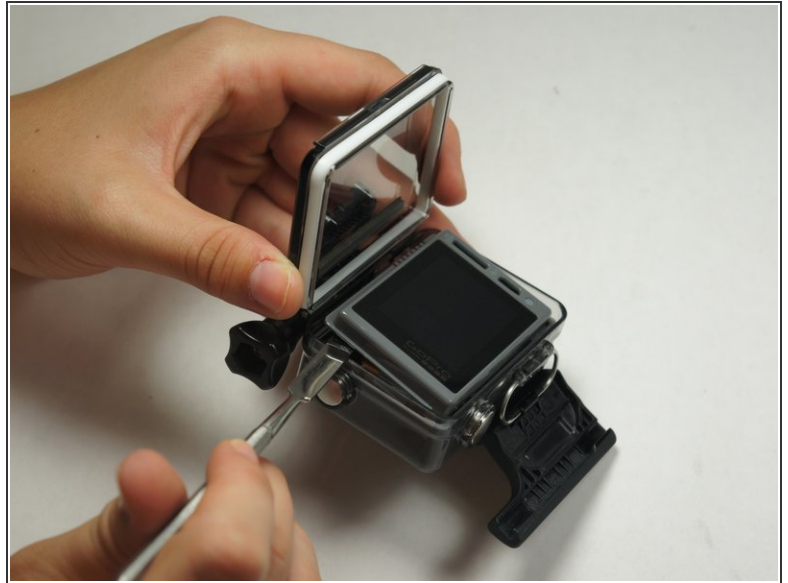
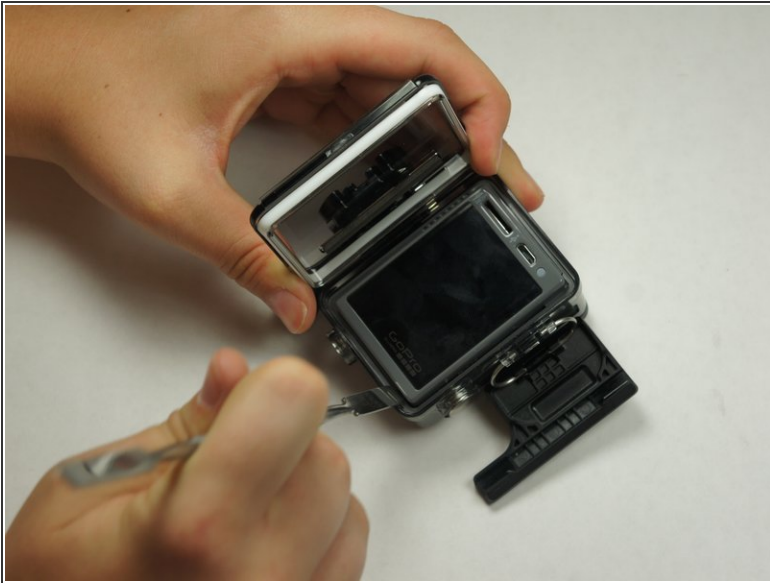
Step 1 — Back Panel



 Be sure to power off the GoPro before you start disassembly.

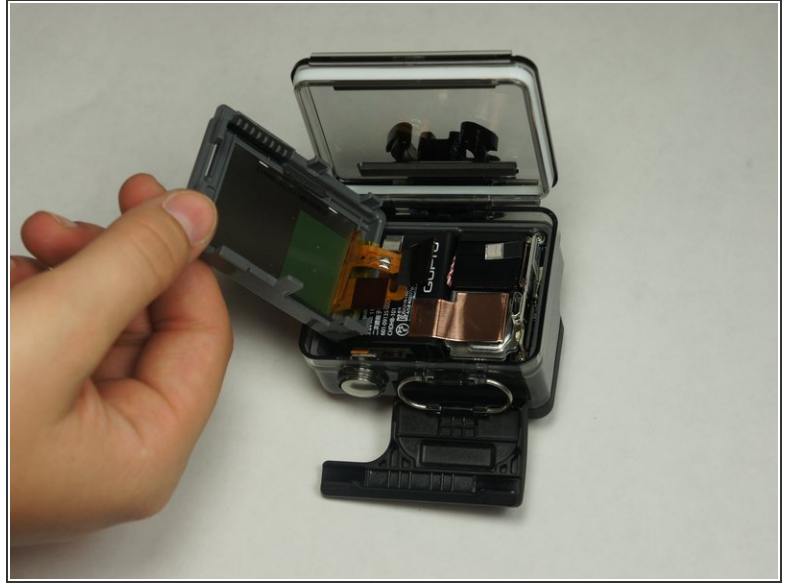
- Pop up and pull back on the clip to remove the screen cover and expose the back panel with the touchscreen.

Step 2




- Use the metal spudger to pry around the perimeter of the panel.
- Pry the panel upwards by inserting the metal spudger into the corner crease between the panel and camera shell.

Step 3




- Pry around the panel to ensure it is not attached to the device.
- Move the panel to the side so you can access the internal components.

 The panel is still attached to the rest of the device with a ribbon cable, so be sure to not tear or damage the cable.

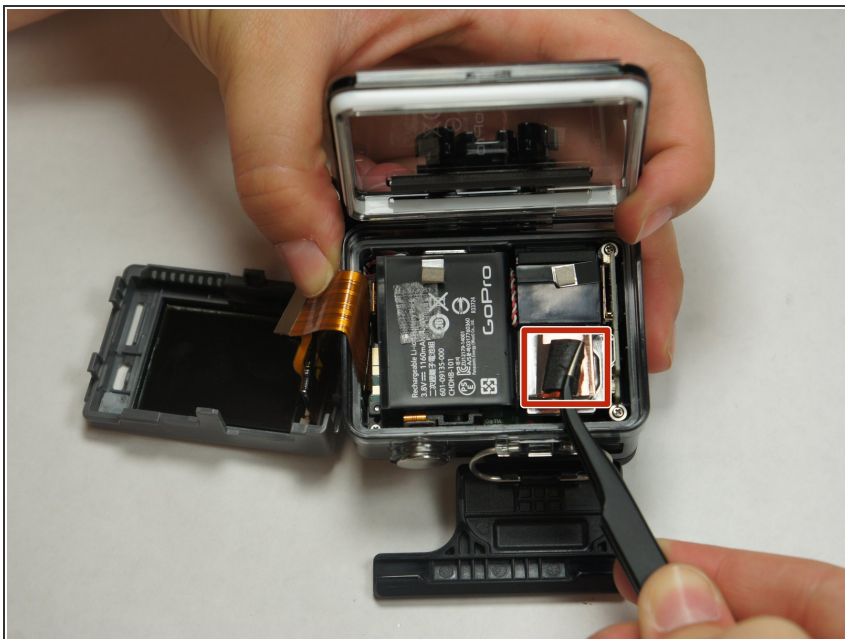
Step 4 — Battery



- Peel back the rear panel ribbon cable that is adhered to the battery until it is completely separated from the battery.

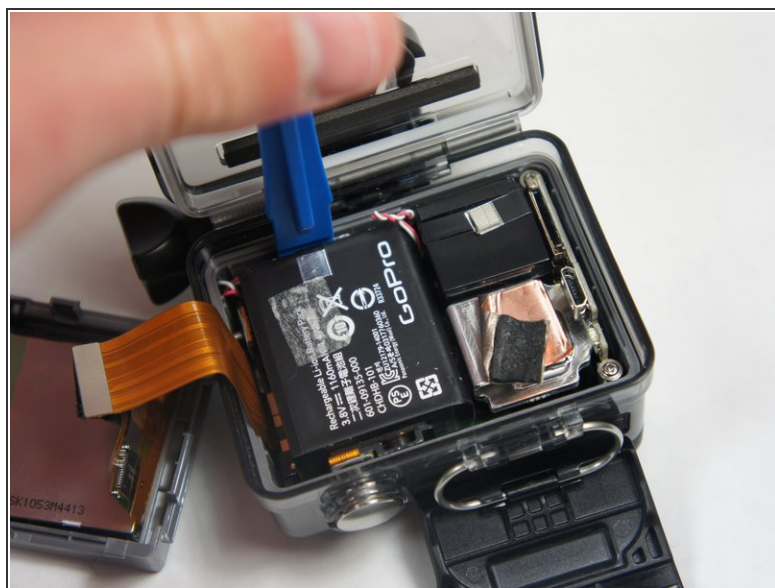
 Be careful of metal contacts on strip; they can be sharp.

Step 5



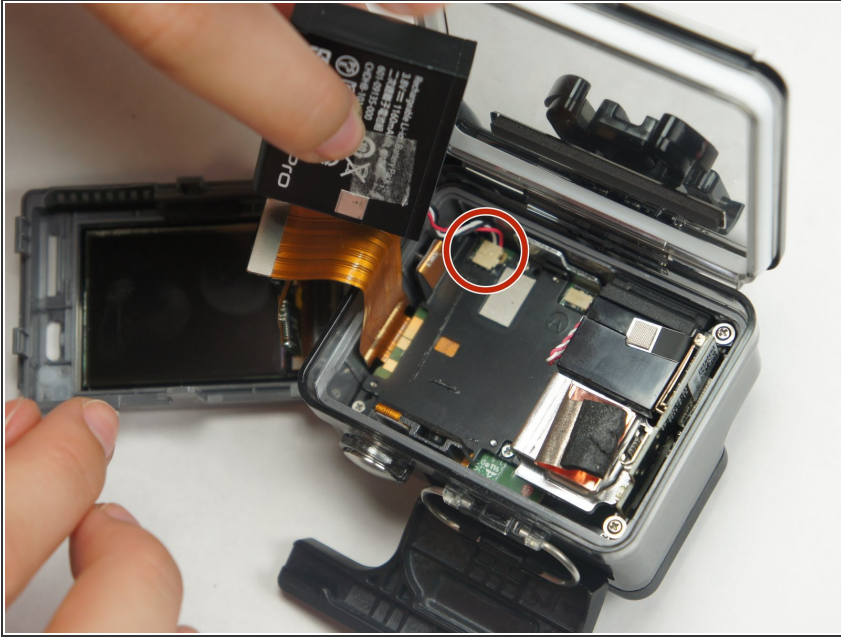
- Using tweezers, peel off the copper tape on the right side of the battery.

Step 6



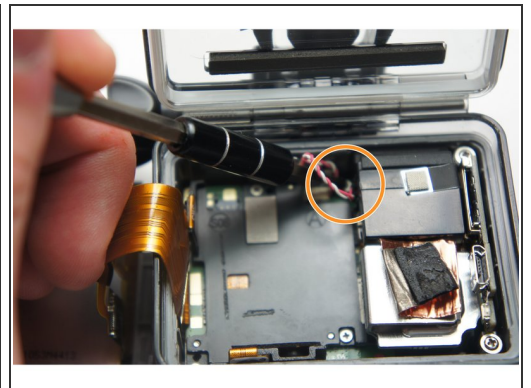
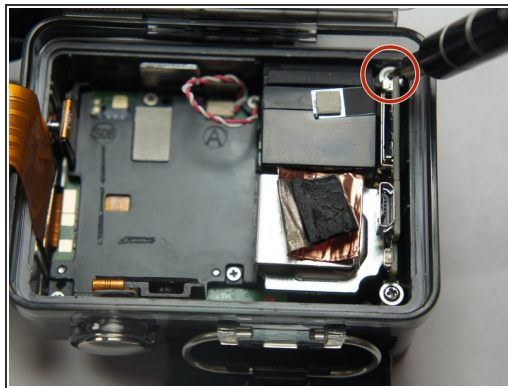
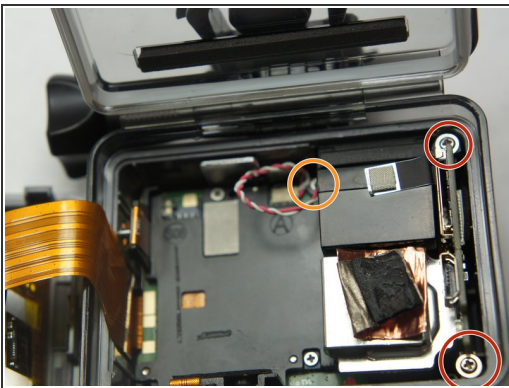
- Place the plastic opening tool at one of the edges of the battery then pry until the battery is removed from the GoPro.

Step 7



- Use a pair of tweezers to disconnect the battery connector from the motherboard.
- Gently pull the battery off the motherboard. Pulling vertically off the motherboard will give a clean release.

Step 8 — MicroSD/Micro USB Port Assembly



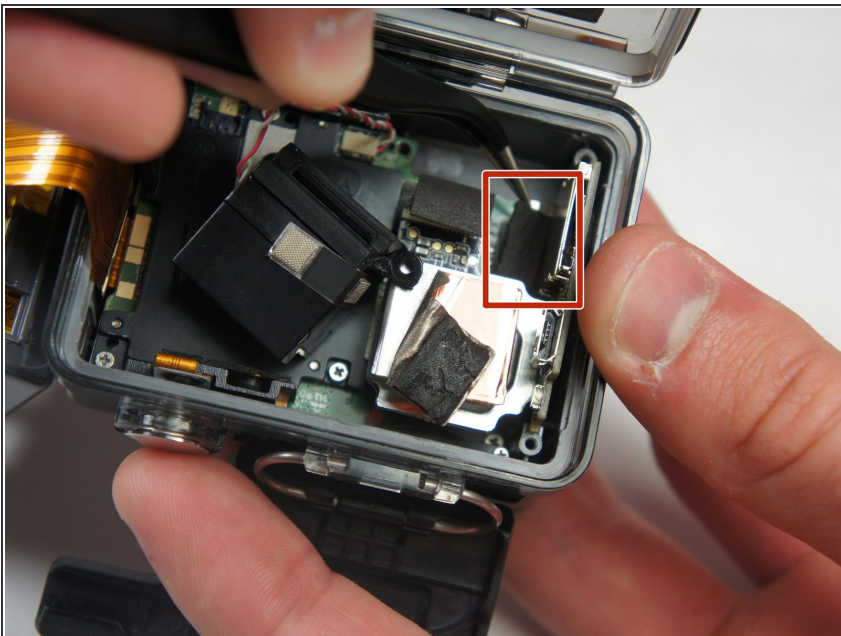
- Remove the two 6 mm Phillips #00 screws.
- Remove the single 4 mm Phillips #000 screws.

Step 9



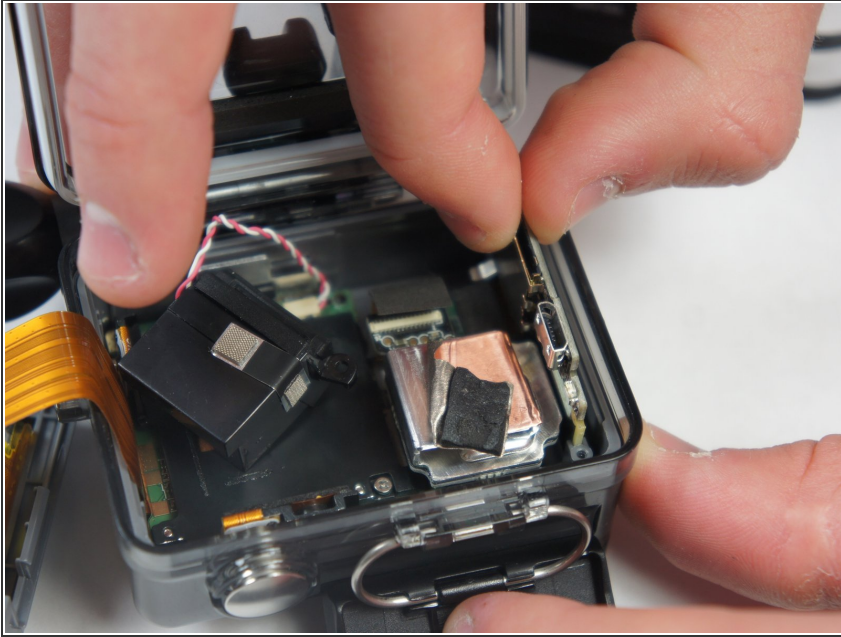
- Remove the image sensor from the camera.
- ⓘ You do not have to unplug the black box to remove the USB/SD chip.

Step 10



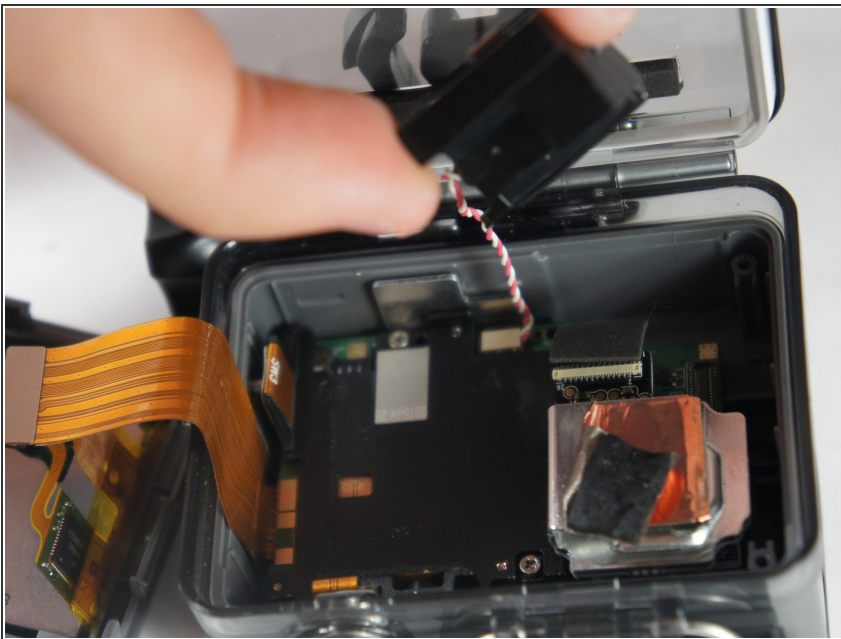
- Grab the edge of the ribbon cable with the tweezers and gently pull until the cable is disconnected from the motherboard.
- ⚠ Be careful when removing the ribbon cable. You must pull gently or you can rip the ribbon off of its contacts.

Step 11



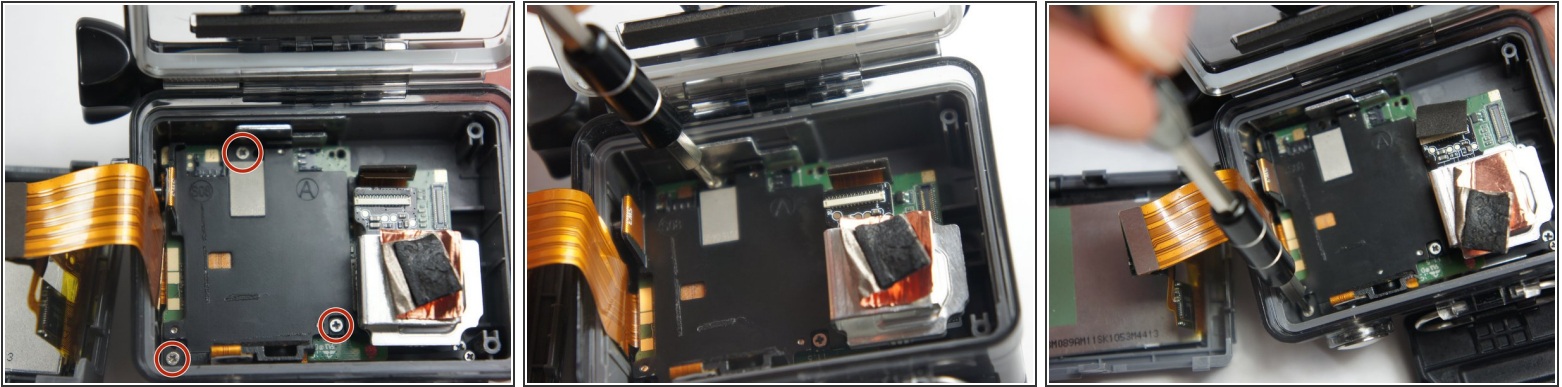
- Gently lift the microSD/Micro USB assembly up and out of the device.

Step 12 — Image Sensor



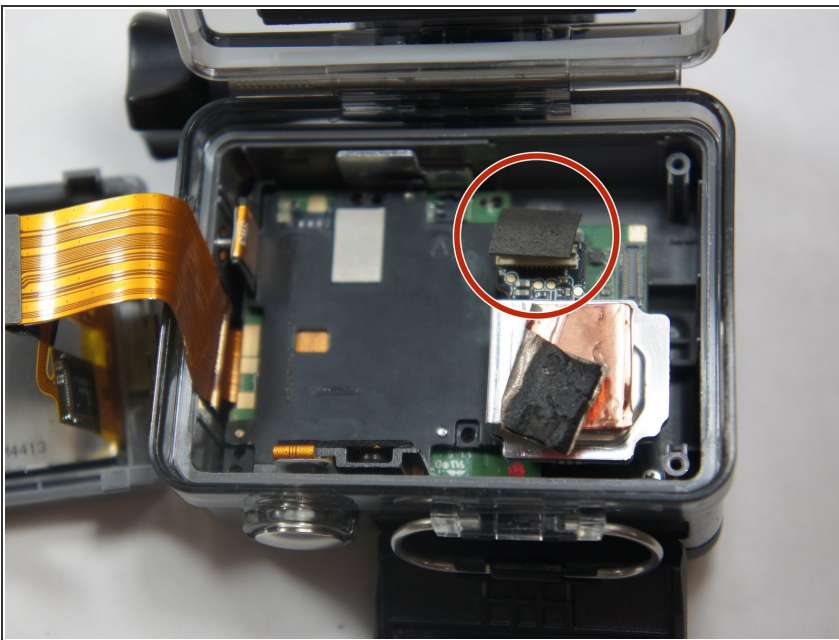
- Use your fingers and gently pull out the sensor from the motherboard by slowly and gradually pulling up on the image sensor box.
- ⚠ Do not yank on the image sensor, it can rip out the wiring or damage the motherboard.

Step 13 — Motherboard



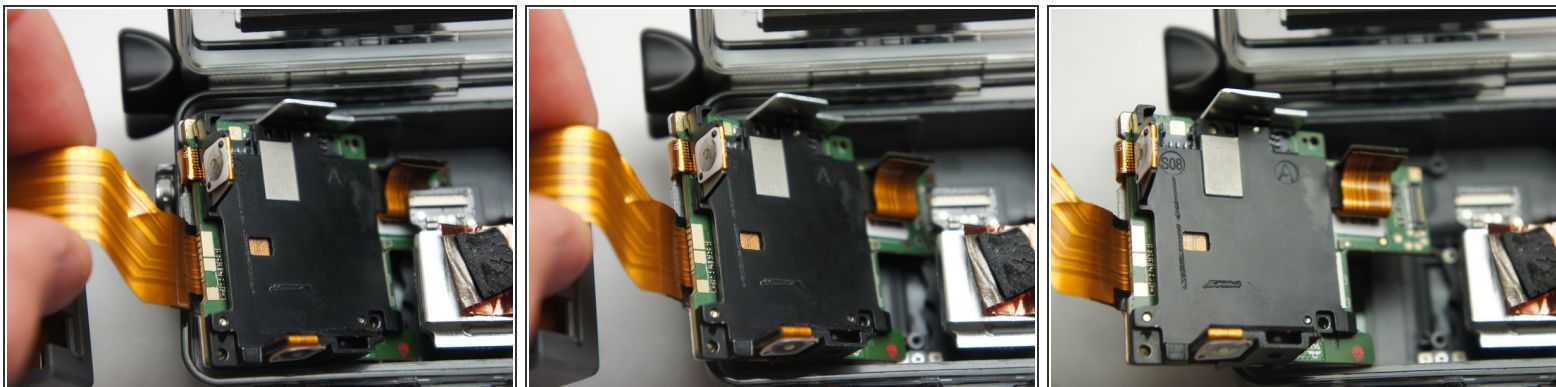
- Remove the three 4 mm Phillips #000 screws securing the motherboard.

Step 14



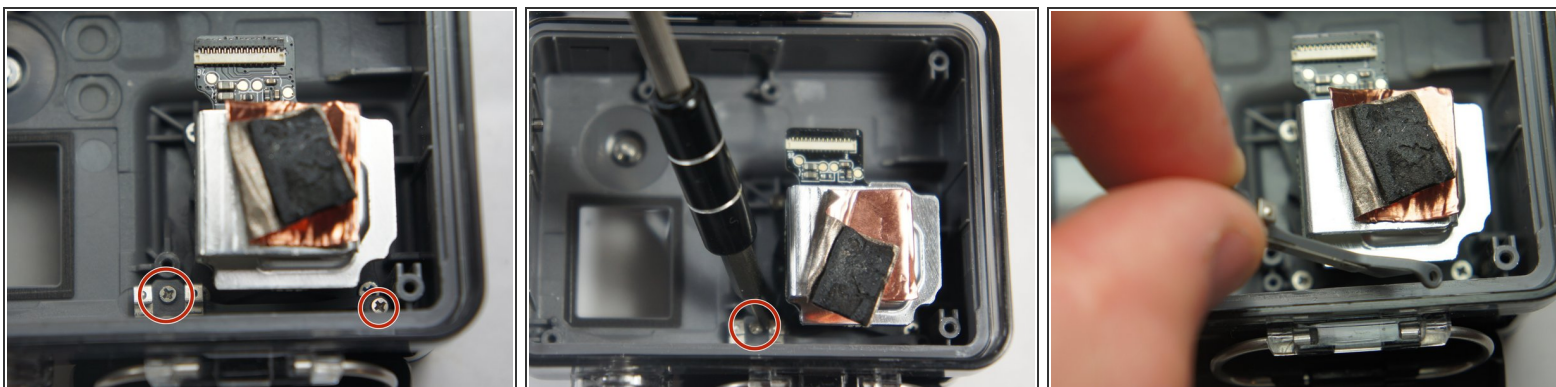
- Use your fingers to gently remove the ribbon connected to the lens.
- ⚠ Be careful when removing the ribbon cable. Pull off gently or you can separate the ribbon from the contacts.

Step 15



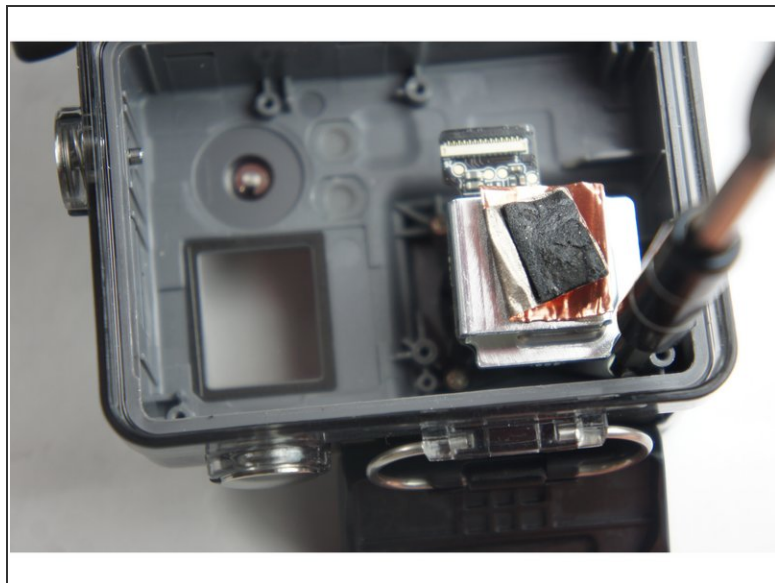
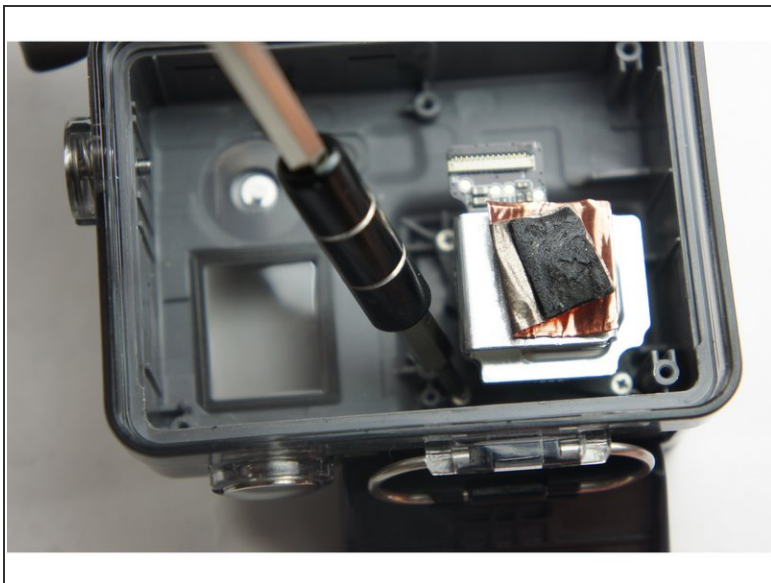
- Use your fingers and carefully pull out the motherboard from under the lens. It may take a little bit of adjusting to get it out.

Step 16 — Lens



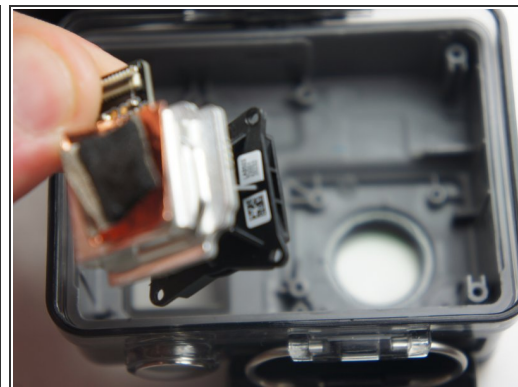
- Remove the two 4 mm Phillips #000 screws securing the top button.

Step 17



- Remove the four 4 mm Phillips #000 screws securing the lens to the case.

Step 18



- Gently lift the lens up and out of the device.

To reassemble your device, follow these instructions in reverse order.