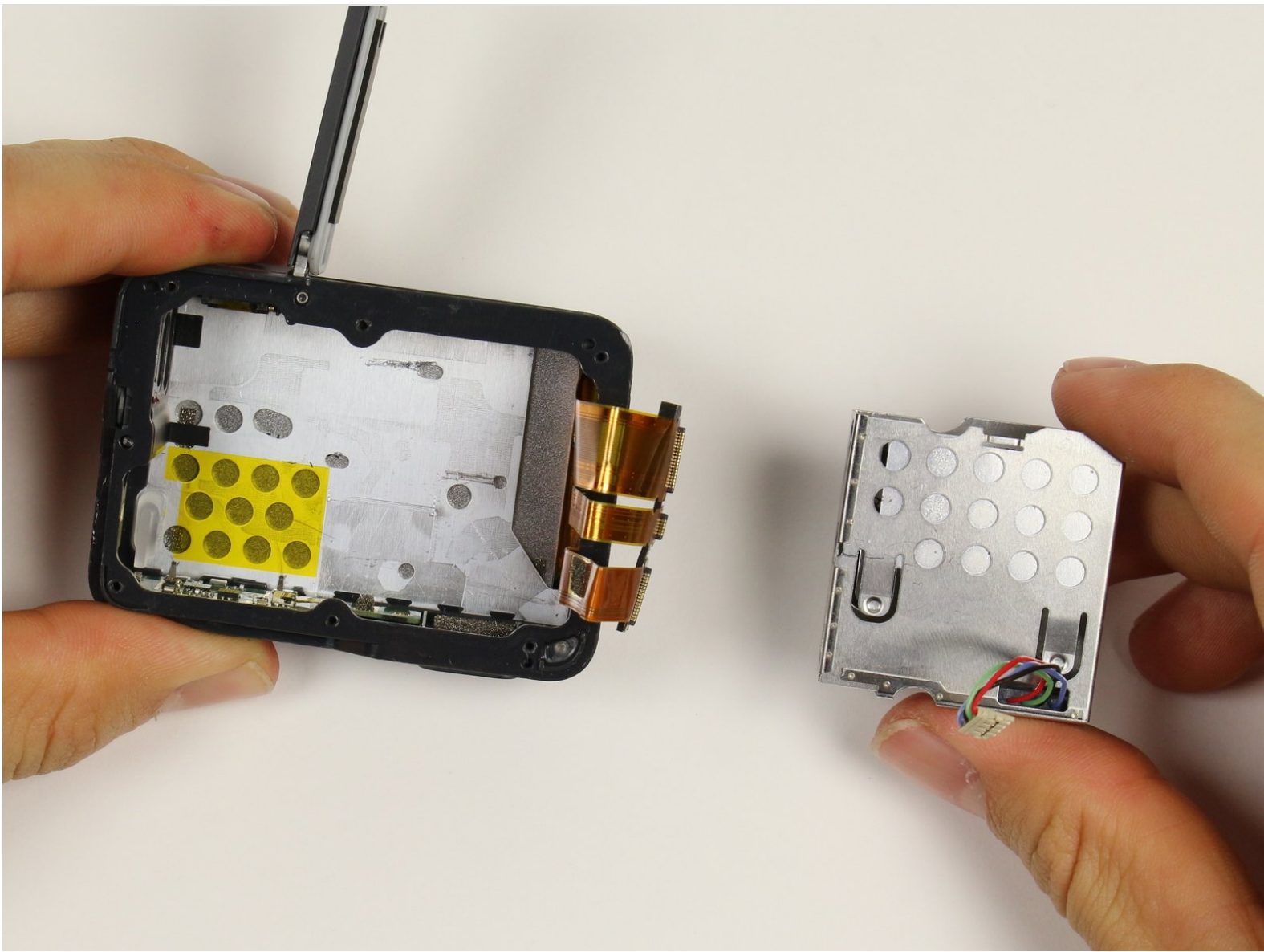




# GoPro Hero5 Black Battery Housing Replacement

This guide will show how to replace the battery housing of your GoPro Hero5 black. If your GoPro won't work with a functional battery, replace the battery housing to bring power back to your device.

Written By: Christopher Adams



## INTRODUCTION

In this guide, you will be removing the battery housing from the back housing. The GoPro Hero5 Black is waterproofed with plenty of adhesives. By completing this guide, you will have to remove the adhesive and your GoPro will no longer be waterproof.



### TOOLS:

- [iOpener](#) (1)
- [T3 Torx Screwdriver](#) (1)
- [iFixit Opening Tools](#) (1)
- [Spudger](#) (1)
- [Tweezers](#) (1)
- [Phillips #000 Screwdriver](#) (1)



### PARTS:

- [GoPro Hero5 Black Battery Enclosure](#) (1)

## Step 1 — Battery



- While pressing the button on the bottom of the GoPro, slide the battery door to the side to pop it open.

## Step 2



- Grab the plastic flap on the battery and pull the battery out.

### Step 3 — Back Housing



- Pull and twist the lens cover right or left until it pops off.
- ⓘ The lens cover is secured tightly and might be difficult to twist off.

### Step 4



- ⓘ This step is not necessary but will make the process of removing the faceplate much easier.
- Refer to the [iOpener instructions](#) for how to heat up and use the iOpener.
- Apply the heated iOpener to the front of the GoPro for a few minutes to melt the adhesive under the faceplate.
- ⚠ The heated iOpener is very hot and can burn your hands. Avoid burns by using towels or gloves to hold the iOpener.



## Step 5



- Starting with the edges, use the spudger to pry off the faceplate.
- ⓘ The faceplate is held down with adhesive and may take a while to get off.


## Step 6



- Remove the six T3 Torx screws.

## Step 7



 Be careful when pulling open the motherboard assembly as it is still connected to the back housing by four cables. The cables may break if stretched.

- Using the spudger, slowly pry open the motherboard assembly from the LCD side of the GoPro.

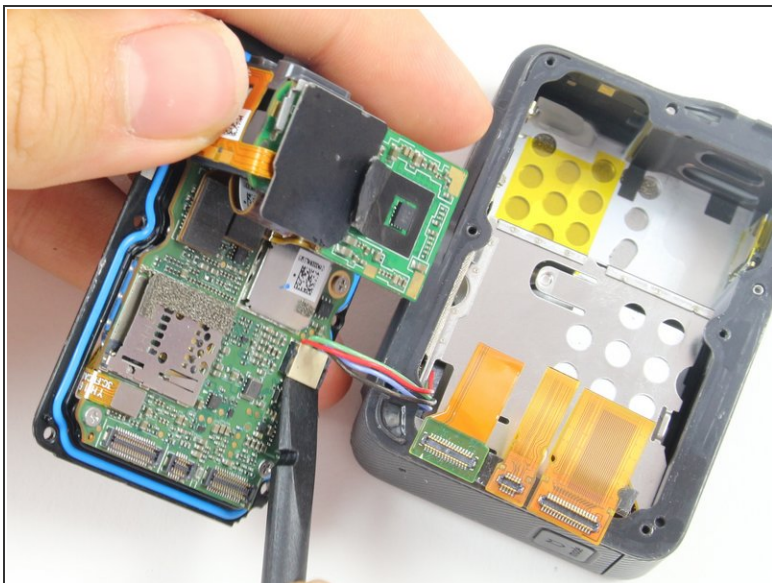
## Step 8



- Use the flat end of a spudger to pry the three ribbon cables connected to the side of the motherboard.

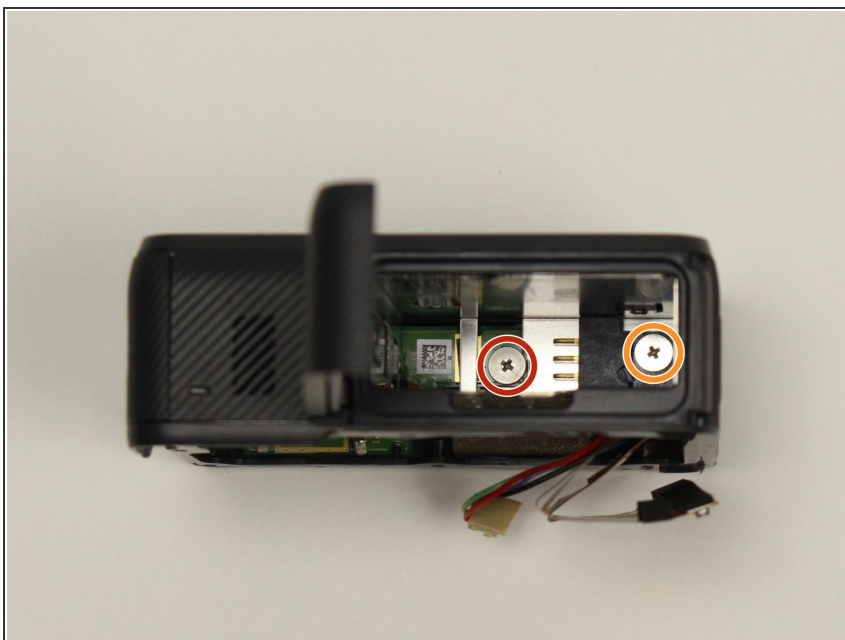


## Step 9



- Use the flat end of the spudger to pry the battery housing power cable straight up from its socket on the motherboard.

## Step 10 — Battery Housing



- Remove the 3mm #000 Phillips screw.
- Remove the 2mm #000 Phillips screw.

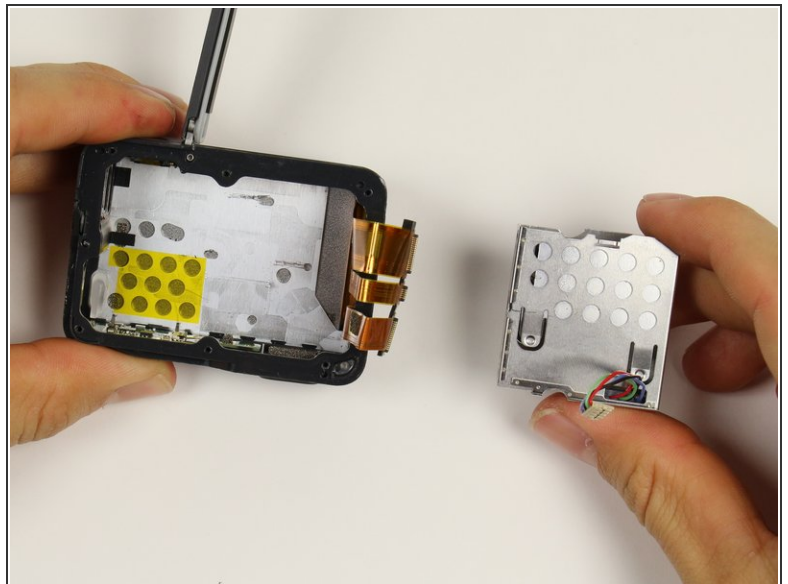
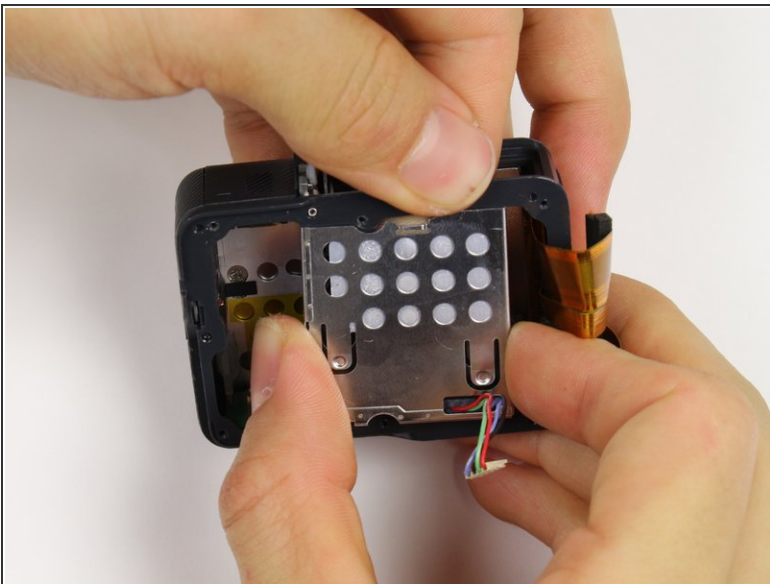


## Step 11



- Use the tweezers to grasp the housing firmly and pull it away from the three ribbon cables.
  - Pull the battery housing until the half circle grooves on the back housing match up with the grooves on the battery housing.
- ⓘ After the screws have been removed from the inside, the battery housing is only held down by adhesive.

## Step 12



- ⓘ Make sure the half circle grooves match up. Otherwise the battery housing will not be able to be pulled out.
- With your fingers, push from the inside of the battery compartment and pull the battery housing out from the back housing.

To reassemble your device, follow these instructions in reverse order.