



# GoPro Karma Arms Replacement

Use this guide to replace a broken arm on your GoPro Karma.

Written By: Kyle Hoff



---

## INTRODUCTION

Replacing the landing gear in your Karma is a relatively easy task, but requires caution because of small screws. There is a specific tool to help remove the clips connecting the arms but it is not necessary at all. Removing the clips without that tool can be tedious and requires a soft touch so be sure to go slow.



### TOOLS:

- [4mm Allen Wrench](#) (1)
  - [2 mm Hex Screwdriver](#) (1)
-

## Step 1 — Battery



- Hook your fingers on the tab and pull out the battery.

## Step 2 — Stabilizer



- Locate stabilizer collar's unlock and lock symbols. Twist the collar counterclockwise to unlock the stabilizer from GoPro Karma body.
- ⓘ Place the GoPro Karma on a stable surface with the legs folded in and the stabilizer facing towards yourself.

### Step 3



- Remove the stabilizer by pulling the entire stabilizer out of the drone body.

### Step 4 — Landing Gear



- ❗ Flip the drone upside down with the landing gear out.
- Remove the four 1.2 cm long hex screws with a Hex 2.0 screwdriver in the four corners of the landing gear



## Step 5



- Push with your thumb and pull up with your fingers to remove the landing gear.

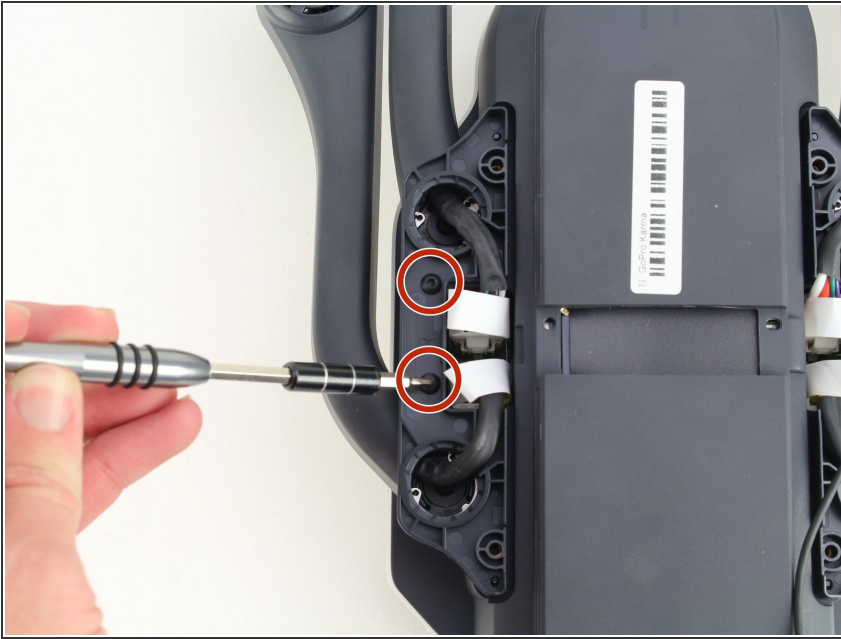
⚠ Caution: The landing gear is connected by a thin cable so do not pull too far away.

## Step 6



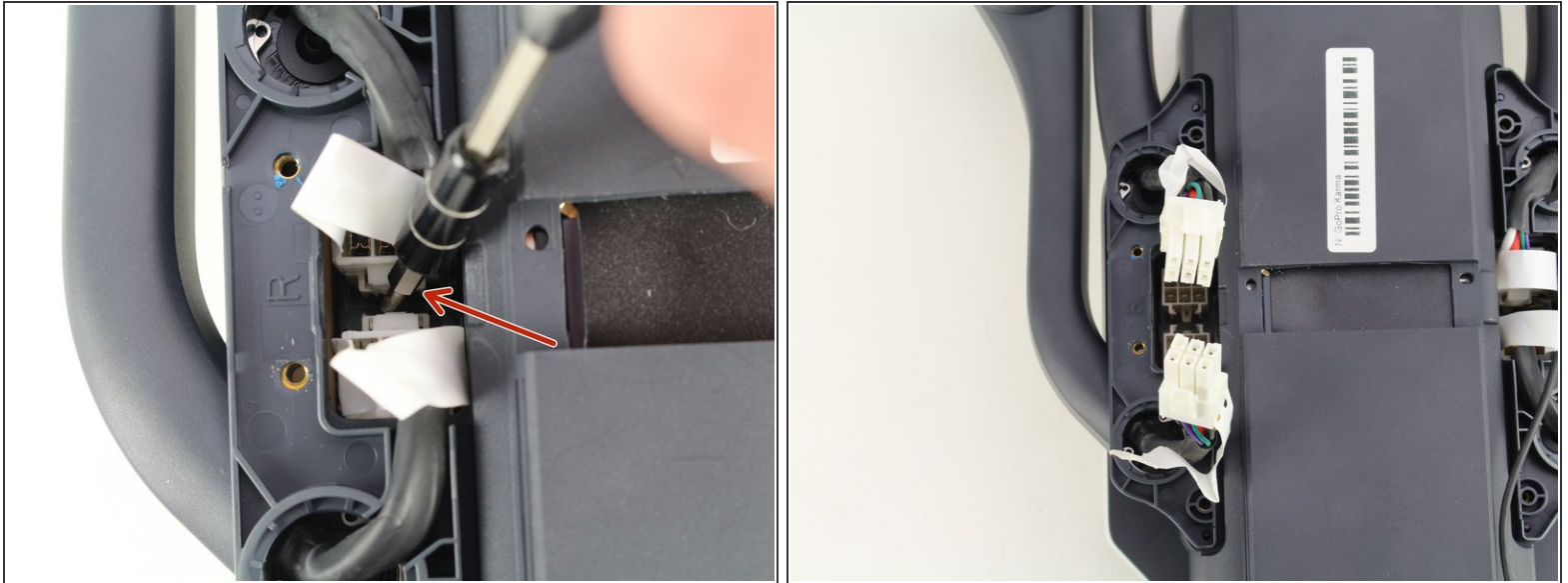
- Flip over the landing gear and locate the cable connector.
- Use your thumbnail to disconnect the cable and free the landing gear.

## Step 7 — Arms



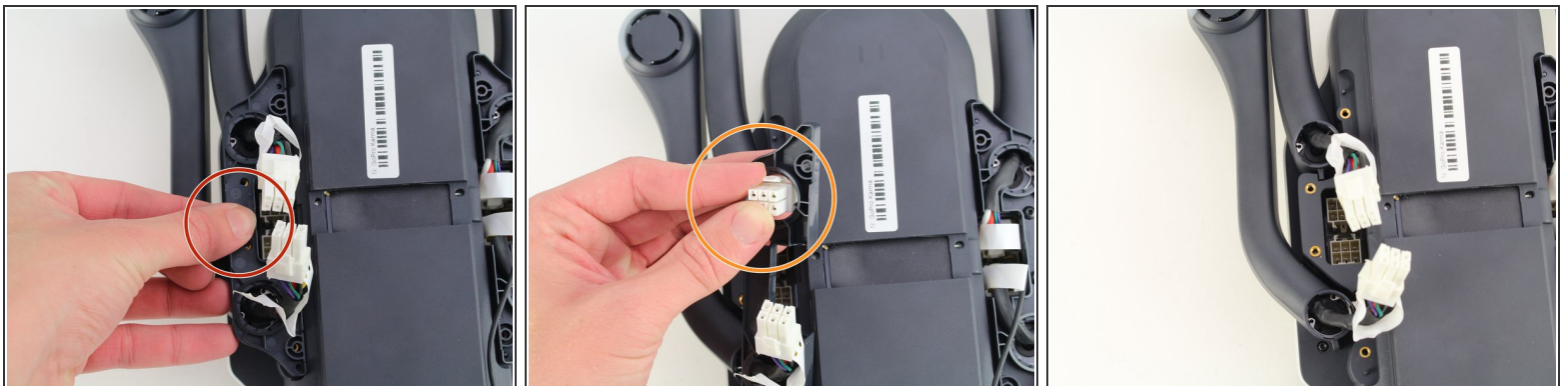
- Remove the two 1.2 cm long hex screws with a Hex 2.0 screwdriver and set them aside.

## Step 8



- Remove both locked connectors by pushing the connector release tool into the hole in the center and pulling up with the white handles.
- ⓘ The connector release tool is only included with the purchase of a replacement arm from the GoPro website.
- If you do not have a connector release tool, use a small screwdriver to push each tab while pulling up with the white handles.

## Step 9

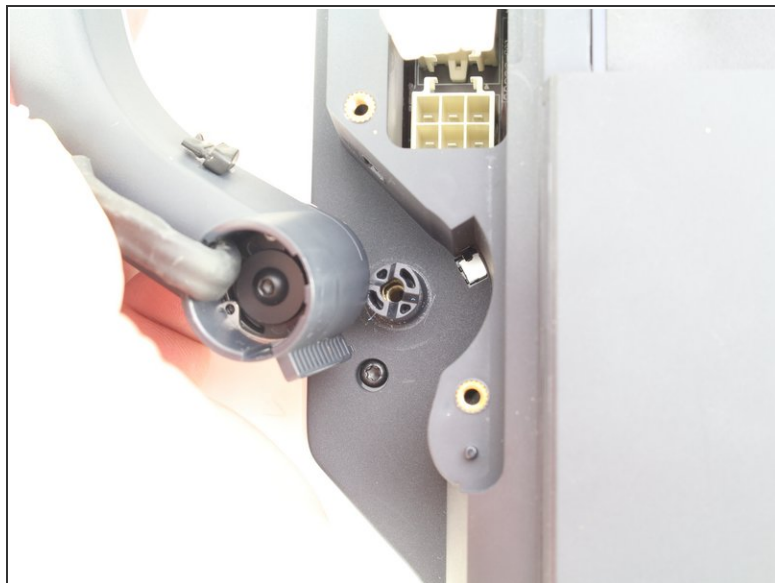
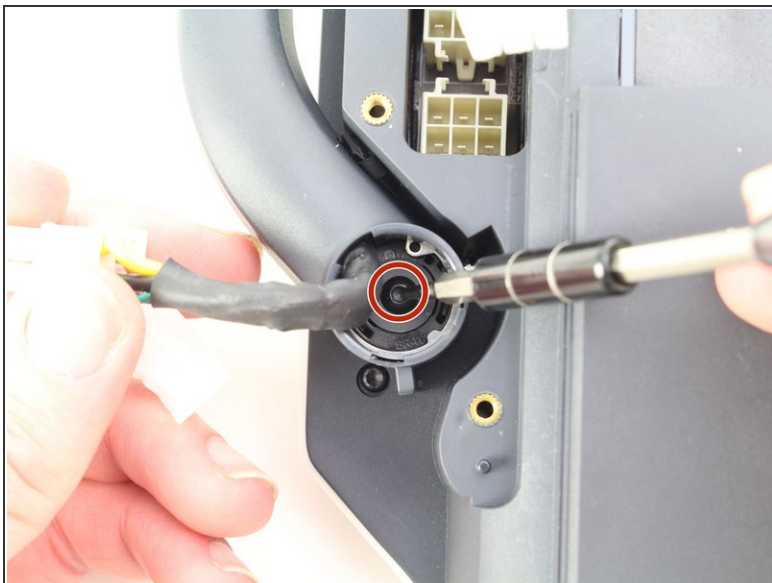


- Remove the cover plate by pulling up on the side.
- Feed each connector through the hole and set aside the cover plate.

This document was generated on 2019-11-14 08:39:37 AM (MST).



## Step 10



- Loosen the 2 cm long hex screw in the arm with a Hex 2.0 screwdriver.
- ⓘ The screw will not come out but loosen it until it can rotate easily.
- Pull up and off the broken arm.

To reassemble your device, follow these instructions in reverse order.