



Google Home Mini Teardown

Teardown, Google Home Mini build and components.

Written By: Norman Schleicher



INTRODUCTION

This guide will show you how to open the Google Home Mini and disassemble the individual components.



TOOLS:

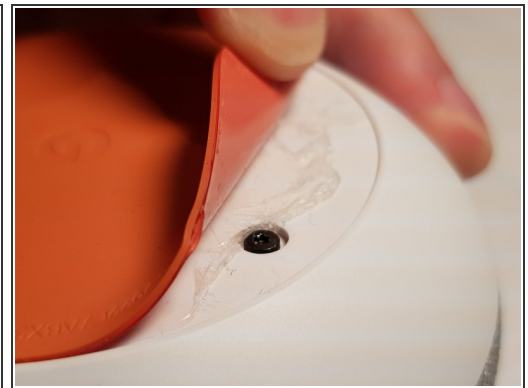
- [Spudger](#) (1)
 - [Metal Spudger](#) (1)
 - [T6 Torx Screwdriver](#) (1)
 - [T9 Torx Screwdriver](#) (1)
-

Step 1 — Google Home Mini Teardown



- The Google Home Mini opens from the bottom. There is an orange plastic disc with a piece of orange rubber attached to it. The piece of orange plastic is glued to the device.

Step 2



- Use the metal spudger and place it between the housing and the rubberized plastic disc.
- (i) NOTE:** You need to set the spudger to go under the plastic disk, not between the rubber and the plastic disk. The Google Home Mini opens from the bottom. This is a rubberized plastic disc glued to the device.

Step 3



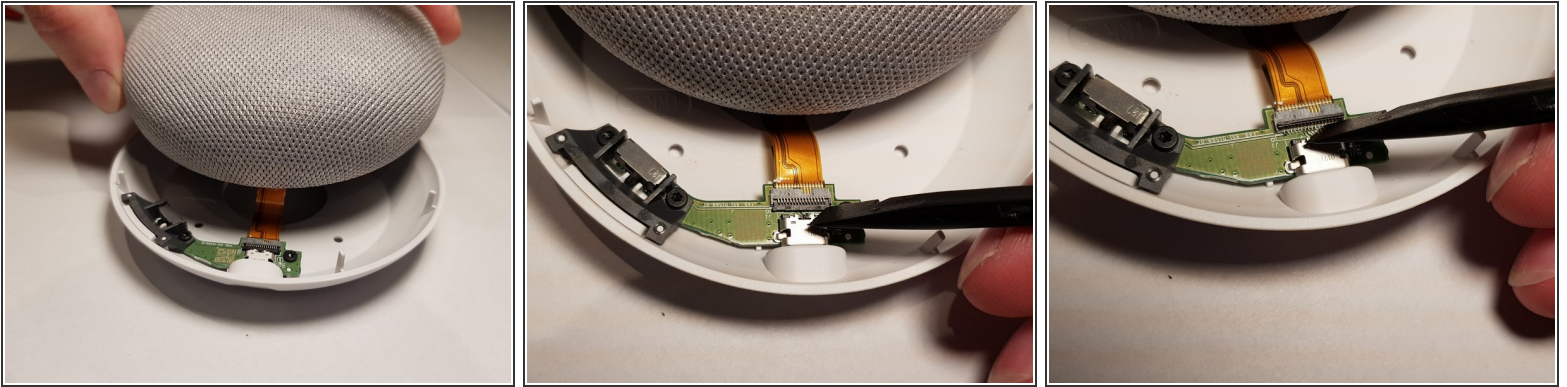
- Now move around with the spudger under the plastic plate until the adhesive has dissolved on the entire surface.
- Next, carefully peel the plate off.

Step 4



- Now remove the 4 screws.
- 4 x 6mm T6 screws
- ⓘ If there is still glue over the screw heads you can easily pierce with the screwdriver. Do not remove glue, as the bottom will not hold otherwise later.

Step 5



- After turning the device over, you can gently lift the fabric-covered top.

⚠ While keeping the device close to the device as in the picture, first disconnect the ribbon cable from the connector with a spudger.

Step 6



- Now loosen 4 more screws on the top of the unit
- 4 x 8mm T9 screws

Step 7



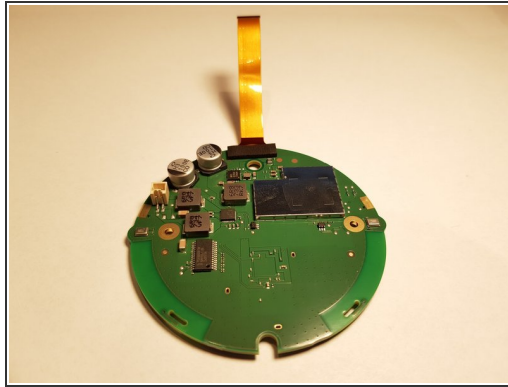
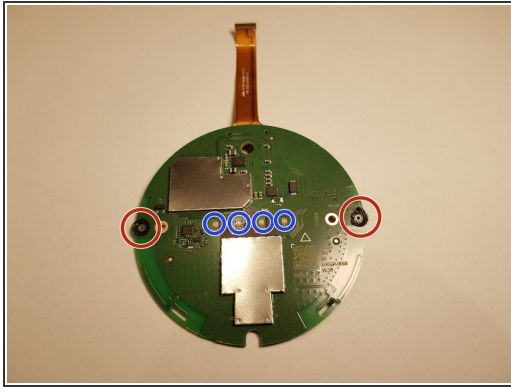
- Now remove the speaker cable with a spudger.
- Next, loosen 4 more screws
- 4x 9mm T6 screws

Step 8



- Now remove the metal insert and carefully lift the board with a spudger
- ⓘ The board is glued to 2 locations lightly, but can still be removed easily.

Step 9



- Motherboard
- Microphones
- Status LEDs