



# Google Home Mini USB Power Port Replacement

A guide on how to replace the USB charging port on Google Home Mini.

Written By: Mia Sulaiman



---

# INTRODUCTION

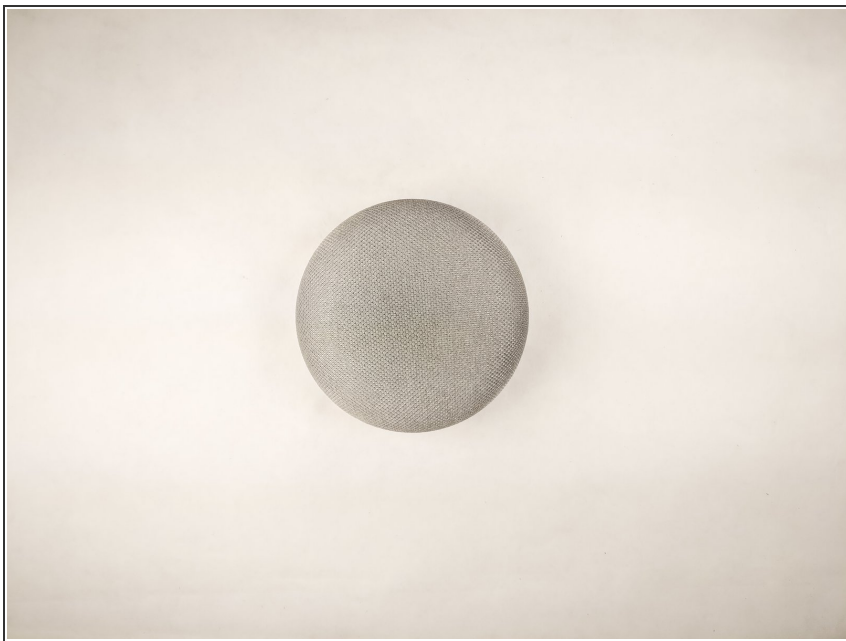
A guide to change Google Home Mini USB power port.



## TOOLS:

- [Tweezers](#) (1)
  - [T6 Torx Screwdriver](#) (1)
-

## Step 1 — Google Home Mini Disassembly



- Place device on a flat surface.

## Step 2



- Remove the rubber bottom as per the [Google Home Mini teardown guide](#).
- Remove the four 7mm T6 Torx screws from the bottom.

## Step 3



- Remove the lower half of the device.

⚠ Be careful as a black ribbon cable connects the two halves together.

## Step 4



- Using a pair of tweezers, unlatch the Zero Insertion Force (ZIF) fastener that connects the ribbon cable to the board.

ⓘ Flip up and push the ZIF fastener towards outside of the lower case to loosen it.

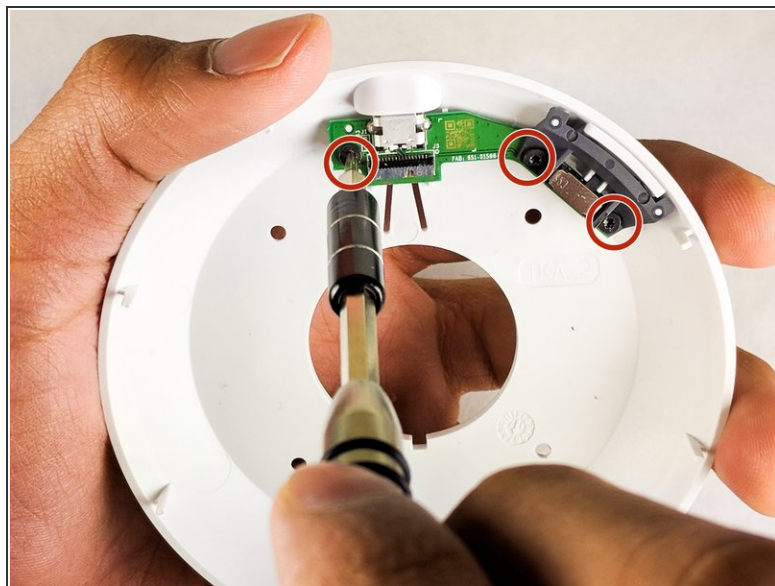


## Step 5



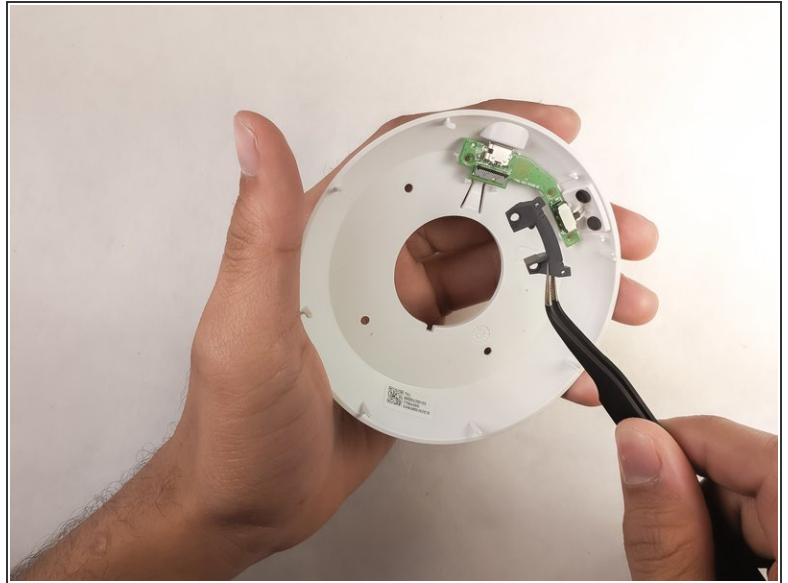
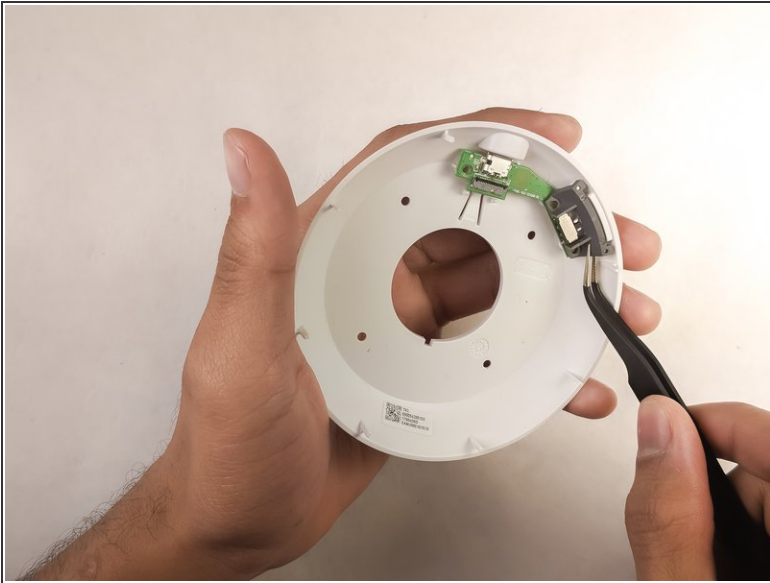
- Pull the ribbon cable off.

## Step 6 — USB Power Port



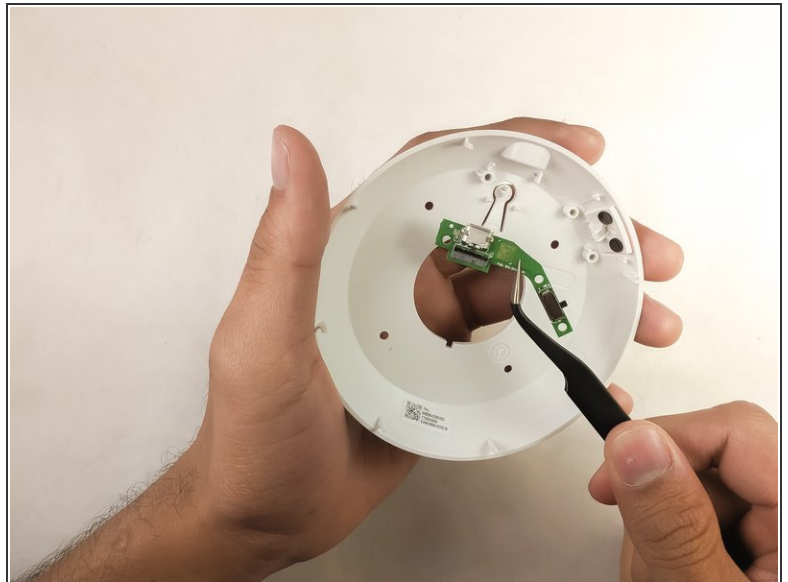
- Remove the three 5.3mm T6 Torx screws from the board.

## Step 7



- Remove the black metal plate from the board.

## Step 8



- Remove the board.

To reassemble your device, follow these instructions in reverse order.