



Written By: Jake Lucas



# INTRODUCTION

The Google Nest Wifi Point is a Wi-Fi range extender that doubles as a smart speaker with Google Assistant.

## Step 1 — Opening the Google Nest Wifi Point



- The Google Nest Wifi Point opens from the bottom
- Use the spudger to completely remove the rubber layer. Starting at the power button provides the best leverage.
- Remove the adhesive layer to expose the 4x T4 screws

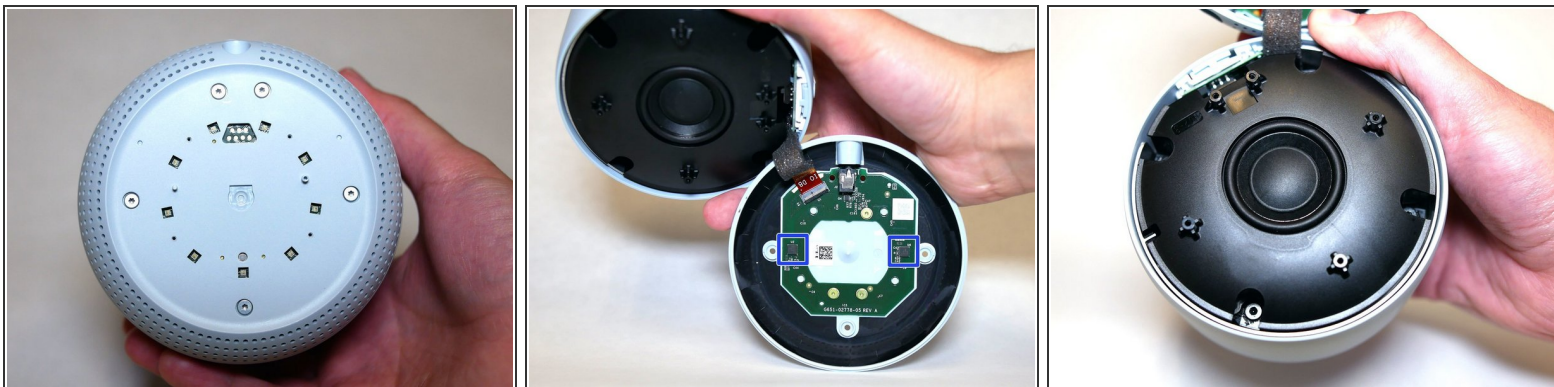
## Step 2 — Removing the bottom plate



- Remove the 4x T4 screws from the bottom plate of the Google Nest Wifi Point
- Use the spudger to pry off bottom cover of unit.

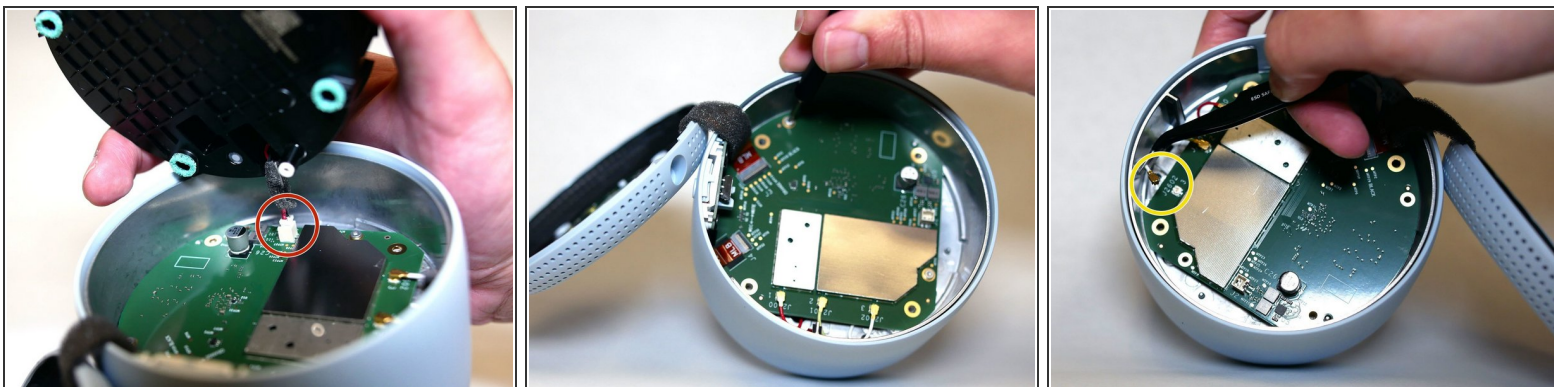


### Step 3 — Removing the bottom portion



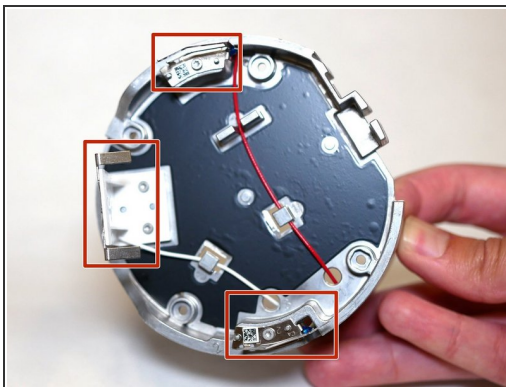
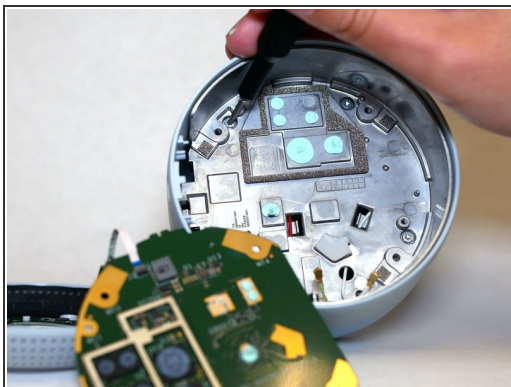
- The bottom portion of the unit is held in place with 5 x T6H screws. Note the 9 LEDs on the Google Nest Wifi Point
- Once removed, the speaker driver can be exposed as well as the first board that contains 2x LED drivers - **Texas Instrument LP5018**
- The speaker is held in place with 4x T8H screws

### Step 4 — Removing the speaker and main board



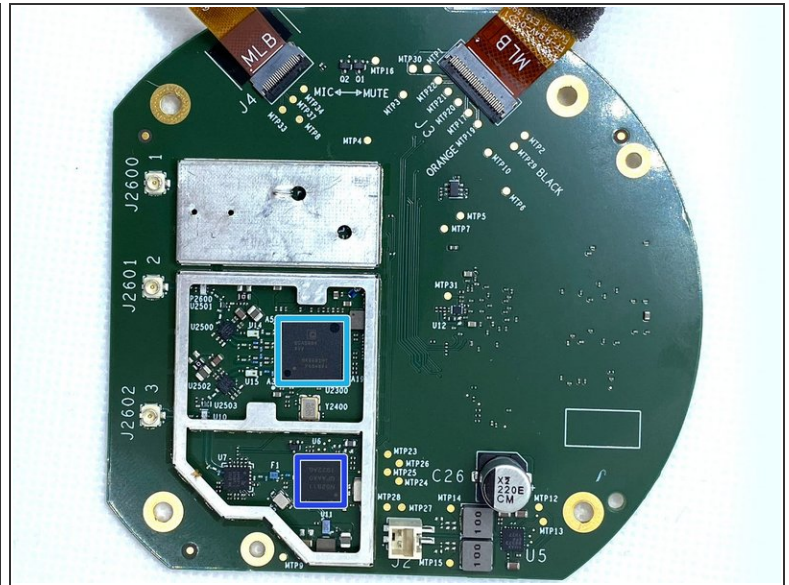
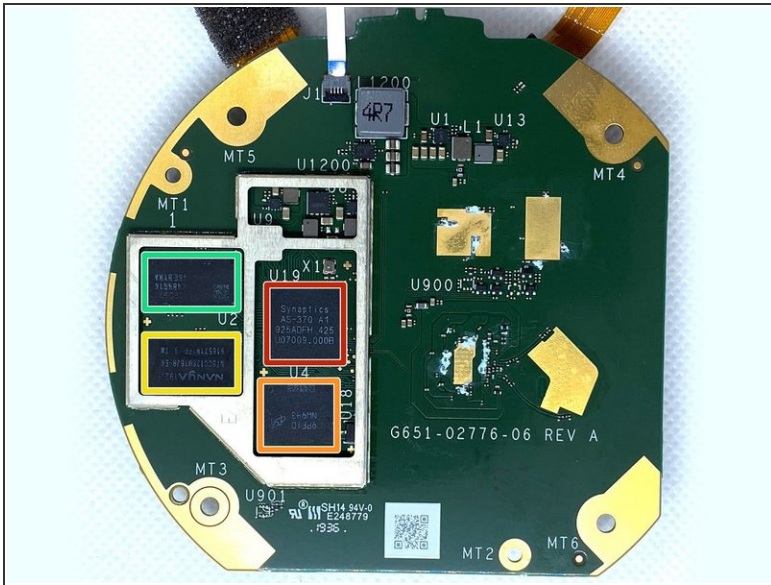
- Disconnect the speaker from the main board
- The main board is connected to a heatsink/sub-chassis with 2x T6H screws
- Disconnect the 3 antenna wires from the main board

## Step 5 — Removing the sub-chassis



- The sub-chassis is held in place with 4x T7H screws
- The sub-chassis also houses 3 antennas
- The top board contains 3 DMICs as well as a touch sensor - **Cypress CY8CMBR3108**

## Step 6 — Main board components



- Synaptics AS-370 SoC
- Micron MT29F4G08ABAF4H4-IT NAND Flash Memory
- Nanya Technology NT5CC128M16JR-EK DRAM
- Samsung K4B4G1646E-BYMA000 DRAM
- Qualcomm QCA9886 WLAN SoC
- Nordic Semiconductor N52811 QFAAA0 1922AG Bluetooth SoC

To reassemble your device, follow these instructions in reverse order.