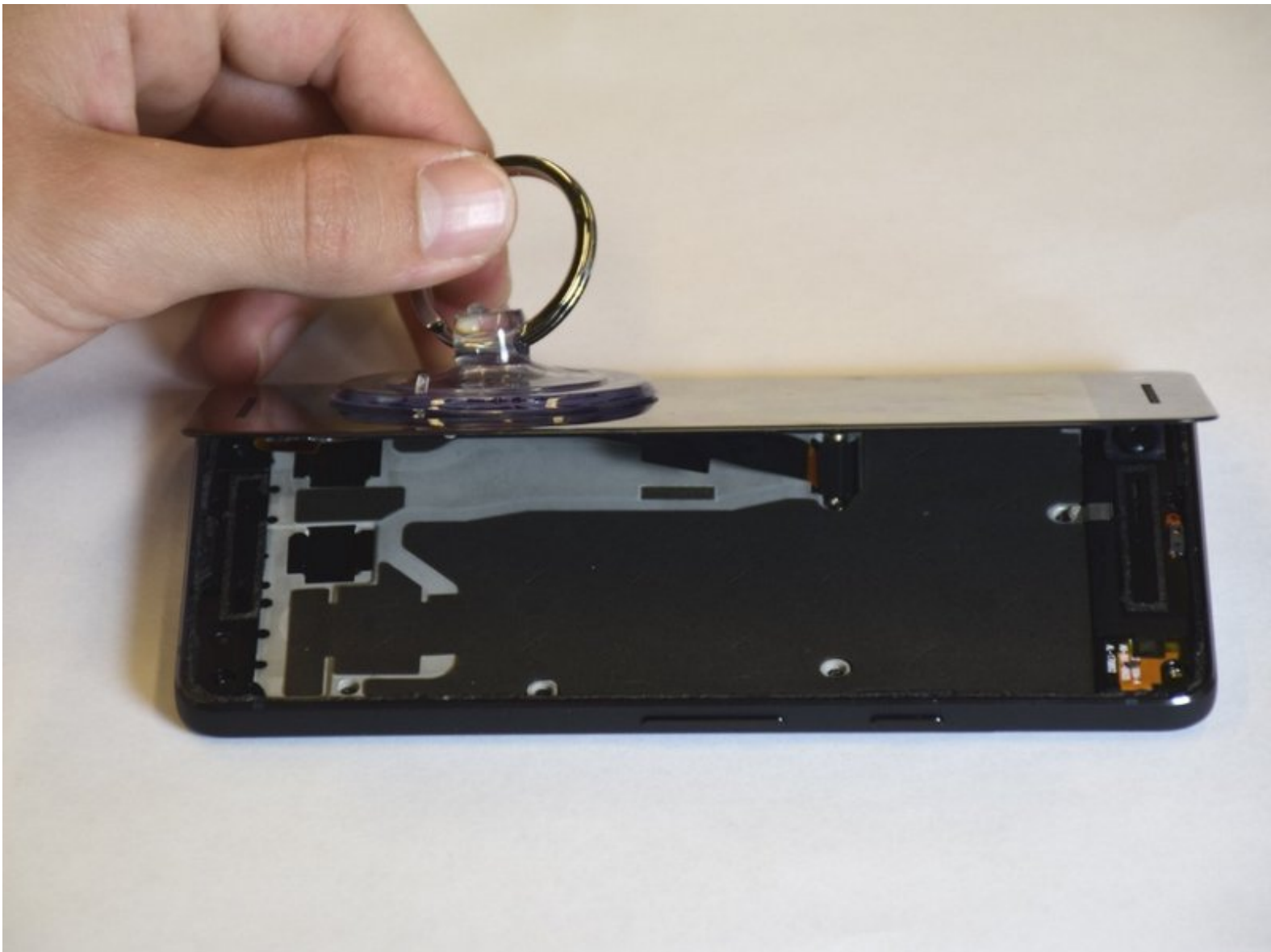




Google Pixel 2 Display Replacement

How to remove the display screen from the front of the Google Pixel 2.

Written By: Monica Andres



INTRODUCTION

Since the display acts as a barrier to the hardware, it is important to remove it before replacing other components. Due to its simplicity, this guide only requires a few steps and tools to remove the display.


TOOLS:

- [Suction Handle](#) (1)
 - [Tweezers](#) (1)
 - [T4 Torx Screwdriver](#) (1)
 - [iOpener](#) (1)
-

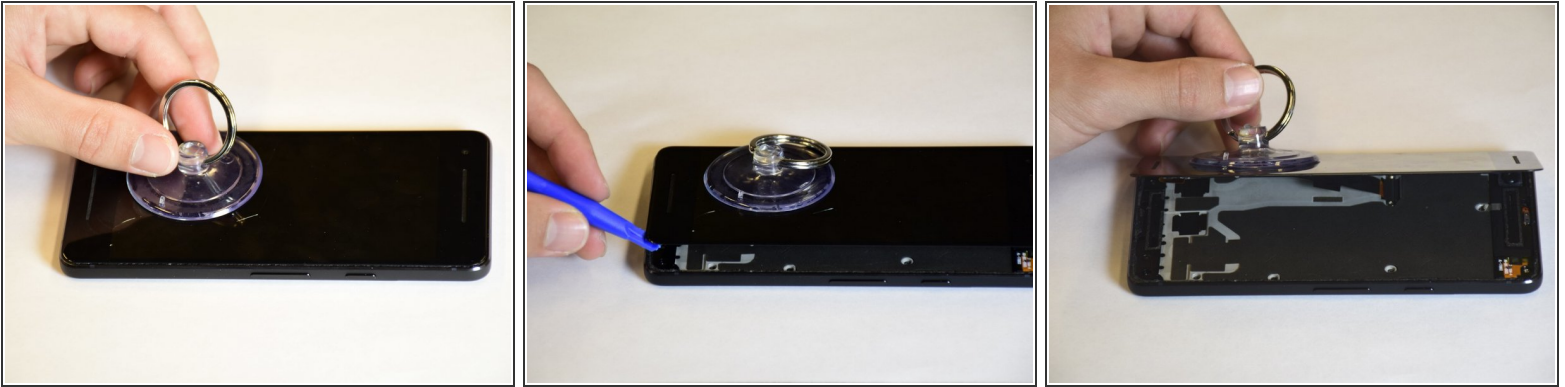
Step 1 — Display



- Heat up the iOpener in the microwave for 30 seconds.
- Place the iOpener clear-side down on each edge of the phone for approximately 30 seconds.
- Place the iOpener on top of the screen for an additional 30 seconds.

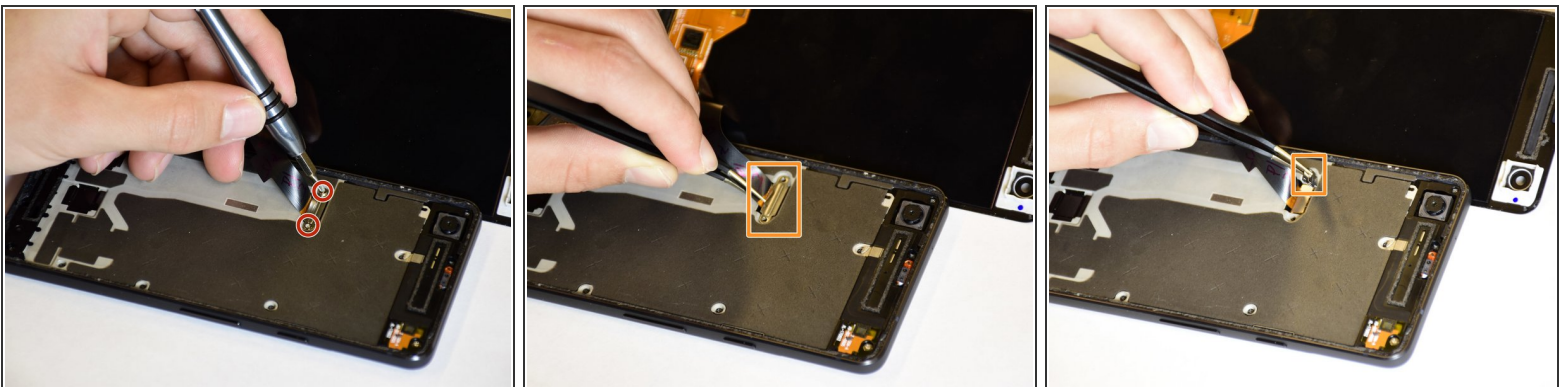
 Be careful with the iOpener as it will get extremely hot.

Step 2



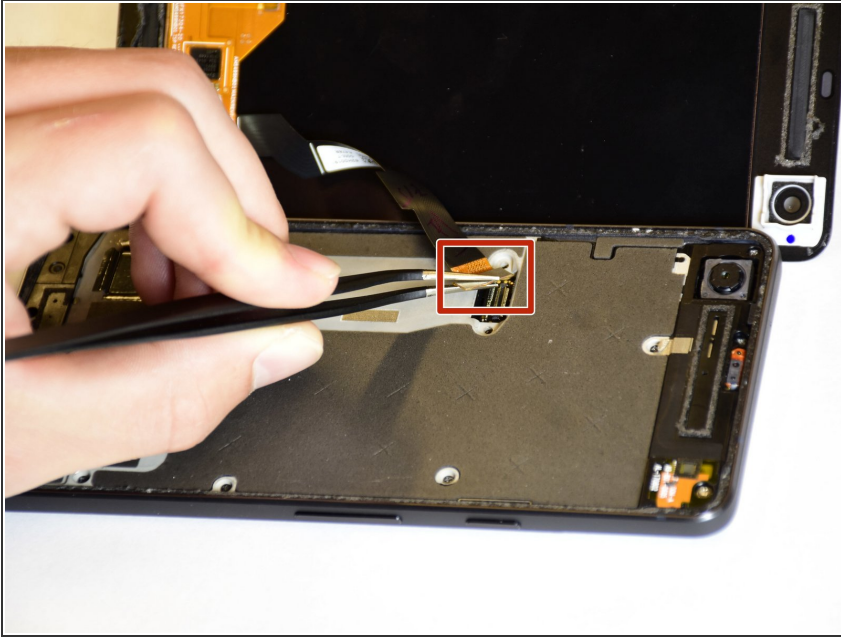
- Attach the suction cup to the display by placing it on top of the display and pushing down on the top of the cup until it is flat.
- Separate the display and the device by inserting the plastic opening tool between them and sliding the plastic opening tool along the perimeter of the display.
- ⓘ It is normal to hear popping noises as the plastic opening tool breaks the connection between the display and the device.
- Remove the display from the device by grabbing the ring of the suction cup and pulling up.

Step 3



- Remove the T4 4.0-mm screws from the latch under the display by turning the screwdriver counterclockwise.
- Pull the latch off of the device by grabbing it with the tweezers and pulling up.

Step 4



- Remove the connector underneath the latch by grabbing it with the tweezers and lifting up.
- ⓘ It is normal to hear a popping noise during this step.
- ★ When reassembling, simply use your finger to pop this piece back into place by pushing it down into the device.

To reassemble your device, follow these instructions in reverse order.