



Google Pixel 3 Battery Disconnect

Prerequisite guide only! Removes the charging coil and disconnects the battery for further disassembly.

Written By: Arthur Shi



INTRODUCTION

Prerequisite guide only! This guide is part of an another procedure and is not meant to be used alone.

TOOLS:

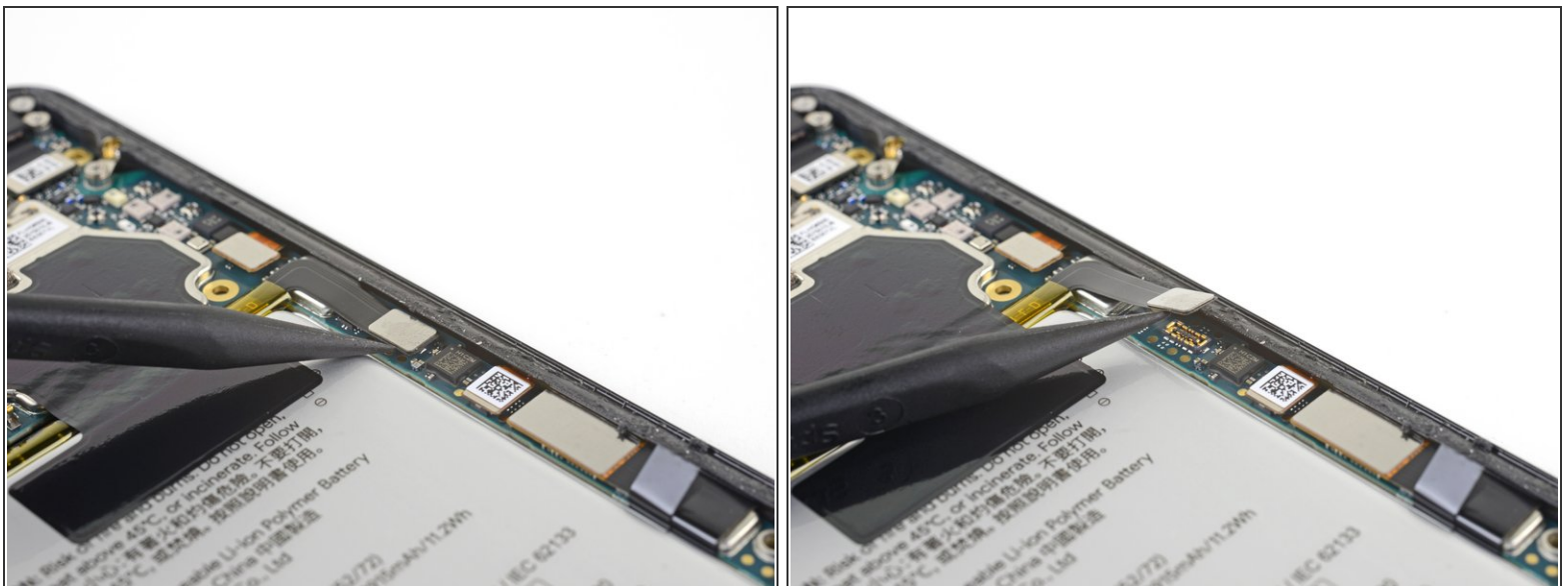
- [Phillips #000 Screwdriver](#) (1)
 - [Spudger](#) (1)
-

Step 1 — Wireless coil removal



- Remove the five Phillips screws securing the wireless charging coil:
 - Two 1.9 mm screws
 - Two 4.2 mm screws
 - One 4.3 mm screw
- Remove the wireless charging coil.

Step 2 — Battery disconnect



- Use the point of a spudger to pry up and disconnect the battery connector from its socket near the right edge of the phone.

To reassemble your device, follow these instructions in reverse order.