



Google Pixel 3 Battery Replacement

This guide shows how to remove and replace a worn battery for the Google Pixel 3.

Written By: Arthur Shi



INTRODUCTION

Follow this guide to remove and replace a worn battery for the Pixel 3. If your battery is swollen, [take appropriate precautions](#).

For your safety, discharge your battery below 25% before disassembling your phone. This reduces the risk of a dangerous thermal event if the battery is accidentally damaged during the repair.



TOOLS:

- [iOpener](#) (1)
- [Suction Handle](#) (1)
- [iFixit Opening Picks set of 6](#) (1)
- [Phillips #000 Screwdriver](#) (1)
- [Isopropyl Alcohol](#) (1)
- [Spudger](#) (1)
- [Tweezers](#) (1)



PARTS:

- [Google Pixel 3 Replacement Battery](#) (1)
- [Google Pixel 3 Battery Adhesive Strips](#) (1)
- [Precut Adhesive Card](#) (1)

Step 1 — Back Cover



- [Heat an iOpener](#) and apply it to the bottom of the phone for one minute.
- When prying above the power button, be careful not to insert the pick too deeply, or you will damage the fingerprint sensor cable.

Step 2



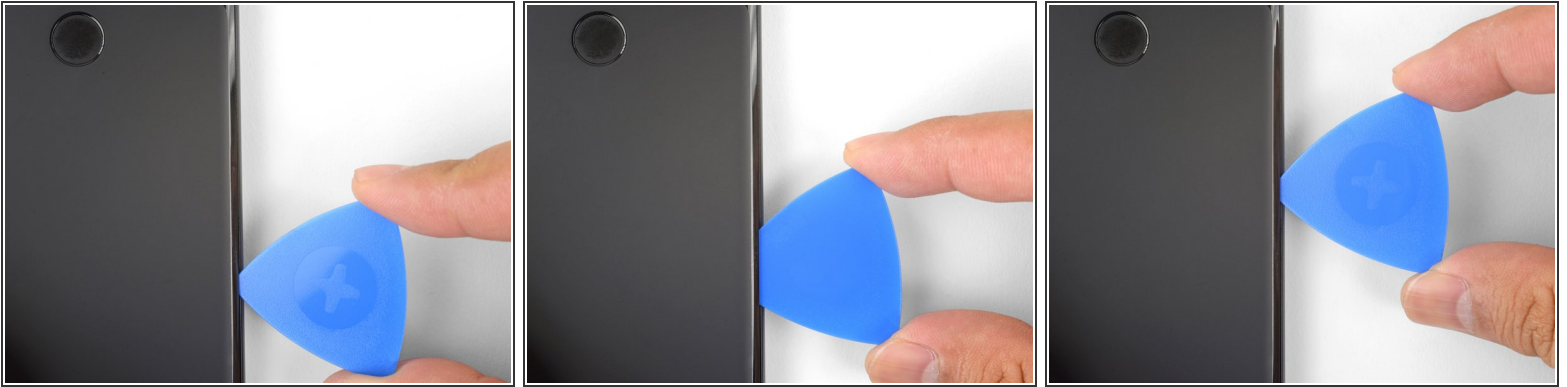
- Apply a suction cup to the heated bottom edge of the phone.
 - ❗ If your back cover is badly cracked, covering it with a layer of clear packing tape may allow the suction cup to adhere.
- Lift on the suction cup with strong, steady force to create a gap.
 - ❗ Depending on how aged your phone is, this may take significant force. If you are having trouble, apply more heat and try again.
- Insert an opening pick into the gap.

Step 3



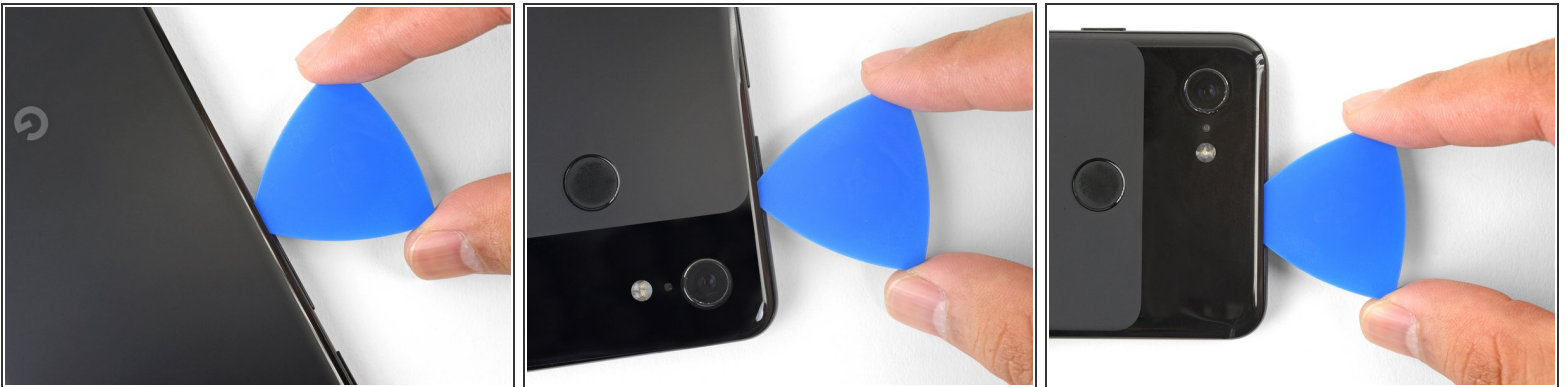
- Slice the adhesive along the bottom edge of the phone and around the right corner.
- Leave a pick in the bottom edge to prevent the adhesive from re-sealing.

Step 4



- Heat the right edge with an iOpener and continue slicing the adhesive with an opening pick.
- ⓘ The adhesive can be very gummy. Push the pick in and out in a sawing motion to help with slicing.

Step 5



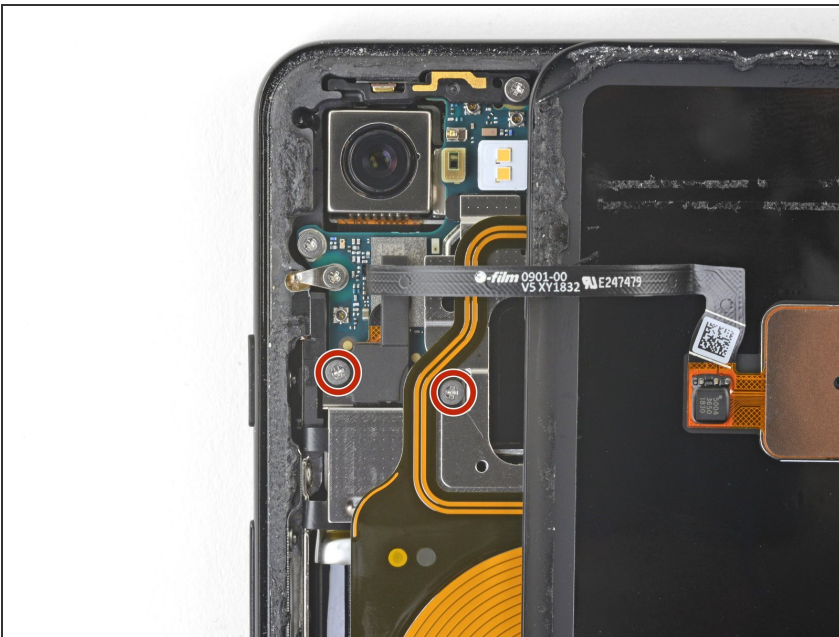
- Continue heating and slicing through the rest of the phone perimeter. Leave a pick in each edge to prevent the adhesive from resealing.
- When slicing above the power button, do not insert the pick more than halfway in to avoid damaging the fingerprint sensor cable.

Step 6



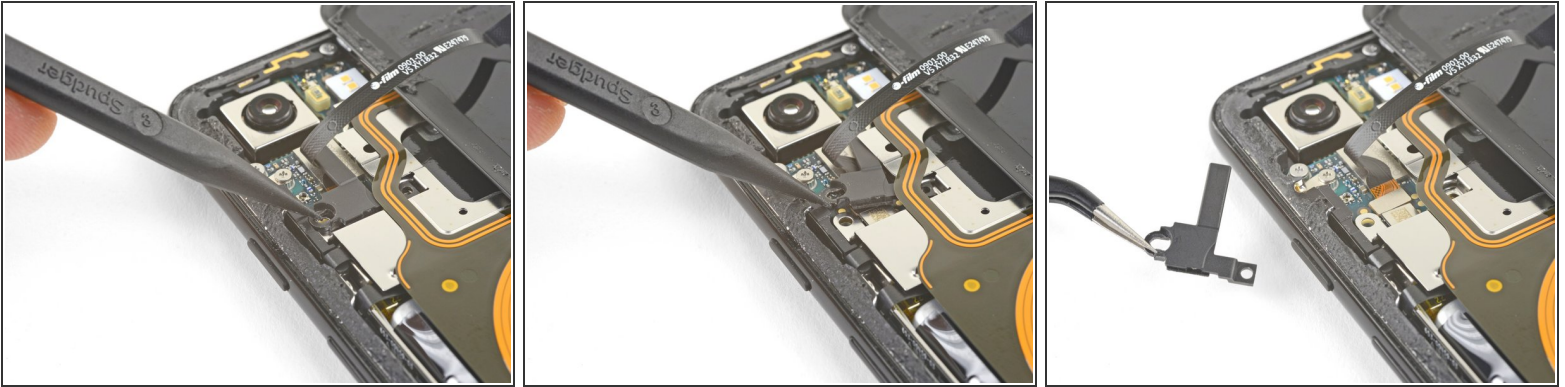
- Once you have sliced around the perimeter of the phone, carefully lift the **left edge** of the back cover.
- ⚠ Do not attempt to remove the back cover. It is still attached to the phone by the fingerprint sensor cable.
- Flip the back cover along its long axis and rest it so that the fingerprint sensor cable is not strained.

Step 7



- Remove the two 4.1 mm long Phillips screws securing the fingerprint connector bracket.
- ☑ During reassembly, be careful not to over-tighten these screws, or you may damage your display.

Step 8



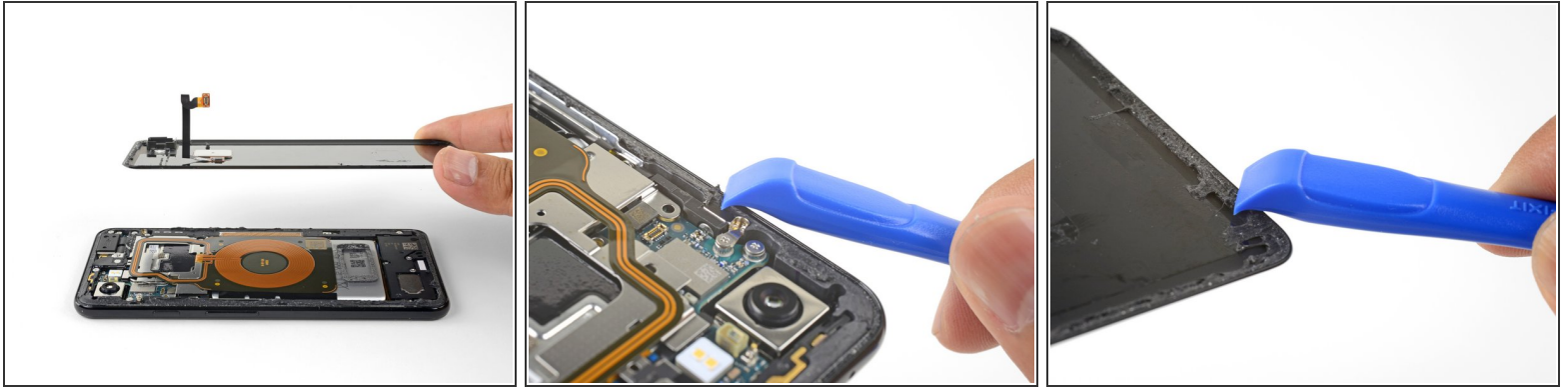
- Use the point of a spudger to slide the fingerprint connector bracket out from under the NFC coil.
- Remove the fingerprint connector bracket.

Step 9



- Use the point of a spudger to pry up and disconnect the fingerprint connector from its socket.
 - ❗ When you disconnect connectors like these, be careful not to dislodge the small surface-mounted components surrounding the socket.
- ☑ To re-attach [press connectors](#) like this one, carefully align and press down on one side until it clicks into place, then repeat on the other side. Do not press down on the middle. If the connector is misaligned, the pins can bend, causing permanent damage.

Step 10



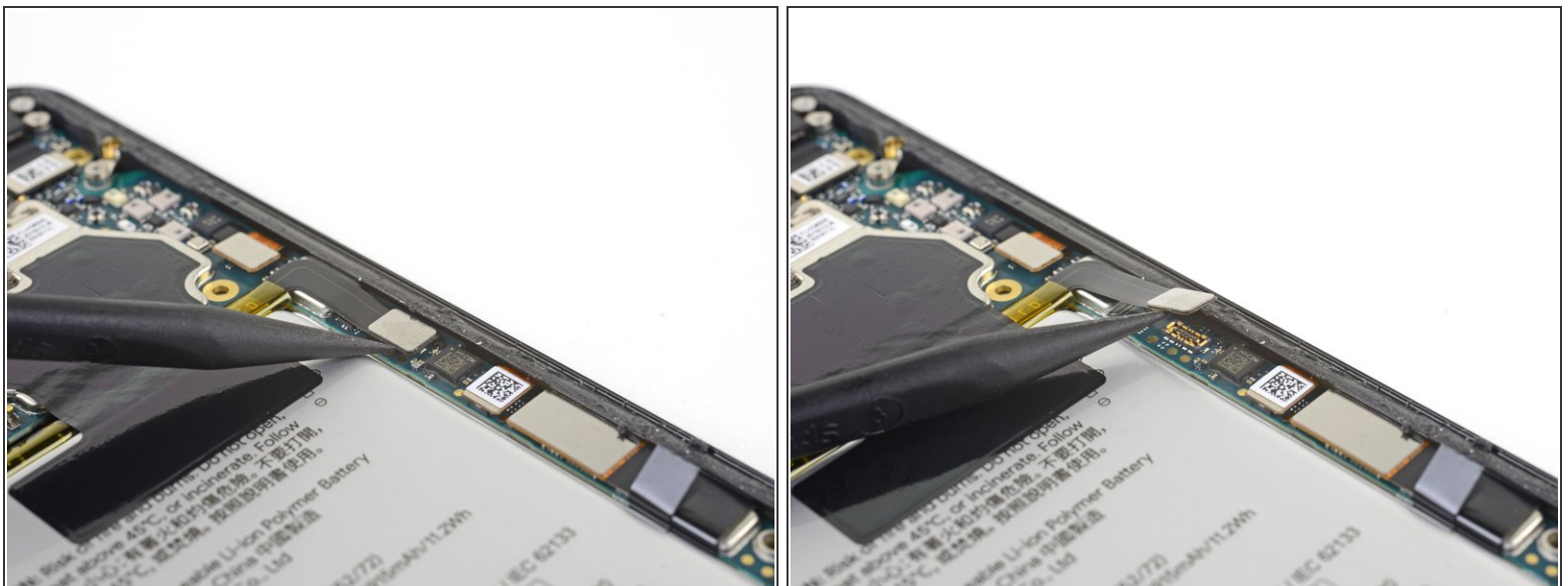
- Remove the back cover.
- ✦ Before you install a replacement back cover, be sure to remove all adhesive residue from the phone frame. Use an opening tool to scrape and high concentration isopropyl alcohol to clean the surface.
- ✦ If you are re-using the back cover, be sure to clean off any adhesive, and apply new back cover adhesive.
- ✦ If you are installing a replacement back cover, be sure compare it with the original part. Transfer any remaining parts (such as the flash diffuser) over to your replacement part.

Step 11 — Wireless coil removal



- Remove the five Phillips screws securing the wireless charging coil:
 - Two 1.9 mm screws
 - Two 4.2 mm screws
 - One 4.3 mm screw
- Remove the wireless charging coil.

Step 12 — Battery disconnect



- Use the point of a spudger to pry up and disconnect the battery connector from its socket near the right edge of the phone.

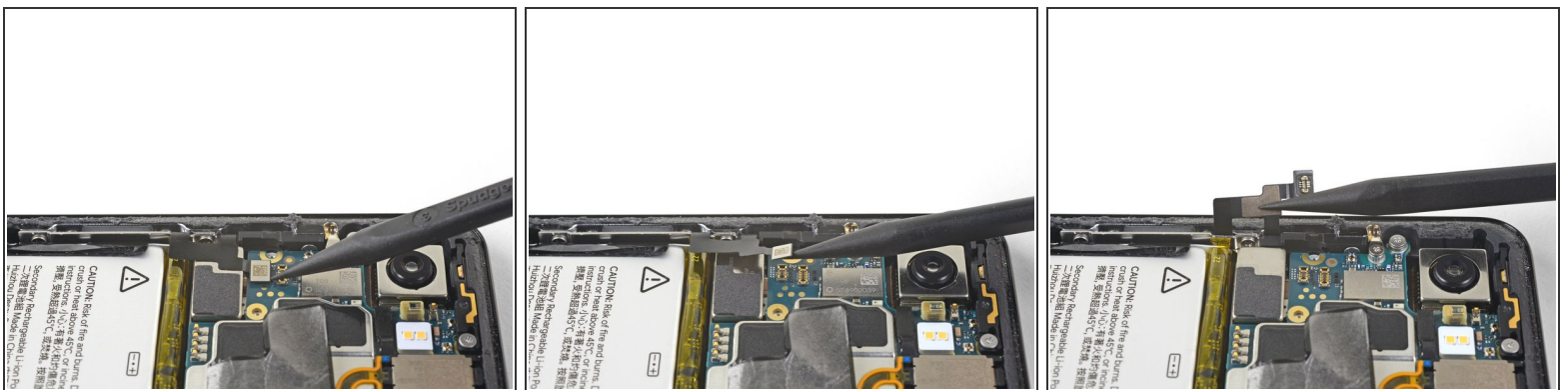
Step 13 — Battery



⚠ Whenever you use the spudger near the battery, be very careful not to puncture the battery.

- Slide the point of a spudger in the crevice underneath the black tape bridging across the battery and the motherboard.
- Slide the spudger along the crevice to pry up the tape from the battery side.
- Carefully peel the tape from the battery and fold it out of the way.

Step 14



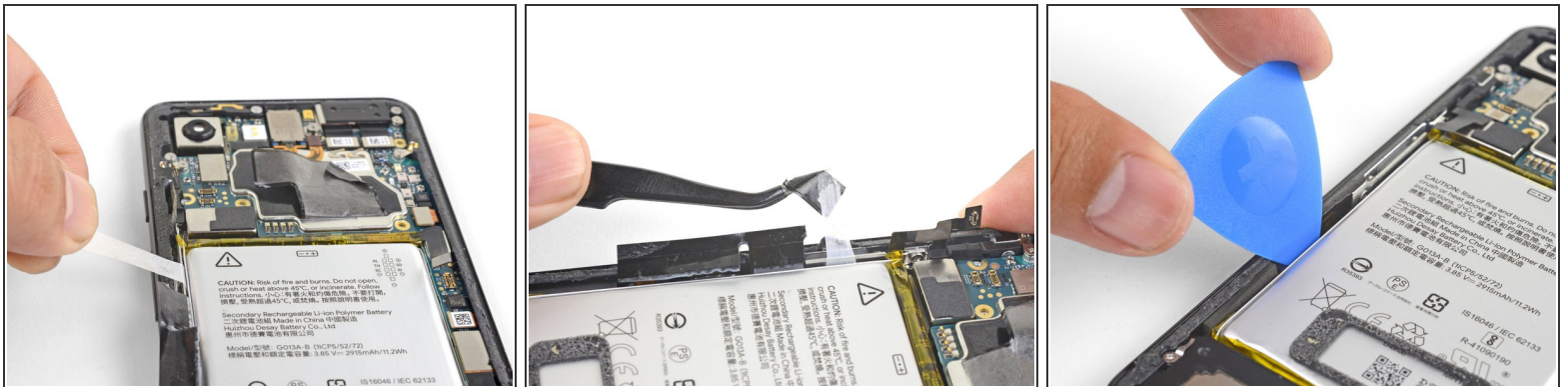
- Use the point of a spudger to pry up and disconnect the buttons connector from its motherboard socket near the left edge of the phone.
- Push the connector and its flex cable out of the way of the battery.

Step 15



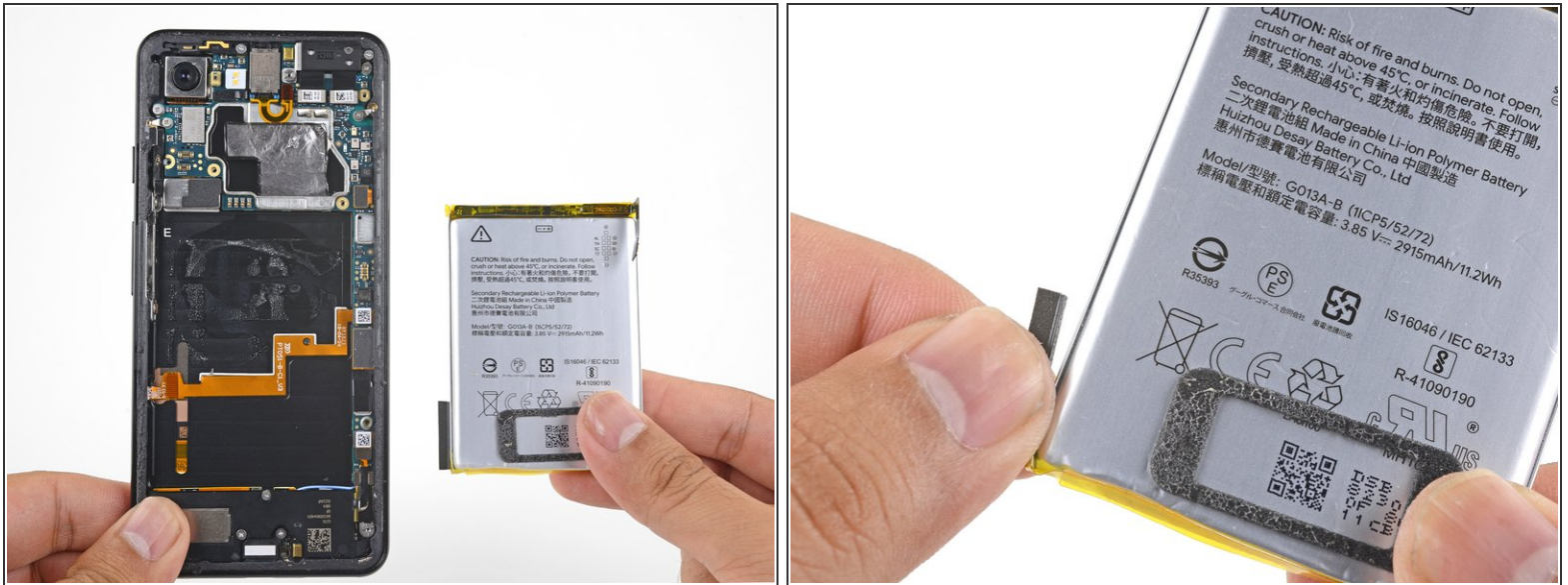
- Insert the point of a spudger underneath the black battery pull tab on the left edge of the phone.
- Slide the spudger upwards along the edge to loosen the pull tab from the battery.
- ❗ The battery is held in place with three separate stretch adhesive strips, which are connected to a single black pull tab. You can try to pull all three strips out together, but it is easier to cut the black pull tab where it is notched and pull each strip out individually.

Step 16



- Pull on the black pull tab at a shallow angle with steady force. When the adhesive grows long, roll it around some tweezer tips and continue pulling.
- If the adhesive strips break, use an opening pick to help pry up and loosen the battery.

Step 17



- Remove the battery.
- Carefully pull and remove the small foam buffer block from the left edge of the battery and transfer it to your replacement part.
- ✦ To install a replacement battery:
 - Lay some double-sided tape in the phone's battery well. Peel away any tape liners to expose the adhesive.
 - *Temporarily* re-connect the battery's connector to the motherboard socket. This ensures that the battery is properly positioned.
 - Lay the battery on the adhesive and press firmly.
 - Disconnect the battery connector from its motherboard socket and resume re-assembly.

For optimal performance, calibrate your newly installed battery: Charge it to 100% and keep charging it for at least 2 more hours. Then use your device until it shuts off due to low battery. Finally, charge it uninterrupted to 100%.

To reassemble your device, follow these instructions in reverse order.

Take your e-waste to an [R2 or e-Stewards certified recycler](#).

Repair didn't go as planned? Check out our [Google Pixel 3 Answers community](#) for troubleshooting help.