



Google Pixel 3 XL Flash Diffuser Replacement

Follow this guide to remove and replace the plastic flash diffuser on your Pixel 3 XL.

Written By: Arthur Shi



INTRODUCTION

This guide shows how to remove and replace the plastic flash diffuser on your Pixel 3 XL.



TOOLS:

- [iOpener](#) (1)
- [Suction Handle](#) (1)
- [iFixit Opening Picks set of 6](#) (1)
- [Spudger](#) (1)
- [Tweezers](#) (1)
- [iFixit Opening Tools](#) (1)



PARTS:

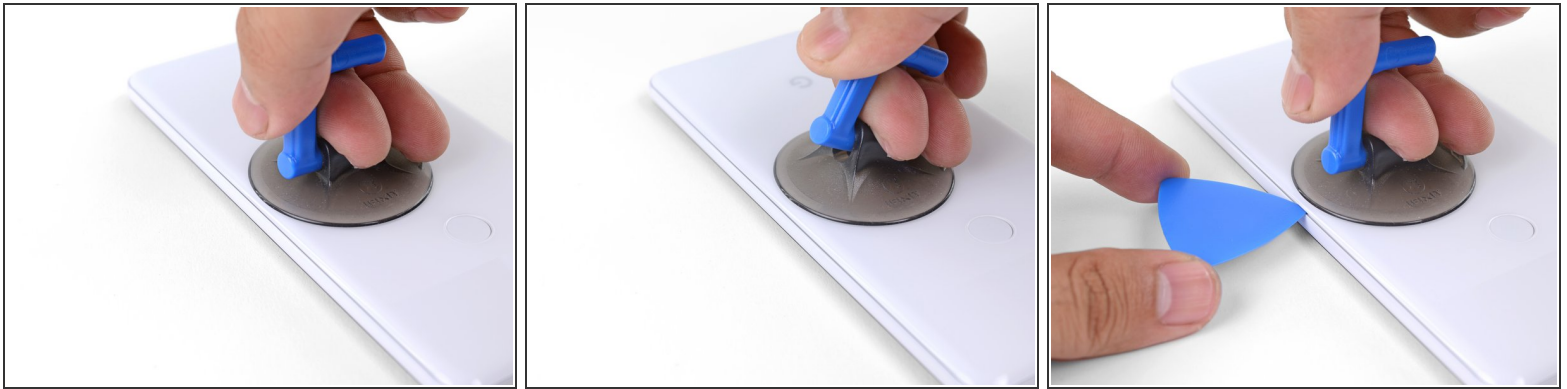
- [Google Pixel 3 XL Back Panel Adhesive](#) (1)
- [Google Pixel 3 3 XL Flash Diffuser](#) (1)

Step 1 — Heat the edge of the back panel



- [Heat an iOpener](#) and apply it to the right edge of the back panel for a minute.
- ⓘ A hair dryer, heat gun, or hot plate may also be used, but be careful not to overheat the phone—the display and internal battery are both susceptible to heat damage.
- While you wait, note the following areas on the back panel:
 - Strong adhesive—there are large patches of adhesive near the bottom of the phone.
 - Fingerprint sensor cable—be careful not to slice through the cable as you pry

Step 2 — Create a gap under the back panel



- Apply a suction cup to the heated edge of the back panel, as close to the edge as possible.
- Pull up on the suction cup with strong, steady force to create a gap.
 - Depending on the age of your phone, this may be difficult. If you are having trouble, apply heat to the edge and try again.
- Insert the point of an opening pick into the gap.

Step 3 — Loosen the right edge adhesives



- Slide the opening pick along the right edge to slice through the adhesive.
- The adhesive gums up and becomes hard to slice once it cools. If that happens, re-apply heat to the edge to make slicing easier.
- Once you have sliced through the edge, leave an opening pick in the seam to prevent the adhesive from re-sealing.

Step 4 — Heat the bottom edge of the back panel



- Apply a heated iOpener to the bottom of the back panel for a minute.

Step 5 — Slice through the bottom adhesives



- Use an opening pick to slice around the bottom right corner and continue along the bottom edge of the phone.
- ⓘ Work slowly as you slice around the corner to prevent the panel from cracking. If the slicing becomes hard, re-apply heat.
- Leave a pick in the edge to prevent the adhesive from re-sealing.

Step 6 — Slice through the remaining edges



- Continue heating and slicing the remaining edges of the phone.
- Be careful as you slice along the left edge of the phone. If your pick feels like it's stuck near the top, you may have snagged the fingerprint sensor. Retract the pick out of the seam slightly and try again.
- Be sure to cut through the thick portions of adhesive near the bottom and right edge of the phone.

Step 7 — Slice through the leftover adhesive



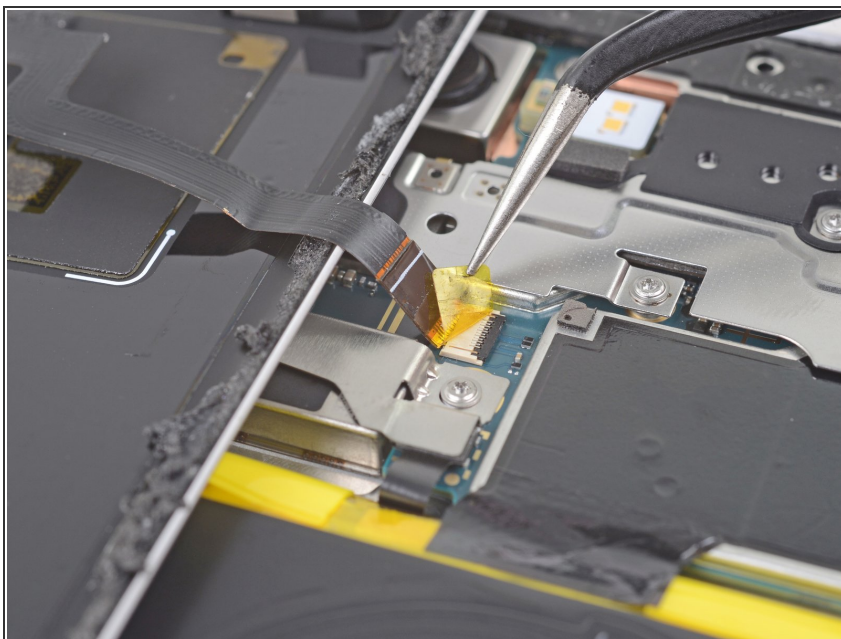
- Gently pry up the right edge of the back panel.
- Use an opening pick to slice through any remaining adhesive along the edges.

Step 8 — Swing open the back panel



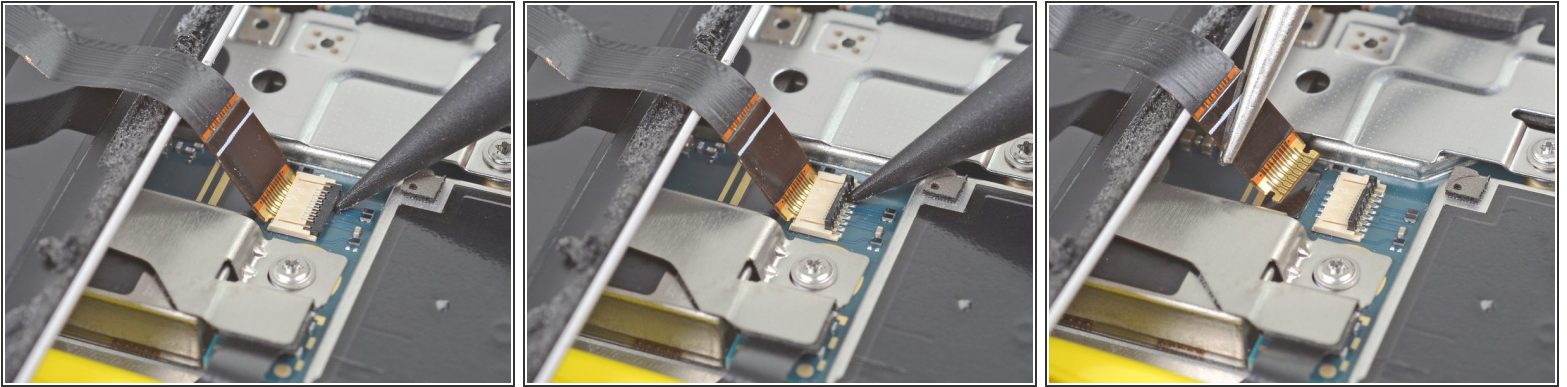
- Swing the right edge of the back panel upwards and rest the flipped panel along the left side of the phone.
- ⓘ Be sure to maintain slack on the fingerprint sensor cable and prevent it from being pinched.
- ✦ During reassembly, this is a good point to power on your phone and test all functions before sealing it up. Be sure to power your phone back down completely before you continue working.
- ✦ During reassembly, [follow this guide](#) to install custom-cut adhesives for your back panel.

Step 9 — Remove the fingerprint sensor tape



- Use tweezers to carefully peel up and remove the yellow tape over the fingerprint sensor connector.

Step 10 — Disconnect the fingerprint sensor



- Use the point of a spudger to carefully flip up the black lock bar on the fingerprint sensor's ZIF socket.
- Grasp the cable's tab with your tweezers and gently walk the flex cable out of the socket.
 - ❗ To prevent shorting, be careful not to touch the metal contacts on the flex cable with your tweezers.

Step 11 — Remove the back panel



- Remove the back panel.

Step 12 — Remove the flash diffuser



- Insert the edge of an opening tool underneath the plastic flash diffuser and slowly pry up to loosen the diffuser.
- Remove the diffuser.

To reassemble your device, follow these instructions in reverse order.

Repair didn't go as planned? Ask our [Answers community](#) for help.