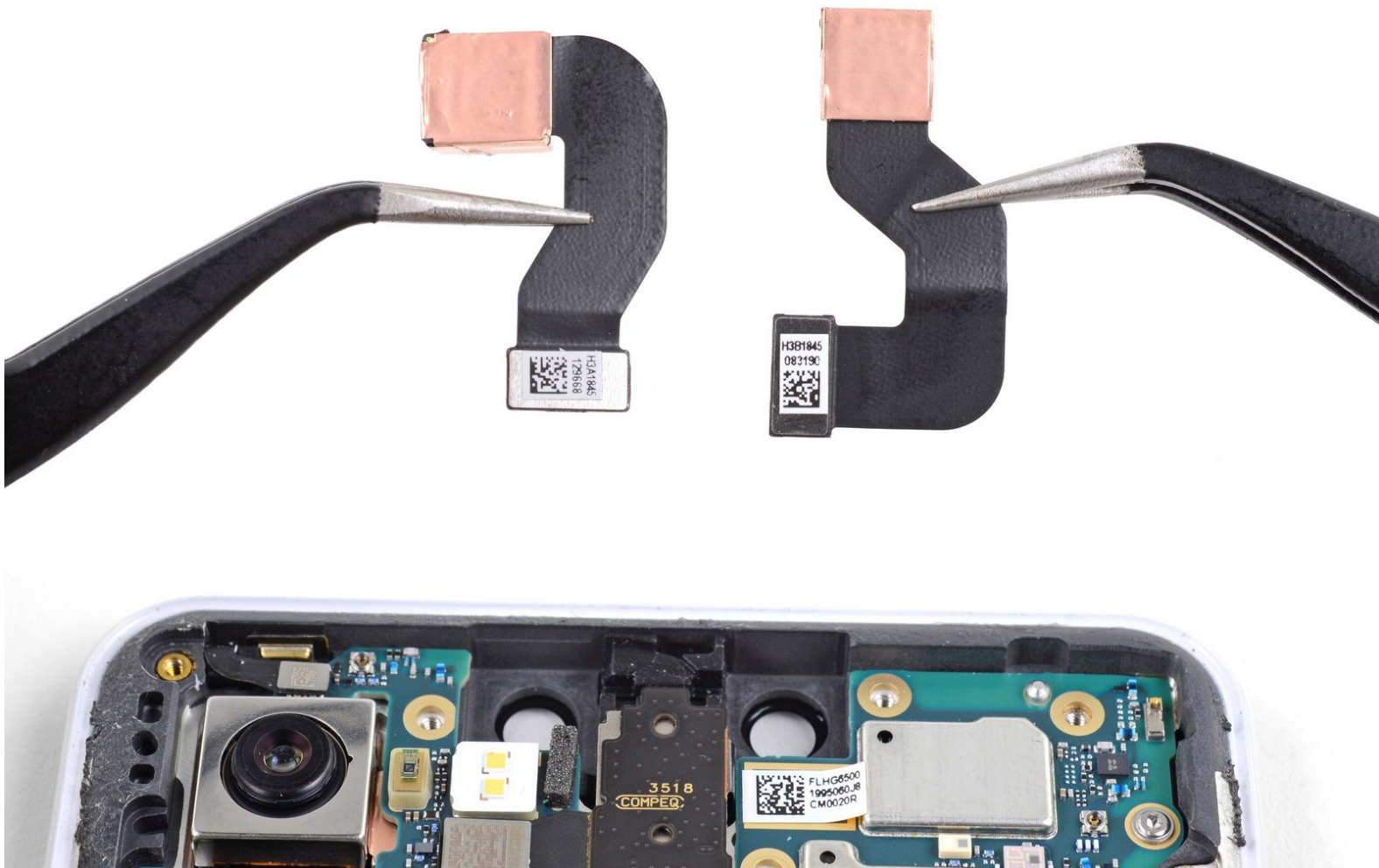




Google Pixel 3 XL Front Camera Removal

Prerequisite guide only! Removes the front-facing cameras.

Written By: Arthur Shi



INTRODUCTION

This is a prerequisite guide! This guide is part of an another procedure and is not meant to be used alone.

This guide shows how to remove and replace either or both front-facing selfie cameras for your Pixel 3 XL. Compared to the published front-facing camera guide, this prereq does not have the determination step.



TOOLS:

- [iOpener](#) (1)
- [Suction Handle](#) (1)
- [iFixit Opening Picks set of 6](#) (1)
- [T3 Torx Screwdriver](#) (1)
- [Tweezers](#) (1)
- [Spudger](#) (1)



PARTS:

- [Google Pixel 3 XL Right Front Camera](#) (1)
- [Google Pixel 3 XL Wide Angle Front Camera](#) (1)

Step 1 — Remove the motherboard shield screws



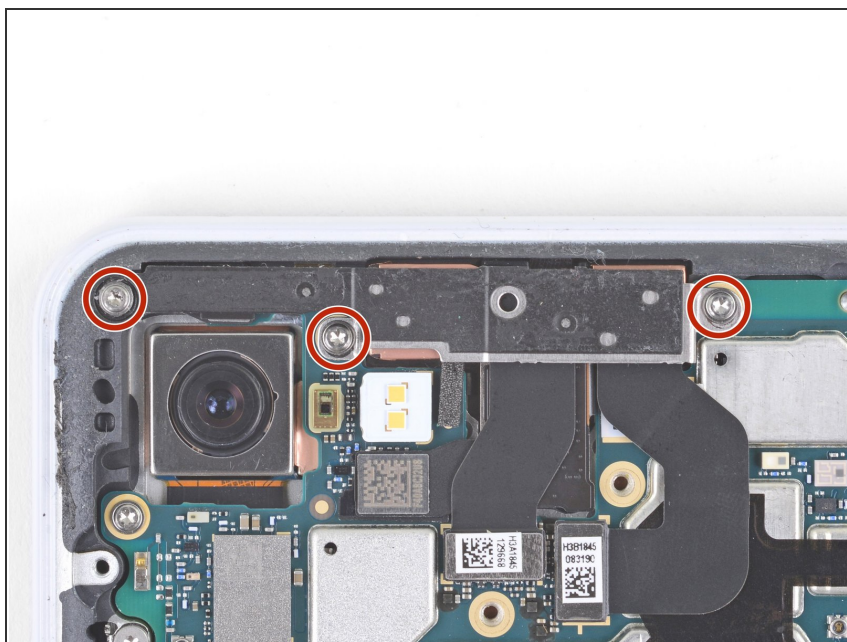
- Remove the five T3 screws securing the motherboard shield:
 - Three 4 mm long screws
 - Two 3 mm long screws

Step 2 — Remove the motherboard shield



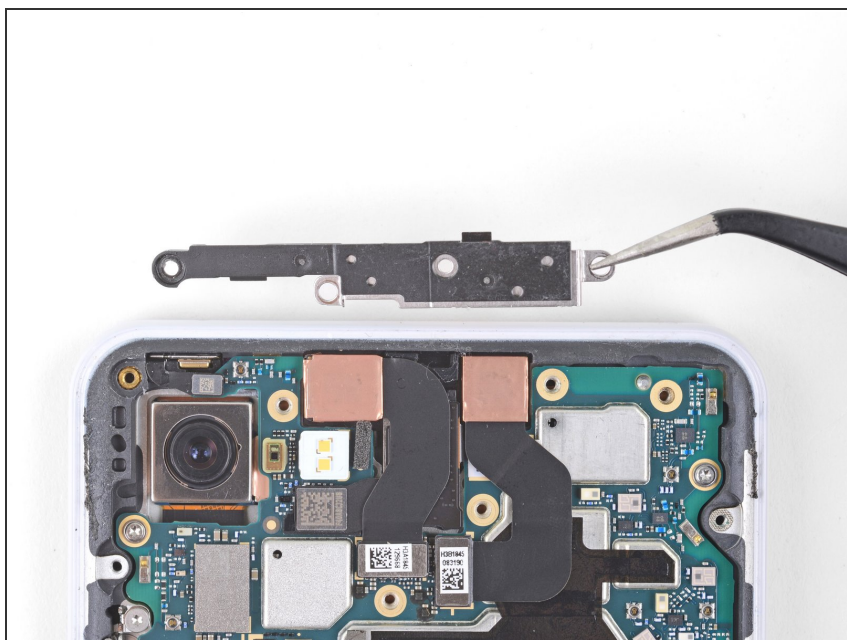
- Remove the motherboard shield.

Step 3 — Remove the front camera bracket



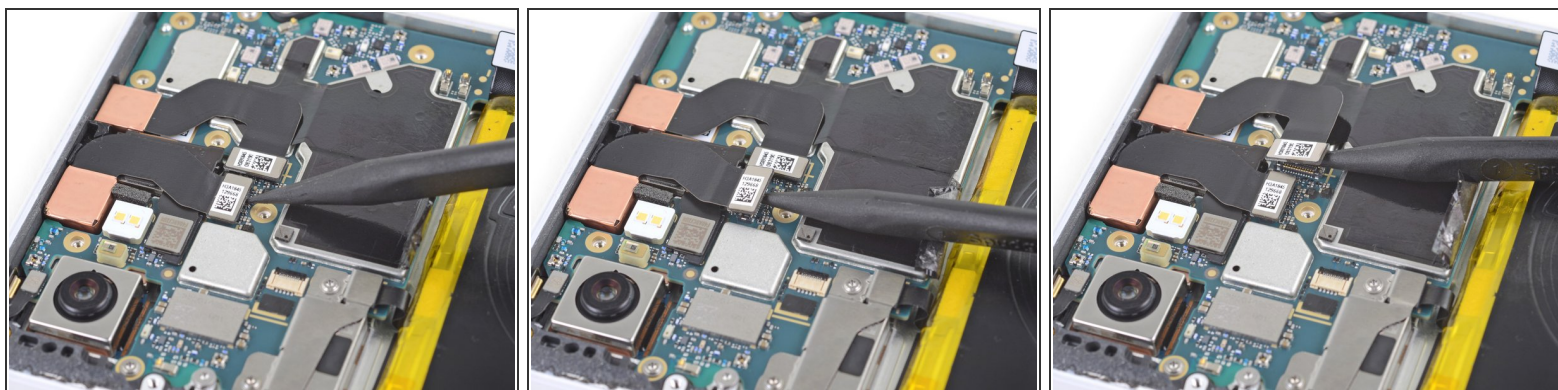
- Remove the three 3 mm long T3 screws securing the front camera bracket.

Step 4 — Remove the front camera bracket



- Remove the front camera bracket.

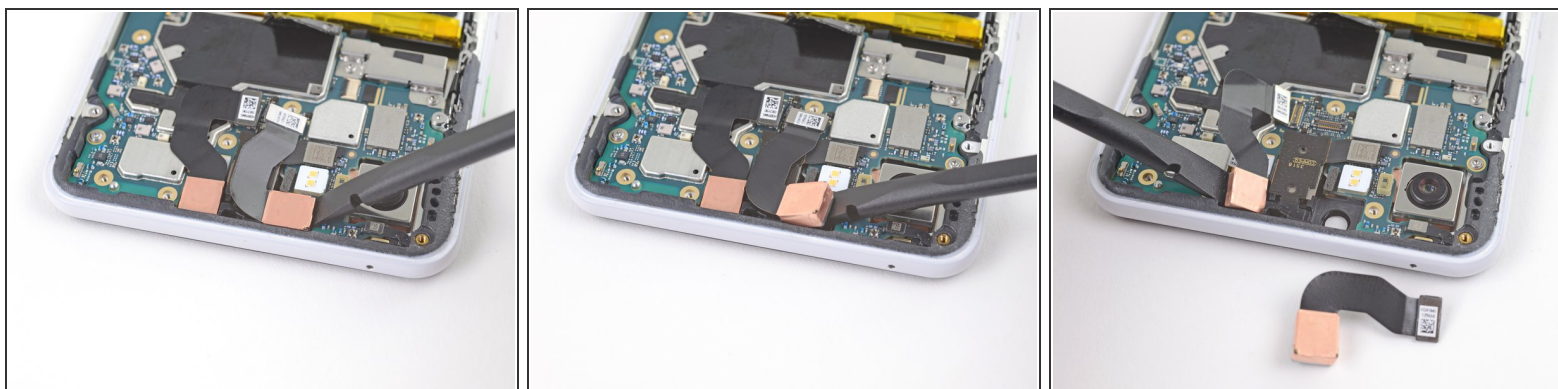
Step 5 — Disconnect the front cameras



- Use the point of a spudger to carefully pry up and disconnect the cameras from their motherboard sockets.

⚠ Be very careful not to dislodge the small surface-mounted components surrounding the sockets.

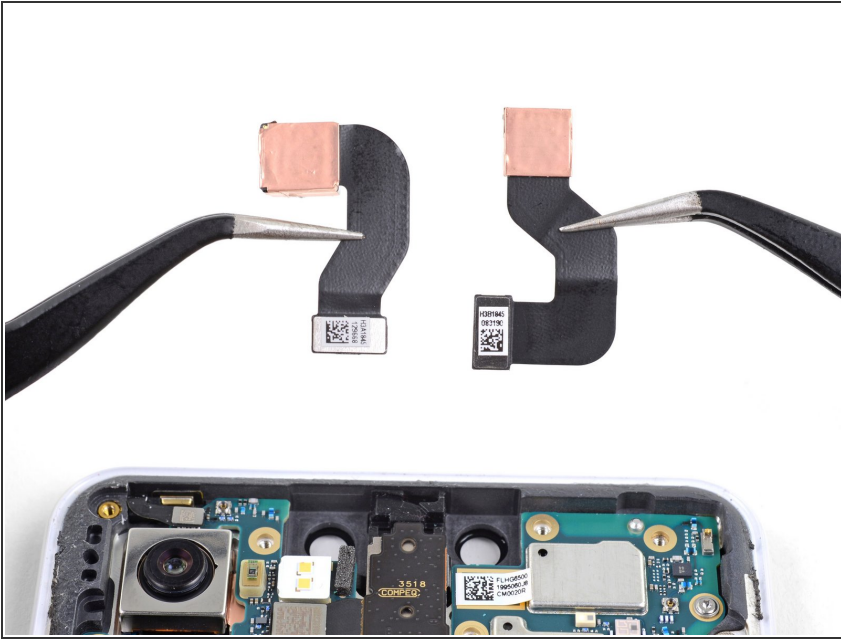
Step 6 — Loosen the front cameras



i The cameras are lightly adhered in place.

- Use the flat end of a spudger to pry up and loosen the camera modules from their recess.

Step 7 — Remove the front-facing cameras



- Remove the front-facing cameras.

To reassemble your device, follow these instructions in reverse order.

Repair didn't go as planned? Try some [basic troubleshooting](#), or ask our [Answers community](#) for help.