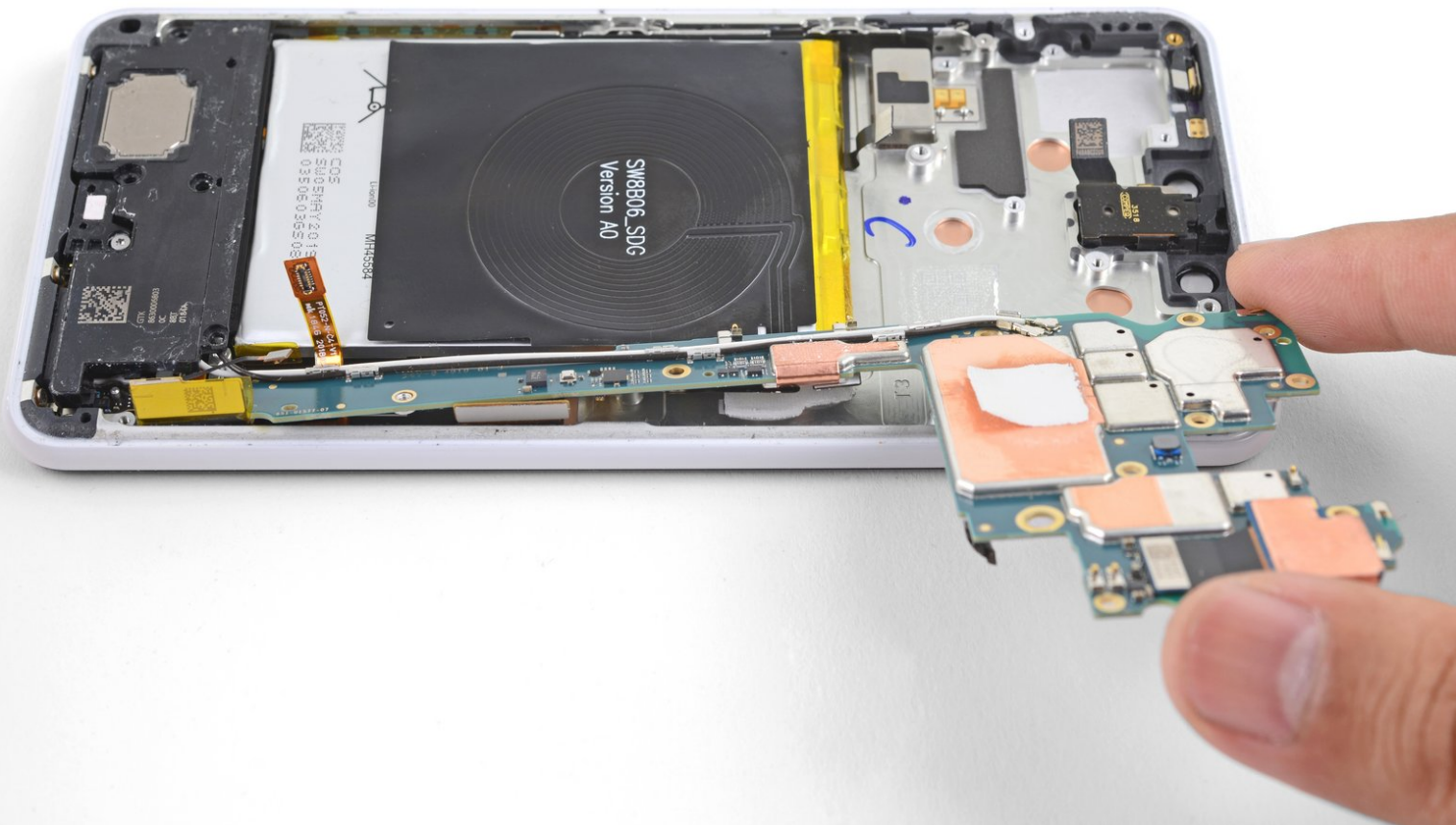




Google Pixel 3 XL Partial Motherboard Separation

Prerequisite guide only! Partially separates the motherboard from the frame in order to access the rear-facing camera.

Written By: Arthur Shi



INTRODUCTION

This is a prerequisite guide! This guide is part of an another procedure and is not meant to be used alone.

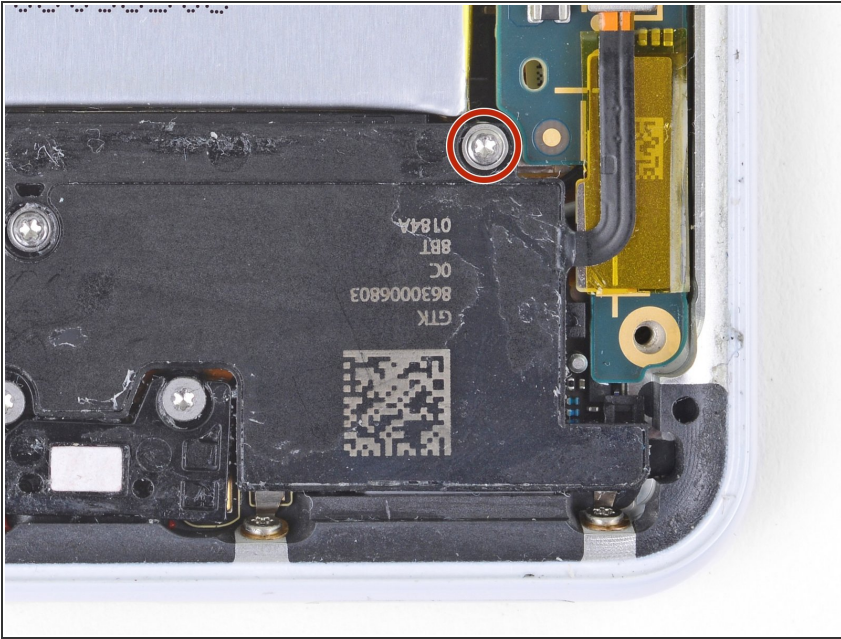
This guide shows how to partially separate the motherboard from the frame in order to access the rear-facing camera.



TOOLS:

- [T3 Torx Screwdriver](#) (1)
 - [Tweezers](#) (1)
 - [Spudger](#) (1)
-

Step 1 — Remove one loudspeaker screw



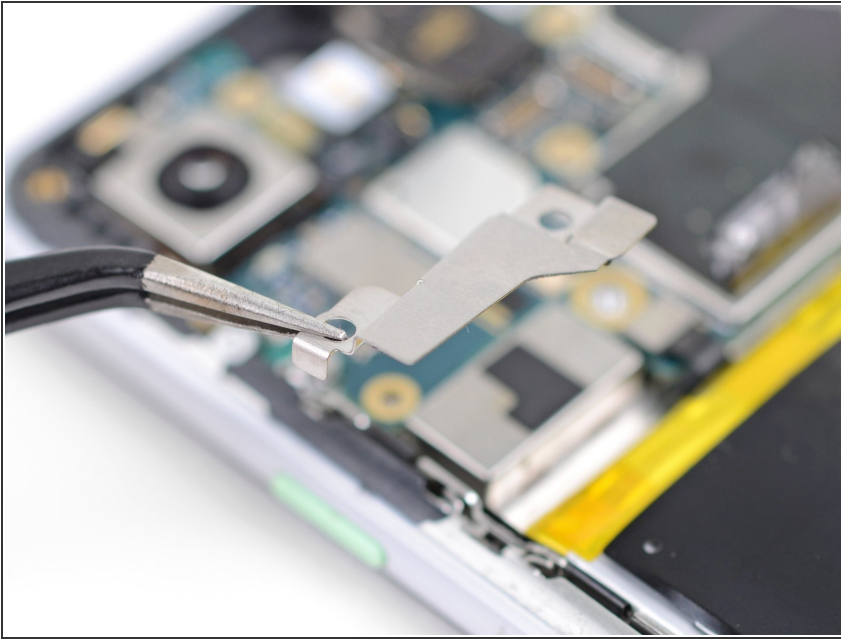
- Remove the 4 mm long T3 screw securing the top-right corner of the loudspeaker.
- ⓘ Removing this screw will give you slightly more wiggle room when removing the motherboard.

Step 2 — Remove the squeeze sensor bracket screws



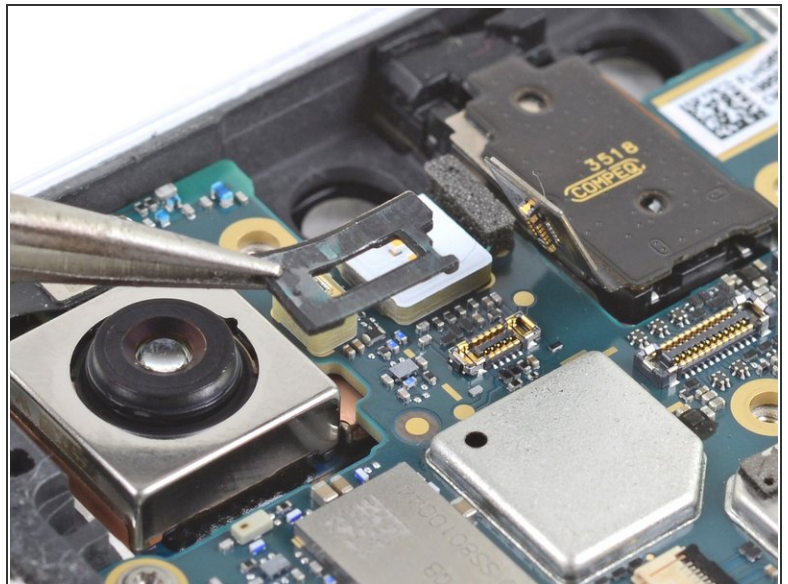
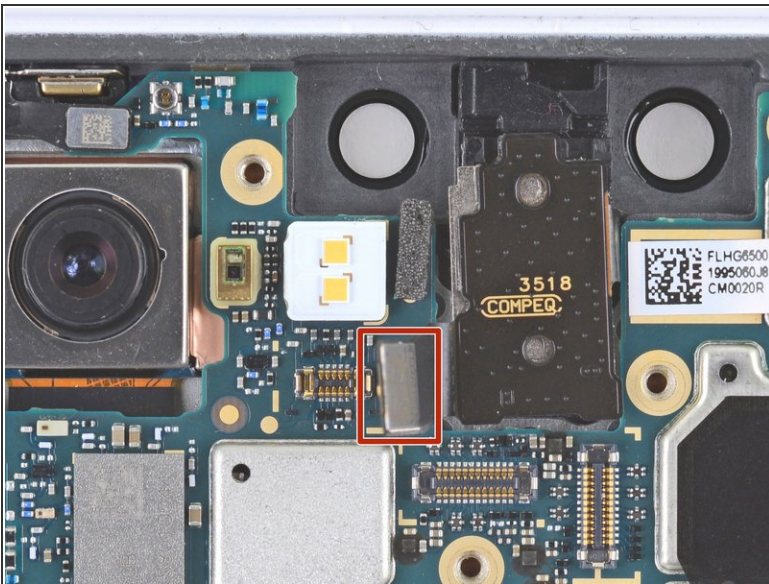
- Remove the two 3 mm long T3 screws securing the left squeeze sensor bracket.

Step 3 — Remove the squeeze sensor bracket



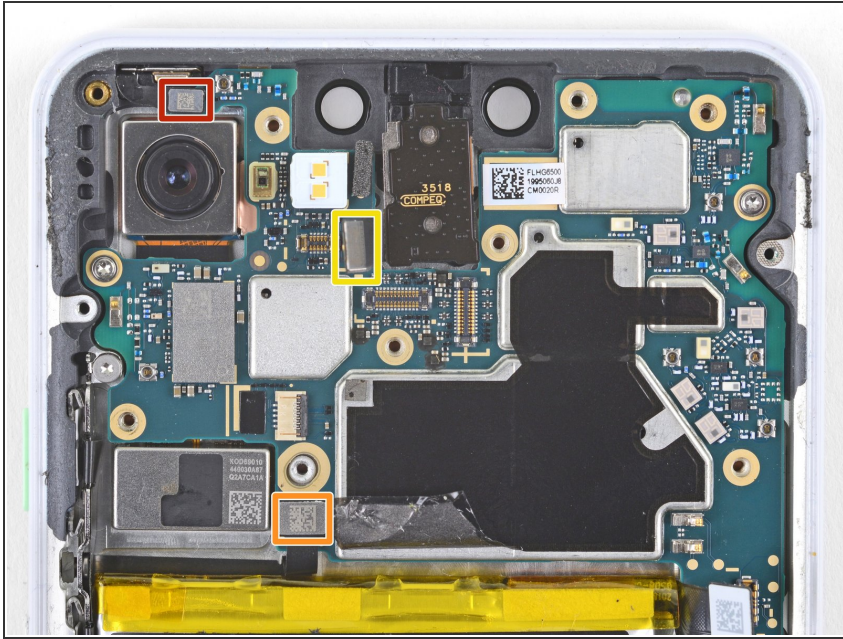
- Remove the squeeze sensor bracket.

Step 4 — Disconnect the earpiece speaker



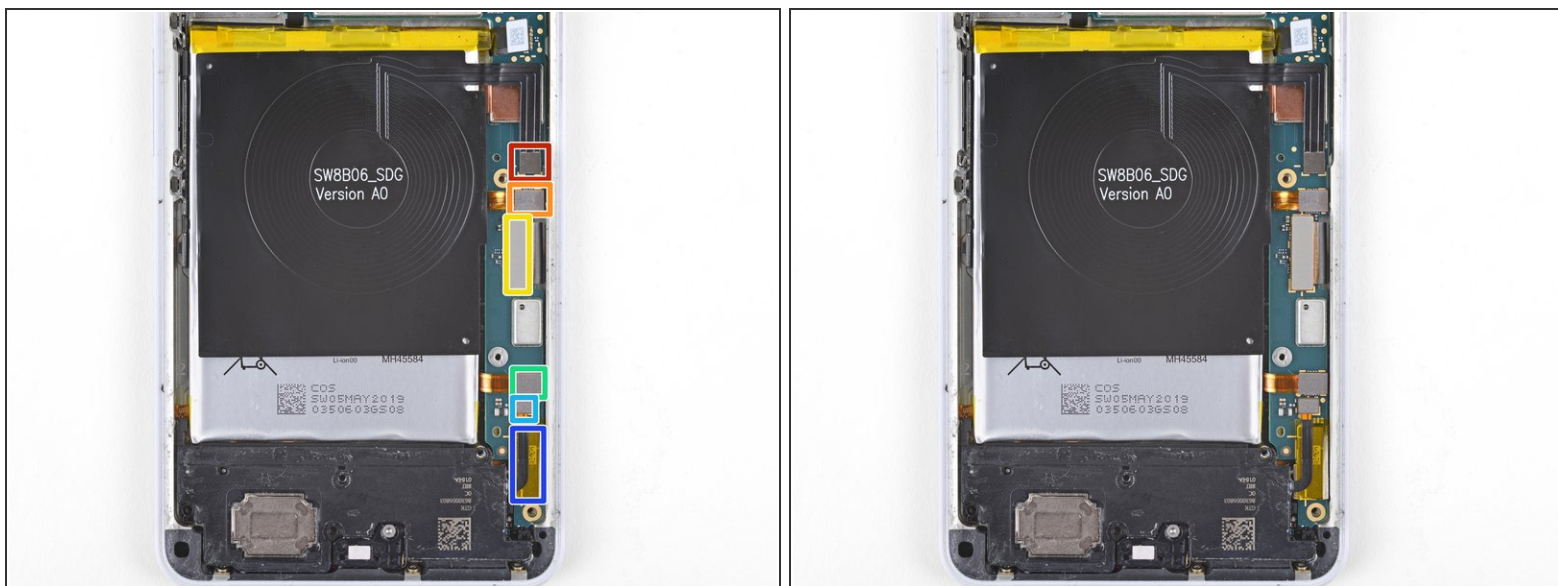
- Use the point of a spudger to pry up and disconnect the earpiece connector from its motherboard socket.
- Carefully remove the connector pad surrounding the earpiece socket.

Step 5 — Disconnect the motherboard connectors



- Use the point of a spudger to pry up and disconnect the following:
 - Microphone connector
 - Button array connector
 - Earpiece connector (should already be disconnected)

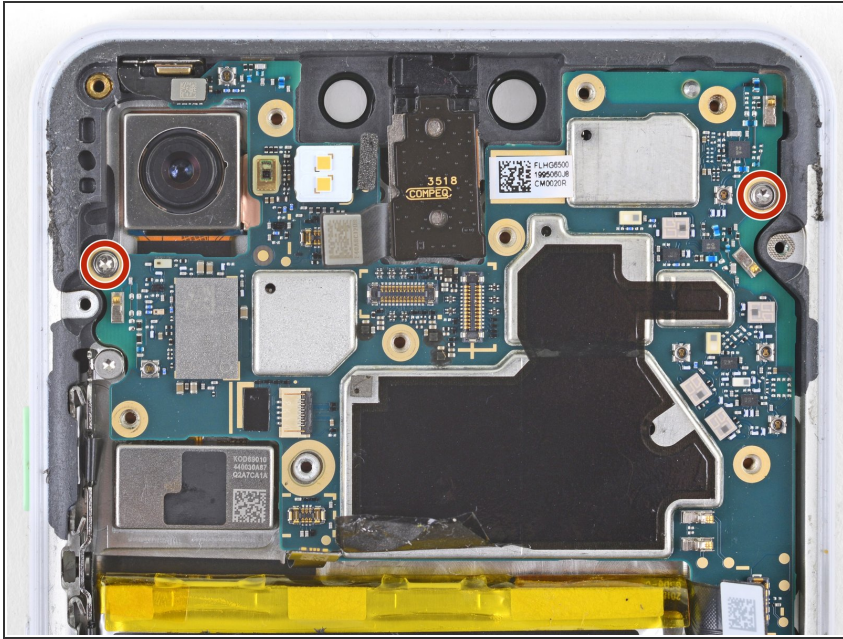
Step 6



- Use the point of a spudger to pry up and disconnect the following:

- Charging coil connector
- Left squeeze sensor connector
- Display connector
- Right squeeze sensor connector
- Loudspeaker connector
- USB-C port connector

Step 7 — Remove the motherboard screws



- Remove the two 3 mm long T3 screws securing the motherboard.

Step 8 — Loosen the motherboard



- Insert the point of a spudger underneath the motherboard, near the rear-facing camera module.
- Pry up gently to loosen the motherboard from its recess.
 - If the motherboard is not budging, make sure you have disconnected all the connectors.
- The motherboard has to [squeeze past the earpiece speaker cable](#). If too much pressure is put on the earpiece cable, the earpiece speaker will pop open. You can prevent this by pressing on the earpiece module with a finger while you maneuver the motherboard out.
- ⓘ If the earpiece speaker pops open (as shown in the third photo of this step), carefully align and press the module back in place.

Step 9



***i* Do not attempt to remove the motherboard from the phone. It is still attached to the phone.**

- While you perform this step, take care to keep slack on the antenna cables attached to the bottom leg of the motherboard.
- Lift the top half of the motherboard slightly to clear the board from its recess.
- Twist the left edge of the board over and out of the phone and rest the board on the right edge of the phone.

To reassemble your device, follow these instructions in reverse order.